

Figure 25

*M. cerebralis* infected fingerling rainbow trout with various stages of trophozoites and histo-pathological changes in the cartilaginous tissue section of the gill arch (between the arrows).

FeH stain. X375.

(Courtesy of H. Wolf)

Figure 26

*M. cerebralis* trophozoites in fingerling rainbow trout. Higher magnification of Fig. 25. Normal area (white arrow). Infected area (black arrow).

FeH stain. X1100.

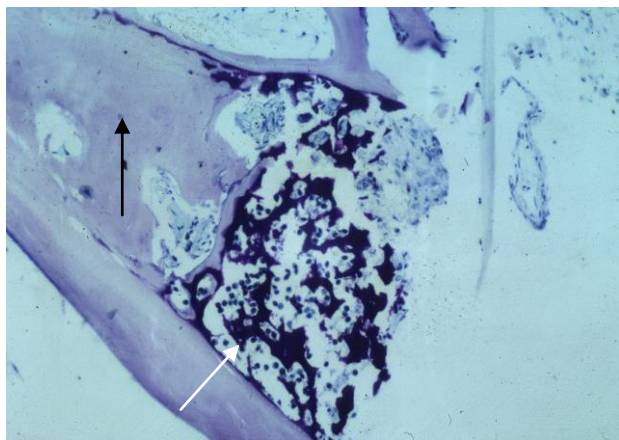
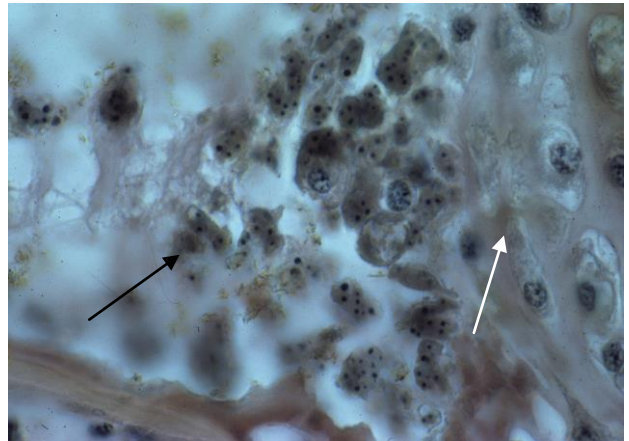


Figure 27

*M. cerebralis* trophozoites and spores in the gill arch of fingerling rainbow trout. Note the basophilic cartilaginous fragments (white arrow). Also note normal cartilaginous tissue (black arrow).

M-G G stain. X150.