

Figure 58

*N. salmonis*. Section of a fingerling steelhead posterior intestine showing extensive lymphocytic infiltration of *N. salmonis* (arrow) in the lamina propria.

H&E stain. X160.

(Courtesy of B. MacConnell)

Figure 59

*N. salmonis*. Parasitized lymphoid cells in lamina propria (arrow) of a fingerling steelhead.

H&E stain. X1000.

(Courtesy of B. MacConnell)

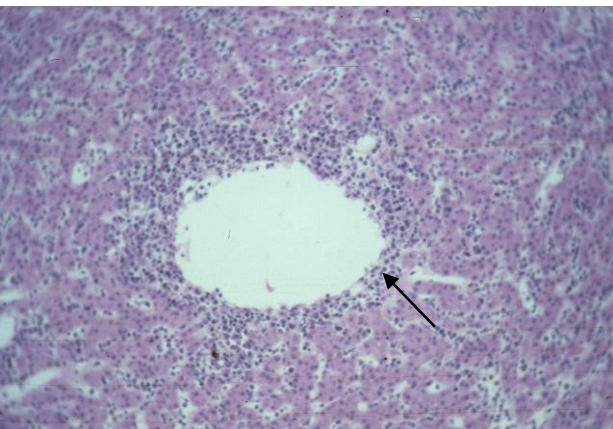
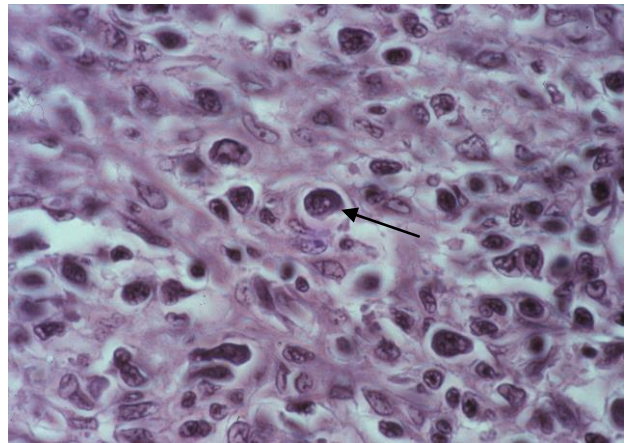


Figure 60

*N. salmonis* infected fingerling steelhead with perivascular cuffing of affected hepatic cells (arrow).

H&E stain. X160.

(Courtesy of B. MacConnell)