

Mineral Industry Surveys

For information, contact:

Amy C. Tolcin, Zinc Commodity Specialist
 National Minerals Information Center
 U.S. Geological Survey
 989 National Center
 Reston, VA 20192
 Telephone: (703) 648-4940 Fax: (703) 648-7757
 Email: atolcin@usgs.gov

Hodan A. Fatah (Data)
 Telephone: (703) 648-4971
 Fax: (703) 648-7975
 Email: hfatah@usgs.gov

Internet: <https://www.usgs.gov/centers/nmic>

ZINC IN APRIL 2021

Domestic mine production (recoverable) of zinc in April 2021 was 56,100 metric tons (t) (tables 1, 2). Mine production (recoverable) for the year through April was 219,000 t of zinc in concentrate, slightly more than that for the same period in 2020. Average daily mine production in April was 1,870 t, 5% less than that in the previous month (revised) but 47% more than that in April 2020 (fig. 1).

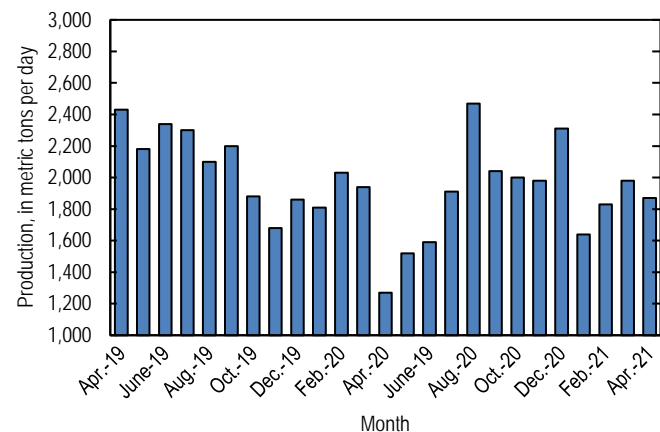


Figure 1. Average daily domestic zinc mine production (recoverable) from April 2019 through April 2021.

Stocks and Prices

Global London Metal Exchange Ltd. (LME) stocks of Special High Grade (SHG) zinc were 291,750 t at the end of April 2021, 8% more than stocks at the end of the previous month and more than five times higher than stocks at the end of April 2020 (fig. 2, table 8). Reported off-warrant stocks of SHG zinc in LME-approved warehouses at the end of April 2021 decreased to 73,737 t from 93,059 t at the end of March 2021 (London Metal Exchange Ltd., 2021a, b).

The monthly average S&P Global Platts Metals Week North American SHG zinc price in April 2021 was \$1.36 per pound,

slightly more than that in the previous month and 44% more than that in April 2020. The April 2021 average LME cash price for SHG zinc was \$2,827.35 per metric ton (\$1.28 per pound), slightly more than that in the previous month and 49% more than that in April 2020 (fig. 3, table 7).

The North American premium to the LME cash price in April 2021 averaged 7.5 cents per pound, unchanged from that in the previous month and 12% less than that in April 2020 (fig. 3, table 7).

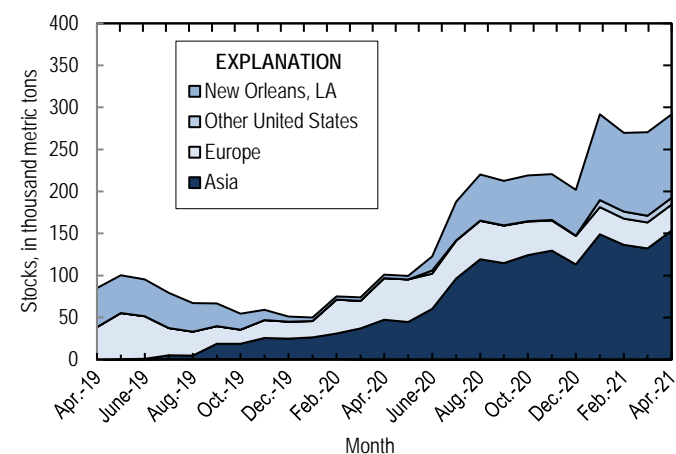


Figure 2. Global LME stocks of Special High Grade zinc, monthend, from April 2019 through April 2021. Source: London Metal Exchange Ltd.

References Cited

- London Metal Exchange Ltd., 2021a, Off warrant stock reporting April 2021: London, United Kingdom, London Metal Exchange Ltd. (Accessed June 17, 2021, via <https://www.lme.com/en-GB/Market-Data/Reports-and-data/Warehouse-and-stocks-reports/Off-warrant-stock-reporting>.)
- London Metal Exchange Ltd., 2021b, Off warrant stock reporting March 2021: London, United Kingdom, London Metal Exchange Ltd. (Accessed May 28, 2021, via <https://www.lme.com/en-GB/Market-Data/Reports-and-data/Warehouse-and-stocks-reports/Off-warrant-stock-reporting>.)

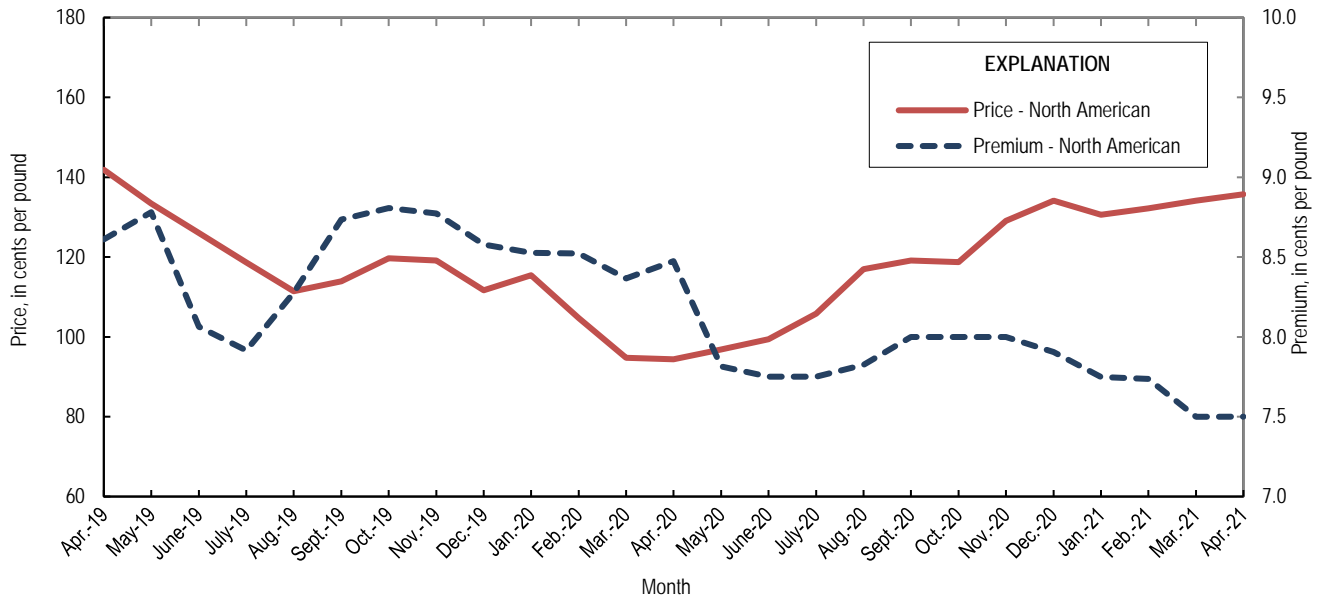


Figure 3. Average monthly North American price and premium for Special High Grade zinc from April 2019 through April 2021. Source: S&P Global Platts Metals Week.

List services and web feed subscribers are the first to receive notification of USGS minerals information publications and data releases. For information on how to subscribe, go to <https://www.usgs.gov/centers/nmic/minerals-information-publication-list-services>.

TABLE 1
SALIENT ZINC STATISTICS¹

(Metric tons, unless otherwise specified)

	2020	2021		
	January– December ^p	March	April	January– April ²
Production:				
Mine, zinc content of concentrate ³	718,000	62,600 ^r	57,300	224,000
Mine, recoverable zinc ³	697,000	61,300 ^r	56,100	219,000
Smelter, refined zinc ^e	180,000	18,000	18,000	72,000
Consumption of refined zinc, apparent ⁴	878,000	73,400	72,700	295,000
Imports for consumption:				
Ore and concentrate (zinc content)	3,170	68	70	6,230
Refined zinc	700,000	57,200	54,900	225,000
Exports:				
Ore and concentrate (zinc content)	546,000 ^r	10,600	4,190	46,000
Refined zinc	2,480	1,810	205	2,520
Price:⁵				
London Metal Exchange cash, average, dollars per metric ton	2,264.42	2,791.65	2,827.35	2,767.48
North American, ⁶ average, cents per pound	110.79	134.13	135.75	133.15

^eEstimated. ^pPreliminary. ^rRevised.

¹Data are rounded to no more than three significant digits, except prices; may not add to totals shown.

²May include revisions to previously published data.

³Reported zinc content in zinc, lead, and bulk concentrates.

⁴Smelter production plus imports for consumption minus domestic exports.

⁵Special High Grade Zinc.

⁶S&P Global Platts Metals Week.

TABLE 2
MINE AND SMELTER PRODUCTION OF ZINC
IN THE UNITED STATES¹

(Metric tons)

Period	Mine ²		Smelter ^c
	Zinc content	Recoverable	
2020:			
April	39,300	38,200	14,000
May	48,500	47,000	15,000
June	49,100	47,600	15,000
July	61,100	59,400	16,000
August	78,800	76,400	16,000
September	62,900	61,100	16,000
October	63,900	62,000	18,000
November	61,100	59,300	18,000
December	73,600	71,500	18,000
January–December	718,000	697,000	180,000
2021:			
January	52,000 ^r	50,800 ^r	18,000
February	52,300	51,200	18,000
March	62,600 ^r	61,300 ^r	18,000
April	57,300	56,100	18,000
January–April	224,000	219,000	72,000

^cEstimated. ^rRevised.

¹Data are rounded to no more than three significant digits; may not add to totals shown.

²Includes the zinc content in both lead and zinc concentrates.

TABLE 3
U.S. IMPORTS FOR CONSUMPTION OF ZINC¹

(Gross weight, unless otherwise specified)

Material	2020		2021			
	Quantity (metric tons)	Value (thousands)	April		January–April ²	
			Quantity (metric tons)	Value (thousands)	Quantity (metric tons)	Value (thousands)
Ore and concentrate (zinc content)	3,170	\$4,410	70	\$77	6,230	\$5,600
Unwrought:						
Refined zinc	700,000	1,600,000	54,900	156,000	225,000	627,000
Zinc alloys	1,370	3,680	370	1,070	1,990	5,560
Wrought:						
Bars, rods, profiles, wire	3,260	10,200	378	1,370	1,290	4,610
Plates, sheets, strip, foil	2,570	11,500	131	562	470	2,260
Ash and residues:						
Zinc dross and skimmings	3,800	5,680	462	793	1,480	2,690
Other (zinc content)	1,130	717	38	65	788	613
Other:						
Powders, flakes, dust	24,600	83,700	2,560	9,610	9,200	34,800
Waste and scrap	11,400	15,800	1,230	1,920	4,010	6,900
Chemicals:						
Lithopone	1,150	4,200	116	482	738	1,960
Zinc oxide	102,000	252,000	10,000	26,300	37,600	97,900
Zinc chloride	275	1,640	27	136	47	342
Zinc sulfate	92,600	70,900	7,630	7,670	32,800	29,700
Zinc sulfide	964	4,720	91	482	391	2,050

¹Data are rounded to no more than three significant digits.

²May include revisions to previously published data.

Source: U.S. Census Bureau.

TABLE 4
U.S. IMPORTS OF ZINC, BY TYPE OF MATERIAL AND COUNTRY OR LOCALITY¹

(Metric tons, gross weight, unless otherwise specified)

Material and country or locality	General imports			Imports for consumption		
	2020	2021		2020	2021	
		April	January–April ²		April	January–April ²
Ore and concentrate (zinc content):						
Canada	--	23	105	--	23	105
China	1,060	--	59	1,060	--	59
Germany	--	47	47	--	47	47
Mexico	(3)	1	395	(3)	1	395
Peru	2,100	--	5,620	2,100	--	5,620
Total	3,170	70	6,230	3,170	70	6,230
Refined zinc:						
Australia	33,000	298	298	2,000	298	1,800
Belgium	24,100	--	--	1	--	--
Brazil	21,900	--	--	13,400	--	--
Canada	489,000	40,900	164,000	489,000	40,900	164,000
China	108	--	(3)	108	--	(3)
Germany	--	--	854	--	--	854
Korea, Republic of	39,100	--	9,110	21,100	--	9,140
Mexico	130,000	11,100	36,500	130,000	11,100	36,500
Netherlands	1,470	--	--	--	--	--
Peru	44,400	2,620	10,100	44,400	2,620	10,100
Poland	100	--	--	100	--	--
Spain	20,000	--	--	123	--	2,670
Taiwan	24	--	--	24	--	--
Other	(3)	--	(3)	(3)	--	(3)
Total	803,000	54,900	221,000	700,000	54,900	225,000
Oxide:						
Australia	538	1	61	538	1	61
Canada	42,600	4,190	15,800	42,600	4,190	15,800
China	175	9	63	175	9	63
Germany	1,160	158	597	1,160	158	597
Greece	798	40	120	798	40	120
Japan	868	34	169	868	34	169
Mexico	43,100	4,130	15,900	43,100	4,130	15,900
Netherlands	9,030	1,270	3,330	9,030	1,270	3,330
Peru	3,850	66	1,330	3,850	66	1,330
Other	258	99	234	258	99	234
Total	102,000	10,000	37,600	102,000	10,000	37,600

-- Zero.

¹Data are rounded to no more than three significant digits; may not add to totals shown.

²May include revisions to previously published data.

³Less than ½ unit.

Source: U.S. Census Bureau.

TABLE 5
U.S. EXPORTS OF ZINC¹

(Gross weight, unless otherwise specified)

Material	2020		2021			
	Quantity (metric tons)	Value (thousands)	April		January–April ²	
			Quantity (metric tons)	Value (thousands)	Quantity (metric tons)	Value (thousands)
Ore and concentrate (zinc content)	546,000 ^r	\$804,000 ^r	4,190	\$5,670	46,000	\$79,400
Unwrought:						
Refined zinc	2,480	6,810	205	663	2,520	7,800
Zinc alloys	19,900	54,000	2,090	6,700	8,190	25,400
Wrought:						
Bars, rods, profiles, wire	9,500	28,900	892	2,780	3,610	11,500
Plates, sheets, strip, foil	5,460	20,300	626	2,750	2,630	10,600
Ash and residues:						
Hard zinc spelter	9,150	12,300	1,160	2,140	4,740	8,430
Other (zinc content)	23,000	30,700	2,600	4,220	9,290	14,900
Other:						
Powders, flakes, dust	13,500 ^r	49,100 ^r	699	2,390	3,110	10,800
Waste and scrap	25,000	29,600	3,250	3,110	11,900	14,400
Chemicals:						
Lithopone	522	1,900	25	143	146	751
Zinc oxide	44,900	56,000	6,540	9,510	26,000	36,600
Zinc chloride	419	747	60	77	168	276
Zinc sulfate	507	507	108	100	215	194
Zinc sulfide	1,420	13,000	209	1,550	857	6,400

^rRevised.

¹Data are rounded to no more than three significant digits.

²May include revisions to previously published data.

Source: U.S. Census Bureau.

TABLE 6
U.S. EXPORTS OF ZINC, BY TYPE OF MATERIAL AND COUNTRY OR LOCALITY¹

(Metric tons, gross weight, unless otherwise specified)

Material and country or locality	2020	2021	
		April	January-April ²
Ore and concentrate (zinc content):			
Australia	63,300	--	--
Belgium	40,000	--	--
Canada	287,000	4,190	18,200
Finland	15,700	--	--
Germany	21,100	--	--
Italy	5,290	--	--
Japan	38,400 ^r	--	2,500
Korea, Republic of	56,500 ^r	--	13,000
Peru	120	--	--
Spain	18,400	--	12,300
Other	31	--	11
Total	546,000 ^r	4,190	46,000
Refined zinc:			
Canada	962	102	487
India	297	--	--
Mexico	833	97	2,030
Vietnam	164	--	--
Other	223	6	8
Total	2,480	205	2,520
Oxide:			
Australia	503	--	--
Brazil	284 ^r	4	80
Canada	3,290	253	1,240
France	253	21	94
India	385	34	250
Mexico	38,500	5,760	23,400
Other	1,660	465	966
Total	44,900	6,540	26,000

^rRevised. -- Zero.

¹Data are rounded to no more than three significant digits; may not add to totals shown.

²May include revisions to previously published data.

Source: U.S. Census Bureau.

TABLE 7
AVERAGE PRICES FOR SPECIAL HIGH GRADE ZINC

Period	North American		London Metal Exchange	
	Premium ¢/lb.	Price ¹ ¢/lb.	cash ²	
			¢/lb.	\$/t
2020:				
April	8.5	94.39	85.91	1,894.08
May	7.8	96.87	89.06	1,963.40
June	7.8	99.40	91.65	2,020.61
July	7.8	105.83	98.08	2,162.24
August	7.8	117.00	109.17	2,406.83
September	8.0	119.15	111.15	2,450.50
October	8.0	118.75	110.75	2,441.55
November	8.0	129.10	121.10	2,669.69
December	7.9	134.11	126.21	2,782.36
January–December	8.1	110.79	102.71	2,264.42
2021:				
January	7.7	130.57	122.82	2,707.70
February	7.7	132.17	124.43	2,743.20
March	7.5	134.13	126.63	2,791.65
April	7.5	135.75	128.25	2,827.35
January–April	7.6	133.15	125.53	2,767.48

¹S&P Global Platts Metals Week North American price. Based on the London Metal Exchange cash price plus the North American premium.

²Average of the cash buyer price and the cash seller and settlement price.

Source: S&P Global Platts Metals Week.

TABLE 8
LONDON METAL EXCHANGE (LME) STOCKS OF SPECIAL HIGH GRADE ZINC, END OF PERIOD

(Metric tons)

Period	United States			Asia	Europe	Other	Total LME
	Baltimore, MD	New Orleans, LA	Total				
2020:							
April	--	4,200	4,200	36,650	49,225	100	53,425
May	--	4,175	4,175	44,700	50,675	25	99,575
June	3,825	16,675	20,500	60,425	41,625	--	122,550
July	475	46,075	46,550	96,525	44,900	--	187,975
August	475	54,650	55,125	119,300	45,700	--	220,125
September	475	52,950	53,425	114,575	44,575	--	212,575
October	475	54,500	54,975	124,200	40,025	--	219,200
November	475	54,500	54,975	129,700	35,825	--	220,500
December	475	54,500	54,975	113,025	34,075	--	202,075
2021:							
January	8,150	102,150	110,300	149,000	32,450	--	291,750
February	8,150	93,850	102,000	136,325	31,400	--	269,725
March	8,150	99,300	107,450	132,150	30,900	--	270,500
April	8,150	99,300	107,450	153,650	30,650	--	291,750

-- Zero.

Source: London Metal Exchange, Ltd.