

# Mineral Industry Surveys

## For information, contact:

Charles Anderson, Silver Commodity Specialist  
 National Minerals Information Center  
 U.S. Geological Survey  
 989 National Center  
 Reston, VA 20192  
 Telephone: (703) 648-4985, Fax: (703) 648-7757  
 Email: csanderson@usgs.gov

Michelle Blackwell (Data)  
 Telephone: (703) 648-7943  
 Fax: (703) 648-7792  
 Email: mblackwell@usgs.gov

Internet: <http://www.usgs.gov/centers/nmic>

## SILVER IN APRIL 2021

U.S. mines produced 84,000 kilograms (kg) of silver in April 2021 (table 1). Based on unrounded data, the average daily silver production in April was 2,800 kg, essentially unchanged from the revised daily silver production of 2,820 kg in March 2021, and a 19% increase from the daily silver production of 2,350 kg in April 2020 (fig. 1, table 1).

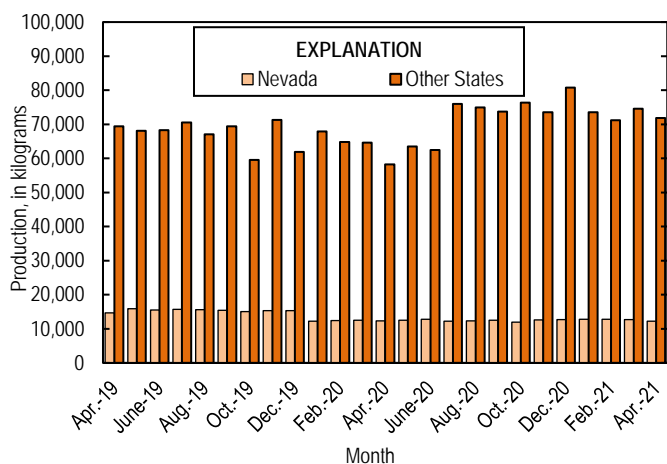


Figure 1. Monthly domestic production of silver in the United States from April 2019 through April 2021.

## Prices

In April 2021, the Engelhard average daily silver price was \$25.71 per troy ounce, unchanged from the March 2021 average daily price of \$25.68 per troy ounce, 70% greater than that in April 2020, and 71% greater than that in April 2019. The daily price in April ranged between a low of \$24.70 per troy ounce and a high of \$26.45 per troy ounce (fig. 2, table 2).

## Trade

In April 2021, imports of silver in the form of bullion, doré, and ores and concentrates totaled 477,000 kg, 24% less than that

in March 2021, and slightly less than that in April 2020 (table 3).

Imports of bullion totaled 399,000 kg, 23% less than that in March 2021, and unchanged from that in April 2020. The decrease with respect to the previous month was owing to decreased imports from (in descending order): the Republic of Korea (54,800 kg), Switzerland (43,400 kg), Kazakhstan (30,200 kg), Germany (23,000 kg), Mexico (19,600 kg), and Poland (11,400 kg). This decrease was partially offset by increased imports from Australia (38,600 kg), Hong Kong (26,200 kg), and Turkey (14,700 kg) (table 3).

## Update

United Steelworkers Local 6500 began a strike at operations at Vale S.A.'s Garson Mine in Sudbury, Ontario, Canada. The strike began on June 1, after union members turned down a tentative agreement for a 5 year contract. Negotiation between the company and the union continued as of mid-June. According to Vale, silver, as well as copper, cobalt, gold, nickel, and platinum group metals were produced at the Sudbury operations in 2020. Total Vale operations produced 69,392 kg (2,231,000 troy ounces) of silver in 2020 (Vale S.A. 2021, p. 64, 110; Warwick, 2021a, b).

The Karachipampa smelter, owned by Bolivia's state mining company Corporación Minera de Bolivia, was restarted at the end of 2020. The Karchipampa smelter is a lead-silver smelter that has a capacity of 40,000 metric tons per year. Bolivia produced 930 metric tons (22,900,000 troy ounces) of silver in 2020 (Emery, 2021; Silver Institute, 2021, p. 64).

## References Cited

- Emery, Alex, 2021, Bolivia's Apr tin, zinc, lead silver exports rise as Comibol ramps up operations: S&P Global Platts Metals Daily, v. 10, no. 107, June 3, p. 8.
- Silver Institute, The, 2021, World silver survey, 2021: Washington, DC, The Silver Institute, April, 85 p. (Accessed June 25, at <https://www.silverinstitute.org/wp-content/uploads/2021/04/World-Silver-Survey-2021.pdf>.)
- Warwick, Filip, 2021a, Union at Vale's Sudbury nickel operations rejects latest contract offer: S&P Global Platts Metals Daily, v. 10, no. 115, June 15, p. 7.

Warwick, Filip, 2021b, Vale's Sudbury nickel-copper operations implement contingency plans as union rebuffs offer: S&P Global Platts Metals Daily, v. 10, no. 106, June 2, p. 9.  
 Vale S.A. 2021, Form 20-F: U.S. Securities and Exchange Commission, [variously paged]. (Accessed June 25, 2021, via

<http://www.vale.com/en/investors/information-market/annual-reports/20f/pages/default.aspx>.)

List services and web feed subscribers are the first to receive notification of USGS minerals information publications and data releases. For information on how to subscribe, go to <https://www.usgs.gov/centers/nmic/minerals-information-publication-list-services>.

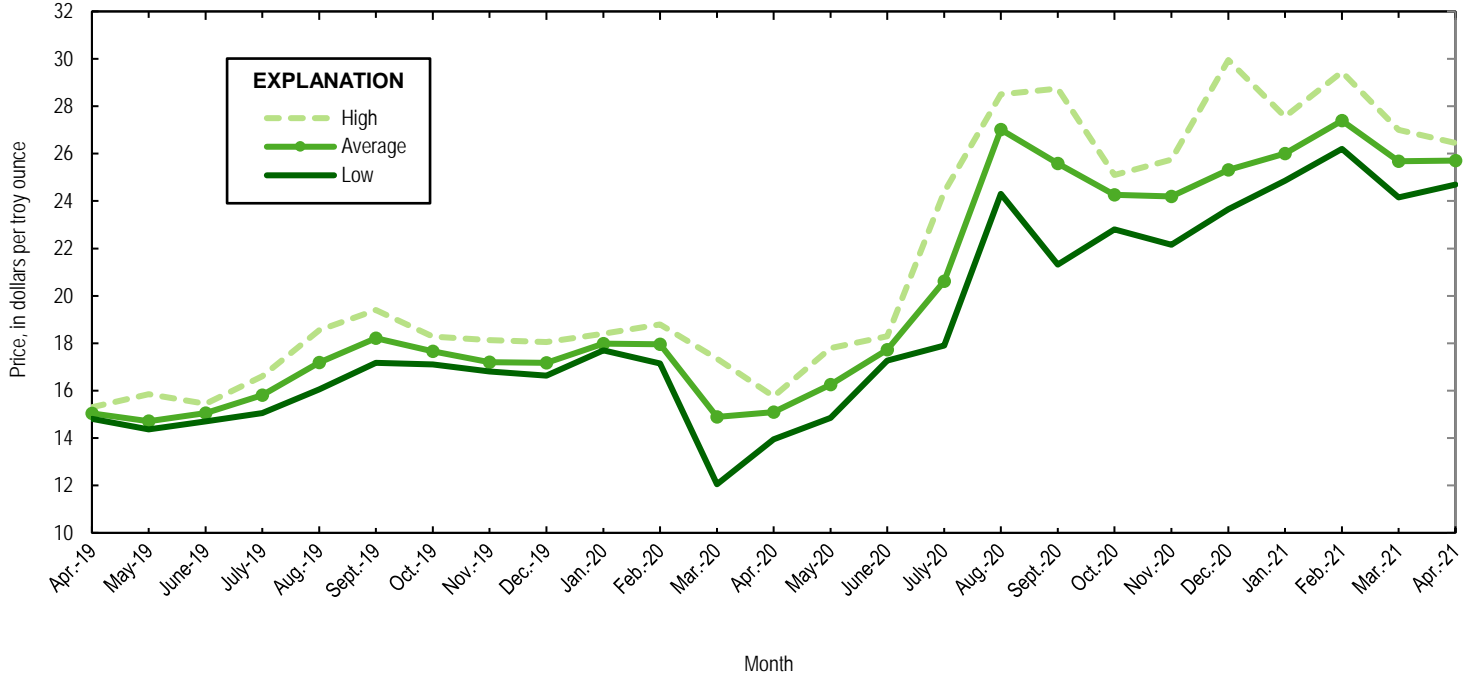


Figure 2. Engelhard monthly silver prices for April 2019 through April 2021. Source: S&P Global Platts Metals Week.

TABLE 1  
MINE PRODUCTION OF RECOVERABLE SILVER  
IN THE UNITED STATES, BY STATE<sup>1</sup>

(Kilograms)

	Nevada	Other States <sup>2</sup>	Total
2020: <sup>P</sup>			
April	12,300	58,200	70,500
May	12,500	63,500	75,900
June	12,800	62,500	75,300
July	12,200	76,000	88,200
August	12,300	75,000	87,300
September	12,500	73,700	86,200
October	12,000	76,400	88,400
November	12,600	73,500	86,100
December	12,700	80,800	93,500
January–December	149,000	837,000	986,000
2021:			
January	12,800 <sup>r</sup>	73,500 <sup>r</sup>	86,300 <sup>r</sup>
February	12,800	71,200 <sup>r</sup>	83,900 <sup>r</sup>
March	12,700	74,600 <sup>r</sup>	87,300 <sup>r</sup>
April	12,200	71,900	84,000
January–April	50,300	291,000	341,000

<sup>P</sup>Preliminary. <sup>r</sup>Revised.

<sup>1</sup>Data are rounded to no more than three significant digits; may not add to totals shown.

<sup>2</sup>Includes Alaska, Arizona, California, Colorado, Idaho, Missouri, Montana, New Mexico, South Carolina, South Dakota, and Utah.

TABLE 2  
SILVER PRICES

(Dollars per troy ounce)

	Price	Date
<u>Engelhard:</u>		
<u>2020:</u>		
Low	12.05	March 19
High	28.75	September 1
Average	20.57	XX
<u>2021:</u>		
<u>March:</u>		
Low	24.15	March 30, 31
High	27.00	March 1
Average	25.68	XX
<u>April</u>		
Low	24.70	April 1
High	26.45	April 27
Average	25.71	XX
<u>Year to date</u>		
Low	24.15	March 30, 31
High	29.45	Feb. 1
Average	26.20	XX
<u>Handy and Harman:</u>		
<u>2020, Average</u>		
	20.54	XX
<u>2021:</u>		
March	25.65	XX
April	25.69	XX
Year to date	26.13	XX
<u>London Final:<sup>1</sup></u>		
<u>2020, Average</u>		
	20.39	XX
<u>2021:</u>		
March	25.61	XX
April	25.64	XX
Year to date	26.13	XX

XX Not applicable.

<sup>1</sup>Reported as "London Spot/US Equiv."

Source: S&P Global Platts Metals Week.

TABLE 3  
U.S. IMPORTS OF SILVER<sup>1</sup>

Period and country or locality	Bullion		Doré		Ores and concentrates <sup>2</sup> Ash and residues		Total	
	Silver content (kilograms)	Value (thousands)	Silver content (kilograms)	Value (thousands)	Silver content (kilograms)	Value (thousands)	Silver content (kilograms)	Value (thousands)
2020	5,830,000 <sup>r</sup>	\$3,860,000 <sup>r</sup>	904,000 <sup>r</sup>	\$884,000 <sup>r</sup>	8,930 <sup>r</sup>	\$3,510	6,740,000 <sup>r</sup>	\$4,750,000 <sup>r</sup>
2021:								
February	392,000	337,000	51,000	61,100	291	270	443,000	398,000
March	521,000	442,000	106,000	102,000	11	2	627,000	544,000
April:								
Australia	38,700	30,900	--	--	--	--	38,700	30,900
Belgium	31	25	--	--	--	--	31	25
Canada	81,000	66,400	575	350	--	--	81,600	66,700
Chile	16,500	13,900	--	--	--	--	16,500	13,900
Colombia	--	--	363	300	--	--	363	300
Ecuador	--	--	48	35	--	--	48	35
Germany	2,090	1,790	898	763	--	--	2,980	2,550
Hong Kong	31,200	27,100	--	--	--	--	31,200	27,100
Indonesia	3,000	2,380	--	--	--	--	3,000	2,380
Italy	--	--	283	224	--	--	283	224
Mexico	131,000	106,000	63,300	60,400	--	--	194,000	167,000
Peru	2,660	2,310	--	--	--	--	2,660	2,310
Poland	24,600	20,700	12,000	10,300	--	--	36,600	31,000
Switzerland	41,600	36,000	--	--	--	--	41,600	36,000
Turkey	27,100	21,700	--	--	--	--	27,100	21,700
United Kingdom	237	182	--	--	--	--	237	182
Total	399,000	330,000	77,500	72,400	--	--	477,000	402,000
January–April	1,680,000	1,420,000	353,000	359,000	1,520	845	2,040,000	1,780,000

<sup>r</sup>Revised. -- Zero.

<sup>1</sup>Data are rounded to no more than three significant digits; may not add to totals shown.

<sup>2</sup>Includes silver content of base metal ores and concentrates.

Source: U.S. Census Bureau.

TABLE 4  
U.S. IMPORTS OF REFINED SILVER<sup>1</sup>

Period and country or locality	Other unwrought silver (gross weight)		Metal powder (gross weight)		Silver nitrate (gross weight)		Semi manufactured forms <sup>2</sup> (gross weight)		Waste and scrap (gross weight)	
	Quantity (kilograms)	Value (thousands)	Quantity (kilograms)	Value (thousands)	Quantity (kilograms)	Value (thousands)	Quantity (kilograms)	Value (thousands)	Quantity (kilograms)	Value (thousands)
2020	491,000	\$275,000	194,000	\$22,900	2,060 <sup>r</sup>	\$278 <sup>r</sup>	1,270,000	\$826,000	8,530,000	\$1,460,000 <sup>r</sup>
2021:										
February	30,500	26,000	16,200	1,960	137	27	75,800	64,600	592,000	93,900
March	21,800	17,300	26,400	6,140	194	54	157,000	133,000	733,000	177,000
April:										
Belgium	--	--	--	--	--	--	--	--	22,000	28
Brazil	--	--	--	--	--	--	--	--	19,500	168
Canada	1,900	792	386	20	--	--	--	--	128,000	9,390
China	--	--	300	32	--	--	--	--	3,300	36
Costa Rica	--	--	216	12	--	--	--	--	14,600	986
France	--	--	5,740	497	--	--	--	--	--	--
Germany	42	50	2,670	2,160	29	2	100	24	266	19,400
Hungary	6,090	237	390	30	--	--	--	--	--	--
India	--	--	400	374	--	--	4	4	1,230	812
Indonesia	--	--	4,080	278	--	--	--	--	--	--
Japan	--	--	4,390	456	--	--	15	17	--	--
Korea, Republic of	--	--	22	5	--	--	589	52	165	106
Malaysia	--	--	--	--	--	--	--	--	2,690	604
Mexico	33,300	26,900	--	--	--	--	16	2	31,400	4,330
Switzerland	--	--	156	131	--	--	18,300	15,300	--	--
Taiwan	--	--	--	--	--	--	82,300	72,100	94	42
Trinidad and Tobago	--	--	--	--	--	--	--	--	1,190	4,030
United Kingdom	7	6	--	--	330	9	--	--	148,000	60,300
Other	696	387	51	34	--	--	728	746	10,200	1,330
Total	42,000	28,400	18,800	4,030	359	11	102,000	88,200	383,000	102,000
January–April	131,000	102,000	77,500	13,900	1,020	114	401,000	338,000	2,410,000	518,000

<sup>r</sup>Revised. -- Zero.

<sup>1</sup>Data are rounded to no more than three significant digits; may not add to totals shown.

<sup>2</sup>Containing 99.5% or more by weight of silver.

Source: U.S. Census Bureau.

TABLE 5  
U.S. EXPORTS OF SILVER<sup>1</sup>

Period and country or locality	Bullion		Doré		Ores and concentrates <sup>2</sup> Ash and residues		Total	
	Silver content (kilograms)	Value (thousands)	Silver content (kilograms)	Value (thousands)	Silver content (kilograms)	Value (thousands)	Silver content (kilograms)	Value (thousands)
2020	130,000 <sup>r</sup>	\$84,400 <sup>r</sup>	10,500	\$9,490	562	\$341	141,000 <sup>r</sup>	\$94,300 <sup>r</sup>
2021:								
February	18,600	17,700	51	47	--	--	18,600	17,700
March	21,400	18,000	1,260	2,130	10	5	22,700	20,200
April:								
Australia	344	459	--	--	--	--	344	459
Canada	2,270	1,900	--	--	--	--	2,270	1,900
Cayman Islands	11	16	--	--	--	--	11	16
Czechia	40	151	--	--	--	--	40	151
Hungary	4	3	--	--	--	--	4	3
Israel	--	--	--	--	1	5	1	5
Japan	733	904	--	--	--	--	733	904
Malaysia	53	73	--	--	--	--	53	73
Mexico	17	16	--	--	--	--	17	16
Singapore	404	338	--	--	--	--	404	338
South Africa	10	9	--	--	--	--	10	9
Switzerland	12	16	--	--	--	--	12	16
Total	3,900	3,890	--	--	1	5	3,900	3,900
January-April	53,600	47,800	16,900	14,200	11	10	70,500	62,000

<sup>r</sup>Revised. -- Zero.

<sup>1</sup>Data are rounded to no more than three significant digits; may not add to totals shown.

<sup>2</sup>Includes silver content of base metal ores and concentrates.

Source: U.S. Census Bureau.

TABLE 6  
U.S. EXPORTS OF REFINED SILVER<sup>1</sup>

Period and country or locality	Other unwrought silver (gross weight)		Metal powder (gross weight)		Silver nitrate (gross weight)		Semi manufactured forms <sup>2</sup> (gross weight)		Waste and scrap (gross weight)	
	Quantity (kilograms)	Value (thousands)	Quantity (kilograms)	Value (thousands)	Quantity (kilograms)	Value (thousands)	Quantity (kilograms)	Value (thousands)	Quantity (kilograms)	Value (thousands)
2020	952,000 <sup>r</sup>	\$707,000	612,000 <sup>r</sup>	\$453,000	36,500 <sup>r</sup>	\$11,100	642,000 <sup>r</sup>	\$424,000 <sup>r</sup>	18,700,000	\$3,570,000
2021:										
February	223,000	205,000	44,800	42,600	3,540	1,660	62,200	53,800	1,420,000	252,000
March	322,000	273,000	52,200	48,400	5,040	2,480	231,000	196,000	1,380,000	305,000
April:										
Belgium	--	--	393	380	--	--	--	--	191,000	18,200
Canada	98,800	79,000	1,240	1,180	2,440	596	76,100	64,300	219,000	18,500
China	9	18	6,720	6,690	10	8	1,620	1,060	780	85
Costa Rica	55	40	47	52	--	--	107	75	--	--
Dominican Republic	150	128	--	--	2	3	98	74	--	--
France	(3)	3	7,320	6,310	--	--	550	370	--	--
Germany	44	107	1,840	1,620	18	9	476	360	251,000	124,000
Hong Kong	134	109	583	530	--	--	355	473	--	--
India	2,270	1,220	25	21	233	21	749	582	--	--
Italy	--	--	70	61	--	--	172	141	205,000	152,000
Japan	--	--	3,330	3,120	--	--	53	34	579,000	97,400
Korea, Republic of	--	--	4,050	3,840	77	15	1,030	864	55,800	1,460
Malaysia	45	17	420	433	--	--	239	249	--	--
Mexico	391	521	2,620	2,510	184	21	9,220	4,840	--	--
Netherlands	--	--	2,050	1,770	--	--	--	--	189	200
Singapore	12	18	3,620	3,220	1,000	576	127	138	1	6
Sweden	--	--	--	--	--	--	26	10	253,000	4,800
Switzerland	1	15	--	--	--	--	219	316	60	2,660
Taiwan	--	--	9,490	8,520	85	16	147	116	--	--
United Arab Emirates	162	40	3	3	--	--	333	167	--	--
United Kingdom	--	--	2,010	1,820	--	--	1,950	1,560	33,400	114,000
Other	446	260	927	897	440	47	4,180	2,750	23	3
Total	103,000	81,500	46,800	43,000	4,490	1,310	97,800	78,500	1,790,000	533,000
January–April	655,000	564,000	206,000	192,000	17,000	6,810	435,000	364,000	5,660,000	1,420,000

<sup>r</sup>Revised. -- Zero.

<sup>1</sup>Data are rounded to no more than three significant digits; may not add to totals shown.

<sup>2</sup>Containing 99.3% or more by weight of silver.

<sup>3</sup>Less than ½ unit.

Source: U.S. Census Bureau.