

Mineral Industry Surveys

For information, contact:

Amy C. Tolcin, Zinc Commodity Specialist
 National Minerals Information Center
 U.S. Geological Survey
 989 National Center
 Reston, VA 20192
 Telephone: (703) 648-4940 Fax: (703) 648-7757
 Email: atolcin@usgs.gov

Hodan A. Fatah (Data)
 Telephone: (703) 648-4971
 Fax: (703) 648-7975
 Email: hfatah@usgs.gov

Internet: <https://www.usgs.gov/centers/nmic>

ZINC IN MARCH 2021

Domestic mine production (recoverable) of zinc in March 2021 was 61,400 metric tons (t) (tables 1, 2). Average daily mine production in March was 1,980 t, 8% more than that in the previous month (revised) and slightly more than that in March 2020 (fig. 1).

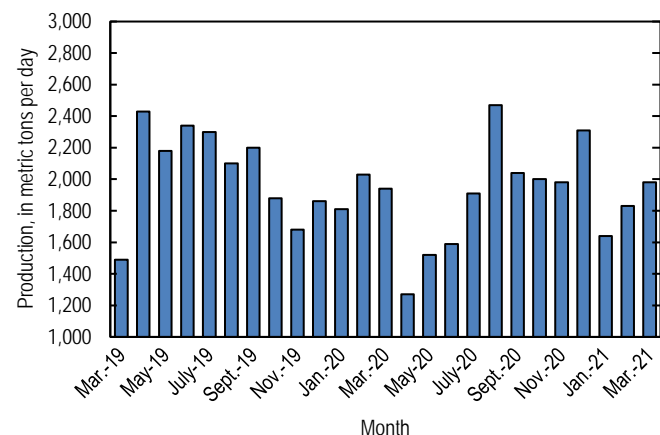


Figure 1. Average daily domestic zinc mine production (recoverable) from March 2019 through March 2021.

Stocks and Prices

Global London Metal Exchange Ltd. (LME) stocks of Special High Grade (SHG) zinc were 270,500 t at the end of March 2021, essentially unchanged from stocks at the end of the previous month and more than seven times higher than stocks at the end of March 2020 (fig. 2, table 8). Reported off-warrant stocks of SHG zinc in LME-approved warehouses at the end of March 2021 increased to 93,059 t from 87,440 t at the end of February 2021 (London Metal Exchange Ltd., 2021a, b).

The monthly average S&P Global Platts Metals Week North American SHG zinc price in March 2021 was \$1.34 per pound, slightly more than that in the previous month and 41% more

than that in March 2020. The March 2021 average LME cash price for SHG zinc was \$2,791.65 per metric ton (\$1.27 per pound), slightly more than that in the previous month and 47% more than that in March 2020 (fig. 3, table 7).

The North American premium to the LME cash price in March 2021 averaged 7.5 cents per pound, 3% less than that in the previous month and 11% less than that in March 2020 (fig. 3, table 7).

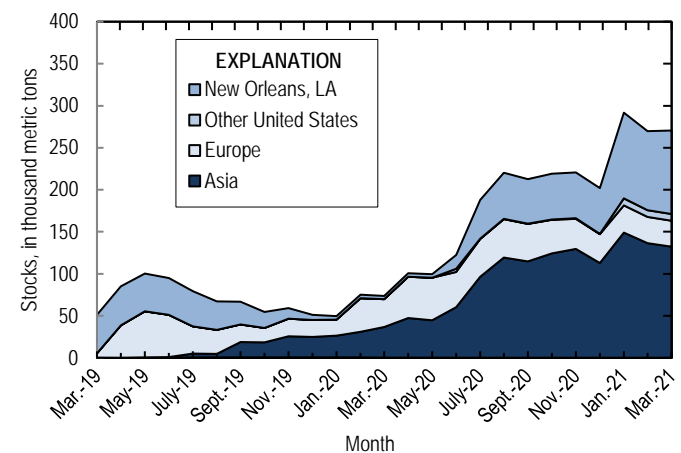


Figure 2. Global LME stocks of Special High Grade zinc, monthend, from March 2019 through March 2021. Source: London Metal Exchange Ltd.

References Cited

- London Metal Exchange Ltd., 2021a, Off warrant stock reporting February 2021: London, United Kingdom, London Metal Exchange Ltd. (Accessed April 27, 2021, via <https://www.lme.com/en-GB/Market-Data/Reports-and-data/Warehouse-and-stocks-reports/Off-warrant-stock-reporting>.)
- London Metal Exchange Ltd., 2021b, Off warrant stock reporting March 2021: London, United Kingdom, London Metal Exchange Ltd. (Accessed May 28, 2021, via <https://www.lme.com/en-GB/Market-Data/Reports-and-data/Warehouse-and-stocks-reports/Off-warrant-stock-reporting>.)

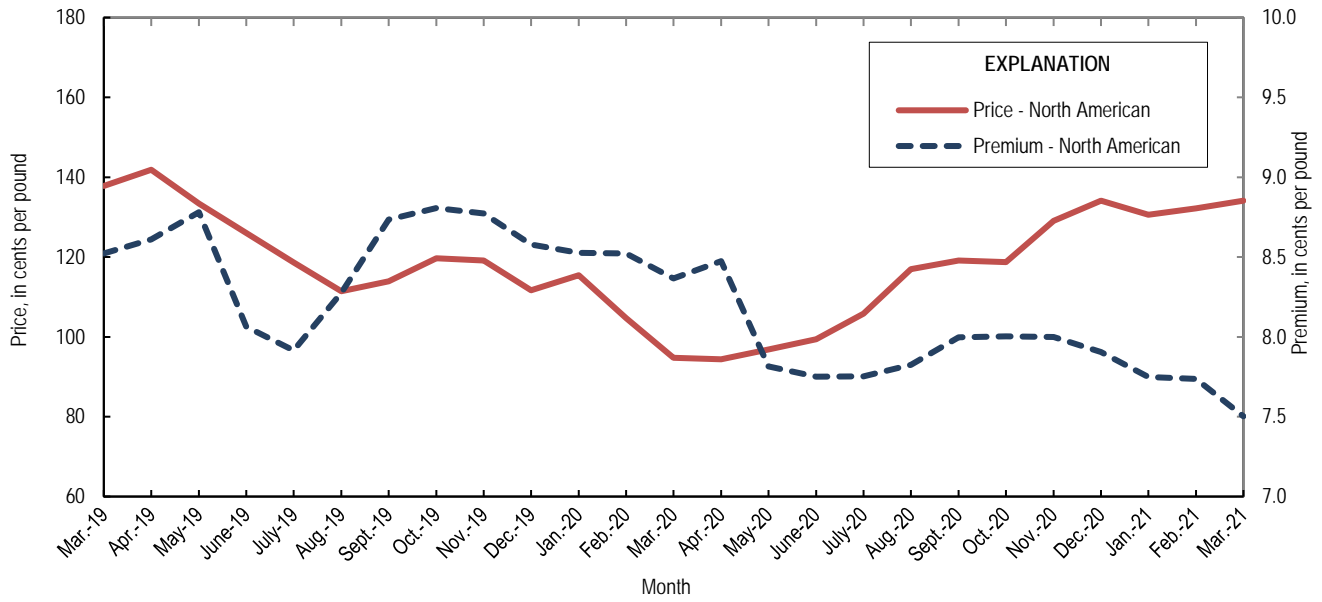


Figure 3. Average monthly North American price and premium for Special High Grade zinc from March 2019 through March 2021. Source: S&P Global Platts Metals Week.

List services and web feed subscribers are the first to receive notification of USGS minerals information publications and data releases. For information on how to subscribe, go to <https://www.usgs.gov/centers/nmic/minerals-information-publication-list-services>.

TABLE 1
SALIENT ZINC STATISTICS¹

(Metric tons, unless otherwise specified)

	2020	2021		
	January– December ^p	February	March	January– March ²
Production:				
Mine, zinc content of concentrate ³	718,000	52,300 ^r	62,800	167,000
Mine, recoverable zinc ³	697,000	51,200 ^r	61,400	163,000
Smelter, refined zinc ^e	180,000	18,000	18,000	54,000
Consumption of refined zinc, apparent ⁴	878,000	73,500	73,400	222,000
Imports for consumption:				
Ore and concentrate (zinc content)	3,170	74	68	6,160
Refined zinc	700,000	55,800	57,200	170,000
Exports:				
Ore and concentrate (zinc content)	549,000	18,700	10,600	41,800
Refined zinc	2,480	242	1,810	2,320
Price:⁵				
London Metal Exchange cash, average, dollars per metric ton	2,264.42	2,743.20	2,791.65	2,747.52
North American, ⁶ average, cents per pound	110.79	132.17	134.13	132.29

^eEstimated. ^pPreliminary. ^rRevised.

¹Data are rounded to no more than three significant digits, except prices; may not add to totals shown.

²May include revisions to previously published data.

³Reported zinc content in both zinc and lead concentrates.

⁴Smelter production plus imports for consumption minus domestic exports.

⁵Special High Grade Zinc.

⁶S&P Global Platts Metals Week.

TABLE 2
MINE AND SMELTER PRODUCTION OF ZINC
IN THE UNITED STATES¹

(Metric tons)

Period	Mine ²		Smelter ^c
	Zinc content	Recoverable	
2020:			
March	61,900	60,100	12,000
April	39,300	38,200	14,000
May	48,500	47,000	15,000
June	49,100	47,600	15,000
July	61,100	59,400	16,000
August	78,800	76,400	16,000
September	62,900	61,100	16,000
October	63,900	62,000	18,000
November	61,100	59,300	18,000
December	73,600	71,500	18,000
January–December	718,000	697,000	180,000
2021:			
January	51,800 ^r	50,700 ^r	18,000
February	52,300 ^r	51,200 ^r	18,000
March	62,800	61,400	18,000
January–March	167,000	163,000	54,000

^cEstimated. ^rRevised.

¹Data are rounded to no more than three significant digits; may not add to totals shown.

²Includes the zinc content in both lead and zinc concentrates.

TABLE 3
U.S. IMPORTS FOR CONSUMPTION OF ZINC¹

(Gross weight, unless otherwise specified)

Material	2020		2021			
	Quantity (metric tons)	Value (thousands)	March		January–March ²	
			Quantity (metric tons)	Value (thousands)	Quantity (metric tons)	Value (thousands)
Ore and concentrate (zinc content)	3,170	\$4,410	68	\$108	6,160	\$5,520
Unwrought:						
Refined zinc	700,000	1,600,000	57,200	160,000	170,000	471,000
Zinc alloys	1,370	3,680	579	1,680	1,620	4,490
Wrought:						
Bars, rods, profiles, wire	3,260	10,200	270	958	907	3,240
Plates, sheets, strip, foil	2,570	11,500	145	853	339	1,690
Ash and residues:						
Zinc dross and skimmings	3,800	5,680	387	673	1,020	1,900
Other (zinc content)	1,130	717	284	258	750	547
Other:						
Powders, flakes, dust	24,600	83,700	2,360	9,020	6,640	25,200
Waste and scrap	11,400	15,800	1,160	1,930	2,780	4,910
Chemicals:						
Lithopone	1,150	4,200	395	505	622	1,480
Zinc oxide	102,000	252,000	9,530	25,800	27,600	71,700
Zinc chloride	275	1,640	6	58	21	206
Zinc sulfate	92,600	70,900	11,200	9,790	25,200	22,100
Zinc sulfide	964	4,720	93	630	300	1,570

¹Data are rounded to no more than three significant digits.

²May include revisions to previously published data.

Source: U.S. Census Bureau.

TABLE 4
U.S. IMPORTS OF ZINC, BY TYPE OF MATERIAL AND COUNTRY OR LOCALITY¹

(Metric tons, gross weight, unless otherwise specified)

Material and country or locality	General imports			Imports for consumption		
	2020	2021		2020	2021	
		March	January–March ²		March	January–March ²
Ore and concentrate (zinc content):						
Canada	--	68	83	--	68	83
China	1,060	--	59	1,060	--	59
Mexico	(3)	--	394	(3)	--	394
Peru	2,100	--	5,620	2,100	--	5,620
Total	3,170	68	6,160	3,170	68	6,160
Refined zinc:						
Australia	33,000	--	--	2,000	--	1,500
Belgium	24,100	--	--	1	--	--
Brazil	21,900	--	--	13,400	--	--
Canada	489,000	47,000	123,000	489,000	47,000	123,000
China	108	--	(3)	108	--	(3)
Germany	--	34	854	--	34	854
Korea, Republic of	39,100	--	9,110	21,100	--	9,140
Mexico	130,000	7,250	25,300	130,000	7,250	25,300
Netherlands	1,470	--	--	--	--	--
Peru	44,400	2,920	7,490	44,400	2,920	7,490
Poland	100	--	--	100	--	--
Spain	20,000	--	--	123	--	2,670
Taiwan	24	--	--	24	--	--
Other	(3)	--	(3)	(3)	--	(3)
Total	803,000	57,200	166,000	700,000	57,200	170,000
Oxide:						
Australia	538	17	60	538	17	60
Canada	42,600	4,080	11,600	42,600	4,080	11,600
China	175	12	54	175	12	54
Germany	1,160	159	440	1,160	159	440
Greece	798	--	80	798	--	80
Japan	868	41	134	868	41	134
Mexico	43,100	4,160	11,800	43,100	4,160	11,800
Netherlands	9,030	645	2,060	9,030	645	2,060
Peru	3,850	350	1,270	3,850	350	1,270
Other	254	72	134	254	72	134
Total	102,000	9,530	27,600	102,000	9,530	27,600

-- Zero.

¹Data are rounded to no more than three significant digits; may not add to totals shown.

²May include revisions to previously published data.

³Less than ½ unit.

Source: U.S. Census Bureau.

TABLE 5
U.S. EXPORTS OF ZINC¹

(Gross weight, unless otherwise specified)

Material	2020		2021			
	Quantity (metric tons)	Value (thousands)	March		January–March ²	
			Quantity (metric tons)	Value (thousands)	Quantity (metric tons)	Value (thousands)
Ore and concentrate (zinc content)	549,000	\$806,000	10,600	\$22,500	41,800	\$73,700
Unwrought:						
Refined zinc	2,480	6,810	1,810	5,510	2,320	7,140
Zinc alloys	19,900	54,000	2,480	7,590	6,100	18,700
Wrought:						
Bars, rods, profiles, wire	9,500	28,900	962	3,050	2,720	8,710
Plates, sheets, strip, foil	5,460	20,300	714	2,880	2,000	7,820
Ash and residues:						
Hard zinc spelter	9,150	12,300	1,440	2,390	3,580	6,290
Other (zinc content)	23,000	30,700	2,920	5,010	6,690	10,700
Other:						
Powders, flakes, dust	13,600	49,500	913	3,260	2,410	8,420
Waste and scrap	25,000	29,600	3,150	3,960	8,660	11,300
Chemicals:						
Lithopone	522	1,900	36	191	121	608
Zinc oxide	44,900	56,000	8,230	11,500	19,500	27,100
Zinc chloride	419	747	79	155	108	199
Zinc sulfate	507	507	6	18	107	94
Zinc sulfide	1,420	13,000	83	1,640	648	4,850

¹Data are rounded to no more than three significant digits.

²May include revisions to previously published data.

Source: U.S. Census Bureau.

TABLE 6
U.S. EXPORTS OF ZINC, BY TYPE OF MATERIAL AND COUNTRY OR LOCALITY¹

(Metric tons, gross weight, unless otherwise specified)

Material and country or locality	2020	2021	
		March	January-March ²
Ore and concentrate (zinc content):			
Australia	63,300	--	--
Belgium	40,000	--	--
Canada	287,000	4,930	14,000
Finland	15,700	--	--
Germany	21,100	--	--
Italy	5,290	--	--
Japan	38,500	1,470	2,500
Korea, Republic of	59,200	4,220	13,000
Peru	120	--	--
Spain	18,400	--	12,300
Other	31	3	11
Total	549,000	10,600	41,800
Refined zinc:			
Canada	962	191	384
India	297	--	--
Mexico	833	1,620	1,930
Vietnam	164	--	--
Other	223	--	3
Total	2,480	1,810	2,320
Oxide:			
Australia	503	--	--
Brazil	282	57	76
Canada	3,290	387	985
France	253	72	72
India	385	90	215
Mexico	38,500	7,360	17,600
Other	1,660 [†]	263	500
Total	44,900	8,230	19,500

[†]Revised -- Zero.

¹Data are rounded to no more than three significant digits; may not add to totals shown.

²May include revisions to previously published data.

Source: U.S. Census Bureau.

TABLE 7
AVERAGE PRICES FOR SPECIAL HIGH GRADE ZINC

Period	North American		London Metal Exchange	
	Premium	Price ¹	cash ²	
	¢/lb.	¢/lb.	¢/lb.	\$/t
2020:				
March	8.4	94.79	86.42	1,905.33
April	8.5	94.39	85.91	1,894.08
May	7.8	96.87	89.06	1,963.40
June	7.8	99.40	91.65	2,020.61
July	7.8	105.83	98.08	2,162.24
August	7.8	117.00	109.17	2,406.83
September	8.0	119.15	111.15	2,450.50
October	8.0	118.75	110.75	2,441.55
November	8.0	129.10	121.10	2,669.69
December	7.9	134.11	126.21	2,782.36
January–December	8.1	110.79	102.71	2,264.42
2021:				
January	7.7	130.57	122.82	2,707.70
February	7.7	132.17	124.43	2,743.20
March	7.5	134.13	126.63	2,791.65
January–March	7.7	132.29	124.63	2,747.52

¹S&P Global Platts Metals Week North American price. Based on the London Metal Exchange cash price plus the North American premium.

²Average of the cash buyer price and the cash seller and settlement price.

Source: S&P Global Platts Metals Week.

TABLE 8
LONDON METAL EXCHANGE (LME) STOCKS OF SPECIAL HIGH GRADE ZINC, END OF PERIOD

(Metric tons)

Period	United States			Asia	Europe	Other	Total LME
	Baltimore, MD	New Orleans, LA	Total				
2020:							
March	--	4,000	4,000	30,750	32,950	200	37,150
April	--	4,200	4,200	36,650	49,225	100	53,425
May	--	4,175	4,175	44,700	50,675	25	99,575
June	3,825	16,675	20,500	60,425	41,625	--	122,550
July	475	46,075	46,550	96,525	44,900	--	187,975
August	475	54,650	55,125	119,300	45,700	--	220,125
September	475	52,950	53,425	114,575	44,575	--	212,575
October	475	54,500	54,975	124,200	40,025	--	219,200
November	475	54,500	54,975	129,700	35,825	--	220,500
December	475	54,500	54,975	113,025	34,075	--	202,075
2021:							
January	8,150	102,150	110,300	149,000	32,450	--	291,750
February	8,150	93,850	102,000	136,325	31,400	--	269,725
March	8,150	99,300	107,450	132,150	30,900	--	270,500

-- Zero.

Source: London Metal Exchange, Ltd.