

# Mineral Industry Surveys

## For information, contact:

Daniel M. Flanagan, Copper Commodity Specialist  
 National Minerals Information Center  
 U.S. Geological Survey  
 989 National Center  
 Reston, VA 20192  
 Telephone: (703) 648-7726, Fax: (703) 648-7757  
 Email: dflanagan@usgs.gov

Sheema Merchant (Data)  
 Telephone: (703) 659-9944  
 Fax: (703) 648-7975  
 Email: smerchant@usgs.gov

Internet: <https://www.usgs.gov/centers/nmic>

## COPPER IN MARCH 2021

In March 2021, domestic mine production of recoverable copper was 102,000 metric tons (t). The average daily mine production was 3,300 t, a decrease of 5% from that in February and 7% greater than that in March 2020 (fig. 1). Year-to-date recoverable mine output was 297,000 t, an increase of 3% compared with that through March 2020 (table 2).

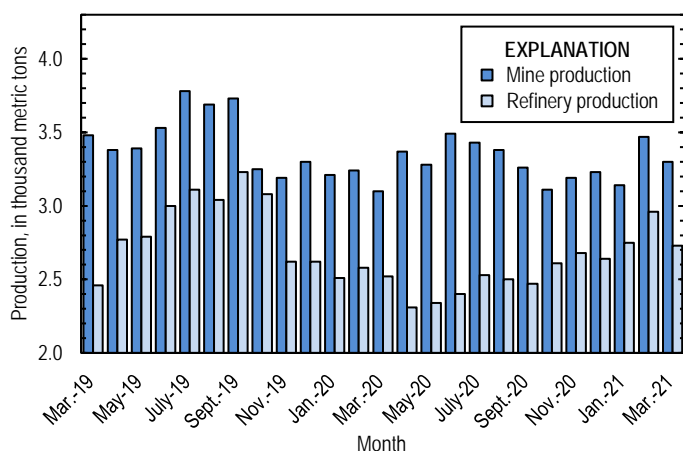


Figure 1. Average daily U.S. copper mine (recoverable) and refinery (primary and secondary) production from March 2019 through March 2021. Refinery production in November and December 2019 were withheld to avoid disclosing company proprietary data; the values shown reflect the daily average for cumulative production over this period rather than production in each month.

Owing to temporary closures of ASARCO LLC's smelter in Arizona and electrolytic refinery in Texas, smelter and electrolytic refinery production reported to the U.S. Geological Survey in March 2021 were withheld to avoid disclosing company proprietary data. Smelter and electrolytic refinery output in tables 3 and 4 are estimates based on information in quarterly company reports. The facilities shut down in October 2019 because of a worker strike, which reportedly ended in July 2020 (Wichner, 2021). As of March 2021, ASARCO had not announced when operations were expected to resume or a reason for the continued closures.

Estimated U.S. smelter production was 35,000 t in March 2021. Year-to-date estimated smelter production was 105,000 t, 17% higher than that through March 2020 (table 3).

Total refinery production in the United States was 84,700 t in March 2021; data for electrolytic and electrowon output, as well as refined production from scrap, are reported in table 4. Average daily total refinery production was 2,730 t, a decrease of 8% from that in February and 9% more than that in March 2020 (fig. 1). Year-to-date refinery output was 253,000 t, an increase of 10% relative to the same period in 2020 (table 4).

## Prices

In March 2021, the COMEX spot copper price rose for the eleventh consecutive month and averaged \$4.09 per pound, an increase of 6% from \$3.86 per pound in February and 73% higher than \$2.37 per pound in March 2020 (fig. 2, table 11). The average U.S. dealers buying price of number 2 copper scrap in March 2021 was \$2.97 per pound, an increase of 10% compared with \$2.70 per pound in February and 56% greater than \$1.90 per pound in March 2020 (fig. 2, table 12).

## Stocks

Refined copper stocks in the United States totaled 108,000 t at the end of March 2021, a slight decline from those in February and 5% lower than those in March 2020. COMEX stocks increased by 2,590 t (4%), and London Metal Exchange Ltd. stocks in U.S. warehouses fell by 2,200 t (17%) compared with those at the end of February (fig. 3, table 10).

## Industry News

**Papua New Guinea.**—The Ok Tedi Mine shut down from March 19 through March 31 because of an outbreak of COVID-19 within the workforce. Ok Tedi Mining Ltd. anticipated that the ramp up to full production would be completed by the middle of April. In 2020, output of copper in concentrates at Ok Tedi was 82,000 t (Ok Tedi Mining Ltd., 2021a, p. 25; b, c).

**Russia.**—MMC Norilsk Nickel (Nornickel) suspended operations at the flooded Oktyabrsky and Taimyrsky Mines in

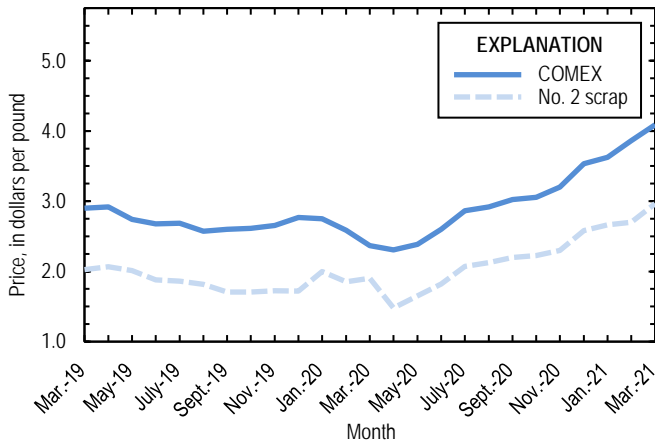


Figure 2. Monthly average COMEX copper price and no. 2 copper scrap dealers buying price from March 2019 through March 2021. As of January 2020, no. 2 prices were available only for the entire United States, whereas no. 2 prices were available only for individual domestic markets prior to January 2020. Prices shown prior to January 2020 are for New York dealers no. 2 scrap. Sources: Fastmarkets-AMM and S&P Global Platts Metals Week.

late February. On March 27, the company successfully halted the inflow of groundwater into the mines and began working to restore normal operating conditions. As of the end of March, Norinickel expected full production at Oktyabrsky and Taimyrsky to resume in May and June, respectively, and that the disruption would result in 65,000 t of lost copper production in 2021. Norinickel also announced that it permanently closed its copper smelter in Monchegorsk on March 20 because of high sulfur dioxide emissions. Copper concentrates will be diverted to other Norinickel smelters until the company completes the dismantling of the current smelter and construction of a new facility (MMC Norilsk Nickel, 2021a, b, c).

**References Cited**

MMC Norilsk Nickel, 2021a, Norilsk Division completes phase 2 of repairs at Oktyabrsky and Taimyrsky Mines: Moscow, Russia, MMC Norilsk Nickel press release, March 29. (Accessed August 16, 2021, at <https://www.nornickel.com/news-and-media/press-releases-and-news/norilsk-division-complets-phase-2-of-repairs-at-oktyabrsky-and-taimyrsky-mines/type=releases>.)

MMC Norilsk Nickel, 2021b, Norinickel cuts emissions at Kola Peninsula by 85% in 2021: Moscow, Russia, MMC Norilsk Nickel press release, March 22. (Accessed August 16, 2021, at <https://www.nornickel.com/news-and-media/press-releases-and-news/nornickel-cuts-emissions-at-kola-peninsula-by-85-in-2021/type=esg>.)

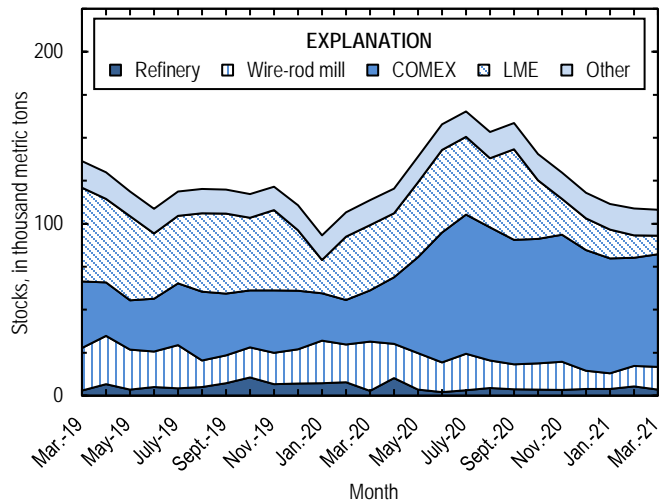


Figure 3. Domestic refined copper stocks at end of month, by type, from March 2019 through March 2021. Sources: Fastmarkets-AMM, London Metal Exchange Ltd., and U.S. Geological Survey.

MMC Norilsk Nickel, 2021c, Norinickel will set a timeline to restore operations at mines and Norilsk concentrator: Moscow, Russia, MMC Norilsk Nickel press release, March 3. (Accessed August 16, 2021, at <https://www.nornickel.com/news-and-media/press-releases-and-news/nornickel-will-set-a-timeline-to-restore-operations-at-mines-and-norilsk-concentrator/type=releases>.)

Ok Tedi Mining Ltd., 2021a, Annual review 2020: Tabubil, Papua New Guinea, Ok Tedi Mining Ltd., 60 p. (Accessed August 16, 2021, via <https://oktedi.com/who-we-are/annual-performance/>.)

Ok Tedi Mining Ltd., 2021b, Ok Tedi resumes operations: Tabubil, Papua New Guinea, Ok Tedi Mining Ltd. news release, March 18. (Accessed August 16, 2021, via <https://oktedi.com/media-centre/latest-news/>.)

Ok Tedi Mining Ltd., 2021c, Ok Tedi suspends operations to control COVID-19 spread: Tabubil, Papua New Guinea, Ok Tedi Mining Ltd. news release, March 18. (Accessed August 16, 2021, via <https://oktedi.com/media-centre/latest-news/>.)

Wichner, David, 2021, Tucson-based Asarco facing new charges over post-strike labor practices: Arizona Daily Star [Tucson, AZ], April 26. (Accessed May 14, 2021, at [https://tucson.com/business/tucson-based-asarco-facing-new-charges-over-post-strike-labor-practices/article\\_ea8fb10c-a468-11eb-9063-3b0056bca30b.html](https://tucson.com/business/tucson-based-asarco-facing-new-charges-over-post-strike-labor-practices/article_ea8fb10c-a468-11eb-9063-3b0056bca30b.html).)

List services and web feed subscribers are the first to receive notification of USGS minerals information publications and data releases. For information on how to subscribe, go to <https://www.usgs.gov/centers/nmic>.

TABLE 1  
SALIENT STATISTICS OF THE COPPER INDUSTRY IN THE UNITED STATES<sup>1</sup>

(Metric tons of copper content, unless otherwise specified)

	Source table <sup>2</sup>	2020 <sup>p</sup>	2021			January– March
			January	February	March	
<b>Production:</b>						
<b>Primary:</b>						
Mine, recoverable	(2)	1,200,000	97,500	97,200	102,000	297,000
Smelter	(3)	315,000 <sup>e</sup>	35,000 <sup>e</sup>	35,000 <sup>e</sup>	35,000 <sup>e</sup>	105,000 <sup>e</sup>
<b>Refinery:</b>						
Electrolytic, domestic and foreign	(4)	315,000 <sup>e</sup>	35,000 <sup>e</sup>	35,000 <sup>e</sup>	35,000 <sup>e</sup>	105,000 <sup>e</sup>
Electrowon	(4)	559,000	47,100	43,900	46,500	137,000
Total	(4)	874,000	82,100	78,900	81,500	242,000
<b>Secondary recoverable copper:<sup>3</sup></b>						
Refineries	(5)	43,200	3,220	4,060	3,220	10,500
Ingot makers <sup>4</sup>	(5)	57,900	4,820	4,820	4,820	14,500
Brass and wire-rod mills	(5)	670,000	57,800	55,200	57,000	170,000
Foundries, etc. <sup>4</sup>	(5)	36,700	3,060	3,060	3,060	9,180
<b>Consumption:</b>						
Apparent, primary refined and copper from old scrap	(8)	1,660,000	140,000	165,000	192,000	497,000
Reported, refined copper	(7)	1,710,000	134,000	137,000	159,000	429,000
Purchased copper-base scrap (gross weight)	(9)	938,000	85,900	81,800	85,700	253,000
<b>Stocks at end of period:</b>						
Total refined	(10)	118,000	111,000	109,000	108,000	108,000
Blister and anode	(10)	9,380	8,800	23,800	29,200	29,200
Price, U.S. producers cathode (cents per pound) <sup>5</sup>	(11)	286.745	369.318	393.314	416.141	392.924
<b>Imports:<sup>6</sup></b>						
Ore and concentrates	(13)	2,170	88	2,840	1,610	4,540
Refined	(13)	676,000	42,400	73,000	99,700	215,000
<b>Exports:<sup>6</sup></b>						
Ore and concentrates	(14)	383,000	37,300	27,400	43,700	108,000
Refined	(14)	41,200	4,350	2,970	3,360	10,700

<sup>e</sup>Estimated. <sup>p</sup>Preliminary.

<sup>1</sup>Data are rounded to no more than three significant digits, except prices; may not add to totals shown.

<sup>2</sup>Numbers in parentheses refer to the tables where these data are located.

<sup>3</sup>Copper recovered from copper-base scrap only.

<sup>4</sup>Estimated based on the monthly average of 2018 annual data.

<sup>5</sup>Source: S&P Global Platts Metals Week.

<sup>6</sup>Source: U.S. Census Bureau.

TABLE 2  
MINE PRODUCTION OF RECOVERABLE COPPER IN THE UNITED STATES<sup>1</sup>

(Metric tons)

Period	Recoverable copper			Contained copper		
	Arizona	Others <sup>2</sup>	Total	Electrowon	Concentrates <sup>3</sup>	Total
2020: <sup>P</sup>						
January–March	204,000	85,800	290,000	131,000	165,000	296,000
March	67,600	28,400	96,000	44,900	53,100	98,000
April	76,400	24,700	101,000	44,600	58,800	103,000
May	75,500	26,200	102,000	48,200	55,700	104,000
June	77,800	26,800	105,000	48,300	58,600	107,000
July	79,500	26,700	106,000	49,600	58,900	109,000
August	78,900	25,900	105,000	49,100	57,900	107,000
September	72,600	25,300	97,900	45,700	54,300	100,000
October	71,000	25,500	96,500	47,600	50,800	98,500
November	69,900	25,800	95,700	47,100	50,600	97,700
December	75,000	25,100	100,000	48,400	53,800	102,000
January–December	880,000	318,000	1,200,000	559,000	665,000	1,220,000
2021:						
January	71,600	25,900	97,500	47,100	52,500	99,600
February	70,500	26,700	97,200	43,900	55,400	99,300
March	73,900	28,500	102,000	46,500	58,100	105,000
January–March	216,000	81,000	297,000	137,000	166,000	304,000

<sup>P</sup>Preliminary.

<sup>1</sup>Data are rounded to no more than three significant digits; may not add to totals shown.

<sup>2</sup>Includes production from Michigan, Missouri, Montana, Nevada, New Mexico, and Utah.

<sup>3</sup>Includes copper content of precipitates and other metal concentrates.

TABLE 3  
COPPER PRODUCED AT SMELTERS IN  
THE UNITED STATES<sup>1,2</sup>

(Metric tons, copper content)

Period	Anode production <sup>e, 3</sup>
2020: <sup>p</sup>	
January–March	90,000
March	30,000
April	20,000
May	20,000
June	20,000
July	25,000
August	25,000
September	25,000
October	30,000
November	30,000
December	30,000
January–December	315,000
2021:	
January	35,000
February	35,000
March	35,000
January–March	105,000

<sup>e</sup>Estimated. <sup>p</sup>Preliminary.

<sup>1</sup>Data are rounded to no more than three significant digits; may not add to totals shown.

<sup>2</sup>Includes blister and copper anode from primary or secondary sources.

<sup>3</sup>To avoid disclosing company proprietary data, monthly smelter production data are estimates based on information in quarterly public company reports and do not reflect actual production reported to the U.S. Geological Survey.

TABLE 4  
U.S. PRODUCTION OF REFINED COPPER, BY SOURCE AND METHOD OF RECOVERY<sup>1</sup>

(Metric tons)

Period	Primary materials			Scrap	Total refined
	Electrolytically refined <sup>e, 2, 3</sup>	Electrowon	Total		
2020: <sup>P</sup>					
January–March	90,000	131,000	221,000	10,300	231,000
March	30,000	44,900	74,900	3,220	78,100
April	20,000	44,600	64,600	4,530	69,100
May	20,000	48,200	68,200	4,380	72,600
June	20,000	48,300	68,300	3,620	71,900
July	25,000	49,600	74,600	3,720	78,400
August	25,000	49,100	74,100	3,380	77,500
September	25,000	45,700	70,700	3,490	74,200
October	30,000	47,600	77,600	3,220	80,900
November	30,000	47,100	77,100	3,290	80,400
December	30,000	48,400	78,400	3,300	81,700
January–December	315,000	559,000	874,000	43,200	918,000
2021:					
January	35,000	47,100	82,100	3,220	85,300
February	35,000	43,900	78,900	4,060	82,900
March	35,000	46,500	81,500	3,220	84,700
January–March	105,000	137,000	242,000	10,500	253,000

<sup>e</sup>Estimated. <sup>P</sup>Preliminary.

<sup>1</sup>Data are rounded to no more than three significant digits; may not add to totals shown.

<sup>2</sup>From domestic and foreign source materials.

<sup>3</sup>To avoid disclosing company proprietary data, monthly electrolytically refined production data are estimates based on information in quarterly public company reports and do not reflect actual production reported to the U.S. Geological Survey.

TABLE 5  
COPPER RECOVERABLE IN UNALLOYED AND ALLOYED FORM FROM PURCHASED COPPER-BASE SCRAP  
IN THE UNITED STATES<sup>1</sup>

(Metric tons, copper content)

Period	Refineries <sup>2</sup>		Ingot makers <sup>3</sup>		Brass and wire-rod mills		Foundries, etc. <sup>3</sup>		Total <sup>4</sup>
	New scrap <sup>e</sup>	Old scrap	New scrap	Old scrap	New scrap	Old scrap	New scrap	Old scrap	
2020: <sup>p</sup>									
January–March	5,030	5,270	2,300	12,200	158,000	10,700	6,440	2,740	203,000
March	1,680	1,540	768	4,060	52,100	3,370	2,150	913	66,600
April	1,680	2,850	768	4,060	51,800	2,950	2,150	913	67,100
May	1,680	2,700	768	4,060	51,300	2,600	2,150	913	66,200
June	1,680	1,940	768	4,060	51,700	3,030	2,150	913	66,300
July	1,680	2,040	768	4,060	53,400	3,290	2,150	913	68,300
August	1,680	1,700	768	4,060	52,200	3,120	2,150	913	66,600
September	1,680	1,810	768	4,060	50,700	3,300	2,150	913	65,400
October	1,680	1,540	768	4,060	53,600	3,540	2,150	913	68,300
November	1,680	1,620	768	4,060	52,900	3,000	2,150	913	67,100
December	1,680	1,620	768	4,060	55,800	2,590	2,150	913	69,600
January–December	20,100	23,100	9,220	48,700	631,000	38,100	25,800	11,000	807,000
2021:									
January	1,680	1,540	768	4,060	53,700	4,110	2,150	913	68,900
February	1,680	2,380	768	4,060	51,700	3,500	2,150	913	67,100
March	1,680	1,540	768	4,060	53,100	3,870	2,150	913	68,100
January–March	5,030	5,460	2,300	12,200	158,000	11,500	6,440	2,740	204,000

<sup>e</sup>Estimated. <sup>p</sup>Preliminary.

<sup>1</sup>Data are rounded to no more than three significant digits; may not add to totals shown.

<sup>2</sup>Electrolytically refined and fire refined from scrap based on source of material at smelter or refinery level.

<sup>3</sup>Monthly data estimated based on the monthly average of 2018 annual data.

<sup>4</sup>Does not include an estimate, based on reported 2018 annual data, of 3,380 tons per month from new scrap and 2,710 tons per month from old scrap of copper recovered from scrap other than copper-base.

TABLE 6  
U.S. PRODUCTION, SHIPMENTS, AND STOCKS OF BRASS AND WIRE-ROD SEMIFABRICATES<sup>1</sup>

(Metric tons, gross weight)

Period	Production		Shipments		Stocks, end of period	
	Brass mills	Wire-rod mills	Brass mills	Wire-rod mills	Brass mills	Wire-rod mills
2020: <sup>p</sup>						
January–March	222,000	327,000	222,000	323,000	30,100	27,800
March	74,500	108,000	74,100	112,000	30,100	27,800
April	72,500	94,600	73,500	96,200	29,000	26,100
May	73,400	95,300	73,400	91,400	29,000	30,000
June	73,700	89,400	73,600	96,100	29,200	23,400
July	73,500	108,000	73,300	104,000	29,300	27,000
August	73,700	104,000	73,600	111,000	29,400	20,000
September	73,800	107,000	73,700	108,000	29,500	18,600
October	74,400	108,000	74,900	110,000	29,000	16,400
November	73,600	106,000	73,600	106,000	29,000	16,000
December	73,700	101,000	74,000	97,800	28,700	19,000
January–December	884,000	1,240,000	885,000	1,240,000	28,700	19,000
2021:						
January	73,600	104,000	74,000	106,000	28,300	16,800
February	74,100 <sup>r</sup>	96,600	73,800 <sup>r</sup>	97,600	28,600	15,800
March	74,700	119,000	74,500	117,000	28,800	15,000
January–March	222,000	320,000	222,000	321,000	28,800	15,000

<sup>p</sup>Preliminary. <sup>r</sup>Revised.

<sup>1</sup>Data are rounded to no more than three significant digits; may not add to totals shown.



TABLE 7  
U.S. CONSUMPTION OF REFINED COPPER<sup>1</sup>

(Metric tons)

Period	Brass mills	Wire-rod mills	Other plants <sup>2</sup>	Total
2020: <sup>p</sup>				
January–March	102,000	316,000	16,300	434,000
March	33,600	97,900	5,450	137,000
April	34,500	102,000	5,450	142,000
May	34,100	94,500	5,450	134,000
June	34,700	88,200	5,450	128,000
July	34,300	107,000	5,450	147,000
August	34,700	103,000	5,450	143,000
September	34,600	106,000	5,450	146,000
October	34,600	106,000	5,450	147,000
November	34,600	105,000	5,450	145,000
December	34,800	99,900	5,450	140,000
January–December	413,000	1,230,000	65,400	1,710,000
2021:				
January	34,700	93,400	5,450	134,000
February	34,900	96,100	5,450	137,000
March	35,300	119,000	5,450	159,000
January–March	105,000	308,000	16,300	429,000

<sup>p</sup>Preliminary.

<sup>1</sup>Data are rounded to no more than three significant digits; may not add to totals shown.

<sup>2</sup>Monthly consumption data by ingot makers, chemical plants, foundries, and miscellaneous manufacturers are estimated based on the monthly average of 2018 annual data.

TABLE 8  
U.S. APPARENT CONSUMPTION OF COPPER<sup>1</sup>

(Metric tons)

Period	Primary refined copper production	Copper in old scrap <sup>2</sup>	Refined imports for consumption <sup>3</sup>	Refined exports <sup>3</sup>	Stock change during period	Apparent consumption
2020: <sup>p</sup>						
January–March	221,000	39,000	167,000	10,400	2,970	413,000
March	74,900	12,600	69,800	3,730	6,860	147,000
April	64,600	13,500	74,900	1,550	6,790	145,000
May	68,200	13,000	66,200	540	18,600	128,000
June	68,300	12,700	63,300	1,220	18,900	124,000
July	74,600	13,000	37,300	5,300	7,430	112,000
August	74,100	12,500	59,800	6,470	-12,100	152,000
September	70,700	12,800	39,900	4,570	5,410	113,000
October	77,600	12,800	57,300	2,930	-18,100	163,000
November	77,100	12,300	53,300	3,090	-10,800	150,000
December	78,400	11,900	57,400	5,150	-11,700	154,000
January–December	874,000	153,000	676,000	41,200	7,370	1,660,000
2021:						
January	82,100	13,300	42,400	4,350	-6,490	140,000
February	78,900	13,600	73,000	2,970	-2,600	165,000
March	81,500	13,100	99,700	3,360	-852	192,000
January–March	242,000	40,000	215,000	10,700	-9,940	497,000

<sup>p</sup>Preliminary.

<sup>1</sup>Data are rounded to no more than three significant digits; may not add to totals shown.

<sup>2</sup>Copper recovered from old scrap and converted to refined metal and alloys. Includes reported monthly production of copper from old scrap of copper-base, an estimate for annual reporters, and a monthly average of copper from non-copper-base materials based on 2018 annual data.

<sup>3</sup>Source: U.S. Census Bureau.

TABLE 9  
U.S. CONSUMPTION OF PURCHASED COPPER-BASE SCRAP<sup>1</sup>

(Metric tons, gross weight)

Period	Smelters and refineries		Ingot makers <sup>2</sup>		Brass and wire-rod mills <sup>3</sup>		Foundries, etc. <sup>2</sup>		Total scrap used
	New scrap <sup>c</sup>	Old scrap	New scrap	Old scrap	New scrap	Old scrap	New scrap	Old scrap	
2020: <sup>p</sup>									
January–March	5,190	5,430	6,160	14,400	182,000	11,300	7,700	3,020	236,000
March	1,730	1,590	2,050	4,790	60,300	3,590	2,570	1,010	77,600
April	1,730	2,940	2,050	4,790	59,900	3,150	2,570	1,010	78,100
May	1,730	2,790	2,050	4,790	59,500	2,760	2,570	1,010	77,200
June	1,730	2,000	2,050	4,790	59,800	3,160	2,570	1,010	77,100
July	1,730	2,100	2,050	4,790	61,400	3,340	2,570	1,010	79,000
August	1,730	1,750	2,050	4,790	60,200	3,200	2,570	1,010	77,300
September	1,730	1,870	2,050	4,790	58,700	3,410	2,570	1,010	76,100
October	1,730	1,590	2,050	4,790	61,700	3,710	2,570	1,010	79,200
November	1,730	1,670	2,050	4,790	60,900	3,130	2,570	1,010	77,900
December	1,730	1,670	2,050	4,790	64,000	2,750	2,570	1,010	80,500
January–December	20,700	23,800	24,600	57,500	729,000	39,900	30,800	12,100	938,000
2021:									
January	1,730	1,590	2,050	4,790	68,000	4,190	2,570	1,010	85,900
February	1,730	2,460	2,050	4,790	63,600	3,580	2,570	1,010	81,800
March	1,730	1,590	2,050	4,790	68,000	3,970	2,570	1,010	85,700
January–March	5,190	5,630	6,160	14,400	200,000	11,700	7,700	3,020	253,000

<sup>c</sup>Estimated. <sup>p</sup>Preliminary.

<sup>1</sup>Data are rounded to no more than three significant digits; may not add to totals shown.

<sup>2</sup>Monthly data estimated based on the monthly average of 2018 annual data.

<sup>3</sup>Consumption at brass and wire-rod mills assumed equal to receipts.

TABLE 10  
COPPER STOCKS IN THE UNITED STATES AT END OF PERIOD<sup>1</sup>

(Metric tons)

Period	Blister and anode <sup>2</sup>	Refined copper					LME <sup>4</sup>	Total refined
		Refineries	Wire-rod mills	Brass mills	Other <sup>3</sup>	Comex		
<b>2020:<sup>P</sup></b>								
March	7,940	2,750	28,600	7,290	7,070	29,800	38,100	114,000
April	7,430	10,300	19,900	7,210	7,070	38,700	37,200	120,000
May	11,900	3,550	21,200	7,730	7,070	55,900	43,500	139,000
June	11,000	2,070	17,200	7,900	7,070	75,600	48,000	158,000
July	11,300	3,090	21,200	7,770	7,070	81,000	45,200	165,000
August	15,700	4,490	15,900	8,210	7,070	77,400	40,200	153,000
September	13,500	3,730	14,500	8,200	7,070	72,400	52,700	159,000
October	15,200	3,460	15,300	8,170	7,070	72,500	34,000	140,000
November	12,500	3,420	16,200	8,100	7,070	74,000	20,900	130,000
December	9,380	3,850	10,700	7,850	7,070	70,200	18,300	118,000
<b>2021:</b>								
January	8,800	3,810	9,190	7,970	7,070	66,800	16,700	111,000
February	23,800	5,310	11,900	8,610	7,070	62,900	13,100	109,000
March	29,200	3,470	13,200	7,900	7,070	65,500	10,900	108,000

<sup>P</sup>Preliminary.

<sup>1</sup>Data are rounded to no more than three significant digits; may not add to totals shown.

<sup>2</sup>Copper content.

<sup>3</sup>Monthly estimates based on 2018 annual data, comprising stocks at ingot makers, chemical plants, foundries, and miscellaneous manufacturers.

<sup>4</sup>London Metal Exchange Ltd., U.S. warehouses.

TABLE 11  
AVERAGE PRICE OF COPPER IN THE UNITED STATES  
AND ON THE LONDON METAL EXCHANGE

(Cents per pound)

Period	U.S. producers cathode <sup>1</sup>	Comex first position <sup>2</sup>	LME cash price Grade A
2020:			
March	243.464	236.714	234.886
April	236.881	230.631	228.985
May	245.090	238.715	237.402
June	266.305	259.805	260.470
July	293.300	286.600	288.202
August	298.377	291.752	294.685
September	309.052	302.302	304.470
October	312.495	305.695	304.033
November	327.338	320.338	320.392
December	360.470	353.470	351.772
Year	286.745	279.948	279.797
2021:			
January	369.318	362.318	361.536
February	393.314	386.126	383.750
March	416.141	408.828	408.459
January–March	392.924	385.757	384.582

<sup>1</sup>Sum of “Comex high grade first position” and “NY dealer premium cathode.”

<sup>2</sup>Listed as “Comex high grade first position.”

Source: S&P Global Platts Metals Week.

TABLE 12  
AVERAGE BUYING PRICES FOR COPPER SCRAP IN THE UNITED STATES

(Cents per pound)

Period	Brass mills No. 1 scrap	Refiners No. 2 scrap	Dealers (United States)	
			No. 2 scrap	Red brass turnings and borings
2020:				
March	223.75	197.73	190.00	139.00
April	219.33	196.05	148.00	125.00
May	230.18	208.95	165.00	111.00
June	253.82	232.41	182.09	120.55
July	279.55	258.32	207.09	130.00
August	282.05	258.79	212.52	124.76
September	291.05	262.19	220.00	128.86
October	291.93	261.84	222.73	130.00
November	306.26	277.53	230.00	139.47
December	339.98	314.75	258.18	165.45
Year	268.76	243.47	201.72	130.67
2021:				
January	349.74	320.61	266.50	167.00
February	370.89	338.87	270.00	175.00
March	392.04	351.52	296.50	185.50
January–March	370.89	337.00	277.67	175.83

Source: Fastmarkets-AMM.

TABLE 13  
U.S. IMPORTS FOR CONSUMPTION OF COPPER (UNMANUFACTURED), BY CLASS<sup>1</sup>

(Metric tons, copper content)

Country or locality	Ore and concentrates <sup>2</sup>			Matte, ash, and precipitates <sup>3</sup>			Blister and anodes <sup>4</sup>			Refined <sup>5</sup>		
	2021			2021			2021			2021		
	2020	January– March	January– March	2020	January– March	January– March	2020	January– March	January– March	2020	January– March	January– March
Bahrain	--	--	--	--	--	--	--	--	--	76	--	--
Belgium	--	--	--	354	--	--	--	--	--	--	--	--
Bolivia	--	--	--	--	--	--	--	--	--	1,030	--	192
Canada	2,170	1,610	4,540	459	35	122	(6)	--	(6)	149,000	13,700	39,900
Chile	--	--	--	--	--	--	--	--	--	410,000	80,000	145,000
China	--	--	--	(6)	--	--	--	--	--	426	138	201
Congo (Kinshasa)	--	--	--	--	--	--	--	--	--	148	--	--
Finland	--	--	--	--	--	--	275	30	62	--	18	18
Germany	--	--	--	--	--	102	(6)	--	(6)	1,910	155	444
Japan	--	(6)	(6)	176	--	48	(6)	--	--	2,060	182	344
Korea, Republic of	--	--	--	--	--	--	(6)	(6)	(6)	72	10	19
Mexico	--	--	--	(6)	7	7	(6)	--	--	95,200	4,630	20,400
Peru	--	--	--	--	--	--	--	--	--	14,500	653	5,160
Spain	--	--	--	49	--	--	--	--	--	654	--	--
Other	--	--	--	22	21	21	5	4	5	50	201	3,190
Total	2,170	1,610	4,540	1,060	64	301	281	34	68	676,000	99,700	215,000

-- Zero.

<sup>1</sup>Data are rounded to no more than three significant digits; may not add to totals shown.

<sup>2</sup>Harmonized Tariff Schedule of the United States (HTS) code 2603.00.0010. Includes copper ore and concentrates only; excludes copper contained in ore and concentrates of other metals.

<sup>3</sup>HTS codes 2620.30.0010 and 7401.00.0000. Includes copper matte, ash, and precipitates only; excludes the copper content of mattes and ashes of other metals.

<sup>4</sup>HTS code 7402.00.0000.

<sup>5</sup>HTS codes 7403.11.0000, 7403.12.0000, 7403.13.0000, and 7403.19.0000.

<sup>6</sup>Less than ½ unit.

Source: U.S. Census Bureau.

TABLE 14  
U.S. EXPORTS OF COPPER (UNMANUFACTURED), BY CLASS<sup>1</sup>

(Metric tons, copper content)

Country or locality	Ore and concentrates <sup>2</sup>			Matte, ash, and precipitates <sup>3</sup>			Blister and anodes <sup>4</sup>			Refined <sup>5</sup>		
	2021			2021			2021			2021		
	2020	March	January-- March	2020	March	January-- March	2020	March	January-- March	2020	March	January-- March
Belgium	230	--	58	6,110	372	1,080	190	348	377	64	--	--
Bulgaria	4,350	--	--	(6)	--	--	--	--	--	--	--	--
Canada	36,100	4,080	9,850	13,100	1,330	5,170	1,690	108	447	12,600	1,970	3,960
China	49,300	6,550	14,200	62	20	43	148	--	--	233	195	978
Germany	--	1	1	288	28	133	128	21	41	22	--	20
Hong Kong	9	2	2	--	--	--	86	--	33	18	--	--
India	20	--	--	37	29	29	247	31	73	--	--	--
Italy	--	--	--	--	--	--	197	1	26	86	2	2
Japan	14,600	--	--	251	39	232	24	1	1	4	5	5
Korea, Republic of	8,140	22	2,340	1	40	81	1,390	83	448	1,160	5	13
Malaysia	--	--	--	3	--	--	218	20	40	--	--	--
Mexico	250,000	32,200	81,100	2,720	--	24	848	4	30	26,800	1,050	5,510
Philippines	6,250	--	--	--	(6)	(6)	10	10	10	--	--	--
Singapore	--	--	--	256	--	--	36	--	10	13	1	7
Slovakia	--	--	--	1,050	59	275	--	--	--	--	--	--
Spain	8,990	--	--	1,820	218	354	35	--	--	--	--	--
Sweden	--	--	--	--	--	--	135	72	72	--	--	--
Thailand	--	--	--	2	--	--	256	11	11	(6)	--	--
Other	4,630	857	899	172	90	129	565	88	158	164	134	188
Total	383,000	43,700	108,000	25,900	2,220	7,550	6,200	798	1,780	41,200	3,360	10,700

-- Zero.

<sup>1</sup>Data are rounded to no more than three significant digits; may not add to totals shown.

<sup>2</sup>Schedule B of the United States code 2603.00.0010. Includes copper ore and concentrates only; excludes copper contained in ore and concentrates of other metals.

<sup>3</sup>Schedule B codes 2620.30.0000, 7401.00.0010, and 7401.00.0050. Includes copper matte, ash, and precipitates only; excludes the copper content of mattes and ashes of other metals.

<sup>4</sup>Schedule B code 7402.00.0000.

<sup>5</sup>Schedule B codes 7403.11.0000, 7403.12.0000, 7403.13.0000, and 7403.19.0000.

<sup>6</sup>Less than ½ unit.

Source: U.S. Census Bureau.



TABLE 15  
U.S. IMPORTS FOR CONSUMPTION OF COPPER SCRAP<sup>1</sup>

(Metric tons, gross weight)

Country or locality	Unalloyed <sup>2</sup>			Alloyed <sup>3</sup>		
	2021			2021		
	2020	March	January– March	2020	March	January– March
Antigua and Barbuda	--	--	--	151	--	27
Bahamas	--	--	--	681	46	188
Brazil	--	--	--	164	--	37
Canada	14,500	1,680	3,830	41,300	4,160	11,900
Cayman Islands	4	--	--	262	26	73
Colombia	60	--	--	808	58	173
Costa Rica	619	90	208	934	217	477
Dominican Republic	876	107	303	1,150	197	521
Ecuador	--	--	--	154	20	39
El Salvador	--	--	--	294	33	193
Germany	179	15	47	108	9	53
Guatemala	--	--	--	289	113	162
Honduras	54	15	29	844	115	263
Jamaica	--	--	4	258	--	54
Mexico	9,450	992	2,650	37,100	4,240	10,900
Nicaragua	114	--	--	--	--	--
Panama	714	81	189	335	52	97
Peru	495	--	--	251	39	99
Vietnam	121	21	35	22	3	5
Other	362	(4)	80	1,400	228	576
Total	27,600	3,000	7,370	86,500	9,550	25,800

-- Zero.

<sup>1</sup>Data are rounded to no more than three significant digits; may not add to totals shown.

<sup>2</sup>Harmonized Tariff Schedule of the United States (HTS) codes 7404.00.3020 and 7404.00.6020.

<sup>3</sup>HTS codes 7404.00.3045, 7404.00.3055, 7404.00.3065, 7404.00.3090, 7404.00.6045, 7404.00.6055, 7404.00.6065, and 7404.00.6090.

<sup>4</sup>Less than ½ unit.

Source: U.S. Census Bureau.

TABLE 16  
U.S. EXPORTS OF COPPER SCRAP<sup>1</sup>

(Metric tons, gross weight)

Country or locality	Unalloyed <sup>2</sup>						Alloyed <sup>3</sup>					
	2021						2021					
	2020	No. 1		No. 2		Other		2020	Segregated		Unsegregated	
		March	January– March	March	January– March	March	January– March		March	January– March	March	January– March
Austria	3,970	--	--	197	563	--	--	1,010	--	--	--	--
Belgium	20,900	598	1,300	691	1,670	302	1,070	11,100	117	391	638	1,560
Canada	51,800	--	--	--	--	5,170	14,000	32,200	--	--	3,970	11,700
China	81,200	2,920	7,740	3,170	9,170	7,850	20,000	35,400	1,230	3,470	1,520	5,580
Germany	22,400	1,590	3,170	161	984	284	826	16,000	78	242	805	2,820
Greece	13,000	604	2,020	292	631	274	1,180	1,450	19	58	96	318
Hong Kong	7,810	212	647	546	1,390	978	1,540	7,750	455	628	622	1,000
India	9,570	230	614	103	263	288	689	34,800	837	3,110	1,750	4,200
Japan	16,400	282	720	1,070	2,610	92	369	13,800	60	295	554	1,670
Korea, Republic of	45,700	2,440	5,560	1,500	3,900	1,300	3,630	18,500	625	1,140	1,020	2,810
Malaysia	54,400	452	1,720	1,570	4,310	5,440	13,400	122,000	2,020	6,970	6,250	20,000
Pakistan	697	3	3	2	37	--	--	14,500	--	--	1,980	4,440
Poland	5,000	--	58	77	430	944	1,570	6,570	59	59	79	1,390
Russia	7,310	--	113	--	100	127	307	830	--	--	356	481
Spain	4,070	6	48	--	26	135	426	7,610	218	493	708	969
Taiwan	17,000	626	1,470	194	618	381	1,130	16,400	101	650	136	790
Thailand	4,800	83	208	98	155	363	1,200	20,900	194	515	3,160	6,490
Vietnam	7,480	38	94	97	99	196	196	2,340	--	37	--	62
Other	22,900	1,100	2,670	160	957	676	1,870	16,600	257	1,330	1,330	3,210
Total	396,000	11,200	28,200	9,920	27,900	24,800	63,500	380,000	6,270	19,400	25,000	69,400

-- Zero.

<sup>1</sup>Data are rounded to no more than three significant digits; may not add to totals shown.

<sup>2</sup>Schedule B of the United States codes 7404.00.0010 and 7404.00.0015 (no. 1), 7404.00.0025 (no. 2), and 7404.00.0030 (other).

<sup>3</sup>Schedule B codes for segregated alloyed copper scrap are 7404.00.0041, 7404.00.0046, 7404.00.0051, 7404.00.0056, 7404.00.0061, 7404.00.0066, and 7404.00.0075. Schedule B codes for unsegregated alloyed copper scrap are 7404.00.0085 and 7404.00.0095.

Source: U.S. Census Bureau.