

Mineral Industry Surveys

For information, contact:

Amy C. Tolcin, Zinc Commodity Specialist
 National Minerals Information Center
 U.S. Geological Survey
 989 National Center
 Reston, VA 20192
 Telephone: (703) 648-4940 Fax: (703) 648-7757
 Email: atolcin@usgs.gov

Hodan A. Fatah (Data)
 Telephone: (703) 648-4971
 Fax: (703) 648-7975
 Email: hfatah@usgs.gov

Internet: <https://www.usgs.gov/centers/nmic>

ZINC IN FEBRUARY 2021

Domestic mine production (recoverable) of zinc in February 2021 was 71,600 metric tons (t) (tables 1, 2). Average daily mine production in February was 2,560 t, 11% more than that in the previous month (revised) and 26% more than that in February 2020 (fig. 1).

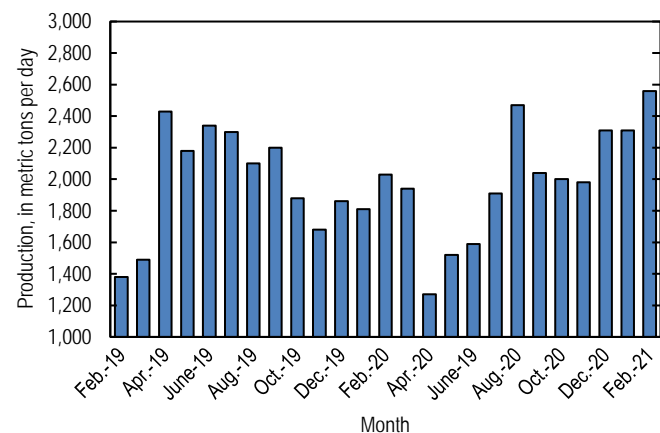


Figure 1. Average daily domestic zinc mine production (recoverable) from February 2019 through February 2021.

Stocks and Prices

Global London Metal Exchange Ltd. (LME) stocks of Special High Grade (SHG) zinc were 269,725 t at the end of February 2021, 8% less than stocks at the end of the previous month but six times more than stocks at the end of February 2020 (fig. 2, table 8). Reported off-warrant stocks of SHG zinc in LME-approved warehouses at the end of February 2021 increased to 87,440 t from 65,440 t at the end of January 2021 (London Metal Exchange Ltd., 2021a, b).

The monthly average S&P Global Platts Metals Week North American SHG zinc price in February 2021 was \$1.32 per pound, slightly more than that in the previous month and 26%

more than that in February 2020. The February 2021 average LME cash price for SHG zinc was \$2,743.20 per metric ton (\$1.24 per pound), slightly more than that in the previous month and 29% more than that in February 2020 (fig. 3, table 7).

The North American premium to the LME cash price in February 2021 averaged 7.7 cents per pound, unchanged from that in the previous month but 9% less than that in February 2020 (fig. 3, table 7).

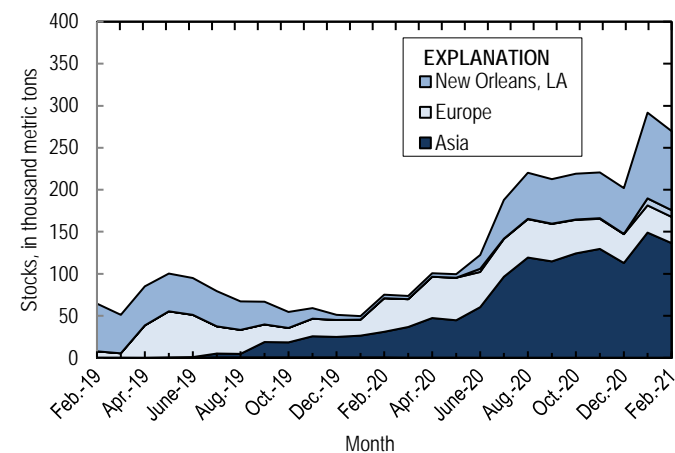


Figure 2. Global LME stocks of Special High Grade zinc, monthend, from February 2019 through February 2021. Source: London Metal Exchange Ltd.

References Cited

- London Metal Exchange Ltd., 2021a, Off warrant stock reporting February 2021: London, United Kingdom, London Metal Exchange Ltd. (Accessed April 27, 2021, via <https://www.lme.com/en-GB/Market-Data/Reports-and-data/Warehouse-and-stocks-reports/Off-warrant-stock-reporting>.)
- London Metal Exchange Ltd., 2021b, Off warrant stock reporting January 2021: London, United Kingdom, London Metal Exchange Ltd. (Accessed March 30, 2021, via <https://www.lme.com/en-GB/Market-Data/Reports-and-data/Warehouse-and-stocks-reports/Off-warrant-stock-reporting>.)

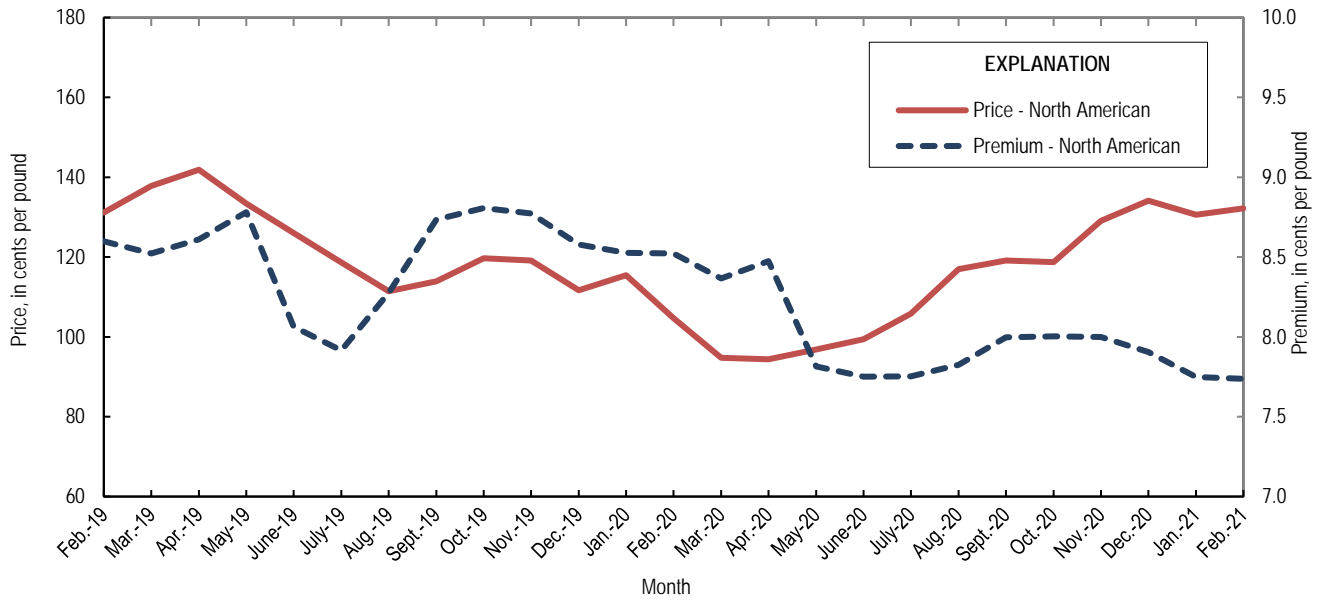


Figure 3. Average monthly North American price and premium for Special High Grade zinc from February 2019 through February 2021. Source: S&P Global Platts Metals Week.

List services and web feed subscribers are the first to receive notification of USGS minerals information publications and data releases. For information on how to subscribe, go to <https://www.usgs.gov/centers/nmic/minerals-information-publication-list-services>.

TABLE 1
SALIENT ZINC STATISTICS¹

(Metric tons, unless otherwise specified)

	2020	2021		
	January– December ^p	January	February	January– February ²
Production:				
Mine, zinc content of concentrate ³	718,000	73,800 ^r	73,700	147,000
Mine, recoverable zinc ³	697,000	71,600 ^r	71,600	143,000
Smelter, refined zinc ^e	180,000	18,000	18,000	36,000
Consumption of refined zinc, apparent ⁴	878,000	75,200	73,500	149,000
Imports for consumption:				
Ore and concentrate (zinc content)	3,170	6,010	74	6,090
Refined zinc	700,000	57,500	55,800	113,000
Exports:				
Ore and concentrate (zinc content)	549,000	12,400	18,700	31,100
Refined zinc	2,480	261	242	503
Price:⁵				
London Metal Exchange cash, average, dollars per metric ton	2,264.42	2,707.70	2,743.20	2,725.45
North American, ⁶ average, cents per pound	110.79	130.57	132.17	131.37

^eEstimated. ^pPreliminary. ^rRevised.

¹Data are rounded to no more than three significant digits, except prices; may not add to totals shown.

²May include revisions to previously published data.

³Reported zinc content in both zinc and lead concentrates.

⁴Smelter production plus imports for consumption minus domestic exports.

⁵Special High Grade Zinc.

⁶S&P Global Platts Metals Week.

TABLE 2
MINE AND SMELTER PRODUCTION OF ZINC
IN THE UNITED STATES¹

(Metric tons)

Period	Mine ²		Smelter ^c
	Zinc content	Recoverable	
2020:			
February	60,600	58,800	10,000
March	61,900	60,100	12,000
April	39,300	38,200	14,000
May	48,500	47,000	15,000
June	49,100	47,600	15,000
July	61,100	59,400	16,000
August	78,800	76,400	16,000
September	62,900	61,100	16,000
October	63,900	62,000	18,000
November	61,100	59,300	18,000
December	73,600	71,500	18,000
January–December	718,000	697,000	180,000
2021:			
January	73,800 ^r	71,600 ^r	18,000
February	73,700	71,600	18,000
January–February	147,000	143,000	36,000

^cEstimated. ^rRevised.

¹Data are rounded to no more than three significant digits; may not add to totals shown.

²Includes the zinc content in both lead and zinc concentrates.

TABLE 3
U.S. IMPORTS FOR CONSUMPTION OF ZINC¹

(Gross weight, unless otherwise specified)

Material	2020		2021			
	Quantity (metric tons)	Value (thousands)	February		January–February ²	
			Quantity (metric tons)	Value (thousands)	Quantity (metric tons)	Value (thousands)
Ore and concentrate (zinc content)	3,170	\$4,410	74	\$35	6,090	\$5,410
Unwrought:						
Refined zinc	700,000	1,600,000	55,800	156,000	113,000	312,000
Zinc alloys	1,370	3,680	384	1,090	1,050	2,810
Wrought:						
Bars, rods, profiles, wire	3,260	10,200	380	1,370	637	2,280
Plates, sheets, strip, foil	2,570	11,500	105	428	194	840
Ash and residues:						
Zinc dross and skimmings	3,800	5,680	331	643	634	1,230
Other (zinc content)	1,130	717	178	111	466	289
Other:						
Powders, flakes, dust	24,600	83,700	1,850	6,980	4,280	16,100
Waste and scrap	11,400	15,800	858	1,680	1,620	2,980
Chemicals:						
Lithopone	1,150	4,200	130	554	227	977
Zinc oxide	102,000	252,000	9,010	22,800	18,100	45,800
Zinc chloride	275	1,640	5	50	15	147
Zinc sulfate	92,600	70,900	6,490	5,790	13,900	12,300
Zinc sulfide	964	4,720	86	322	207	935

¹Data are rounded to no more than three significant digits.

²May include revisions to previously published data.

Source: U.S. Census Bureau.

TABLE 4
U.S. IMPORTS OF ZINC, BY TYPE OF MATERIAL AND COUNTRY OR LOCALITY¹

(Metric tons, gross weight, unless otherwise specified)

Material and country or locality	General imports			Imports for consumption		
	2020	2021		2020	2021	
		February	January–February ²		February	January–February ²
Ore and concentrate (zinc content):						
Canada	--	15	15	--	15	15
China	1,060	59	59	1,060	59	59
Mexico	(3)	--	394	(3)	--	394
Peru	2,100	--	5,620	2,100	--	5,620
Total	3,170	74	6,090	3,170	74	6,090
Refined zinc:						
Australia	33,000	--	--	2,000	--	1,500
Belgium	24,100	--	--	1	--	--
Brazil	21,900	--	--	13,400	--	--
Canada	489,000	39,000	76,500	489,000	39,000	76,500
China	108	--	(3)	108	--	(3)
Germany	--	818	820	--	818	820
Korea, Republic of	39,100	5,050	9,110	21,100	5,050	9,140
Mexico	130,000	6,980	18,100	130,000	6,980	18,100
Netherlands	1,470	--	--	--	--	--
Peru	44,400	1,210	4,570	44,400	1,210	4,570
Poland	100	--	--	100	--	--
Spain	20,000	--	--	123	2,670	2,670
Taiwan	24	--	--	24	--	--
Other	(3)	--	(3)	(3)	--	(3)
Total	803,000	53,100	109,000	700,000	55,800	113,000
Oxide:						
Australia	538	36	43	538	36	43
Canada	42,600	3,700	7,500	42,600	3,700	7,500
China	175	16	42	175	16	42
Germany	1,160	109	281	1,160	109	281
Greece	798	--	80	798	--	80
Japan	868	63	93	868	63	93
Mexico	43,100	3,790	7,630	43,100	3,790	7,630
Netherlands	9,030	768	1,420	9,030	768	1,420
Peru	3,850	516	918	3,850	516	918
Other	254	14	62	254	14	62
Total	102,000	9,010	18,100	102,000	9,010	18,100

-- Zero.

¹Data are rounded to no more than three significant digits; may not add to totals shown.

²May include revisions to previously published data.

³Less than ½ unit.

Source: U.S. Census Bureau.

TABLE 5
U.S. EXPORTS OF ZINC¹

(Gross weight, unless otherwise specified)

Material	2020		2021			
	Quantity (metric tons)	Value (thousands)	February		January–February ²	
			Quantity (metric tons)	Value (thousands)	Quantity (metric tons)	Value (thousands)
Ore and concentrate (zinc content)	549,000	\$806,000	18,700	\$26,400	31,100	\$51,200
Unwrought:						
Refined zinc	2,480	6,810	242	773	503	1,630
Zinc alloys	19,900	54,000	1,750	5,380	3,610	11,100
Wrought:						
Bars, rods, profiles, wire	9,500	28,900	854	3,090	1,750	5,660
Plates, sheets, strip, foil	5,460	20,300	518	2,140	1,290	4,940
Ash and residues:						
Hard zinc spelter	9,150	12,300	1,150	2,230	2,140	3,900
Other (zinc content)	23,000	30,700	1,950	2,940	3,780	5,700
Other:						
Powders, flakes, dust	13,600	49,500	849	2,830	1,500	5,160
Waste and scrap	25,000	29,600	3,000	3,850	5,510	7,360
Chemicals:						
Lithopone	522	1,900	47	210	85	417
Zinc oxide	44,900	56,000	5,740	7,710	11,300	15,600
Zinc chloride	419	747	25	25	29	43
Zinc sulfate	507	507	6	10	100	76
Zinc sulfide	1,420	13,000	232	1,510	565	3,210

¹Data are rounded to no more than three significant digits.

²May include revisions to previously published data.

Source: U.S. Census Bureau.

TABLE 6
U.S. EXPORTS OF ZINC, BY TYPE OF MATERIAL AND COUNTRY OR LOCALITY¹

(Metric tons, gross weight, unless otherwise specified)

Material and country or locality	2020	2021	
		February	January-February ²
Ore and concentrate (zinc content):			
Australia	63,300	--	--
Belgium	40,000	--	--
Canada	287,000	3,980	9,030
Finland	15,700	--	--
Germany	21,100	--	--
Italy	5,290	--	--
Japan	38,500	--	1,020
Korea, Republic of	59,200	2,430	8,790
Peru	120	--	--
Spain	18,400	12,300	12,300
Other	31	4	8
Total	549,000	18,700	31,100
Refined zinc:			
Canada	962	15	193
India	297	--	--
Mexico	833	225	307
Vietnam	164	--	--
Other	223 [†]	1	3
Total	2,480	242	503
Oxide:			
Australia	503	--	--
Canada	3,290	369	597
India	385	121	126
Mexico	38,500	5,130	10,300
Other	2,190	120	257
Total	44,900	5,740	11,300

[†]Revised. -- Zero.

¹Data are rounded to no more than three significant digits; may not add to totals shown.

²May include revisions to previously published data.

³Less than ½ unit.

Source: U.S. Census Bureau.

TABLE 7
AVERAGE PRICES FOR SPECIAL HIGH GRADE ZINC

Period	North American		London Metal Exchange	
	Premium	Price ¹	cash ²	
	¢/lb.	¢/lb.	¢/lb.	\$/t
2020:				
February	8.5	104.68	96.16	2,119.90
March	8.4	94.79	86.42	1,905.33
April	8.5	94.39	85.91	1,894.08
May	7.8	96.87	89.06	1,963.40
June	7.8	99.40	91.65	2,020.61
July	7.8	105.83	98.08	2,162.24
August	7.8	117.00	109.17	2,406.83
September	8.0	119.15	111.15	2,450.50
October	8.0	118.75	110.75	2,441.55
November	8.0	129.10	121.10	2,669.69
December	7.9	134.11	126.21	2,782.36
January–December	8.1	110.79	102.71	2,264.42
2021:				
January	7.7	130.57	122.82	2,707.70
February	7.7	132.17	124.43	2,743.20
January–February	7.7	131.37	123.62	2,725.45

¹S&P Global Platts Metals Week North American price. Based on the London Metal Exchange cash price plus the North American premium.

²Average of the cash buyer price and the cash seller and settlement price.

Source: S&P Global Platts Metals Week.

TABLE 8
LONDON METAL EXCHANGE (LME) STOCKS OF SPECIAL HIGH GRADE ZINC, END OF PERIOD

(Metric tons)

Period	United States			Asia	Europe	Other	Total LME
	Baltimore, MD	New Orleans, LA	Total				
2020:							
February	--	4,100	4,100	25,950	40,000	350	44,450
March	--	4,000	4,000	30,750	32,950	200	37,150
April	--	4,200	4,200	36,650	49,225	100	53,425
May	--	4,175	4,175	44,700	50,675	25	99,575
June	3,825	16,675	20,500	60,425	41,625	--	122,550
July	475	46,075	46,550	96,525	44,900	--	187,975
August	475	54,650	55,125	119,300	45,700	--	220,125
September	475	52,950	53,425	114,575	44,575	--	212,575
October	475	54,500	54,975	124,200	40,025	--	219,200
November	475	54,500	54,975	129,700	35,825	--	220,500
December	475	54,500	54,975	113,025	34,075	--	202,075
2021:							
January	8,150	102,150	110,300	149,000	32,450	--	291,750
February	8,150	93,850	102,000	136,325	31,400	--	269,725

-- Zero.

Source: London Metal Exchange, Ltd.