

Mineral Industry Surveys

For information, contact:

Daniel M. Flanagan, Copper Commodity Specialist
 National Minerals Information Center
 U.S. Geological Survey
 989 National Center
 Reston, VA 20192
 Telephone: (703) 648-7726, Fax: (703) 648-7757
 Email: dflanagan@usgs.gov

Sheema Merchant (Data)
 Telephone: (703) 659-9944
 Fax: (703) 648-7975
 Email: smerchant@usgs.gov

Internet: <https://www.usgs.gov/centers/nmic>

COPPER IN FEBRUARY 2021

In February 2021, domestic mine production of recoverable copper was 97,200 metric tons (t). The average daily mine production was 3,470 t, an increase of 10% from that in January and 7% greater than that in February 2020 (fig. 1). Year-to-date recoverable mine output was 195,000 t, a slight increase compared with that through February 2020 (table 2).

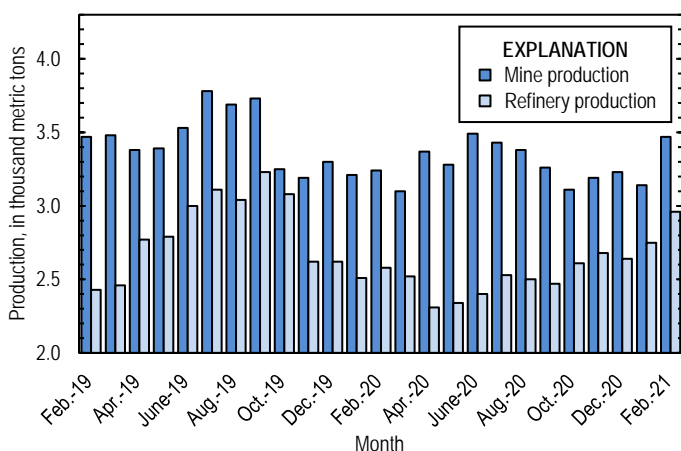


Figure 1. Average daily U.S. copper mine (recoverable) and refinery (primary and secondary) production from February 2019 through February 2021. Refinery production in November and December 2019 were withheld to avoid disclosing company proprietary data; the values shown reflect the daily average for cumulative production over this period rather than production in each month.

Owing to temporary closures of ASARCO LLC's smelter in Arizona and electrolytic refinery in Texas, smelter and electrolytic refinery production reported to the U.S. Geological Survey in February 2021 were withheld to avoid disclosing company proprietary data. Smelter and electrolytic refinery output in tables 3 and 4 are estimates based on information in quarterly company reports. The facilities shut down in October 2019 because of a worker strike, which reportedly ended in July 2020 (Wichner, 2021). As of February 2021, ASARCO had not announced when operations were expected to resume or a reason for the continued closures.

Estimated U.S. smelter production was 35,000 t in February 2021. Year-to-date estimated smelter production was 70,000 t, 17% higher than that through February 2020 (table 3).

Total refinery production in the United States was 82,900 t in February 2021; data for electrolytic and electrowon output, as well as refined production from scrap, are reported in table 4. Average daily total refinery production was 2,960 t, an increase of 8% from that in January and 15% more than that in February 2020 (fig. 1). Year-to-date refinery output was 168,000 t, an increase of 10% relative to the same period in 2020 (table 4).

Prices

In February 2021, the COMEX spot copper price rose for the tenth consecutive month and averaged \$3.86 per pound, an increase of 7% from \$3.62 per pound in January and 49% higher than \$2.58 per pound in February 2020 (fig. 2, table 11). The average U.S. dealers buying price of number 2 copper scrap in February 2021 was \$2.70 per pound, a slight increase compared with \$2.67 per pound in January and 46% greater than \$1.85 per pound in February 2020 (fig. 2, table 12).

Stocks

Refined copper stocks in the United States totaled 109,000 t at the end of February 2021, a slight decrease from those in January and slightly higher than those in February 2020. COMEX stocks fell by 3,840 t (6%), and London Metal Exchange Ltd. stocks in U.S. warehouses declined by 3,630 t (22%) from those at the end of January (fig. 3, table 10).

Industry News

United States.—Nevada Copper Corp. announced that output of copper in concentrates at the Pumpkin Hollow Mine in Nevada would be significantly lower than anticipated during the first half of 2021 owing to mechanical issues and delays in completing necessary system upgrades. Mining operations at the underground portion of Pumpkin Hollow began in December 2019, were suspended in April 2020 because of restrictions implemented by the State of Nevada in response to the

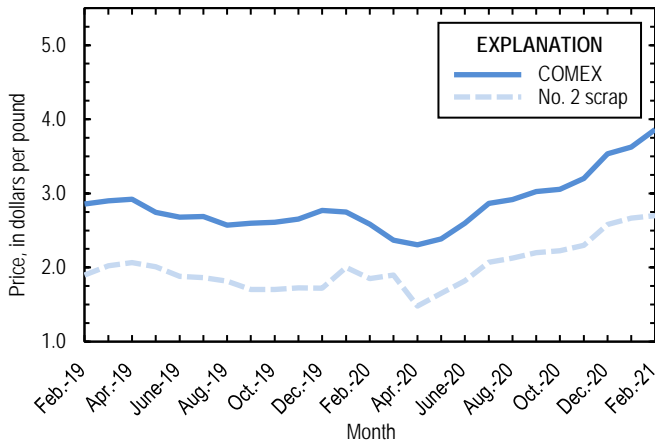


Figure 2. Monthly average COMEX copper price and no. 2 copper scrap dealers buying price from February 2019 through February 2021. As of January 2020, no. 2 prices were available only for the entire United States, whereas no. 2 prices were available only for individual domestic markets prior to January 2020. Prices shown prior to January 2020 are for New York dealers no. 2 scrap. Sources: Fastmarkets-AMM and S&P Global Platts Metals Week.

COVID-19 pandemic, and restarted in August 2020. Nevada Copper expected the underground mine to reach steady production in the third quarter of 2021 and to produce an annual average of approximately 23,000 t of copper over a mine life of nearly 14 years, with the potential for additional future production from an open pit (Nevada Copper Corp., 2019, p. 11, 17; 2021).

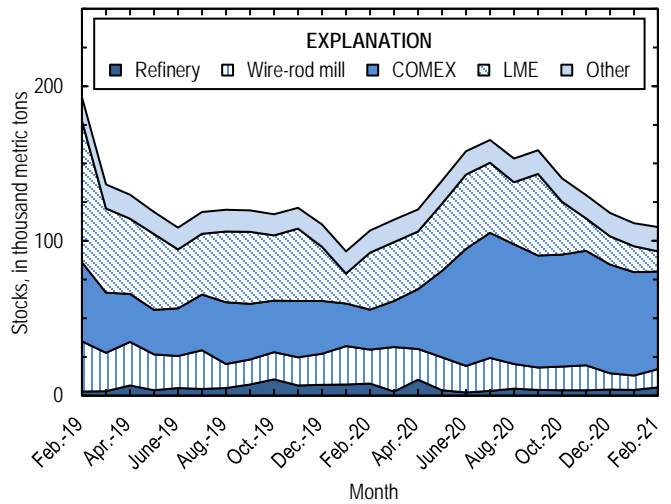


Figure 3. Monthly domestic refined copper stocks, by type, from February 2019 through February 2021. Sources: Fastmarkets-AMM, London Metal Exchange Ltd., and U.S. Geological Survey.

References Cited

- Nevada Copper Corp., 2019, Producing US copper Q4, 2019: Yerington, NV, Nevada Copper Corp. corporate presentation, April 17, 30 p. (Accessed April 29, 2019, via <https://nevadacopper.com/investors/presentations/>.)
- Nevada Copper Corp., 2021, Nevada Copper provides corporate and operations update: Yerington, NV, Nevada Copper Corp. news release, February 19, [4] p. (Accessed August 12, 2021, at <https://nevadacopper.com/site/assets/files/4208/2021-02-19-ncu-nr.pdf>.)
- Wichner, David, 2021, Tucson-based Asarco facing new charges over post-strike labor practices: Arizona Daily Star [Tucson, AZ], April 26. (Accessed May 14, 2021, at https://tucson.com/business/tucson-based-asarco-facing-new-charges-over-post-strike-labor-practices/article_ea8fb10c-a468-11eb-9063-3b0056bca30b.html.)

List services and web feed subscribers are the first to receive notification of USGS minerals information publications and data releases. For information on how to subscribe, go to <https://www.usgs.gov/centers/nmic>.

TABLE 1
SALIENT STATISTICS OF THE COPPER INDUSTRY IN THE UNITED STATES¹

(Metric tons of copper content, unless otherwise specified)

	Source table ²	2020 ^p	2021		
			January	February	January– February
Production:					
Primary:					
Mine, recoverable	(2)	1,200,000	97,500	97,200	195,000
Smelter	(3)	315,000 ^e	35,000 ^e	35,000 ^e	70,000 ^e
Refinery:					
Electrolytic, domestic and foreign	(4)	315,000 ^e	35,000 ^e	35,000 ^e	70,000 ^e
Electrowon	(4)	559,000	47,100	43,900	90,900
Total	(4)	874,000	82,100	78,900	161,000
Secondary recoverable copper:³					
Refineries	(5)	43,200	3,220	4,060	7,270
Ingot makers ⁴	(5)	57,900	4,820	4,820	9,650
Brass and wire-rod mills	(5)	670,000	57,800	55,200	113,000
Foundries, etc. ⁴	(5)	36,700	3,060	3,060	6,120
Consumption:					
Apparent, primary refined and copper from old scrap	(8)	1,660,000	140,000	165,000	305,000
Reported, refined copper	(7)	1,710,000	134,000	137,000	270,000
Purchased copper-base scrap (gross weight)	(9)	938,000	85,900	81,800	168,000
Stocks at end of period:					
Total refined	(10)	118,000	111,000	109,000	109,000
Blister and anode	(10)	9,380	8,800	23,800	23,800
Price, U.S. producers cathode (cents per pound) ⁵	(11)	286.745	369.318	393.314	381.316
Imports:⁶					
Ore and concentrates	(13)	2,170	88	2,840	2,930
Refined	(13)	676,000	42,400	73,000	115,000
Exports:⁶					
Ore and concentrates	(14)	383,000	37,300	27,400	64,700
Refined	(14)	41,200	4,350	2,970	7,320

^eEstimated. ^pPreliminary.

¹Data are rounded to no more than three significant digits, except prices; may not add to totals shown.

²Numbers in parentheses refer to the tables where these data are located.

³Copper recovered from copper-base scrap only.

⁴Estimated based on the monthly average of 2018 annual data.

⁵Source: S&P Global Platts Metals Week.

⁶Source: U.S. Census Bureau.

TABLE 2
MINE PRODUCTION OF RECOVERABLE COPPER IN THE UNITED STATES¹

(Metric tons)

Period	Recoverable copper			Contained copper		
	Arizona	Others ²	Total	Electrowon	Concentrates ³	Total
2020: ^P						
January–February	136,000	57,400	194,000	85,600	112,000	198,000
February	65,400	28,600	94,000	41,000	55,100	96,100
March	67,600	28,400	96,000	44,900	53,100	98,000
April	76,400	24,700	101,000	44,600	58,800	103,000
May	75,500	26,200	102,000	48,200	55,700	104,000
June	77,800	26,800	105,000	48,300	58,600	107,000
July	79,500	26,700	106,000	49,600	58,900	109,000
August	78,900	25,900	105,000	49,100	57,900	107,000
September	72,600	25,300	97,900	45,700	54,300	100,000
October	71,000	25,500	96,500	47,600	50,800	98,500
November	69,900	25,800	95,700	47,100	50,600	97,700
December	75,000	25,100	100,000	48,400	53,800	102,000
January–December	880,000	318,000	1,200,000	559,000	665,000	1,220,000
2021:						
January	71,600	25,900	97,500	47,100	52,500	99,600
February	70,500	26,700	97,200	43,900	55,400	99,300
January–February	142,000	52,600	195,000	90,900	108,000	199,000

^PPreliminary.

¹Data are rounded to no more than three significant digits; may not add to totals shown.

²Includes production from Michigan, Missouri, Montana, Nevada, New Mexico, and Utah.

³Includes copper content of precipitates and other metal concentrates.

TABLE 3
COPPER PRODUCED AT SMELTERS IN
THE UNITED STATES^{1,2}

(Metric tons, copper content)

Period	Anode production ^{e, 3}
2020: ^p	
January–February	60,000
February	30,000
March	30,000
April	20,000
May	20,000
June	20,000
July	25,000
August	25,000
September	25,000
October	30,000
November	30,000
December	30,000
January–December	315,000
2021:	
January	35,000
February	35,000
January–February	70,000

^eEstimated. ^pPreliminary.

¹Data are rounded to no more than three significant digits; may not add to totals shown.

²Includes blister and copper anode from primary or secondary sources.

³To avoid disclosing company proprietary data, monthly smelter production data are estimates based on information in quarterly public company reports and do not reflect actual production reported to the U.S. Geological Survey.

TABLE 4
U.S. PRODUCTION OF REFINED COPPER, BY SOURCE AND METHOD OF RECOVERY¹

(Metric tons)

Period	Primary materials			Scrap	Total refined
	Electrolytically refined ^{e, 2, 3}	Electrowon	Total		
2020: ^P					
January–February	60,000	85,600	146,000	7,080	153,000
February	30,000	41,000	71,000	3,820	74,800
March	30,000	44,900	74,900	3,220	78,100
April	20,000	44,600	64,600	4,530	69,100
May	20,000	48,200	68,200	4,380	72,600
June	20,000	48,300	68,300	3,620	71,900
July	25,000	49,600	74,600	3,720	78,400
August	25,000	49,100	74,100	3,380	77,500
September	25,000	45,700	70,700	3,490	74,200
October	30,000	47,600	77,600	3,220	80,900
November	30,000	47,100	77,100	3,290	80,400
December	30,000	48,400	78,400	3,300	81,700
January–December	315,000	559,000	874,000	43,200	918,000
2021:					
January	35,000	47,100	82,100	3,220	85,300
February	35,000	43,900	78,900	4,060	82,900
January–February	70,000	90,900	161,000	7,270	168,000

^eEstimated. ^PPreliminary.

¹Data are rounded to no more than three significant digits; may not add to totals shown.

²From domestic and foreign source materials.

³To avoid disclosing company proprietary data, monthly electrolytically refined production data are estimates based on information in quarterly public company reports and do not reflect actual production reported to the U.S. Geological Survey.

TABLE 5
COPPER RECOVERABLE IN UNALLOYED AND ALLOYED FORM FROM PURCHASED COPPER-BASE SCRAP
IN THE UNITED STATES¹

(Metric tons, copper content)

Period	Refineries ²		Ingot makers ³		Brass and wire-rod mills		Foundries, etc. ³		Total ⁴
	New scrap ^e	Old scrap	New scrap	Old scrap	New scrap	Old scrap	New scrap	Old scrap	
2020: ^p									
January–February	3,350	3,730	1,540	8,110	106,000	7,340	4,290	1,830	136,000
February	1,680	2,140	768	4,060	52,400	3,580	2,150	913	67,700
March	1,680	1,540	768	4,060	52,100	3,370	2,150	913	66,600
April	1,680	2,850	768	4,060	51,800	2,950	2,150	913	67,100
May	1,680	2,700	768	4,060	51,300	2,600	2,150	913	66,200
June	1,680	1,940	768	4,060	51,700	3,030	2,150	913	66,300
July	1,680	2,040	768	4,060	53,400	3,290	2,150	913	68,300
August	1,680	1,700	768	4,060	52,200	3,120	2,150	913	66,600
September	1,680	1,810	768	4,060	50,700	3,300	2,150	913	65,400
October	1,680	1,540	768	4,060	53,600	3,540	2,150	913	68,300
November	1,680	1,620	768	4,060	52,900	3,000	2,150	913	67,100
December	1,680	1,620	768	4,060	55,800	2,590	2,150	913	69,600
January–December	20,100	23,100	9,220	48,700	631,000	38,100	25,800	11,000	807,000
2021:									
January	1,680	1,540	768	4,060	53,700	4,110	2,150	913	68,900
February	1,680	2,380	768	4,060	51,700	3,500	2,150	913	67,100
January–February	3,350	3,920	1,540	8,110	105,000	7,610	4,290	1,830	136,000

^eEstimated. ^pPreliminary.

¹Data are rounded to no more than three significant digits; may not add to totals shown.

²Electrolytically refined and fire refined from scrap based on source of material at smelter or refinery level.

³Monthly data estimated based on the monthly average of 2018 annual data.

⁴Does not include an estimate, based on reported 2018 annual data, of 3,380 tons per month from new scrap and 2,710 tons per month from old scrap of copper recovered from scrap other than copper-base.

TABLE 6
U.S. PRODUCTION, SHIPMENTS, AND STOCKS OF BRASS AND WIRE-ROD SEMIFABRICATES¹

(Metric tons, gross weight)

Period	Production		Shipments		Stocks, end of period	
	Brass mills	Wire-rod mills	Brass mills	Wire-rod mills	Brass mills	Wire-rod mills
2020: ^p						
January–February	148,000	219,000	148,000	212,000	29,700	31,800
February	73,900	110,000	73,600	106,000	29,700	31,800
March	74,500	108,000	74,100	112,000	30,100	27,800
April	72,500	94,600	73,500	96,200	29,000	26,100
May	73,400	95,300	73,400	91,400	29,000	30,000
June	73,700	89,400	73,600	96,100	29,200	23,400
July	73,500	108,000	73,300	104,000	29,300	27,000
August	73,700	104,000	73,600	111,000	29,400	20,000
September	73,800	107,000	73,700	108,000	29,500	18,600
October	74,400	108,000	74,900	110,000	29,000	16,400
November	73,600	106,000	73,600	106,000	29,000	16,000
December	73,700	101,000	74,000	97,800	28,700	19,000
January–December	884,000	1,240,000	885,000	1,240,000	28,700	19,000
2021:						
January	73,600	104,000	74,000	106,000	28,300	16,800
February	73,800	96,600	73,400	97,600	28,600	15,800
January–February	147,000	200,000	147,000	204,000	28,600	15,800

^pPreliminary.

¹Data are rounded to no more than three significant digits; may not add to totals shown.

TABLE 7
U.S. CONSUMPTION OF REFINED COPPER¹

(Metric tons)

Period	Brass mills	Wire-rod mills	Other plants ²	Total
2020:^p				
January–February	68,100	218,000	10,900	297,000
February	33,600	109,000	5,450	148,000
March	33,600	97,900	5,450	137,000
April	34,500	102,000	5,450	142,000
May	34,100	94,500	5,450	134,000
June	34,700	88,200	5,450	128,000
July	34,300	107,000	5,450	147,000
August	34,700	103,000	5,450	143,000
September	34,600	106,000	5,450	146,000
October	34,600	106,000	5,450	147,000
November	34,600	105,000	5,450	145,000
December	34,800	99,900	5,450	140,000
January–December	413,000	1,230,000	65,400	1,710,000
2021:				
January	34,700	93,400	5,450	134,000
February	34,900	96,100	5,450	137,000
January–February	69,600	190,000	10,900	270,000

^pPreliminary.

¹Data are rounded to no more than three significant digits; may not add to totals shown.

²Monthly consumption data by ingot makers, chemical plants, foundries, and miscellaneous manufacturers are estimated based on the monthly average of 2018 annual data.

TABLE 8
U.S. APPARENT CONSUMPTION OF COPPER¹

(Metric tons)

Period	Primary refined copper production	Copper in old scrap ²	Refined imports for consumption ³	Refined exports ³	Stock change during period	Apparent consumption
2020: ^p						
January–February	146,000	26,400	96,700	6,620	-3,890	266,000
February	71,000	13,400	34,400	2,460	13,400	103,000
March	74,900	12,600	69,800	3,730	6,860	147,000
April	64,600	13,500	74,900	1,550	6,790	145,000
May	68,200	13,000	66,200	540	18,600	128,000
June	68,300	12,700	63,300	1,220	18,900	124,000
July	74,600	13,000	37,300	5,300	7,430	112,000
August	74,100	12,500	59,800	6,470	-12,100	152,000
September	70,700	12,800	39,900	4,570	5,410	113,000
October	77,600	12,800	57,300	2,930	-18,100	163,000
November	77,100	12,300	53,300	3,090	-10,800	150,000
December	78,400	11,900	57,400	5,150	-11,700	154,000
January–December	874,000	153,000	676,000	41,200	7,370	1,660,000
2021:						
January	82,100	13,300	42,400	4,350	-6,490	140,000
February	78,900	13,600	73,000	2,970	-2,600	165,000
January–February	161,000	26,900	115,000	7,320	-9,090	305,000

^pPreliminary.

¹Data are rounded to no more than three significant digits; may not add to totals shown.

²Copper recovered from old scrap and converted to refined metal and alloys. Includes reported monthly production of copper from old scrap of copper-base, an estimate for annual reporters, and a monthly average of copper from non-copper-base materials based on 2018 annual data.

³Source: U.S. Census Bureau.

TABLE 9
U.S. CONSUMPTION OF PURCHASED COPPER-BASE SCRAP¹

(Metric tons, gross weight)

Period	Smelters and refineries		Ingot makers ²		Brass and wire-rod mills ³		Foundries, etc. ²		Total scrap used
	New scrap ^c	Old scrap	New scrap	Old scrap	New scrap	Old scrap	New scrap	Old scrap	
2020: ^p									
January–February	3,460	3,840	4,100	9,590	122,000	7,750	5,140	2,010	158,000
February	1,730	2,180	2,050	4,790	60,500	3,790	2,570	1,010	78,700
March	1,730	1,590	2,050	4,790	60,300	3,590	2,570	1,010	77,600
April	1,730	2,940	2,050	4,790	59,900	3,150	2,570	1,010	78,100
May	1,730	2,790	2,050	4,790	59,500	2,760	2,570	1,010	77,200
June	1,730	2,000	2,050	4,790	59,800	3,160	2,570	1,010	77,100
July	1,730	2,100	2,050	4,790	61,400	3,340	2,570	1,010	79,000
August	1,730	1,750	2,050	4,790	60,200	3,200	2,570	1,010	77,300
September	1,730	1,870	2,050	4,790	58,700	3,410	2,570	1,010	76,100
October	1,730	1,590	2,050	4,790	61,700	3,710	2,570	1,010	79,200
November	1,730	1,670	2,050	4,790	60,900	3,130	2,570	1,010	77,900
December	1,730	1,670	2,050	4,790	64,000	2,750	2,570	1,010	80,500
January–December	20,700	23,800	24,600	57,500	729,000	39,900	30,800	12,100	938,000
2021:									
January	1,730	1,590	2,050	4,790	68,000	4,190	2,570	1,010	85,900
February	1,730	2,460	2,050	4,790	63,600	3,580	2,570	1,010	81,800
January–February	3,460	4,040	4,100	9,590	132,000	7,770	5,140	2,010	168,000

^cEstimated. ^pPreliminary.

¹Data are rounded to no more than three significant digits; may not add to totals shown.

²Monthly data estimated based on the monthly average of 2018 annual data.

³Consumption at brass and wire-rod mills assumed equal to receipts.

TABLE 10
COPPER STOCKS IN THE UNITED STATES AT END OF PERIOD¹

(Metric tons)

Period	Blister and anode ²	Refined copper					LME ⁴	Total refined
		Refineries	Wire-rod mills	Brass mills	Other ³	Comex		
2020:^P								
February	17,900	7,810	21,900	7,250	7,070	26,000	36,700	107,000
March	7,940	2,750	28,600	7,290	7,070	29,800	38,100	114,000
April	7,430	10,300	19,900	7,210	7,070	38,700	37,200	120,000
May	11,900	3,550	21,200	7,730	7,070	55,900	43,500	139,000
June	11,000	2,070	17,200	7,900	7,070	75,600	48,000	158,000
July	11,300	3,090	21,200	7,770	7,070	81,000	45,200	165,000
August	15,700	4,490	15,900	8,210	7,070	77,400	40,200	153,000
September	13,500	3,730	14,500	8,200	7,070	72,400	52,700	159,000
October	15,200	3,460	15,300	8,170	7,070	72,500	34,000	140,000
November	12,500	3,420	16,200	8,100	7,070	74,000	20,900	130,000
December	9,380	3,850	10,700	7,850	7,070	70,200	18,300	118,000
2021:								
January	8,800	3,810	9,190	7,970	7,070	66,800	16,700	111,000
February	23,800	5,310	11,900	8,610	7,070	62,900	13,100	109,000

^PPreliminary.

¹Data are rounded to no more than three significant digits; may not add to totals shown.

²Copper content.

³Monthly estimates based on 2018 annual data, comprising stocks at ingot makers, chemical plants, foundries, and miscellaneous manufacturers.

⁴London Metal Exchange Ltd., U.S. warehouses.

TABLE 11
 AVERAGE PRICE OF COPPER IN THE UNITED STATES
 AND ON THE LONDON METAL EXCHANGE

(Cents per pound)

Period	U.S. producers cathode ¹	Comex first position ²	LME cash price Grade A
2020:			
February	265.695	258.382	257.907
March	243.464	236.714	234.886
April	236.881	230.631	228.985
May	245.090	238.715	237.402
June	266.305	259.805	260.470
July	293.300	286.600	288.202
August	298.377	291.752	294.685
September	309.052	302.302	304.470
October	312.495	305.695	304.033
November	327.338	320.338	320.392
December	360.470	353.470	351.772
Year	286.745	279.948	279.797
2021:			
January	369.318	362.318	361.536
February	393.314	386.126	383.750
January-February	381.316	374.222	372.643

¹Sum of "Comex high grade first position" and "NY dealer premium cathode."

²Listed as "Comex high grade first position."

Source: S&P Global Platts Metals Week.

TABLE 12
 AVERAGE BUYING PRICES FOR COPPER SCRAP IN THE UNITED STATES

(Cents per pound)

Period	Brass mills No. 1 scrap	Refiners No. 2 scrap	Dealers (United States)	
			No. 2 scrap	Red brass turnings and borings
2020:				
February	244.87	218.26	185.00	115.00
March	223.75	197.73	190.00	139.00
April	219.33	196.05	148.00	125.00
May	230.18	208.95	165.00	111.00
June	253.82	232.41	182.09	120.55
July	279.55	258.32	207.09	130.00
August	282.05	258.79	212.52	124.76
September	291.05	262.19	220.00	128.86
October	291.93	261.84	222.73	130.00
November	306.26	277.53	230.00	139.47
December	339.98	314.75	258.18	165.45
Year	268.76	243.47	201.72	130.67
2021:				
January	349.74	320.61	266.50	167.00
February	370.89	338.87	270.00	175.00
January–February	360.32	329.74	268.25	171.00

Source: Fastmarkets-AMM.

TABLE 13
U.S. IMPORTS FOR CONSUMPTION OF COPPER (UNMANUFACTURED), BY CLASS¹

(Metric tons, copper content)

Country or locality	Ore and concentrates ²			Matte, ash, and precipitates ³			Blister and anodes ⁴			Refined ⁵		
	2021			2021			2021			2021		
	2020	February	January–February	2020	February	January–February	2020	February	January–February	2020	February	January–February
Bahrain	--	--	--	--	--	--	--	--	--	76	--	--
Belgium	--	--	--	354	--	--	--	--	--	--	--	--
Bolivia	--	--	--	--	--	--	--	--	--	1,030	--	192
Canada	2,170	2,840	2,930	459	45	87	(6)	--	(6)	149,000	13,900	26,200
Chile	--	--	--	--	--	--	--	--	--	410,000	46,700	65,300
China	--	--	--	(6)	--	--	--	--	--	426	36	63
Congo (Kinshasa)	--	--	--	--	--	--	--	--	--	148	--	--
Finland	--	--	--	--	--	--	275	16	32	--	--	--
Germany	--	--	--	--	--	102	(6)	(6)	(6)	1,910	85	289
Japan	--	--	--	176	--	48	(6)	--	--	2,060	144	162
Korea, Republic of	--	--	--	--	--	--	(6)	--	--	72	10	10
Mexico	--	--	--	(6)	(6)	(6)	(6)	--	--	95,200	6,480	15,800
Peru	--	--	--	--	--	--	--	--	--	14,500	3,420	4,510
Spain	--	--	--	49	--	--	--	--	--	654	--	--
Other	--	--	--	22	--	--	5	1	1	50	2,300	2,990
Total	2,170	2,840	2,930	1,060	45	237	281	17	33	676,000	73,000	115,000

-- Zero.

¹Data are rounded to no more than three significant digits; may not add to totals shown.

²Harmonized Tariff Schedule of the United States (HTS) code 2603.00.0010. Includes copper ore and concentrates only; excludes copper contained in ore and concentrates of other metals.

³HTS codes 2620.30.0010 and 7401.00.0000. Includes copper matte, ash, and precipitates only; excludes the copper content of mattes and ashes of other metals.

⁴HTS code 7402.00.0000.

⁵HTS codes 7403.11.0000, 7403.12.0000, 7403.13.0000, and 7403.19.0000.

⁶Less than ½ unit.

Source: U.S. Census Bureau.

TABLE 14
U.S. EXPORTS OF COPPER (UNMANUFACTURED), BY CLASS¹

(Metric tons, copper content)

Country or locality	Ore and concentrates ²			Matte, ash, and precipitates ³			Blister and anodes ⁴			Refined ⁵		
	2021			2021			2021			2021		
	2020	February	January-- February	2020	February	January-- February	2020	February	January-- February	2020	February	January-- February
Belgium	230	32	58	6,110	394	707	190	18	28	64	--	--
Bulgaria	4,350	--	--	(6)	--	--	--	--	--	--	--	--
Canada	36,100	2,010	5,770	13,100	2,700	3,840	1,690	90	339	12,600	879	1,980
China	49,300	2,070	7,630	62	12	23	148	--	--	233	471	783
Germany	--	--	--	288	87	106	128	21	21	22	--	20
Hong Kong	9	--	--	--	--	--	86	11	33	18	--	--
India	20	--	--	37	--	--	247	22	42	--	--	--
Italy	--	--	--	--	--	--	197	1	24	86	(6)	(6)
Japan	14,600	--	--	251	117	192	24	--	--	4	(6)	1
Korea, Republic of	8,140	2,320	2,320	1	41	41	1,390	196	365	1,160	1	8
Malaysia	--	--	--	3	--	--	218	20	20	--	--	--
Mexico	250,000	21,000	48,900	2,720	24	24	848	3	25	26,800	1,590	4,470
Philippines	6,250	--	--	--	--	--	10	--	--	--	--	--
Singapore	--	--	--	256	--	--	36	--	10	13	1	6
Slovakia	--	--	--	1,050	79	216	--	--	--	--	--	--
Spain	8,990	--	--	1,820	61	136	35	--	--	--	--	--
Sweden	--	--	--	--	--	--	135	--	--	--	--	--
Thailand	--	--	--	2	--	--	256	--	--	(6)	--	--
Other	4,630	15	42	172	3	39	565	12	70	164	25	54
Total	383,000	27,400	64,700	25,900	3,510	5,320	6,210	394	979	41,200	2,970	7,320

-- Zero.

¹Data are rounded to no more than three significant digits; may not add to totals shown.

²Schedule B of the United States code 2603.00.0010. Includes copper ore and concentrates only; excludes copper contained in ore and concentrates of other metals.

³Schedule B codes 2620.30.0000, 7401.00.0010, and 7401.00.0050. Includes copper matte, ash, and precipitates only; excludes the copper content of mattes and ashes of other metals.

⁴Schedule B code 7402.00.0000.

⁵Schedule B codes 7403.11.0000, 7403.12.0000, 7403.13.0000, and 7403.19.0000.

⁶Less than ½ unit.

Source: U.S. Census Bureau.

TABLE 15
U.S. IMPORTS FOR CONSUMPTION OF COPPER SCRAP¹

(Metric tons, gross weight)

Country or locality	Unalloyed ²			Alloyed ³		
	2021			2021		
	2020	February	January–February	2020	February	January–February
Antigua and Barbuda	--	--	--	151	16	27
Bahamas	--	--	--	681	64	142
Brazil	--	--	--	164	19	37
Canada	14,500	1,030	2,150	41,300	3,630	7,730
Cayman Islands	4	--	--	262	5	47
Colombia	60	--	--	808	57	115
Costa Rica	619	81	119	934	119	260
Dominican Republic	876	78	195	1,150	204	323
Ecuador	--	--	--	154	--	20
El Salvador	--	--	--	294	149	160
Germany	179	14	32	108	--	44
Guatemala	--	--	--	289	20	49
Honduras	54	11	14	844	45	149
Jamaica	--	--	4	258	--	54
Mexico	9,450	866	1,660	37,100	3,200	6,660
Nicaragua	114	--	--	--	--	--
Panama	714	56	108	335	25	46
Peru	495	--	--	251	41	60
Vietnam	121	4	14	22	1	2
Other	362	51	80	1,400	95	348
Total	27,600	2,190	4,370	86,500	7,690	16,300

-- Zero.

¹Data are rounded to no more than three significant digits; may not add to totals shown.

²Harmonized Tariff Schedule of the United States (HTS) codes 7404.00.3020 and 7404.00.6020.

³HTS codes 7404.00.3045, 7404.00.3055, 7404.00.3065, 7404.00.3090, 7404.00.6045, 7404.00.6055, 7404.00.6065, and 7404.00.6090.

Source: U.S. Census Bureau.

TABLE 16
U.S. EXPORTS OF COPPER SCRAP¹

(Metric tons, gross weight)

Country or locality	Unalloyed ²						Alloyed ³					
	2020	2021						2020	2021			
		No. 1		No. 2		Other			Segregated		Unsegregated	
		February	January–February	February	January–February	February	January–February		February	January–February	February	January–February
Austria	3,970	--	--	171	366	--	--	1,010	--	--	--	--
Belgium	20,900	222	706	626	978	451	768	11,100	135	274	609	920
Canada	51,800	--	--	--	--	4,760	8,870	32,200	--	--	3,700	7,740
China	81,200	2,750	4,820	2,960	6,000	6,170	12,200	35,400	1,270	2,240	1,660	4,060
Germany	22,400	873	1,580	245	823	480	543	16,000	--	164	937	2,010
Greece	13,000	620	1,420	241	339	591	906	1,450	20	39	222	222
Hong Kong	7,810	208	435	317	839	393	565	7,750	68	173	241	381
India	9,570	257	384	100	160	237	401	34,800	1,070	2,270	1,110	2,440
Japan	16,400	151	438	711	1,540	177	277	13,800	77	235	620	1,120
Korea, Republic of	45,700	1,740	3,120	1,600	2,400	1,350	2,330	18,500	363	516	937	1,790
Malaysia	54,400	534	1,270	1,430	2,750	4,410	8,000	122,000	2,000	4,950	6,520	13,700
Pakistan	697	--	--	11	35	--	--	14,500	--	--	1,440	2,460
Poland	5,000	58	58	156	352	274	627	6,570	--	--	843	1,320
Russia	7,310	33	113	4	100	--	180	830	--	--	67	125
Spain	4,070	3	42	--	26	101	291	7,610	158	275	143	261
Taiwan	17,000	409	847	235	424	262	748	16,400	186	550	263	654
Thailand	4,800	2	125	24	57	157	834	20,900	120	321	2,770	3,330
Vietnam	7,480	37	57	2	2	--	--	2,340	--	37	20	62
Other	22,900	896	1,570	374	797	206	1,190	16,600	685	1,070	992	1,880
Total	396,000	8,800	17,000	9,200	18,000	20,000	38,700	380,000	6,150	13,100	23,100	44,500

-- Zero.

¹Data are rounded to no more than three significant digits; may not add to totals shown.

²Schedule B of the United States codes 7404.00.0010 and 7404.00.0015 (no. 1), 7404.00.0025 (no. 2), and 7404.00.0030 (other).

³Schedule B codes for segregated alloyed copper scrap are 7404.00.0041, 7404.00.0046, 7404.00.0051, 7404.00.0056, 7404.00.0061, 7404.00.0066, and 7404.00.0075. Schedule B codes for unsegregated alloyed copper scrap are 7404.00.0085 and 7404.00.0095.

Source: U.S. Census Bureau.