

# Mineral Industry Surveys

## For information, contact:

Amy C. Tolcin, Zinc Commodity Specialist  
 National Minerals Information Center  
 U.S. Geological Survey  
 989 National Center  
 Reston, VA 20192  
 Telephone: (703) 648-4940 Fax: (703) 648-7757  
 Email: atolcin@usgs.gov

Hodan A. Fatah (Data)  
 Telephone: (703) 648-4971  
 Fax: (703) 648-7975  
 Email: hfatah@usgs.gov

**Internet:** <https://www.usgs.gov/centers/nmic>

## ZINC IN JANUARY 2021

Domestic mine production (recoverable) of zinc in January 2021 was 71,500 metric tons (t) (tables 1, 2). Average daily mine production in January was 2,310 t, essentially unchanged from that in the previous month (revised) but 28% more than that in January 2020 (fig. 1).

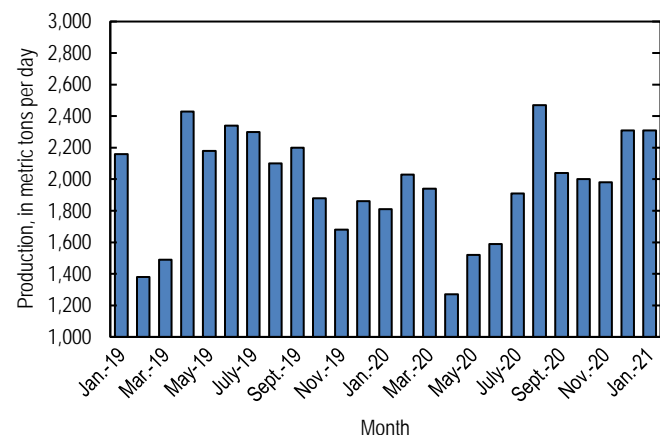


Figure 1. Average daily domestic zinc mine production (recoverable) from January 2019 through January 2021.

## Stocks and Prices

Global London Metal Exchange Ltd. (LME) stocks of Special High Grade (SHG) zinc were 291,750 t at the end of January 2021, 44% more than stocks at the end of the previous month and almost six times more than stocks at the end of January 2020 (fig. 2, table 8). Reported off-warrant stocks of SHG zinc in LME-approved warehouses at the end of January 2021 decreased to 65,440 t from 121,281 t at the end of December 2020 (London Metal Exchange Ltd., 2021a, b).

The monthly average S&P Global Platts Metals North American SHG zinc price in January 2021 was \$1.31 per pound, slightly less than that in the previous month but 13% more than

that in January 2020. The January 2021 average LME cash price for SHG zinc was \$2,707.70 per metric ton (\$1.23 per pound), slightly less than that in the previous month but 15% more than that in January 2020 (fig. 3, table 7).

The North American premium to the LME cash price in January 2021 averaged 7.7 cents per pound, slightly less than that in the previous month and 9% less than that in January 2020 (fig. 3, table 7).

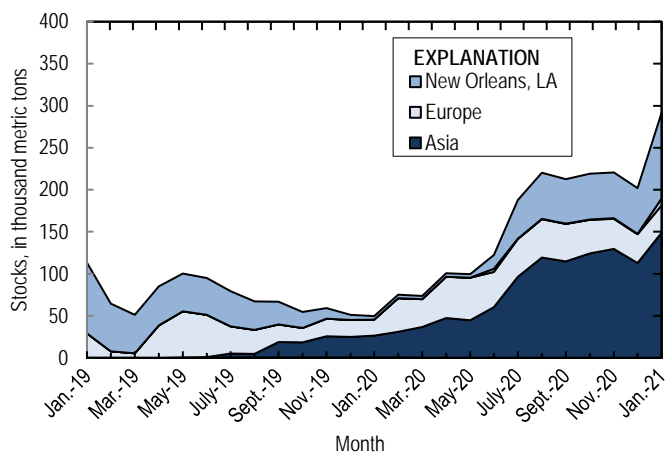


Figure 2. Global LME stocks of Special High Grade zinc, monthend, from January 2019 through January 2021. Source: London Metal Exchange Ltd.

## References Cited

- London Metal Exchange Ltd., 2021a, Off warrant stock reporting December 2020: London, United Kingdom, London Metal Exchange Ltd. (Accessed February 19, 2021, via <https://www.lme.com/en-GB/Market-Data/Reports-and-data/Warehouse-and-stocks-reports/Off-warrant-stock-reporting>.)
- London Metal Exchange Ltd., 2021b, Off warrant stock reporting January 2021: London, United Kingdom, London Metal Exchange Ltd. (Accessed March 30, 2021, via <https://www.lme.com/en-GB/Market-Data/Reports-and-data/Warehouse-and-stocks-reports/Off-warrant-stock-reporting>.)

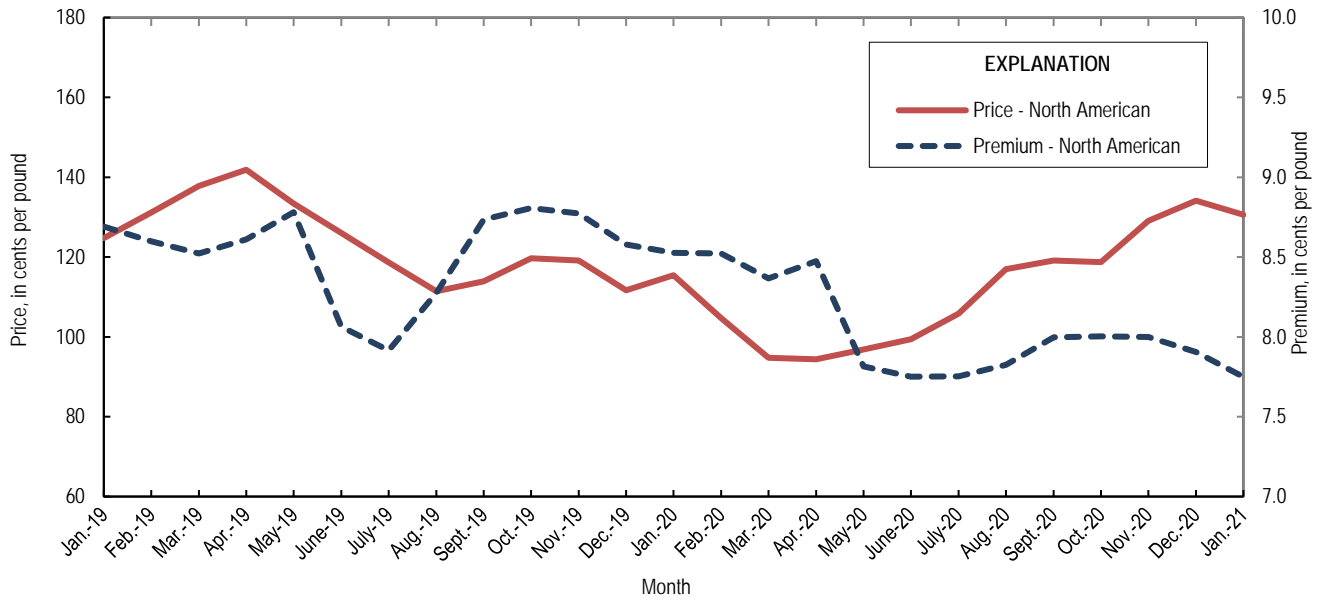


Figure 3. Average monthly North American price and premium for Special High Grade zinc from January 2019 through January 2021. Source: S&P Global Platts Metals Week.

*List services and web feed subscribers are the first to receive notification of USGS minerals information publications and data releases. For information on how to subscribe, go to <https://www.usgs.gov/centers/nmic/minerals-information-publication-list-services>.*

TABLE 1  
SALIENT ZINC STATISTICS<sup>1</sup>

(Metric tons, unless otherwise specified)

	2020		2021 January
	January– December <sup>p</sup>	December	
<b>Production:</b>			
Mine, zinc content of concentrate <sup>2</sup>	718,000 <sup>r</sup>	73,600 <sup>r</sup>	73,600
Mine, recoverable zinc <sup>2</sup>	697,000 <sup>r</sup>	71,500 <sup>r</sup>	71,500
Smelter, refined zinc <sup>e</sup>	180,000 <sup>r</sup>	18,000 <sup>r</sup>	18,000
Consumption of refined zinc, apparent <sup>3</sup>	878,000 <sup>r</sup>	68,700 <sup>r</sup>	75,200
<b>Imports for consumption:</b>			
Ore and concentrate (zinc content)	3,170	(4)	6,010
Refined zinc	700,000	50,900	57,500
<b>Exports:</b>			
Ore and concentrate (zinc content)	549,000	11,100	12,400
Refined zinc	2,480	197	261
<b>Price:<sup>5</sup></b>			
London Metal Exchange cash, average, dollars per metric ton	2,264.42	2,782.36	2,707.70
North American, <sup>6</sup> average, cents per pound	110.79	134.11	130.57

<sup>e</sup>Estimated. <sup>p</sup>Preliminary. <sup>r</sup>Revised.

<sup>1</sup>Data are rounded to no more than three significant digits, except prices; may not add to totals shown.

<sup>2</sup>Reported zinc content in both zinc and lead concentrates.

<sup>3</sup>Smelter production plus imports for consumption minus domestic exports.

<sup>4</sup>Less than ½ unit.

<sup>5</sup>Special High Grade Zinc.

<sup>6</sup>S&P Global Platts Metals.

TABLE 2  
MINE AND SMELTER PRODUCTION OF ZINC  
IN THE UNITED STATES<sup>1</sup>

(Metric tons)

Period	Mine <sup>2</sup>		Smelter <sup>e</sup>
	Zinc content	Recoverable	
2020:			
January	57,700	56,000	10,000
February	60,600	58,800	10,000
March	61,900	60,100	12,000 <sup>r</sup>
April	39,300	38,200	14,000 <sup>r</sup>
May	48,500	47,000	15,000 <sup>r</sup>
June	49,100	47,600	15,000 <sup>r</sup>
July	61,100 <sup>r</sup>	59,400 <sup>r</sup>	16,000 <sup>r</sup>
August	78,800 <sup>r</sup>	76,400 <sup>r</sup>	16,000 <sup>r</sup>
September	62,900 <sup>r</sup>	61,100 <sup>r</sup>	16,000 <sup>r</sup>
October	63,900 <sup>r</sup>	62,000 <sup>r</sup>	18,000 <sup>r</sup>
November	61,100 <sup>r</sup>	59,300 <sup>r</sup>	18,000 <sup>r</sup>
December	73,600 <sup>r</sup>	71,500 <sup>r</sup>	18,000 <sup>r</sup>
January–December	718,000 <sup>r</sup>	697,000 <sup>r</sup>	180,000 <sup>r</sup>
2021, January	73,600	71,500	18,000

<sup>e</sup>Estimated. <sup>r</sup>Revised.

<sup>1</sup>Data are rounded to no more than three significant digits; may not add to totals shown.

<sup>2</sup>Includes the zinc content in both lead and zinc concentrates.

TABLE 3  
U.S. IMPORTS FOR CONSUMPTION OF ZINC<sup>1</sup>

(Gross weight, unless otherwise specified)

Material	2020		2021 January	
	Quantity	Value	Quantity	Value
	(metric tons)	(thousands)	(metric tons)	(thousands)
Ore and concentrate (zinc content)	3,170	\$4,410	6,010	\$5,380
Unwrought:				
Refined zinc	700,000	1,600,000	57,500	156,000
Zinc alloys	1,370	3,680	661	1,720
Wrought:				
Bars, rods, profiles, wire	3,260	10,200	257	909
Plates, sheets, strip, foil	2,570	11,500	90	411
Ash and residues:				
Zinc dross and skimmings	3,800	5,680	304	583
Other (zinc content)	1,130	717	288	178
Other:				
Powders, flakes, dust	24,600	83,700	2,430	9,150
Waste and scrap	11,400	15,800	761	1,300
Chemicals:				
Lithopone	1,150	4,200	97	423
Zinc oxide	102,000	252,000	9,050	23,000
Zinc chloride	275	1,640	10	97
Zinc sulfate	92,600	70,900	7,450	6,480
Zinc sulfide	964	4,720	121	613

<sup>1</sup>Data are rounded to no more than three significant digits.

Source: U.S. Census Bureau.

TABLE 4  
U.S. IMPORTS OF ZINC, BY TYPE OF MATERIAL AND COUNTRY OR LOCALITY<sup>1</sup>

(Metric tons, gross weight, unless otherwise specified)

Material and country or locality	General imports		Imports for consumption	
	2020	2021 January	2020	2021 January
<b>Ore and concentrate (zinc content):</b>				
China	1,060	--	1,060	--
Mexico	(2)	394	(2)	394
Peru	2,100	5,620	2,100	5,620
Total	3,170	6,010	3,170	6,010
<b>Refined zinc:</b>				
Australia	33,000	--	2,000	1,500
Belgium	24,100	--	1	--
Brazil	21,900	--	13,400	--
Canada	489,000	37,400	489,000	37,400
China	108	(2)	108	(2)
Korea, Republic of	39,100	4,050	21,100	4,090
Mexico	130,000	11,100	130,000	11,100
Netherlands	1,470	--	--	--
Peru	44,400	3,360	44,400	3,360
Poland	100	--	100	--
Spain	20,000	--	123	--
Taiwan	24	--	24	--
Other	(2)	2	(2)	2
Total	803,000	56,000	700,000	57,500
<b>Oxide:</b>				
Australia	538	7	538	7
Canada	42,600	3,810	42,600	3,810
China	175	26	175	26
Germany	1,160	172	1,160	172
Greece	798	80	798	80
Japan	868	30	868	30
Mexico	43,100	3,830	43,100	3,830
Netherlands	9,030	647	9,030	647
Peru	3,850	402	3,850	402
Other	254	49	254	49
Total	102,000	9,050	102,000	9,050

-- Zero.

<sup>1</sup>Data are rounded to no more than three significant digits; may not add to totals shown.

<sup>2</sup>Less than ½ unit.

Source: U.S. Census Bureau.

TABLE 5  
U.S. EXPORTS OF ZINC<sup>1</sup>

(Gross weight, unless otherwise specified)

Material	2020		2021 January	
	Quantity	Value	Quantity	Value
	(metric tons)	(thousands)	(metric tons)	(thousands)
Ore and concentrate (zinc content)	549,000	\$806,000	12,400	\$24,800
Unwrought:				
Refined zinc	2,480	6,810	261	855
Zinc alloys	19,900	54,000	1,860	5,730
Wrought:				
Bars, rods, profiles, wire	9,500	28,900	900	2,570
Plates, sheets, strip, foil	5,460	20,300	769	2,800
Ash and residues:				
Hard zinc spelter	9,150	12,300	995	1,680
Other (zinc content)	23,000	30,700	1,830	2,760
Other:				
Powders, flakes, dust	13,600	49,500	650	2,330
Waste and scrap	25,000	29,600	2,510	3,510
Chemicals:				
Lithopone	522	1,900	39	207
Zinc oxide	44,900	56,000	5,510	7,900
Zinc chloride	419	747	5	19
Zinc sulfate	507	507	94	66
Zinc sulfide	1,420	13,000	333	1,700

<sup>1</sup>Data are rounded to no more than three significant digits.

Source: U.S. Census Bureau.

TABLE 6  
U.S. EXPORTS OF ZINC, BY TYPE OF MATERIAL AND COUNTRY OR LOCALITY<sup>1</sup>

(Metric tons, gross weight, unless otherwise specified)

Material and country or locality	2020	2021
		January
<b>Ore and concentrate (zinc content):</b>		
Australia	63,300	--
Belgium	40,000	--
Canada	287,000	5,060
Finland	15,700	--
Germany	21,100	--
Italy	5,290	--
Japan	38,500	1,020
Korea, Republic of	59,200	6,360
Peru	120	--
Spain	18,400	--
Other	31	4
<b>Total</b>	<b>549,000</b>	<b>12,400</b>
<b>Refined zinc:</b>		
Australia	34	--
Canada	962	178
Colombia	124	--
Guatemala	10	--
India	297	--
Mexico	833	82
Panama	50	--
Vietnam	164	--
Other	5	1
<b>Total</b>	<b>2,480</b>	<b>261</b>
<b>Oxide:</b>		
Australia	503	--
Canada	3,290	229
India	385	5
Mexico	38,500	5,140
Other	2,190	136
<b>Total</b>	<b>44,900</b>	<b>5,510</b>

-- Zero.

<sup>1</sup>Data are rounded to no more than three significant digits; may not add to totals shown.

Source: U.S. Census Bureau.



TABLE 7  
AVERAGE PRICES FOR SPECIAL HIGH GRADE ZINC

Period	North American		London Metal Exchange	
	Premium	Price <sup>1</sup>	cash <sup>2</sup>	
	¢/lb.	¢/lb.	¢/lb.	\$/t
2020:				
January	8.5	115.42	106.89	2,356.60
February	8.5	104.68	96.16	2,119.90
March	8.4	94.79	86.42	1,905.33
April	8.5	94.39	85.91	1,894.08
May	7.8	96.87	89.06	1,963.40
June	7.8	99.40	91.65	2,020.61
July	7.8	105.83	98.08	2,162.24
August	7.8	117.00	109.17	2,406.83
September	8.0	119.15	111.15	2,450.50
October	8.0	118.75	110.75	2,441.55
November	8.0	129.10	121.10	2,669.69
December	7.9	134.11	126.21	2,782.36
January–December	8.1	110.79	102.71	2,264.42
2021, January	7.7	130.57	122.82	2,707.70

<sup>1</sup>S&P Global Platts Metals Week North American price. Based on the London Metal Exchange cash price plus the North American premium.

<sup>2</sup>Average of the cash buyer price and the cash seller and settlement price.

Source: S&P Global Platts Metals Week.

TABLE 8  
LONDON METAL EXCHANGE (LME) STOCKS OF SPECIAL HIGH GRADE ZINC, END OF PERIOD

(Metric tons)

Period	United States			Asia	Europe	Other	Total LME
	Baltimore, MD,	New Orleans, LA	Total				
2020:							
January	--	4,150	4,150	25,950	19,300	375	49,775
February	--	4,100	4,100	30,750	40,000	350	75,200
March	--	4,000	4,000	36,650	32,950	200	73,800
April	--	4,200	4,200	47,325	49,225	100	100,850
May	--	4,175	4,175	44,700	50,675	25	99,575
June	3,825	16,675	20,500	60,425	41,625	--	122,550
July	475	46,075	46,550	96,525	44,900	--	187,975
August	475	54,650	55,125	119,300	45,700	--	220,125
September	475	52,950	53,425	114,575	44,575	--	212,575
October	475	54,500	54,975	124,200	40,025	--	219,200
November	475	54,500	54,975	129,700	35,825	--	220,500
December	475	54,500	54,975	113,025	34,075	--	202,075
2021, January	8,150	102,150	110,300	149,000	32,450	--	291,750

-- Zero.

Source: London Metal Exchange, Ltd.