

Mineral Industry Surveys

For information, contact:

Daniel M. Flanagan, Copper Commodity Specialist
 National Minerals Information Center
 U.S. Geological Survey
 989 National Center
 Reston, VA 20192
 Telephone: (703) 648-7726, Fax: (703) 648-7757
 Email: dflanagan@usgs.gov

Sheema Merchant (Data)
 Telephone: (703) 659-9944
 Fax: (703) 648-7975
 Email: smerchant@usgs.gov

Internet: <https://www.usgs.gov/centers/nmic>

COPPER IN JANUARY 2021

In January 2021, domestic mine production of recoverable copper was 97,500 metric tons (t) (table 2). The average daily mine production was 3,140 t, a decrease of 3% from that in December 2020 and a slight decline compared with that in January 2020 (fig. 1).

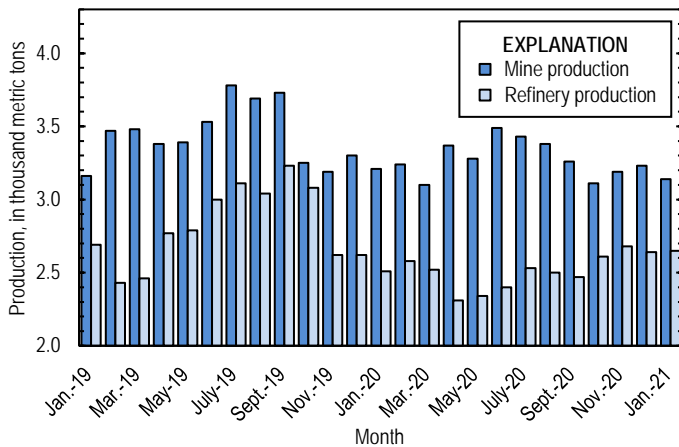


Figure 1. Average daily U.S. copper mine (recoverable) and refinery (primary and secondary) production from January 2019 through January 2021. Refinery production in November and December 2019 were withheld to avoid disclosing company proprietary data; the values shown reflect the daily average for cumulative production over this period rather than production in each month.

Owing to temporary closures of ASARCO LLC’s smelter in Arizona and electrolytic refinery in Texas, smelter and electrolytic refinery production reported to the U.S. Geological Survey in January 2021 were withheld to avoid disclosing company proprietary data. Smelter and electrolytic refinery output in tables 3 and 4 are estimates based on information in quarterly company reports. The facilities shut down in October 2019 because of a worker strike, which reportedly ended in July 2020 (Wichner, 2021). As of January 2021, ASARCO had not announced when operations were expected to resume or a reason for the continued closures.

Estimated U.S. smelter production was 35,000 t in January

2021, and the estimated average daily output was 1,130 t (table 3). Total refinery production in the United States was 85,300 t; data for electrolytic and electrowon output, as well as refined production from scrap, are reported in table 4. Average daily total refinery production was 2,750 t, an increase of 4% from that in December 2020 and 9% greater than that in January 2020 (fig. 1).

Prices

In January 2021, the COMEX spot copper price rose for the ninth consecutive month and averaged \$3.62 per pound, an increase of 3% from \$3.53 per pound in December 2020 and 32% higher than \$2.75 per pound in January 2020 (fig. 2, table 11). The average U.S. dealers buying price of number 2 copper scrap in January 2021 was \$2.67 per pound, an increase of 3% compared with \$2.58 per pound in December 2020 and 33% more than \$2.00 per pound in January 2020 (fig. 2, table 12).

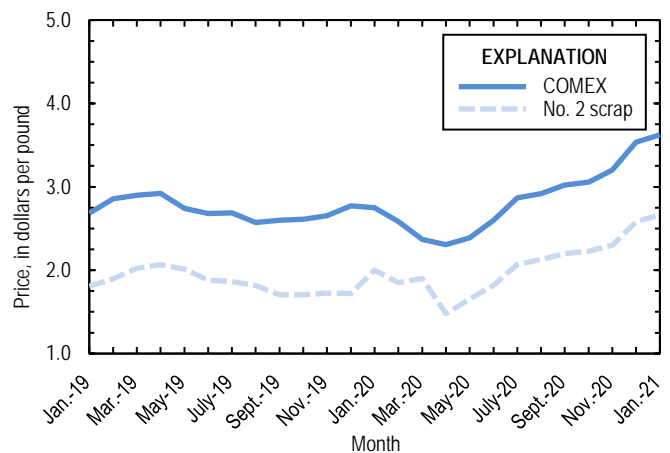


Figure 2. Monthly average COMEX copper price and no. 2 copper scrap dealers buying price from January 2019 through January 2021. As of January 2020, no. 2 prices were available only for the entire United States, whereas no. 2 prices were available only for individual domestic markets prior to January 2020. Prices shown prior to January 2020 are for New York dealers no. 2 scrap. Sources: Fastmarkets-AMM and S&P Global Platts Metals Week.

Stocks

Refined copper stocks in the United States totaled 111,000 t at the end of January 2021, a decrease of 6% from those in December 2020 and 19% higher than those in January 2020. COMEX stocks fell by 5%, London Metal Exchange Ltd. stocks in U.S. warehouses declined by 9%, and wire-rod mill stocks decreased by 14% from those at the end of December 2020 (fig. 3, table 10).

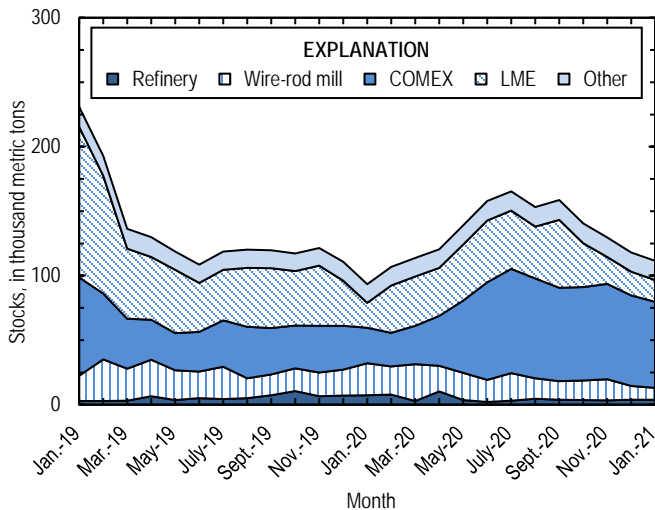


Figure 3. Monthly domestic refined copper stocks, by type, from January 2019 through January 2021. Sources: Fastmarkets-AMM, London Metal Exchange Ltd., and U.S. Geological Survey.

Industry News

China.—Effective January 1, 2021, the Government of China banned imports of material that it classifies as solid waste. Copper scrap imported into the country was required to contain at least 94% to 99.9% copper, depending on the scrap type (CRU International Ltd., 2020; Mir, 2020; Staub, 2020). Despite the new restrictions, U.S. exports of alloyed copper scrap to China in January 2021 totaled 3,380 t (gross weight) compared with a monthly average of 2,950 t in 2020. Domestic exports of unalloyed copper scrap to China were 11,100 t compared with a monthly average of 6,770 t in 2020 (table 16).

References Cited

- CRU International Ltd., 2020, CRU copper China fortnightly: London, United Kingdom, CRU International Ltd., October 30, 5 p. (Accessed November 6, 2020, via <http://www.crugroup.com/>.)
- Mir, Fawad, 2020, China updates copper, aluminum scrap metal import standards: S&P Global Market Intelligence, January 20. (Accessed January 24, 2020, via <http://www.snl.com/>.)
- Staub, Colin, 2020, China confirms expanded import ban starting Jan. 1: Resource Recycling, Inc., December 1. (Accessed December 18, 2020, at <https://resource-recycling.com/recycling/2020/12/01/china-confirms-expanded-import-ban-starting-jan-1/>.)
- Wichner, David, 2021, Tucson-based Asarco facing new charges over post-strike labor practices: Arizona Daily Star [Tucson, AZ], April 26. (Accessed May 14, 2021, at https://tucson.com/business/tucson-based-asarco-facing-new-charges-over-post-strike-labor-practices/article_ea8fb10c-a468-11eb-9063-3b0056bca30b.html.)

List services and web feed subscribers are the first to receive notification of USGS minerals information publications and data releases. For information on how to subscribe, go to <https://www.usgs.gov/centers/nmic>.

TABLE 1
SALIENT STATISTICS OF THE COPPER INDUSTRY IN THE UNITED STATES¹

(Metric tons of copper content, unless otherwise specified)

	Source table ²	2020				2021 January
		2019 ^p	November	December	January– December	
Production:						
Primary:						
Mine, recoverable	(2)	1,260,000	95,700	100,000	1,200,000	97,500
Smelter	(3)	464,000	30,000 ^e	30,000 ^e	315,000 ^e	35,000 ^e
Refinery:						
Electrolytic, domestic and foreign	(4)	457,000	30,000 ^e	30,000 ^e	315,000 ^e	35,000 ^e
Electrowon	(4)	527,000	47,100	48,400	559,000	47,100
Total	(4)	985,000	77,100	78,400	874,000	82,100
Secondary recoverable copper:³						
Refineries	(5)	44,400	3,290	3,300	43,200	3,220
Ingot makers ⁴	(5)	57,900	4,820	4,820	57,900	4,820
Brass and wire-rod mills	(5)	653,000	55,900	58,400	670,000	57,800
Foundries, etc. ⁴	(5)	36,700	3,060	3,060	36,700	3,060
Consumption:						
Apparent, primary refined and copper from old scrap	(8)	1,810,000	150,000	154,000	1,660,000	140,000
Reported, refined copper	(7)	1,830,000	145,000	140,000	1,710,000	134,000
Purchased copper-base scrap (gross weight)	(9)	923,000	77,900	80,500	938,000	85,900
Stocks at end of period:						
Total refined	(10)	111,000	130,000	118,000	118,000	111,000
Blister and anode	(10)	16,400	12,500	9,380	9,380	8,800
Price, U.S. producers cathode (cents per pound) ⁵	(11)	279.596	327.338	360.470	286.745	369.318
Imports:⁶						
Ore and concentrates	(13)	27,000	--	--	2,170	88
Refined	(13)	663,000	53,300	57,400	676,000	42,400
Exports:⁶						
Ore and concentrates	(14)	353,000	33,500	27,500	383,000	37,300
Refined	(14)	125,000	3,090	5,150	41,200 ^r	4,350

^eEstimated. ^pPreliminary. ^rRevised. -- Zero.

¹Data are rounded to no more than three significant digits, except prices; may not add to totals shown.

²Numbers in parentheses refer to the tables where these data are located.

³Copper recovered from copper-base scrap only.

⁴Estimated based on the monthly average of 2018 annual data.

⁵Source: S&P Global Platts Metals Week.

⁶Source: U.S. Census Bureau.

TABLE 2
MINE PRODUCTION OF RECOVERABLE COPPER IN THE UNITED STATES¹

(Metric tons)

Period	Recoverable copper			Contained copper		
	Arizona	Others ²	Total	Electrowon	Concentrates ³	Total
2020: ^P						
January	70,800	28,800	99,600	44,600	57,200	102,000
February	65,400	28,600	94,000	41,000	55,100	96,100
March	67,600	28,400	96,000	44,900	53,100	98,000
April	76,400	24,700	101,000	44,600	58,800	103,000
May	75,500	26,200	102,000	48,200	55,700	104,000
June	77,800	26,800	105,000	48,300	58,600	107,000
July	79,500	26,700	106,000	49,600	58,900	109,000
August	78,900	25,900	105,000	49,100	57,900	107,000
September	72,600	25,300	97,900	45,700	54,300	100,000
October	71,000	25,500	96,500	47,600	50,800	98,500
November	69,900	25,800	95,700	47,100	50,600	97,700
December	75,000	25,100	100,000	48,400	53,800	102,000
January–December	880,000	318,000	1,200,000	559,000	665,000	1,220,000
2021, January	71,600	25,900	97,500	47,100	52,500	99,600

^PPreliminary.

¹Data are rounded to no more than three significant digits; may not add to totals shown.

²Includes production from Michigan, Missouri, Montana, Nevada, New Mexico, and Utah.

³Includes copper content of precipitates and other metal concentrates.

TABLE 3
COPPER PRODUCED AT SMELTERS IN
THE UNITED STATES^{1,2}

(Metric tons, copper content)

Period	Anode production ^{e, 3}
2020: ^p	
January	30,000
February	30,000
March	30,000
April	20,000
May	20,000
June	20,000
July	25,000
August	25,000
September	25,000
October	30,000
November	30,000
December	30,000
January–December	315,000
2021, January	35,000

^eEstimated. ^pPreliminary.

¹Data are rounded to no more than three significant digits; may not add to totals shown.

²Includes blister and copper anode from primary or secondary sources.

³To avoid disclosing company proprietary data, monthly smelter production data are estimates based on information in quarterly public company reports and do not reflect actual production reported to the U.S. Geological Survey.

TABLE 4
U.S. PRODUCTION OF REFINED COPPER, BY SOURCE AND METHOD OF RECOVERY¹

(Metric tons)

Period	Primary materials			Scrap	Total refined
	Electrolytically refined ^{e, 2, 3}	Electrowon	Total		
2020: ^p					
January	30,000	44,600	74,600	3,260	77,900
February	30,000	41,000	71,000	3,820	74,800
March	30,000	44,900	74,900	3,220	78,100
April	20,000	44,600	64,600	4,530	69,100
May	20,000	48,200	68,200	4,380	72,600
June	20,000	48,300	68,300	3,620	71,900
July	25,000	49,600	74,600	3,720	78,400
August	25,000	49,100	74,100	3,380	77,500
September	25,000	45,700	70,700	3,490	74,200
October	30,000	47,600	77,600	3,220	80,900
November	30,000	47,100	77,100	3,290	80,400
December	30,000	48,400	78,400	3,300	81,700
January–December	315,000	559,000	874,000	43,200	918,000
2021, January	35,000	47,100	82,100	3,220	85,300

^eEstimated. ^pPreliminary.

¹Data are rounded to no more than three significant digits; may not add to totals shown.

²From domestic and foreign source materials.

³To avoid disclosing company proprietary data, monthly electrolytically refined production data are estimates based on information in quarterly public company reports and do not reflect actual production reported to the U.S. Geological Survey.

TABLE 5
COPPER RECOVERABLE IN UNALLOYED AND ALLOYED FORM FROM PURCHASED COPPER-BASE SCRAP
IN THE UNITED STATES¹

(Metric tons, copper content)

Period	Refineries ²		Ingot makers ³		Brass and wire-rod mills		Foundries, etc. ³		Total ⁴
	New scrap ^e	Old scrap	New scrap	Old scrap	New scrap	Old scrap	New scrap	Old scrap	
2020: ^p									
January	1,680	1,590	768	4,060	53,400	3,760	2,150	913	68,300
February	1,680	2,140	768	4,060	52,400	3,580	2,150	913	67,700
March	1,680	1,540	768	4,060	52,100	3,370	2,150	913	66,600
April	1,680	2,850	768	4,060	51,800	2,950	2,150	913	67,100
May	1,680	2,700	768	4,060	51,300	2,600	2,150	913	66,200
June	1,680	1,940	768	4,060	51,700	3,030	2,150	913	66,300
July	1,680	2,040	768	4,060	53,400	3,290	2,150	913	68,300
August	1,680	1,700	768	4,060	52,200	3,120	2,150	913	66,600
September	1,680	1,810	768	4,060	50,700	3,300	2,150	913	65,400
October	1,680	1,540	768	4,060	53,600	3,540	2,150	913	68,300
November	1,680	1,620	768	4,060	52,900	3,000	2,150	913	67,100
December	1,680	1,620	768	4,060	55,800	2,590	2,150	913	69,600
January–December	20,100	23,100	9,220	48,700	631,000	38,100	25,800	11,000	807,000
2021, January	1,680	1,540	768	4,060	53,700	4,110	2,150	913	68,900

^eEstimated. ^pPreliminary.

¹Data are rounded to no more than three significant digits; may not add to totals shown.

²Electrolytically refined and fire refined from scrap based on source of material at smelter or refinery level.

³Monthly data estimated based on the monthly average of 2018 annual data.

⁴Does not include an estimate, based on reported 2018 annual data, of 3,380 tons per month from new scrap and 2,710 tons per month from old scrap of copper recovered from scrap other than copper-base.

TABLE 6
U.S. PRODUCTION, SHIPMENTS, AND STOCKS OF BRASS AND WIRE-ROD SEMIFABRICATES¹

(Metric tons, gross weight)

Period	Production		Shipments		Stocks, end of period	
	Brass mills	Wire-rod mills	Brass mills	Wire-rod mills	Brass mills	Wire-rod mills
2020: ^P						
January	73,700	110,000	74,200	106,000	29,400	27,800
February	73,900	110,000	73,600	106,000	29,700	31,800
March	74,500	108,000	74,100	112,000	30,100	27,800
April	72,500	94,600	73,500	96,200	29,000	26,100
May	73,400	95,300	73,400	91,400	29,000	30,000
June	73,700	89,400	73,600	96,100	29,200	23,400
July	73,500	108,000	73,300	104,000	29,300	27,000
August	73,700	104,000	73,600	111,000	29,400	20,000
September	73,800	107,000	73,700	108,000	29,500	18,600
October	74,400	108,000	74,900	110,000	29,000	16,400
November	73,600	106,000	73,600	106,000	29,000	16,000
December	73,700	101,000	74,000	97,800	28,700	19,000
January–December	884,000	1,240,000	885,000	1,240,000	28,700	19,000
2021, January	73,600	104,000	74,000	106,000	28,300	16,800

^PPreliminary.

¹Data are rounded to no more than three significant digits; may not add to totals shown.

TABLE 7
U.S. CONSUMPTION OF REFINED COPPER¹

(Metric tons)

Period	Brass mills	Wire-rod mills	Other plants ²	Total
2020: ^p				
January	34,500	109,000	5,450	149,000
February	33,600	109,000	5,450	148,000
March	33,600	97,900	5,450	137,000
April	34,500	102,000	5,450	142,000
May	34,100	94,500	5,450	134,000
June	34,700	88,200	5,450	128,000
July	34,300	107,000	5,450	147,000
August	34,700	103,000	5,450	143,000
September	34,600	106,000	5,450	146,000
October	34,600	106,000	5,450	147,000
November	34,600	105,000	5,450	145,000
December	34,800	99,900	5,450	140,000
January–December	413,000	1,230,000	65,400	1,710,000
2021, January	34,700	93,400	5,450	134,000

^pPreliminary.

¹Data are rounded to no more than three significant digits; may not add to totals shown.

²Monthly consumption data by ingot makers, chemical plants, foundries, and miscellaneous manufacturers are estimated based on the monthly average of 2018 annual data.

TABLE 8
U.S. APPARENT CONSUMPTION OF COPPER¹

(Metric tons)

Period	Primary refined copper production	Copper in old scrap ²	Refined imports for consumption ³	Refined exports ³	Stock change during period	Apparent consumption
2020: ^p						
January	74,600	13,000	62,300	4,170	-17,300	163,000
February	71,000	13,400	34,400	2,460 ^r	13,400	103,000
March	74,900	12,600	69,800 ^r	3,730 ^r	6,860	147,000
April	64,600	13,500	74,900 ^r	1,550 ^r	6,790	145,000 ^r
May	68,200	13,000	66,200	540	18,600	128,000
June	68,300	12,700	63,300	1,220	18,900	124,000
July	74,600	13,000	37,300	5,300	7,430	112,000
August	74,100	12,500	59,800	6,470	-12,100	152,000
September	70,700	12,800	39,900	4,570	5,410	113,000
October	77,600	12,800	57,300	2,930	-18,100	163,000
November	77,100	12,300	53,300	3,090	-10,800	150,000
December	78,400	11,900	57,400	5,150	-11,700	154,000
January–December	874,000	153,000	676,000	41,200 ^r	7,370	1,660,000
2021, January	82,100	13,300	42,400	4,350	-6,490	140,000

^pPreliminary. ^rRevised.

¹Data are rounded to no more than three significant digits; may not add to totals shown.

²Copper recovered from old scrap and converted to refined metal and alloys. Includes reported monthly production of copper from old scrap of copper-base, an estimate for annual reporters, and a monthly average of copper from non-copper-base materials based on 2018 annual data.

³Source: U.S. Census Bureau.

TABLE 9
U.S. CONSUMPTION OF PURCHASED COPPER-BASE SCRAP¹

(Metric tons, gross weight)

Period	Smelters and refineries		Ingot makers ²		Brass and wire-rod mills ³		Foundries, etc. ²		Total scrap used
	New scrap ^c	Old scrap	New scrap	Old scrap	New scrap	Old scrap	New scrap	Old scrap	
2020: ^p									
January	1,730	1,660	2,050	4,790	61,600	3,960	2,570	1,010	79,400
February	1,730	2,180	2,050	4,790	60,500	3,790	2,570	1,010	78,700
March	1,730	1,590	2,050	4,790	60,300	3,590	2,570	1,010	77,600
April	1,730	2,940	2,050	4,790	59,900	3,150	2,570	1,010	78,100
May	1,730	2,790	2,050	4,790	59,500	2,760	2,570	1,010	77,200
June	1,730	2,000	2,050	4,790	59,800	3,160	2,570	1,010	77,100
July	1,730	2,100	2,050	4,790	61,400	3,340	2,570	1,010	79,000
August	1,730	1,750	2,050	4,790	60,200	3,200	2,570	1,010	77,300
September	1,730	1,870	2,050	4,790	58,700	3,410	2,570	1,010	76,100
October	1,730	1,590	2,050	4,790	61,700	3,710	2,570	1,010	79,200
November	1,730	1,670	2,050	4,790	60,900	3,130	2,570	1,010	77,900
December	1,730	1,670	2,050	4,790	64,000	2,750	2,570	1,010	80,500
January–December	20,700	23,800	24,600	57,500	729,000	39,900	30,800	12,100	938,000
2021, January	1,730	1,590	2,050	4,790	68,000	4,190	2,570	1,010	85,900

^cEstimated. ^pPreliminary.

¹Data are rounded to no more than three significant digits; may not add to totals shown.

²Monthly data estimated based on the monthly average of 2018 annual data.

³Consumption at brass and wire-rod mills assumed equal to receipts.

TABLE 10
COPPER STOCKS IN THE UNITED STATES AT END OF PERIOD¹

(Metric tons)

Period	Blister and anode ²	Refined copper					LME ⁴	Total refined
		Refineries	Wire-rod mills	Brass mills	Other ³	Comex		
2020: ^P								
January	9,590	7,200	24,800	7,330	7,070	27,600	19,300	93,300
February	17,900	7,810	21,900	7,250	7,070	26,000	36,700	107,000
March	7,940	2,750	28,600	7,290	7,070	29,800	38,100	114,000
April	7,430	10,300	19,900	7,210	7,070	38,700	37,200	120,000
May	11,900	3,550	21,200	7,730	7,070	55,900	43,500	139,000
June	11,000	2,070	17,200	7,900	7,070	75,600	48,000	158,000
July	11,300	3,090	21,200	7,770	7,070	81,000	45,200	165,000
August	15,700	4,490	15,900	8,210	7,070	77,400	40,200	153,000
September	13,500	3,730	14,500	8,200	7,070	72,400	52,700	159,000
October	15,200	3,460	15,300	8,170	7,070	72,500	34,000	140,000
November	12,500	3,420	16,200	8,100	7,070	74,000	20,900	130,000
December	9,380	3,850	10,700	7,850	7,070	70,200	18,300	118,000
2021, January	8,800	3,810	9,190	7,970	7,070	66,800	16,700	111,000

^PPreliminary.

¹Data are rounded to no more than three significant digits; may not add to totals shown.

²Copper content.

³Monthly estimates based on 2018 annual data, comprising stocks at ingot makers, chemical plants, foundries, and miscellaneous manufacturers.

⁴London Metal Exchange Ltd., U.S. warehouses.

TABLE 11
 AVERAGE PRICE OF COPPER IN THE UNITED STATES
 AND ON THE LONDON METAL EXCHANGE

(Cents per pound)

Period	U.S. producers cathode ¹	Comex first position ²	LME cash price Grade A
2020:			
January	282.467	274.967	274.362
February	265.695	258.382	257.907
March	243.464	236.714	234.886
April	236.881	230.631	228.985
May	245.090	238.715	237.402
June	266.305	259.805	260.470
July	293.300	286.600	288.202
August	298.377	291.752	294.685
September	309.052	302.302	304.470
October	312.495	305.695	304.033
November	327.338	320.338	320.392
December	360.470	353.470	351.772
Year	286.745	279.948	279.797
2021, January	369.318	362.318	361.536

¹Sum of "Comex high grade first position" and "NY dealer premium cathode."

²Listed as "Comex high grade first position."

Source: S&P Global Platts Metals Week.

TABLE 12
 AVERAGE BUYING PRICES FOR COPPER SCRAP IN THE UNITED STATES

(Cents per pound)

Period	Brass mills No. 1 scrap	Refiners No. 2 scrap	Dealers (United States)	
			No. 2 scrap	Red brass turnings and borings
2020:				
January	262.29	234.76	200.00	139.00
February	244.87	218.26	185.00	115.00
March	223.75	197.73	190.00	139.00
April	219.33	196.05	148.00	125.00
May	230.18	208.95	165.00	111.00
June	253.82	232.41	182.09	120.55
July	279.55	258.32	207.09	130.00
August	282.05	258.79	212.52	124.76
September	291.05	262.19	220.00	128.86
October	291.93	261.84	222.73	130.00
November	306.26	277.53	230.00	139.47
December	339.98	314.75	258.18	165.45
Year	268.76	243.47	201.72	130.67
2021, January	349.74	320.61	266.50	167.00

Source: Fastmarkets-AMM.

TABLE 13
U.S. IMPORTS FOR CONSUMPTION OF COPPER (UNMANUFACTURED), BY CLASS¹

(Metric tons, copper content)

Country or locality	Ore and concentrates ²		Matte, ash, and precipitates ³		Blister and anodes ⁴		Refined ⁵	
	2021		2021		2021		2021	
	2020	January	2020	January	2020	January	2020	January
Bahrain	--	--	--	--	--	--	76	--
Belgium	--	--	354	--	--	--	--	--
Bolivia	--	--	--	--	--	--	1,030	192
Canada	2,170	88	459	42	(6)	(6)	149,000	12,300
Chile	--	--	--	--	--	--	410,000 ^r	18,600
China	--	--	(6)	--	--	--	426	27
Congo (Kinshasa)	--	--	--	--	--	--	148	--
Finland	--	--	--	--	275	16	--	--
Germany	--	--	--	102	(6)	--	1,910	205
Japan	--	--	176	48	(6)	--	2,060	18
Korea, Republic of	--	--	--	--	(6)	--	72	--
Mexico	--	--	(6)	(6)	(6)	--	95,200	9,330
Peru	--	--	--	--	--	--	14,500	1,090
Spain	--	--	49	--	--	--	654	--
Other	--	--	22 ^r	--	5	1	50 ^r	696
Total	2,170	88	1,060	193	281	17	676,000	42,400

¹Revised. -- Zero.

²Data are rounded to no more than three significant digits; may not add to totals shown.

³Harmonized Tariff Schedule of the United States (HTS) code 2603.00.0010. Includes copper ore and concentrates only; excludes copper contained in ore and concentrates of other metals.

⁴HTS codes 2620.30.0010 and 7401.00.0000. Includes copper matte, ash, and precipitates only; excludes the copper content of mattes and ashes of other metals.

⁵HTS code 7402.00.0000.

⁶HTS codes 7403.11.0000, 7403.12.0000, 7403.13.0000, and 7403.19.0000.

^rLess than ½ unit.

Source: U.S. Census Bureau.

TABLE 14
U.S. EXPORTS OF COPPER (UNMANUFACTURED), BY CLASS¹

(Metric tons, copper content)

Country or locality	Ore and concentrates ²		Matte, ash, and precipitates ³		Blister and anodes ⁴		Refined ⁵	
	2021		2021		2021		2021	
	2020	January	2020	January	2020	January	2020	January
Belgium	230	25	6,110	313	190	11	64	--
Bulgaria	4,350	--	(6)	--	--	--	--	--
Canada	36,100	3,760	13,100 ^r	1,140	1,690	249	12,600 ^r	1,110
China	49,300 ^r	5,560	62	12	148	--	233	312
Germany	--	--	288	19	128	--	22	20
Hong Kong	9	--	--	--	86	23	18	--
India	20	--	37	--	247	19	--	--
Italy	--	--	--	--	197	23	86	(6)
Japan	14,600 ^r	--	251	76	24	--	4	(6)
Korea, Republic of	8,140 ^r	--	1	--	1,390	169	1,160	7
Malaysia	--	--	3	--	218	--	--	--
Mexico	250,000	27,900	2,720	--	848	23	26,800	2,870
Philippines	6,250	--	--	--	10	--	--	--
Singapore	--	--	256	--	36	10	13	6
Slovakia	--	--	1,050	138	--	--	--	--
Spain	8,990	--	1,820	76	35	--	--	--
Sweden	--	--	--	--	135	--	--	--
Thailand	--	--	2	--	256	--	(6)	--
Other	4,630	28	172 ^r	36	565 ^r	59	164 ^r	29
Total	383,000 ^r	37,300	25,900 ^r	1,810	6,210 ^r	585	41,200 ^r	4,350

^rRevised. -- Zero.

¹Data are rounded to no more than three significant digits; may not add to totals shown.

²Harmonized Tariff Schedule of the United States (HTS) code 2603.00.0010. Includes copper ore and concentrates only; excludes copper contained in ore and concentrates of other metals.

³HTS codes 2620.30.0000, 7401.00.0010, and 7401.00.0050. Includes copper matte, ash, and precipitates only; excludes the copper content of mattes and ashes of other metals.

⁴HTS code 7402.00.0000.

⁵HTS codes 7403.11.0000, 7403.12.0000, 7403.13.0000, and 7403.19.0000.

⁶Less than ½ unit.

Source: U.S. Census Bureau.

TABLE 15
U.S. IMPORTS FOR CONSUMPTION OF COPPER SCRAP¹

(Metric tons, gross weight)

Country or locality	Unalloyed ²		Alloyed ³	
	2020	2021 January	2020	2021 January
Antigua and Barbuda	--	--	151	11
Bahamas	--	--	681	78
Brazil	--	--	164	18
Canada	14,500	1,120	41,300	4,110
Cayman Islands	4	--	262	42
Colombia	60	--	808	58
Costa Rica	619	38	934	141
Dominican Republic	876	117	1,150	119
Ecuador	--	--	154	20
El Salvador	--	--	294	11
Germany	179	19	108	44
Guatemala	--	--	289	29
Honduras	54	3	844	103
Jamaica	--	4	258	54
Mexico	9,450	789	37,100	3,460
Nicaragua	114	--	--	--
Panama	714	52	335	21
Peru	495	--	251	19
Vietnam	121	10	22	1
Other	362 ^r	30	1,400 ^r	253
Total	27,600	2,180	86,500	8,590

^rRevised. -- Zero.

¹Data are rounded to no more than three significant digits; may not add to totals shown.

²Harmonized Tariff Schedule of the United States (HTS) codes 7404.00.3020 and 7404.00.6020.

³HTS codes 7404.00.3045, 7404.00.3055, 7404.00.3065, 7404.00.3090, 7404.00.6045, 7404.00.6055, 7404.00.6065, and 7404.00.6090.

Source: U.S. Census Bureau.

TABLE 16
U.S. EXPORTS OF COPPER SCRAP¹

(Metric tons, gross weight)

Country or locality	Unalloyed ²			Alloyed ³			
	2021			2021			
	2020	No. 1 January	No. 2 January	Other January	2020	Segregated January	Unsegregated January
Austria	3,970	--	194	--	1,010	--	--
Belgium	20,900	484	353	317	11,100	139	311
Canada	51,800	--	--	4,110	32,200	--	4,040
China	81,200 ^r	2,070	3,050	6,010	35,400 ^r	973	2,400
Germany	22,400 ^r	702	578	63	16,000	164	1,070
Greece	13,000	799	98	315	1,450	19	--
Hong Kong	7,810 ^r	227	522	172	7,750 ^r	105	140
India	9,570 ^r	128	59	163	34,800	1,200	1,340
Japan	16,400 ^r	287	825	100	13,800 ^r	158	498
Korea, Republic of	45,700 ^r	1,380	804	977	18,500 ^r	153	850
Malaysia	54,400	732	1,320	3,580	122,000	2,950	7,190
Pakistan	697	--	24	--	14,500 ^r	--	1,020
Poland	5,000	--	197	354	6,570	--	472
Russia	7,310	80	96	180	830	--	58
Spain	4,070	40	26	190	7,610	117	119
Taiwan	17,000 ^r	439	189	486	16,400 ^r	364	391
Thailand	4,800 ^r	123	32	677	20,900 ^r	201	555
Vietnam	7,480	20	--	--	2,340	37	42
Other	22,900 ^r	675	422	986	16,600 ^r	388	888
Total	396,000 ^r	8,180	8,780	18,700	380,000 ^r	6,970	21,400

^rRevised. -- Zero.

¹Data are rounded to no more than three significant digits; may not add to totals shown.

²Harmonized Tariff Schedule of the United States (HTS) codes 7404.00.0010 and 7404.00.0015 (no. 1), 7404.00.0025 (no. 2), and 7404.00.0030 (other).

³HTS codes for segregated alloyed copper scrap are 7404.00.0041, 7404.00.0046, 7404.00.0051, 7404.00.0056, 7404.00.0061, 7404.00.0066, and 7404.00.0075. HTS codes for unsegregated alloyed copper scrap are 7404.00.0085 and 7404.00.0095.

Source: U.S. Census Bureau.