

# Mineral Industry Surveys

**For information, contact:**

Amy C. Tolcin, Zinc Commodity Specialist  
 National Minerals Information Center  
 U.S. Geological Survey  
 989 National Center  
 Reston, VA 20192  
 Telephone: (703) 648-4940 Fax: (703) 648-7757  
 Email: atolcin@usgs.gov

Hodan A. Fatah (Data)  
 Telephone: (703) 648-4971  
 Fax: (703) 648-7975  
 Email: hfatah@usgs.gov

**Internet:** <https://www.usgs.gov/centers/nmic>

## ZINC IN NOVEMBER 2020

Domestic mine production (recoverable) of zinc in November 2020 was 59,500 metric tons (t) (tables 1, 2). Average daily mine production in November was 1,980 t, slightly more than that in the previous month and 18% more than that in November 2019 (fig. 1). Recoverable zinc mine production during the first 11 months of 2020 was 620,000 t, 8% less than that during the same period in 2019.

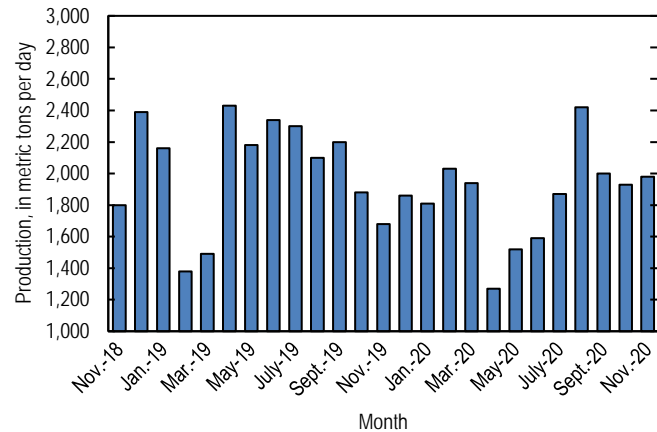


Figure 1. Average daily domestic zinc mine production (recoverable) from November 2018 through November 2020.

### Stocks and Prices

Global London Metal Exchange Ltd. (LME) stocks of Special High Grade (SHG) zinc were 220,500 t at the end of November 2020, essentially unchanged from stocks at the end of October but more than three times stocks at the end of November 2019 (fig. 2, table 8). Reported off-warrant stocks of SHG zinc in LME-approved warehouses at the end of November 2020 were about 97,300 t, 17% more than reported stocks at the end of October. Approximately 60% of reported off-warrant stocks were held in New Orleans, LA (London Metal Exchange Ltd., 2020a, b).

The monthly average S&P Global Platts Metals Week North American SHG zinc price in November 2020 was \$1.29 per pound, 9% more than that in the previous month and 8% more than that in November 2019. The November 2020 average LME cash price for SHG zinc was \$2,669.69 per metric ton (\$1.21 per pound), 9% more than that in the previous month and 10% more than that in November 2019 (fig. 3, table 7).

The North American premium to the LME cash price in November 2020 averaged 8.0 cents per pound, unchanged since September 2020 but 9% less than that in November 2019 (fig. 3, table 7).

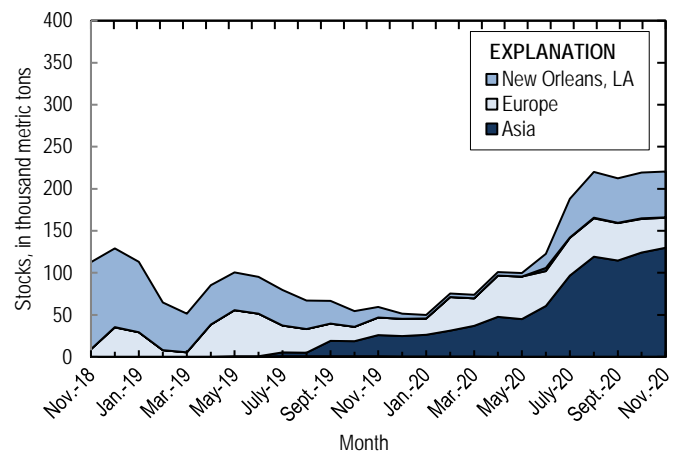


Figure 2. Global LME stocks of Special High Grade zinc, monthend, from November 2018 through November 2020. Source: London Metal Exchange Ltd.

### References Cited

London Metal Exchange Ltd., 2020a, Off warrant stock reporting October 2020: London, United Kingdom, London Metal Exchange Ltd. (Accessed December 7, 2020, via <https://www.lme.com/en-GB/Market-Data/Reports-and-data/Warehouse-and-stocks-reports/Off-warrant-stock-reporting>.)  
 London Metal Exchange Ltd., 2020b, Off warrant stock reporting November 2020: London, United Kingdom, London Metal Exchange Ltd. (Accessed January 22, 2021, via <https://www.lme.com/en-GB/Market-Data/Reports-and-data/Warehouse-and-stocks-reports/Off-warrant-stock-reporting>.)

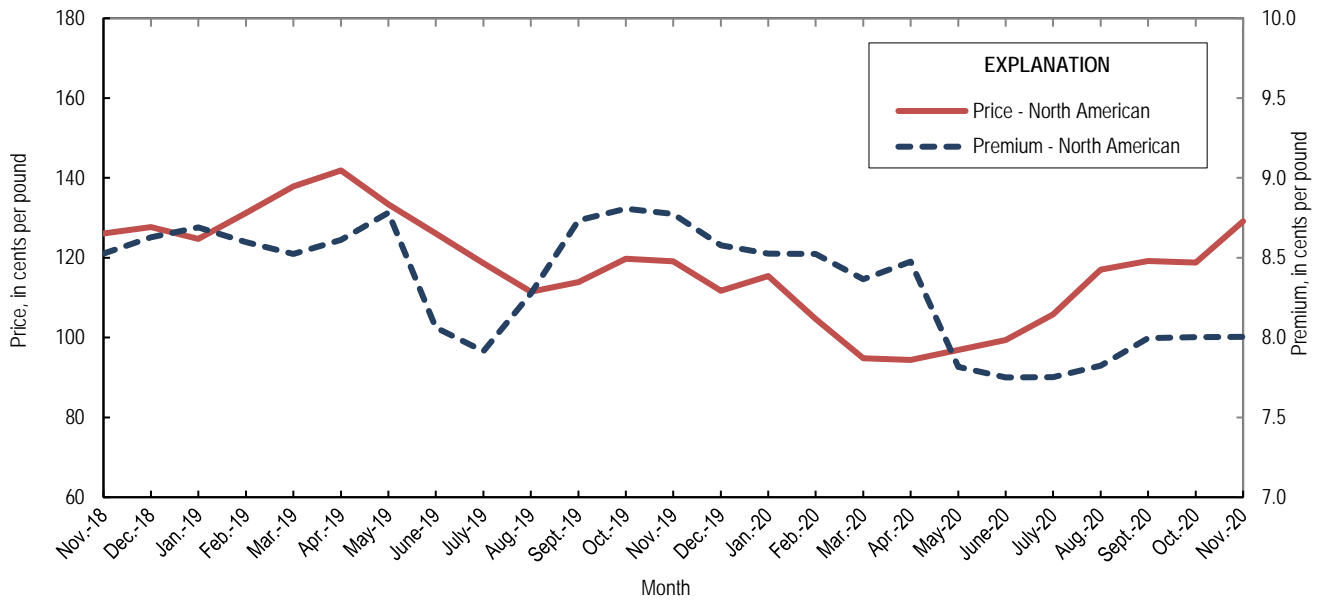


Figure 3. Average monthly North American price and premium for Special High Grade zinc from November 2018 through November 2020. Source: S&P Global Platts Metals Week.

List services and web feed subscribers are the first to receive notification of USGS minerals information publications and data releases. For information on how to subscribe, go to <https://www.usgs.gov/centers/nmic/minerals-information-publication-list-services>.

TABLE 1  
SALIENT ZINC STATISTICS<sup>1</sup>

(Metric tons, unless otherwise specified)

	2019	2020		
	January– December <sup>p</sup>	October	November	January– November <sup>2</sup>
<b>Production:</b>				
Mine, zinc content of concentrate <sup>3</sup>	753,000	61,700	61,200	639,000
Mine, recoverable zinc <sup>3</sup>	731,000	59,900	59,500	620,000
Smelter, refined zinc <sup>e</sup>	115,000	15,000	15,000	139,000
Consumption of refined zinc, apparent <sup>4</sup>	939,000	73,700	69,100	786,000
<b>Imports for consumption:</b>				
Ore and concentrate (zinc content)	10	--	--	3,170
Refined zinc	830,000	59,000	54,300	649,000
<b>Exports:</b>				
Ore and concentrate (zinc content)	796,000	62,100	57,700	538,000
Refined zinc	5,170	298	184	2,280
<b>Price:<sup>5</sup></b>				
London Metal Exchange cash, average, dollars per metric ton	2,548.63	2,441.55	2,669.69	2,217.34
S&P Global Platts Metals cents per pound	124.13	118.75	129.10	108.67

<sup>e</sup>Estimated. <sup>p</sup>Preliminary. -- Zero.

<sup>1</sup>Data are rounded to no more than three significant digits, except prices; may not add to totals shown.

<sup>2</sup>May include revisions to previously published data.

<sup>3</sup>Reported zinc content in both zinc and lead concentrates.

<sup>4</sup>Smelter production plus imports for consumption minus domestic exports.

<sup>5</sup>Special High Grade Zinc.

TABLE 2  
MINE AND SMELTER PRODUCTION OF ZINC  
IN THE UNITED STATES<sup>1</sup>

(Metric tons)

Period	Mine <sup>2</sup>		Smelter <sup>c</sup>
	Zinc content	Recoverable	
2019:			
November	52,000	50,500	9,900
December	59,300	57,600	9,900
January–December	753,000	731,000	115,000
2020:			
January	57,700	56,000	10,000
February	60,600	58,800	10,000
March	61,900	60,100	11,000
April	39,300	38,200	11,000
May	48,500	47,000	12,000
June	49,100	47,600	12,000
July	59,700	57,900	14,000
August	77,300	75,000	14,000
September	61,700	59,900	15,000
October	61,700	59,900	15,000
November	61,200	59,500	15,000
January–November	639,000	620,000	139,000

<sup>c</sup>Estimated.

<sup>1</sup>Data are rounded to no more than three significant digits; may not add to totals shown.

<sup>2</sup>Includes the zinc content in both lead and zinc concentrates.

TABLE 3  
U.S. IMPORTS FOR CONSUMPTION OF ZINC<sup>1</sup>

(Gross weight, unless otherwise specified)

Material	2019		2020			
	Quantity (metric tons)	Value (thousands)	November		January–November <sup>2</sup>	
			Quantity (metric tons)	Value (thousands)	Quantity (metric tons)	Value (thousands)
Ore and concentrate (zinc content)	10	\$7	--	--	3,170	\$4,400
Unwrought:						
Refined zinc	830,000	2,190,000	54,300	\$139,000	649,000	1,470,000
Zinc alloys	1,530	4,480	317	854	931	2,540
Wrought:						
Bars, rods, profiles, wire	3,020	10,600	290	929	3,000	9,240
Plates, sheets, strip, foil	3,010	12,700	142	553	2,400	10,700
Ash and residues:						
Hard zinc spelter	20	17	--	--	--	--
Zinc dross and skimmings	3,730	5,950	221	367	3,530	5,250
Other (zinc content)	1,320	784	40	29	1,020	654
Other:						
Powders, flakes, dust	25,500	94,900	1,890	6,830	22,600	76,300
Waste and scrap	10,400	18,200	976	1,310	10,000	14,100
Chemicals:						
Lithopone	1,170	4,240	73	423	971	3,410
Zinc oxide	99,300	272,000	8,730	20,900	94,400	232,000
Zinc chloride	196	1,450	4	38	270	1,570
Zinc sulfate	72,100	64,700	7,250	5,350	85,600	65,400
Zinc sulfide	956	3,590	86	469	885	4,370

-- Zero.

<sup>1</sup>Data are rounded to no more than three significant digits.

<sup>2</sup>May include revisions to previously published data.

Source: U.S. Census Bureau.

TABLE 4  
U.S. IMPORTS OF ZINC, BY TYPE OF MATERIAL AND COUNTRY OR LOCALITY<sup>1</sup>

(Metric tons, gross weight, unless otherwise specified)

Material and country or locality	General imports			Imports for consumption		
	2019	2020		2019	2020	
		November	January–November <sup>2</sup>		November	January–November <sup>2</sup>
<b>Ore and concentrate (zinc content):</b>						
Canada	10	--	--	10	--	--
China	--	--	1,060	--	--	1,060
Peru	--	--	2,100	--	--	2,100
<b>Total</b>	<b>10</b>	<b>--</b>	<b>3,170</b>	<b>10</b>	<b>--</b>	<b>3,170</b>
<b>Refined zinc:</b>						
Australia	--	--	33,000	--	1,000	1,000
Belgium	--	--	24,100	393	--	1
Brazil	11,300	--	21,900	11,300	--	13,400
Canada	517,000	39,500	451,000	517,000	39,500	451,000
China	49	--	108	5,770	--	108
Korea, Republic of	8,110	--	39,100	8,340	499	21,100
Mexico	142,000	9,010	121,000	142,000	9,010	121,000
Netherlands	--	--	1,470	3,420	--	--
Peru	59,300	4,240	41,700	59,300	4,240	41,700
Poland	268	--	100	268	--	100
Spain	14,500	--	20,000	81,900	--	123
Taiwan	62	--	24	62	--	24
Other	6	--	--	6	--	--
<b>Total</b>	<b>753,000</b>	<b>52,800</b>	<b>753,000</b>	<b>830,000</b>	<b>54,300</b>	<b>649,000</b>
<b>Oxide:</b>						
Australia	394	47	538	394	47	538
Belgium	30	--	1	30	--	1
Brazil	5	--	19	5	--	19
Canada	44,100	3,780	39,900	44,100	3,780	39,900
China	187	17	162	187	17	162
France	18	--	12	18	--	12
Germany	1,300	18	1,060	1,300	18	1,060
Greece	300	--	738	300	--	738
India	74	--	38	74	--	38
Indonesia	103	--	--	103	--	--
Italy	42	--	22	42	--	22
Japan	927	37	816	927	37	816
Korea, Republic of	96	(3)	60	96	(3)	60
Mexico	39,000	3,740	39,000	39,000	3,740	39,000
Netherlands	9,270	923	8,480	9,270	923	8,480
Peru	2,990	161	3,520	2,990	161	3,520
United Kingdom	425	--	28	425	--	28
Other	46	--	51	46	--	51
<b>Total</b>	<b>99,300</b>	<b>8,730</b>	<b>94,400</b>	<b>99,300</b>	<b>8,730</b>	<b>94,400</b>

-- Zero.

<sup>1</sup>Data are rounded to no more than three significant digits; may not add to totals shown.

<sup>2</sup>May include revisions to previously published data.

<sup>3</sup>Less than ½ unit.

Source: U.S. Census Bureau.

TABLE 5  
U.S. EXPORTS OF ZINC<sup>1</sup>

(Gross weight, unless otherwise specified)

Material	2019		2020			
	Quantity (metric tons)	Value (thousands)	November		January–November <sup>2</sup>	
			Quantity (metric tons)	Value (thousands)	Quantity (metric tons)	Value (thousands)
Ore and concentrate (zinc content)	796,000	\$1,320,000	57,700	\$81,500	538,000	\$786,000
Unwrought:						
Refined zinc	5,170	14,300	184	524	2,280	6,210
Zinc alloys	21,600	63,500	2,230	6,200	18,400	49,300
Wrought:						
Bars, rods, profiles, wire	10,200	30,300	864	2,570	8,530	26,000
Plates, sheets, strip, foil	6,190	24,500	610	2,320	4,880	18,200
Ash and residues:						
Hard zinc spelter	9,370	16,700	792	1,150	8,350	11,300
Other (zinc content)	24,900	38,600	2,180	3,200	20,700	27,300
Other:						
Powders, flakes, dust	13,400	48,500	1,680	9,420	12,600	45,900
Waste and scrap	30,800	40,200	2,440	2,740	22,300	26,200
Chemicals:						
Lithopone	170	905	81	296	454	1,720
Zinc oxide	15,100	30,900	4,380	6,060	39,200	48,700
Zinc chloride	185	316	14	26	413	741
Zinc sulfate	486	648	16	14	505	499
Zinc sulfide	2,070	17,300	140	1,310	1,280	11,900

<sup>1</sup>Data are rounded to no more than three significant digits.

<sup>2</sup>May include revisions to previously published data.

Source: U.S. Census Bureau.

TABLE 6  
U.S. EXPORTS OF ZINC, BY TYPE OF MATERIAL AND COUNTRY OR LOCALITY<sup>1</sup>

(Metric tons, gross weight, unless otherwise specified)

Material and country or locality	2019	2020	
		November	January-November <sup>2</sup>
<b>Ore and concentrate (zinc content):</b>			
Australia	64,100	--	63,300
Belgium	107,000	--	40,000
Brazil	7,030	--	--
Canada	268,000	50,000	276,000
Finland	29,400	--	15,700
Germany	29,700	--	21,100
Italy	33,800	--	5,290
Japan	38,500	--	38,500
Korea, Republic of	69,200	5,020	59,200
Mexico	10,700	--	2
Peru	5,000	--	120
Spain	116,000	2,730	18,400
Switzerland	17,500	--	--
Other	83	4	28
<b>Total</b>	<b>796,000</b>	<b>57,700</b>	<b>538,000</b>
<b>Refined zinc:</b>			
Australia	46	16	34
Canada	928	97	857
China	502	--	--
Colombia	98	--	124
Guatemala	17	--	10
India	132	--	287
Indonesia	375	--	--
Malaysia	625	--	--
Mexico	1,800	72	754
Panama	39	--	50
South Africa	438	--	--
Vietnam	40	--	164
Other	135	--	2
<b>Total</b>	<b>5,170</b>	<b>184</b>	<b>2,280</b>
<b>Oxide:</b>			
Australia	127	--	503
Belgium	90	13	61
Brazil	453	37	280
Canada	4,860	300	3,120
China	457	27	227
France	14	(3)	232
Germany	131	10	141
Guyana	124	--	38
India	825	24	373
Mexico	7,140	3,890	33,100
Poland	177	16	112
Thailand	123	--	15
United Kingdom	127	--	216
Other	506	62	731
<b>Total</b>	<b>15,100</b>	<b>4,380</b>	<b>39,200</b>

-- Zero.

<sup>1</sup>Data are rounded to no more than three significant digits; may not add to totals shown.

<sup>2</sup>May include revisions to previously published data.

<sup>3</sup>Less than ½ unit.

Source: U.S. Census Bureau.



TABLE 7  
AVERAGE PRICES FOR SPECIAL HIGH GRADE ZINC

Period	North American		London Metal Exchange	
	Premium	Price <sup>1</sup>	cash <sup>2</sup>	
	¢/lb.	¢/lb.	¢/lb.	\$/t
2019:				
November	8.8	119.11	110.33	2,432.43
December	8.6	111.70	103.12	2,273.40
January–December	8.5	124.13	115.60	2,548.63
2020:				
January	8.5	115.42	106.89	2,356.60
February	8.5	104.68	96.16	2,119.90
March	8.4	94.79	86.42	1,905.33
April	8.5	94.39	85.91	1,894.08
May	7.8	96.87	89.06	1,963.40
June	7.8	99.40	91.65	2,020.61
July	7.8	105.83	98.08	2,162.24
August	7.8	117.00	109.17	2,406.83
September	8.0	119.15	111.15	2,450.50
October	8.0	118.75	110.75	2,441.55
November	8.0	129.10	121.10	2,669.69
January–November	8.1	108.67	100.58	2,217.34

<sup>1</sup>Platts Metals Week North American price. Based on the London Metal Exchange cash price plus the North American premium.

<sup>2</sup>Average of the cash buyer price and the cash seller and settlement price.

Source: S&P Global Platts Metals Week

TABLE 8  
LONDON METAL EXCHANGE (LME) STOCKS OF SPECIAL HIGH GRADE ZINC, END OF PERIOD

(Metric tons)

Period	United States			Asia	Europe	Other	Total LME
	Baltimore, MD	New Orleans, LA	Total				
2019:							
November	--	12,475	12,475	25,175	20,975	575	59,200
December	--	6,125	6,125	24,350	20,350	375	51,200
2020:							
January	--	4,150	4,150	25,950	19,300	375	49,775
February	--	4,100	4,100	30,750	40,000	350	75,200
March	--	4,000	4,000	36,650	32,950	200	73,800
April	--	4,200	4,200	47,325	49,225	100	100,850
May	--	4,175	4,175	44,700	50,675	25	99,575
June	3,825	16,675	20,500	60,425	41,625	--	122,550
July	475	46,075	46,550	96,525	44,900	--	187,975
August	475	54,650	55,125	119,300	45,700	--	220,125
September	475	52,950	53,425	114,575	44,575	--	212,575
October	475	54,500	54,975	124,200	40,025	--	219,200
November	475	54,500	54,975	129,700	35,825	--	220,500

-- Zero.

Source: London Metal Exchange, Ltd.