

# Mineral Industry Surveys

## For information, contact:

Daniel M. Flanagan, Copper Commodity Specialist  
 National Minerals Information Center  
 U.S. Geological Survey  
 989 National Center  
 Reston, VA 20192  
 Telephone: (703) 648-7726, Fax: (703) 648-7757  
 Email: dflanagan@usgs.gov

Sheema Merchant (Data)  
 Telephone: (703) 659-9944  
 Fax: (703) 648-7975  
 Email: smerchant@usgs.gov

Internet: <https://www.usgs.gov/centers/nmic>

## COPPER IN NOVEMBER 2020

In November 2020, domestic mine production of recoverable copper was 95,100 metric tons (t). The average daily mine production was 3,170 t, an increase of 3% from that in October and a slight decrease compared with that in November 2019 (fig. 1). Year-to-date recoverable mine output through November 2020 was 1.10 million metric tons, 5% less than that in the same period in 2019 (table 2).

disruptions from March to October, Rio Tinto Kennecott's (South Jordan, UT) smelter near Salt Lake City, UT, was fully operational for the entire month of November (Rio Tinto plc, 2021, p. 12).

Total U.S. refinery production was 80,400 t in November 2020; data for electrolytic and electrowon output, as well as refined production from scrap, are reported in table 4. Average daily total refinery production was 2,680 t, an increase of 3% compared with that in October (fig. 1). Year-to-date refinery output was 824,000 t (table 4).

### Prices

The average November 2020 COMEX spot copper price was \$3.20 per pound, an increase of 5% from \$3.06 per pound in October and 21% higher than \$2.65 per pound in November 2019. The COMEX price rose for the seventh consecutive month and was 39% greater than the year-to-date monthly minimum of \$2.31 per pound in April (fig. 2, table 11). The average U.S. dealers buying price of number 2 copper scrap in November 2020 was \$2.30 per pound, an increase of 3% compared with \$2.23 per pound in October (fig. 2, table 12).

### Stocks

Refined copper stocks in the United States totaled 129,000 t at the end of November 2020, a decrease of 8% from those in October and 6% higher than those in November 2019. London Metal Exchange Ltd. stocks in U.S. warehouses fell by 38%, and COMEX and wire-rod mill stocks each rose slightly from those at the end of October (fig. 3, table 10).

### Industry News

**Chile.**—The Corporación Nacional del Cobre de Chile (Codelco), a state-owned company, announced on November 12 that open-pit operations at the Chuquicamata Mine would be extended for an additional year. Codelco had originally planned to halt surface mining in December and to process the remaining ore stockpiles in 2021 and 2022. In 2019, Chuquicamata was the ninth-ranked global copper mine and produced 385,000 t of copper, equivalent to nearly 2% of global mine output.

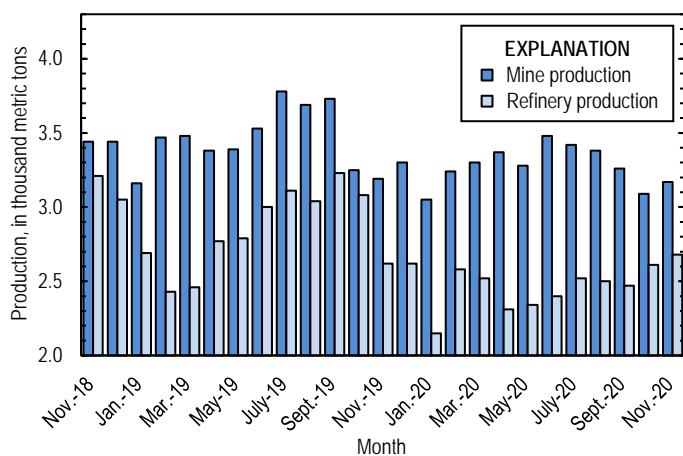


Figure 1. Average daily U.S. copper mine (recoverable) and refinery (primary and secondary) production from November 2018 through November 2020. Refinery production in November and December 2019 were withheld to avoid disclosing company proprietary data; the values shown reflect the daily average for cumulative production over this period rather than production in each month.

Owing to temporary closures of ASARCO LLC's (Tucson, AZ) smelter in Arizona and electrolytic refinery in Texas, smelter and electrolytic refinery production reported to the U.S. Geological Survey in November 2020 were withheld to avoid disclosing company proprietary data. Smelter and electrolytic refinery output in tables 3 and 4 are estimates based on information in quarterly company reports.

Estimated smelter production in the United States was 30,000 t in November 2020, and the estimated average daily output was 1,000 t. Year-to-date estimated smelter production through November 2020 was 285,000 t (table 3). Following multiple

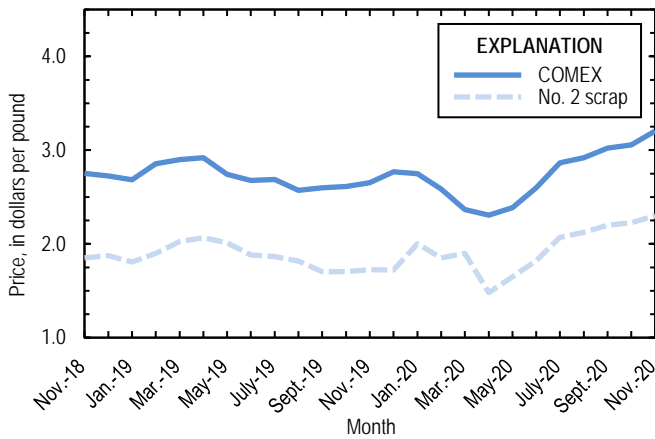


Figure 2. Monthly average COMEX copper price and no. 2 copper scrap dealers buying price from November 2018 through November 2020. As of January 2020, no. 2 prices were available only for the entire United States, whereas no. 2 prices were available only for individual domestic markets prior to January 2020. Prices shown prior to January 2020 are for New York dealers no. 2 scrap. Sources: Fastmarkets-AMM, Platts Metals Week.

Underground operations at Chuquicamata will continue for approximately 40 years after surface mining ceases (Corporación Nacional del Cobre de Chile, 2020a, p. 24; 2020b; Rostás, 2019).

**China.**—On November 1, updated standards for imports of high-grade copper scrap into China took effect, with minimum copper contents ranging from 94% to 99.9%, depending on the scrap type. The Government of China will ban imports of material that it classifies as solid waste, including some types of copper scrap, beginning on January 1, 2021. Imports of scrap that contain no less than the minimum copper quantities will no longer be considered solid waste when the new regulations become effective (CRU International Ltd., 2020; Mir, 2020; Staub, 2020).

**References Cited**

Corporación Nacional del Cobre de Chile, 2020a, ¡Nos transformamos hoy por el futuro de Chile!—Memoria anual 2019 [Transforming today for the future of Chile!—Annual report 2019]: Santiago, Chile, Corporación Nacional del Cobre de Chile, 289 p. (Accessed November 13, 2020, at [https://www.codelco.com/memoria2019/site/docs/20200414/20200414114454/memoria\\_2019\\_codelco.pdf](https://www.codelco.com/memoria2019/site/docs/20200414/20200414114454/memoria_2019_codelco.pdf).)

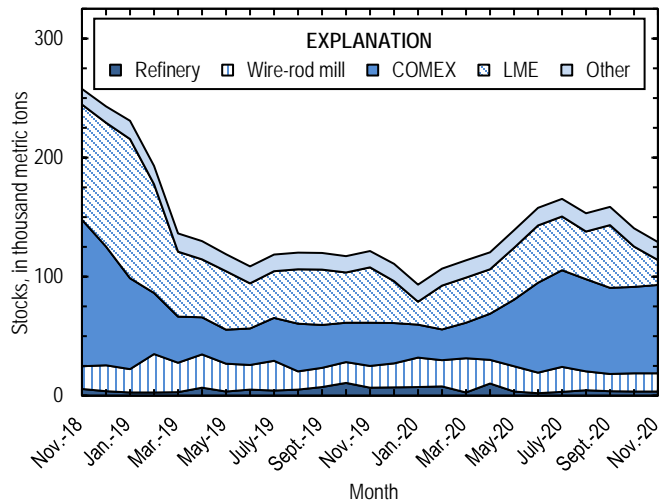


Figure 3. Monthly domestic refined copper stocks, by type, from November 2018 through November 2020. Sources: Fastmarkets-AMM, London Metal Exchange Ltd., and U.S. Geological Survey.

Corporación Nacional del Cobre de Chile, 2020b, Rajo de Chuquicamata entenderá su fase de explotación por un año más [Chuquicamata pit operations will be extended for one more year]: Santiago, Chile, Corporación Nacional del Cobre de Chile press release, November 12. (Accessed November 13, 2020, at [https://www.codelco.com/rajo-de-chuquicamata-extendera-su-fase-de-explotacion-por-un-ano-mas/prontus\\_codelco/2020-11-12/135757.html](https://www.codelco.com/rajo-de-chuquicamata-extendera-su-fase-de-explotacion-por-un-ano-mas/prontus_codelco/2020-11-12/135757.html).)

CRU International Ltd., 2020, CRU copper China fortnightly: London, United Kingdom, CRU International Ltd., October 30, 5 p. (Accessed November 6, 2020, via <http://www.crugroup.com/>.)

Mir, Fawad, 2020, China updates copper, aluminum scrap metal import standards: S&P Global Market Intelligence, January 20. (Accessed January 24, 2020, via <http://www.snl.com/>.)

Rio Tinto plc, 2021, Rio Tinto releases fourth quarter production results: London, United Kingdom, Rio Tinto plc news release, January 19, 29 p. (Accessed February 1, 2021, at <https://www.riotinto.com/-/media/Content/Documents/Invest/Financial-news-and-performance/Production/RT-Fourth-Quarter-Operations-Review-2020-pdf.pdf>.)

Rostás, Renato, 2019, Codelco starts underground phase at Cu mine: Fastmarkets-AMM, August 15. (Accessed August 23, 2019, via <https://www.amm.com/>.)

Staub, Colin, 2020, China confirms expanded import ban starting Jan. 1: Resource Recycling, December 1. (Accessed December 18, 2020, at <https://resource-recycling.com/recycling/2020/12/01/china-confirms-expanded-import-ban-starting-jan-1/>.)

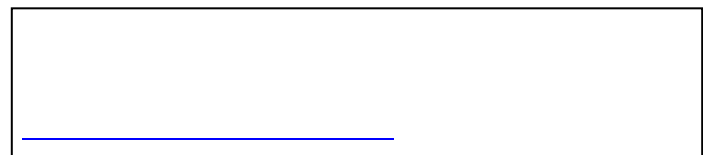


TABLE 1  
SALIENT STATISTICS OF THE COPPER INDUSTRY IN THE UNITED STATES<sup>1</sup>

(Metric tons of copper content, unless otherwise specified)

	Source table <sup>2</sup>	2019 <sup>p</sup>	2020			January– November
			September	October	November	
<b>Production:</b>						
<b>Primary:</b>						
Mine, recoverable	(2)	1,260,000	97,700	95,600 <sup>r</sup>	95,100	1,100,000
Smelter	(3)	464,000	25,000 <sup>e</sup>	30,000 <sup>e</sup>	30,000 <sup>e</sup>	285,000 <sup>e</sup>
<b>Refinery:</b>						
Electrolytic, domestic and foreign	(4)	457,000	25,000 <sup>e</sup>	30,000 <sup>e</sup>	30,000 <sup>e</sup>	285,000 <sup>e</sup>
Electrowon	(4)	527,000	45,700	47,600	47,100	499,000
Total	(4)	985,000	70,700	77,600	77,100	784,000
<b>Secondary recoverable copper:<sup>3</sup></b>						
Refineries	(5)	44,400	3,490	3,220	3,290	39,900
Ingot makers <sup>4</sup>	(5)	57,900	4,820	4,820	4,820	53,100
Brass and wire-rod mills	(5)	653,000	54,000	57,200 <sup>r</sup>	55,900	611,000
Foundries, etc. <sup>4</sup>	(5)	36,700	3,060	3,060	3,060	33,600
<b>Consumption:</b>						
Apparent, primary refined and copper from old scrap	(8)	1,810,000	113,000	163,000	151,000	1,490,000
Reported, refined copper	(7)	1,830,000	145,000	147,000	145,000	1,610,000
Purchased copper-base scrap (gross weight)	(9)	923,000	79,900	79,200 <sup>r</sup>	77,900	862,000
<b>Stocks at end of period:</b>						
Total refined	(10)	111,000	159,000	140,000	129,000	129,000
Blister and anode	(10)	16,400	13,500	15,200	13,800	13,800
Price, U.S. producers cathode (cents per pound) <sup>5</sup>	(11)	279.596	309.052	312.495	327.338	280.042
<b>Imports:<sup>6</sup></b>						
Ore and concentrates	(13)	27,000	595	864	--	2,170
Refined	(13)	663,000	39,900	57,300	53,300	619,000
<b>Exports:<sup>6</sup></b>						
Ore and concentrates	(14)	363,000	33,100	30,500	35,400	357,000
Refined	(14)	125,000	4,570	2,930	3,090	36,300

<sup>e</sup>Estimated. <sup>p</sup>Preliminary. <sup>r</sup>Revised. --Zero.

<sup>1</sup>Data are rounded to no more than three significant digits, except prices; may not add to totals shown.

<sup>2</sup>Numbers in parentheses refer to the tables where these data are located.

<sup>3</sup>Copper recovered from copper-base scrap only.

<sup>4</sup>Estimated based on the monthly average of 2018 annual data.

<sup>5</sup>Source: S&P Global Platts Metals Week.

<sup>6</sup>Source: U.S. Census Bureau.

TABLE 2  
MINE PRODUCTION OF RECOVERABLE COPPER IN THE UNITED STATES<sup>1</sup>

(Metric tons)

Period	Recoverable copper			Contained copper		
	Arizona	Others <sup>2</sup>	Total	Electrowon	Concentrates <sup>3</sup>	Total
2019: <sup>p</sup>						
January–November	787,000	368,000	1,160,000	484,000	696,000	1,180,000
November	66,000	29,700	95,700	41,100	56,700	97,800
December	71,900	30,500	102,000	43,200	61,400	105,000
January–December	859,000	398,000	1,260,000	527,000	758,000	1,290,000
2020:						
January	65,800	28,800	94,600	33,300	63,700	97,000
February	65,400	28,600	94,000	41,000	55,100	96,100
March	73,800	28,400	102,000	44,900	59,600	104,000
April	76,400	24,700	101,000	44,600	58,800	103,000
May	75,500	26,200	102,000	48,200	55,700	104,000
June	77,700	26,800	105,000	48,200	58,600	107,000
July	79,300	26,700	106,000	49,500	58,900	108,000
August	78,800	25,800	105,000	49,000	57,900	107,000
September	72,400	25,300	97,700	45,700	54,000	99,800
October	70,100 <sup>r</sup>	25,500 <sup>r</sup>	95,600 <sup>r</sup>	47,600	50,000 <sup>r</sup>	97,600 <sup>r</sup>
November	69,200	25,800	95,100	47,100	49,800	97,000
January–November	804,000	293,000	1,100,000	499,000	622,000	1,120,000

<sup>p</sup>Preliminary. <sup>r</sup>Revised.

<sup>1</sup>Data are rounded to no more than three significant digits; may not add to totals shown.

<sup>2</sup>Includes production from Michigan, Missouri, Montana, Nevada, New Mexico, and Utah.

<sup>3</sup>Includes copper content of precipitates and other metal concentrates.

TABLE 3  
COPPER PRODUCED AT SMELTERS IN  
THE UNITED STATES<sup>1,2</sup>

(Metric tons, copper content)

Period	Anode production
2019: <sup>p</sup>	
January–November	W
November	W
December	W
January–December	464,000
2020: <sup>e,3</sup>	
January	30,000
February	30,000
March	30,000
April	20,000
May	20,000
June	20,000
July	25,000
August	25,000
September	25,000
October	30,000
November	30,000
January–November	285,000

<sup>e</sup>Estimated. <sup>p</sup>Preliminary. W Withheld to avoid disclosing company proprietary data.

<sup>1</sup>Data are rounded to no more than three significant digits; may not add to totals shown.

<sup>2</sup>Includes blister and copper anode from primary or secondary sources.

<sup>3</sup>To avoid disclosing company proprietary data, monthly smelter production data in 2020 are estimates based on information in quarterly public company reports and do not reflect actual production reported to the U.S. Geological Survey.

TABLE 4  
U.S. PRODUCTION OF REFINED COPPER, BY SOURCE AND METHOD OF RECOVERY<sup>1</sup>

(Metric tons)

Period	Primary materials			Scrap	Total refined
	Electrolytically refined <sup>2</sup>	Electrowon	Total		
2019: <sup>p</sup>					
January–November	W	484,000	W	41,100	W
November	W	41,100	W	3,240	W
December	W	43,200	W	3,240	W
January–December	457,000	527,000	985,000	44,400	1,030,000
2020:					
January	30,000 <sup>e,3</sup>	33,300	63,300	3,260	66,600
February	30,000 <sup>e,3</sup>	41,000	71,000	3,820	74,800
March	30,000 <sup>e,3</sup>	44,900	74,900	3,220	78,100
April	20,000 <sup>e,3</sup>	44,600	64,600	4,530	69,100
May	20,000 <sup>e,3</sup>	48,200	68,200	4,380	72,600
June	20,000 <sup>e,3</sup>	48,200	68,200	3,620	71,800
July	25,000 <sup>e,3</sup>	49,500	74,500	3,720	78,200
August	25,000 <sup>e,3</sup>	49,000	74,000	3,380	77,400
September	25,000 <sup>e,3</sup>	45,700	70,700	3,490	74,200
October	30,000 <sup>e,3</sup>	47,600	77,600	3,220	80,800
November	30,000 <sup>e,3</sup>	47,100	77,100	3,290	80,400
January–November	285,000 <sup>e,3</sup>	499,000	784,000	39,900	824,000

<sup>e</sup>Estimated. <sup>p</sup>Preliminary. W Withheld to avoid disclosing company proprietary data.

<sup>1</sup>Data are rounded to no more than three significant digits; may not add to totals shown.

<sup>2</sup>From domestic and foreign source materials.

<sup>3</sup>To avoid disclosing company proprietary data, monthly electrolytically refined production data in 2020 are estimates based on information in quarterly public company reports and do not reflect actual production reported to the U.S. Geological Survey.

TABLE 5  
COPPER RECOVERABLE IN UNALLOYED AND ALLOYED FORM FROM PURCHASED COPPER-BASE SCRAP  
IN THE UNITED STATES<sup>1</sup>

(Metric tons, copper content)

Period	Refineries <sup>2</sup>		Ingot makers <sup>3</sup>		Brass and wire-rod mills		Foundries, etc. <sup>3</sup>		Total <sup>4</sup>
	New scrap <sup>e</sup>	Old scrap	New scrap	Old scrap	New scrap	Old scrap	New scrap	Old scrap	
2019: <sup>p</sup>									
January–November	18,400	22,700	8,450	44,600	565,000	34,200	23,600	10,000	727,000
November	1,680	1,560	768	4,060	51,700	2,560	2,150	913	65,400
December	1,680	1,560	768	4,060	51,800	2,290	2,150	913	65,200
January–December	20,100	24,200	9,220	48,700	617,000	36,500	25,800	11,000	792,000
2020:									
January	1,680	1,590	768	4,060	53,400	3,760	2,150	913	68,300
February	1,680	2,140	768	4,060	52,400	3,580	2,150	913	67,700
March	1,680	1,540	768	4,060	52,100	3,370	2,150	913	66,600
April	1,680	2,850	768	4,060	51,800	2,950	2,150	913	67,100
May	1,680	2,700	768	4,060	51,300	2,600	2,150	913	66,200
June	1,680	1,940	768	4,060	51,800 <sup>r</sup>	3,030	2,150	913	66,400 <sup>r</sup>
July	1,680	2,040	768	4,060	53,400	3,290	2,150	913	68,300
August	1,680	1,700	768	4,060	52,200	3,120	2,150	913	66,600
September	1,680	1,810	768	4,060	50,700	3,300	2,150	913	65,400
October	1,680	1,540	768	4,060	53,600 <sup>r</sup>	3,540	2,150	913	68,300 <sup>r</sup>
November	1,680	1,620	768	4,060	52,900	3,000	2,150	913	67,100
January–November	18,400	21,500	8,450	44,600	576,000	35,500	23,600	10,000	738,000

<sup>e</sup>Estimated. <sup>p</sup>Preliminary. <sup>r</sup>Revised.

<sup>1</sup>Data are rounded to no more than three significant digits; may not add to totals shown.

<sup>2</sup>Electrolytically refined and fire refined from scrap based on source of material at smelter or refinery level.

<sup>3</sup>Monthly data estimated based on the monthly average of 2018 annual data.

<sup>4</sup>Does not include an estimate, based on reported 2018 annual data, of 3,380 tons per month from new scrap and 2,710 tons per month from old scrap of copper recovered from scrap other than copper-base.

TABLE 6  
U.S. PRODUCTION, SHIPMENTS, AND STOCKS OF BRASS AND WIRE-ROD SEMIFABRICATES<sup>1</sup>

(Metric tons, gross weight)

Period	Production		Shipments		Stocks, end of period	
	Brass mills	Wire-rod mills	Brass mills	Wire-rod mills	Brass mills	Wire-rod mills
2019: <sup>p</sup>						
January–November	807,000	1,210,000	808,000	1,230,000	29,400	24,600
November	73,200	101,000	73,000	100,000	29,400	24,600
December	72,700	93,500	72,200	94,100	29,900	24,000
January–December	880,000	1,300,000	880,000	1,320,000	29,900	24,000
2020:						
January	73,700	110,000	74,200	106,000	29,400	27,800
February	73,900	110,000	73,600	106,000	29,700	31,800
March	74,500	108,000	74,100	112,000	30,100	27,800
April	72,500	94,600	73,500	96,200	29,000	26,100
May	73,400	95,300	73,400	91,400	29,000	30,000
June	73,700	89,400	73,600	96,100	29,200	23,400
July	73,500	108,000	73,300	104,000	29,300	27,000
August	73,700	104,000	73,600	111,000	29,400	20,000
September	73,800	105,000	73,700	107,000	29,500	18,600
October	74,400	108,000	74,900	110,000	29,000	16,400
November	73,600	107,000	73,600	109,000	29,000	16,800
January–November	811,000	1,140,000	811,000	1,150,000	29,000	16,800

<sup>p</sup>Preliminary.

<sup>1</sup>Data are rounded to no more than three significant digits; may not add to totals shown.



TABLE 7  
U.S. CONSUMPTION OF REFINED COPPER<sup>1</sup>

(Metric tons)

Period	Brass mills	Wire-rod mills	Other plants <sup>2</sup>	Total
2019: <sup>p</sup>				
January–November	380,000	1,250,000	59,900	1,690,000
November	34,100	112,000	5,450	151,000
December	33,100	104,000	5,450	142,000
January–December	413,000	1,360,000	65,400	1,830,000
2020:				
January	34,500	120,000	5,450	160,000
February	33,600	117,000	5,450	156,000
March	33,600	104,000	5,450	143,000
April	34,500	107,000	5,450	146,000
May	34,100	102,000	5,450	142,000
June	34,700	95,300	5,450	135,000
July	34,300	107,000	5,450	147,000
August	34,700	103,000	5,450	143,000
September	34,600	105,000	5,450	145,000
October	34,600	106,000	5,450	147,000
November	34,600	105,000	5,450	145,000
January–November	378,000	1,170,000	59,900	1,610,000

<sup>p</sup>Preliminary.

<sup>1</sup>Data are rounded to no more than three significant digits; may not add to totals shown.

<sup>2</sup>Monthly consumption data by ingot makers, chemical plants, foundries, and miscellaneous manufacturers are estimated based on the monthly average of 2018 annual data.

TABLE 8  
U.S. APPARENT CONSUMPTION OF COPPER<sup>1</sup>

(Metric tons)

Period	Primary refined copper production	Copper in old scrap <sup>2</sup>	Refined imports for consumption <sup>3</sup>	Refined exports <sup>3</sup>	Stock change during period	Apparent consumption
2019: <sup>p</sup>						
January–November	W	141,000	603,000	118,000	-121,000	W
November	W	11,800	49,000	9,510	4,330	W
December	W	11,500	59,500	7,830	-10,900	W
January–December	985,000	153,000	663,000	125,000	-132,000	1,810,000
2020:						
January	63,300	13,000	62,300	4,170	-17,300	152,000
February	71,000	13,400	34,400	2,470	13,400	103,000
March	74,900	12,600	70,500	4,000	6,860	147,000
April	64,600	13,500	74,300	1,580	6,790	144,000
May	68,200	13,000	66,200	540	18,600	128,000
June	68,200	12,700	63,300	1,220	18,900	124,000
July	74,500	13,000	37,300	5,300	7,430	112,000
August	74,000	12,500	59,800	6,470	-12,100	152,000
September	70,700	12,800	39,900	4,570	5,410	113,000
October	77,600	12,800	57,300	2,930	-18,100	163,000
November	77,100	12,300	53,300	3,090	-11,400	151,000
January–November	784,000	141,000	619,000	36,300	18,500	1,490,000

<sup>p</sup>Preliminary. W Withheld to avoid disclosing company proprietary data.

<sup>1</sup>Data are rounded to no more than three significant digits; may not add to totals shown.

<sup>2</sup>Copper recovered from old scrap and converted to refined metal and alloys. Includes reported monthly production of copper from old scrap of copper-base, an estimate for annual reporters, and a monthly average of copper from non-copper-base materials based on 2018 annual

<sup>3</sup>Source: U.S. Census Bureau.

TABLE 9  
U.S. CONSUMPTION OF PURCHASED COPPER-BASE SCRAP<sup>1</sup>

(Metric tons, gross weight)

Period	Smelters and refineries		Ingot makers <sup>2</sup>		Brass and wire-rod mills <sup>3</sup>		Foundries, etc. <sup>2</sup>		Total scrap used
	New scrap <sup>c</sup>	Old scrap	New scrap	Old scrap	New scrap	Old scrap	New scrap	Old scrap	
2019: <sup>p</sup>									
January–November	19,000	23,500	22,600	52,700	654,000	36,300	28,200	11,100	847,000
November	1,730	1,610	2,050	4,790	59,800	2,760	2,570	1,010	76,400
December	1,730	1,610	2,050	4,790	59,900	2,460	2,570	1,010	76,100
January–December	20,700	25,100	24,600	57,500	714,000	38,800	30,800	12,100	923,000
2020:									
January	1,730	1,660	2,050	4,790	61,600	3,960	2,570	1,010	79,400
February	1,730	2,180	2,050	4,790	60,500	3,790	2,570	1,010	78,700
March	1,730	1,590	2,050	4,790	60,300	3,590	2,570	1,010	77,600
April	1,730	2,940	2,050	4,790	59,900	3,150	2,570	1,010	78,100
May	1,730	2,790	2,050	4,790	59,500	2,760	2,570	1,010	77,200
June	1,730	2,000	2,050	4,790	59,900	3,160	2,570	1,010	77,200
July	1,730	2,100	2,050	4,790	61,500	3,340	2,570	1,010	79,100
August	1,730	1,750	2,050	4,790	60,800	3,200	2,570	1,010	77,900
September	1,730	1,870	2,050	4,790	62,400	3,410	2,570	1,010	79,900
October	1,730	1,590	2,050	4,790	61,700 <sup>r</sup>	3,710	2,570	1,010	79,200 <sup>r</sup>
November	1,730	1,670	2,050	4,790	60,900	3,130	2,570	1,010	77,900
January–November	19,000	22,100	22,600	52,700	669,000	37,200	28,200	11,100	862,000

<sup>c</sup>Estimated. <sup>p</sup>Preliminary. <sup>r</sup>Revised.

<sup>1</sup>Data are rounded to no more than three significant digits; may not add to totals shown.

<sup>2</sup>Monthly data estimated based on the monthly average of 2018 annual data.

<sup>3</sup>Consumption at brass and wire-rod mills assumed equal to receipts.

TABLE 10  
COPPER STOCKS IN THE UNITED STATES AT END OF PERIOD<sup>1</sup>

(Metric tons)

Period	Blister and anode <sup>2</sup>	Refined copper					LME <sup>4</sup>	Total refined
		Refineries	Wire-rod mills	Brass mills	Other <sup>3</sup>	Comex		
<b>2019:<sup>P</sup></b>								
November	10,200	6,650	18,200	6,580	7,070	36,400	46,600	121,000
December	16,400	7,010	20,000	7,520	7,070	34,100	35,000	111,000
<b>2020:</b>								
January	9,590	7,200	24,800	7,330	7,070	27,600	19,300	93,300
February	17,900	7,810	21,900	7,250	7,070	26,000	36,700	107,000
March	7,940	2,750	28,600	7,290	7,070	29,800	38,100	114,000
April	7,430	10,300	19,900	7,210	7,070	38,700	37,200	120,000
May	11,900	3,550	21,200	7,730	7,070	55,900	43,500	139,000
June	11,000	2,070	17,200	7,900	7,070	75,600	48,000	158,000
July	11,300	3,090	21,200	7,770	7,070	81,000	45,200	165,000
August	15,700	4,490	15,900	8,210	7,070	77,400	40,200	153,000
September	13,500	3,730	14,500	8,200	7,070	72,400	52,700	159,000
October	15,200	3,460	15,300	8,170	7,070	72,500	34,000	140,000
November	13,800	3,420	15,500	8,100	7,070	74,000	20,900	129,000

<sup>P</sup>Preliminary.

<sup>1</sup>Data are rounded to no more than three significant digits; may not add to totals shown.

<sup>2</sup>Copper content.

<sup>3</sup>Monthly estimates based on 2018 annual data, comprising stocks at ingot makers, chemical plants, foundries, and miscellaneous manufacturers.

<sup>4</sup>London Metal Exchange Ltd., U.S. warehouses.

TABLE 11  
 AVERAGE PRICE OF COPPER IN THE UNITED STATES  
 AND ON THE LONDON METAL EXCHANGE

(Cents per pound)

Period	U.S. producers cathode <sup>1</sup>	Comex first position <sup>2</sup>	LME cash price Grade A
2019:			
November	272.588	265.463	265.774
December	284.342	277.029	274.970
Year	279.596	272.267	272.364
2020:			
January	282.467	274.967	274.362
February	265.695	258.382	257.907
March	243.464	236.714	234.886
April	236.881	230.631	228.985
May	245.090	238.715	237.402
June	266.305	259.805	260.470
July	293.300	286.600	288.202
August	298.377	291.752	294.685
September	309.052	302.302	304.470
October	312.495	305.695	304.033
November	327.338	320.338	320.392
January–November	280.042	273.264	273.254

<sup>1</sup>Sum of "Comex high grade first position" and "NY dealer premium cathode."

<sup>2</sup>Listed as "Comex high grade first position."

Source: S&P Global Platts Metals Week.

TABLE 12  
AVERAGE BUYING PRICES FOR COPPER SCRAP IN THE UNITED STATES

(Cents per pound)

Period	Brass mills No. 1 scrap	Refiners No. 2 scrap	Dealers (United States) <sup>1</sup>	
			No. 2 scrap	Red brass turnings and borings
2019:				
November	253.84	224.84	172.50	127.53
December	264.76	236.19	172.12	127.00
Year	262.76	233.19	185.19	136.53
2020:				
January	262.29	234.76	200.00	139.00
February	244.87	218.26	185.00	115.00
March	223.75	197.73	190.00	139.00
April	219.33	196.05	148.00	125.00
May	230.18	208.95	165.00	111.00
June	253.82	232.41	182.09	120.55
July	279.55	258.32	207.09	130.00
August	282.05	258.79	212.52	124.76
September	291.05	262.19	220.00	128.86
October	291.93	261.84	222.73	130.00
November	306.26	277.53	230.00	139.47
January–November	262.28	236.98	196.58	127.51

<sup>1</sup>As of January 2020, domestic dealers prices were available only for the entire United States, whereas dealers prices were available only for individual domestic markets prior to January 2020. Dealers prices in 2019 are for New York, and dealers prices in 2020 are for the entire United States.

Source: Fastmarkets-AMM.

TABLE 13  
U.S. IMPORTS FOR CONSUMPTION OF COPPER (UNMANUFACTURED), BY CLASS<sup>1</sup>

(Metric tons, copper content)

Country or locality	Ore and concentrates <sup>2</sup>			Matte, ash, and precipitates <sup>3</sup>			Blister and anodes <sup>4</sup>			Refined <sup>5</sup>		
	2020			2020			2020			2020		
	2019	November	January–November	2019	November	January–November	2019	November	January–November	2019	November	January–November
Belgium	--	--	--	228	132	354	--	--	--	2,300	--	--
Bolivia	--	--	--	13	--	--	--	--	--	1,510	192	456
Canada	(6)	--	2,170	451	110	379	(6)	--	(6)	138,000	10,800	141,000
Chile	--	--	--	--	--	--	--	--	--	422,000	36,900	374,000
Finland	--	--	--	--	--	--	191	32	275	38	--	--
Germany	--	--	--	(6)	--	--	--	--	(6)	2,010	148	1,770
Japan	--	--	--	295	44	126	(6)	--	(6)	2,540	147	2,010
Mexico	27,000	--	--	138	(6)	(6)	(6)	(6)	(6)	82,300	5,040	86,900
Netherlands	--	--	--	120	8	8	4	--	(6)	(6)	--	(6)
Peru	(6)	--	--	--	--	--	--	--	--	10,000	--	11,300
Saudi Arabia	--	--	--	98	--	--	--	--	--	--	--	--
Spain	--	--	--	540	--	49	1	--	--	(6)	--	654
Tunisia	--	--	--	--	--	--	35	--	--	--	--	--
Zambia	--	--	--	--	--	--	--	--	--	689	--	--
Other	27	--	--	76	2	9	5	(6)	5	1,160	51	694
Total	27,000	--	2,170	1,960	297	926	236	32	281	663,000	53,300	619,000

-- Zero.

<sup>1</sup>Data are rounded to no more than three significant digits; may not add to totals shown.

<sup>2</sup>Harmonized Tariff Schedule of the United States (HTS) code 2603.00.0010. Includes copper ore and concentrates only; excludes copper contained in ore and concentrates of other metals.

<sup>3</sup>HTS codes 2620.30.0010 and 7401.00.0000. Includes copper matte, ash, and precipitates only; excludes the copper content of mattes and ashes of other metals.

<sup>4</sup>HTS code 7402.00.0000.

<sup>5</sup>HTS codes 7403.11.0000, 7403.12.0000, 7403.13.0000, and 7403.19.0000.

<sup>6</sup>Less than ½ unit.

Source: U.S. Census Bureau.

TABLE 14  
U.S. EXPORTS OF COPPER (UNMANUFACTURED), BY CLASS<sup>1</sup>

(Metric tons, copper content)

Country or locality	Ore and concentrates <sup>2</sup>			Matte, ash, and precipitates <sup>3</sup>			Blister and anodes <sup>4</sup>			Refined <sup>5</sup>		
	2020			2020			2020			2020		
	2019	November	January-- November	2019	November	January-- November	2019	November	January-- November	2019	November	January-- November
Austria	--	--	--	--	--	--	127	--	--	--	--	--
Belgium	161	40	212	3,290	318	5,700	359	32	155	129	--	64
Brazil	5,370	--	--	--	--	--	39	4	20	1	--	4
Bulgaria	15,900	--	4,350	--	(6)	(6)	--	--	--	--	--	--
Canada	14,400	3,540	31,900	14,700	1,960	12,600	2,600	354	1,560	32,100	958	10,200
China	7	15,600	46,000	97	16	47	200	21	127	13	1	91
Germany	--	--	--	597	9	269	286	7	128	1	--	22
Hong Kong	--	--	9	19	--	--	279	--	86	20	--	18
India	--	--	20	--	--	19	259	45	209	36	--	--
Italy	--	--	--	--	--	--	208	--	134	26	--	86
Japan	27,400	1,190	12,400	48	79	174	26	--	24	11	(6)	3
Korea, Republic of	15,500	1,350	7,660	74	--	1	1,520	96	1,260	682	3	1,160
Malaysia	35	--	--	--	--	3	188	19	198	1	--	--
Mexico	248,000	13,700	234,000	1,210	--	2,720	32	477	574	92,100	2,120	24,500
Philippines	11,900	--	6,250	--	--	--	56	--	10	2	--	--
Slovakia	--	--	--	1,080	78	955	--	--	--	--	--	--
Spain	22,700	--	8,990	259	255	1,720	61	--	35	--	--	--
Sweden	--	--	--	--	--	--	463	--	135	(6)	--	--
Other	1,950	23	4,590	763	21	428	564	40	798	181	9	169
Total	363,000	35,400	357,000	22,200	2,740	24,600	7,270	1,090	5,450	125,000	3,090	36,300

-- Zero.

<sup>1</sup>Data are rounded to no more than three significant digits; may not add to totals shown.

<sup>2</sup>Harmonized Tariff Schedule of the United States (HTS) code 2603.00.0010. Includes copper ore and concentrates only; excludes copper contained in ore and concentrates of other metals.

<sup>3</sup>HTS codes 2620.30.0000, 7401.00.0010, and 7401.00.0050. Includes copper matte, ash, and precipitates only; excludes the copper content of mattes and ashes of other metals.

<sup>4</sup>HTS code 7402.00.0000.

<sup>5</sup>HTS codes 7403.11.0000, 7403.12.0000, 7403.13.0000, and 7403.19.0000.

<sup>6</sup>Less than ½ unit.

Source: U.S. Census Bureau.



TABLE 15  
U.S. IMPORTS FOR CONSUMPTION OF COPPER SCRAP<sup>1</sup>

(Metric tons, gross weight)

Country or locality	Unalloyed <sup>2</sup>			Alloyed <sup>3</sup>		
	2020			2020		
	2019	November	January– November	2019	November	January– November
Bahamas	--	--	--	736	40	594
Canada	16,700	1,300	13,700	49,900	4,060	37,800
Chile	--	--	17	1,300	--	60
Colombia	251	--	60	1,050	58	667
Costa Rica	473	81	563	1,160	145	822
Dominican Republic	610	90	815	2,120	82	999
El Salvador	--	--	--	695	44	264
Germany	188	--	168	111	2	108
Guatemala	17	--	--	603	31	269
Honduras	63	10	53	679	49	763
Japan	1,040	--	--	--	--	--
Mexico	11,500	1,180	8,260	42,100	3,830	32,900
Pakistan	151	--	--	--	--	--
Panama	736	32	621	483	33	297
Suriname	124	--	43	100	2	50
Venezuela	28	--	--	554	9	147
Vietnam	114	4	107	17	--	20
Other	519	61	828	3,850	220	2,120
Total	32,600	2,760	25,200	105,000	8,610	77,900

-- Zero.

<sup>1</sup>Data are rounded to no more than three significant digits; may not add to totals shown.

<sup>2</sup>Harmonized Tariff Schedule of the United States (HTS) codes 7404.00.3020 and 7404.00.6020.

<sup>3</sup>HTS codes 7404.00.3045, 7404.00.3055, 7404.00.3065, 7404.00.3090, 7404.00.6045, 7404.00.6055, 7404.00.6065, and 7404.00.6090.

Source: U.S. Census Bureau.

TABLE 16  
U.S. EXPORTS OF COPPER SCRAP<sup>1</sup>

(Metric tons, gross weight)

Country or locality	Unalloyed <sup>2</sup>							Alloyed <sup>3</sup>					
	2020							2020					
	2019	No. 1		No. 2		Other		2019	Segregated		Unsegregated		
		November	January– November	November	January– November	November	January– November		November	January– November	November	January– November	
Belgium	23,600	584	5,930	1,160	11,800	115	1,380	14,300	133	1,000	1,090	9,590	
Canada	49,200	--	--	--	--	4,280	48,100	42,000	--	--	3,090	28,600	
China	74,800	1,990	24,900	1,030	17,500	2,170	27,800	13,100	383	10,900	1,650	21,000	
Germany	29,400	1,070	13,200	417	3,570	369	4,270	14,300	88	751	1,510	13,800	
Greece	8,180	672	6,360	223	2,980	662	1,790	973	--	555	20	842	
Hong Kong	19,900	113	5,870	5	406	--	1,240	30,500	--	1,220	113	6,460	
India	14,400	359	2,830	339	3,570	307	2,850	45,500	1,910	19,400	1,420	13,300	
Japan	22,600	570	3,720	976	8,110	569	3,410	20,300	139	2,040	677	10,700	
Korea, Republic of	46,900	1,820	22,600	706	7,220	1,200	12,200	25,000	404	5,680	1,050	11,900	
Malaysia	65,300	594	3,940	2,600	13,900	5,020	30,400	156,000	2,270	18,900	9,990	93,300	
Netherlands	4,300	388	2,500	141	1,160	88	1,430	1,010	--	37	--	562	
Pakistan	882	--	26	26	671	--	--	19,800	39	184	1,830	13,200	
Poland	5,450	9	2,030	235	1,580	--	1,120	45	--	19	1,120	5,700	
Spain	1,510	41	857	54	1,530	277	1,510	8,510	158	2,850	354	4,390	
Taiwan	20,300	526	5,700	43	3,430	564	6,700	20,300	98	2,420	278	13,700	
Thailand	4,120	19	1,160	5	749	364	2,310	16,300	203	3,080	1,320	15,500	
Other	31,200	859	12,700	2,120	14,000	435	6,710	21,300	195	3,890	1,610	15,200	
Total	422,000	9,610	114,000	10,100	92,100	16,400	153,000	450,000	6,020	72,900	27,100	278,000	

-- Zero.

<sup>1</sup>Data are rounded to no more than three significant digits; may not add to totals shown.

<sup>2</sup>Harmonized Tariff Schedule of the United States (HTS) codes 7404.00.0010 and 7404.00.0015 (no. 1), 7404.00.0025 (no. 2), and 7404.00.0030 (other).

<sup>3</sup>HTS codes for segregated alloyed copper scrap are 7404.00.0041, 7404.00.0046, 7404.00.0051, 7404.00.0056, 7404.00.0061, 7404.00.0066, and 7404.00.0075. HTS codes for unsegregated alloyed copper scrap are 7404.00.0085 and 7404.00.0095.

Source: U.S. Census Bureau.