

Mineral Industry Surveys

For information, contact:

Daniel M. Flanagan, Copper Commodity Specialist
 National Minerals Information Center
 U.S. Geological Survey
 989 National Center
 Reston, VA 20192
 Telephone: (703) 648-7726, Fax: (703) 648-7757
 Email: dflanagan@usgs.gov

Sheema Merchant (Data)
 Telephone: (703) 659-9944
 Fax: (703) 648-7975
 Email: smerchant@usgs.gov

Internet: <https://www.usgs.gov/centers/nmic>

COPPER IN OCTOBER 2020

In October 2020, domestic mine production of recoverable copper was 96,300 metric tons (t). The average daily mine production was 3,110 t, a decrease of 5% from that in September and that in October 2019 (fig. 1). Year-to-date recoverable mine output through October 2020 was 1.00 million metric tons, 5% less than that through the same period in 2019 (table 2).

smelter production through October 2020 was 255,000 t, a decline of 36% relative to the same period in 2019 (table 3). Following planned major maintenance in May and June, the restart of Rio Tinto Kennecott's (South Jordan, UT) smelter near Salt Lake City, UT, was delayed owing to unexpected complications. The company had also recently completed an unexpected rebuild of the flash converting furnace, which was damaged by a magnitude 5.7 earthquake on March 18. Rio Tinto expected the facility to resume full operations by the end of October (Rio Tinto plc, 2020a, p. 2, 8; 2020b, p. 9).

Total U.S. refinery production was 80,800 t in October 2020; data for electrolytic and electrowon output, as well as refined production from scrap, are reported in table 4. Average daily total refinery production was 2,610 t, an increase of 5% compared with that in September and a decrease of 15% from that in October 2019 (fig. 1). Year-to-date refinery output was 744,000 t, 15% less than that through October 2019 (table 4).

Prices

The average October 2020 COMEX spot copper price was \$3.06 per pound, a slight increase from \$3.02 per pound in September and 17% higher than \$2.61 per pound in October 2019. The COMEX price rose for the sixth consecutive month and was 33% greater than the year-to-date monthly minimum of \$2.31 per pound in April (fig. 2, table 11). The average U.S. dealers buying price of number 2 copper scrap in October 2020 was \$2.23 per pound, a slight increase compared with \$2.20 per pound in September (fig. 2, table 12).

Stocks

Refined copper stocks in the United States totaled 140,000 t at the end of October 2020, a decrease of 11% from those in September and 20% higher than those in October 2019. London Metal Exchange Ltd. stocks in U.S. warehouses fell by 36%, COMEX stocks were essentially unchanged, and wire-rod mill stocks rose by 6% from those at the end of September (fig. 3, table 10).

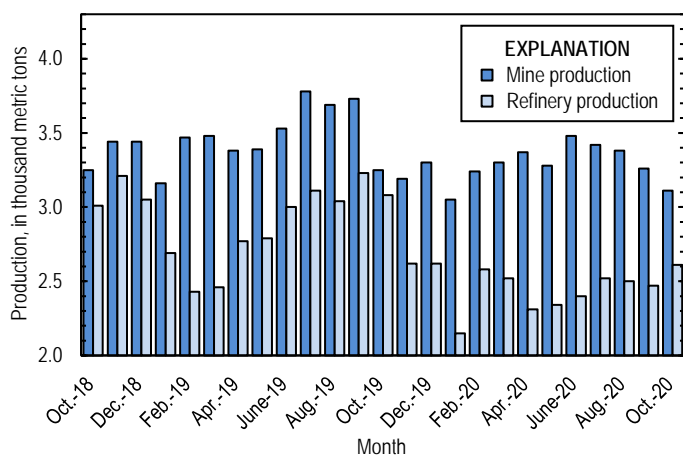


Figure 1. Average daily U.S. copper mine (recoverable) and refinery (primary and secondary) production from October 2018 through October 2020. Refinery production in November and December 2019 were withheld to avoid disclosing company proprietary data; the values shown reflect the daily average for cumulative production over this period rather than production in each month.

Owing to temporary closures of ASARCO LLC's (Tucson, AZ) smelter in Arizona and electrolytic refinery in Texas as a result of a worker strike, smelter and electrolytic refinery production reported to the U.S. Geological Survey in October 2020 were withheld to avoid disclosing company proprietary data. Smelter and electrolytic refinery output in tables 3 and 4 are estimates based on information in quarterly company reports.

Estimated smelter production in the United States was 30,000 t in October 2020. The estimated average daily output was 968 t, 31% lower than that in October 2019. Year-to-date estimated

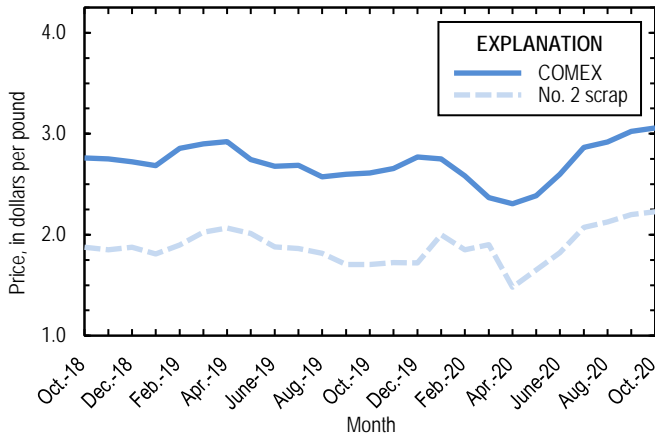


Figure 2. Monthly average COMEX copper price and no. 2 copper scrap dealers buying price from October 2018 through October 2020. As of January 2020, no. 2 prices were available only for the entire United States, whereas no. 2 prices were available only for individual domestic markets prior to January 2020. Prices shown prior to January 2020 are for New York dealers no. 2 scrap. Sources: Fastmarkets-AMM, S&P Global Platts Metals Week.

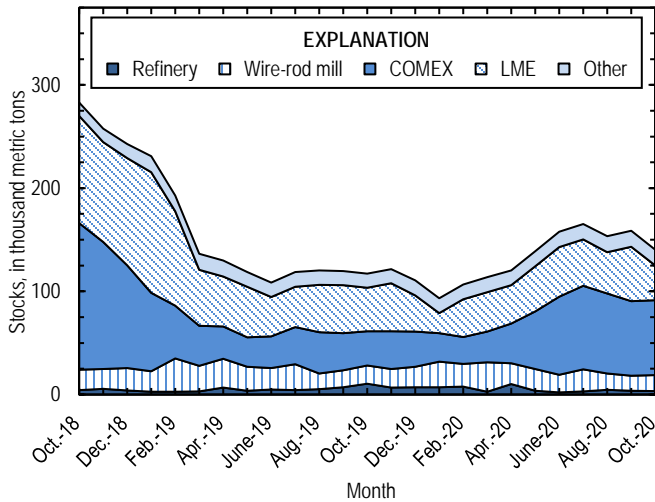


Figure 3. Monthly domestic refined copper stocks, by type, from October 2018 through October 2020. Sources: Fastmarkets-AMM, London Metal Exchange Ltd., and U.S. Geological Survey.

References Cited

- Rio Tinto plc, 2020a, Rio Tinto releases second quarter production results: London, United Kingdom, Rio Tinto plc news release, July 17, 24 p. (Accessed September 14, 2020, at <https://www.riotinto.com/-/media/Content/Documents/Invest/Financial-news-and-performance/Production/RT-Second-Quarter-Operations-Review-2020-pdf.pdf?rev=0f6cf4aac41a4591a5a63ba6c5390e0f>.)
- Rio Tinto plc, 2020b, Rio Tinto releases third quarter production results: London, United Kingdom, Rio Tinto plc news release, October 16, 25 p. (Accessed October 19, 2020, at <https://www.riotinto.com/-/media/Content/Documents/Invest/Financial-news-and-performance/Production/RT-Third-Quarter-Operations-Review-2020-pdf.pdf?rev=30a9ec7ca2e64201aca48f9faa4cb106>.)

List services and web feed subscribers are the first to receive notification of USGS minerals information publications and data releases. For information on how to subscribe, go to <https://www.usgs.gov/centers/nmic>.

TABLE 1
SALIENT STATISTICS OF THE COPPER INDUSTRY IN THE UNITED STATES¹

(Metric tons of copper content, unless otherwise specified)

	Source table ²	2019 ^p	2020			
			August	September	October	January– October
Production:						
Primary:						
Mine, recoverable	(2)	1,260,000	105,000	97,700 ^r	96,300	1,000,000
Smelter	(3)	464,000	25,000 ^e	25,000 ^e	30,000 ^e	255,000 ^e
Refinery:						
Electrolytic, domestic and foreign	(4)	457,000	25,000 ^e	25,000 ^e	30,000 ^e	255,000 ^e
Electrowon	(4)	527,000	49,000	45,700	47,600	452,000
Total	(4)	985,000	74,000	70,700	77,600	707,000
Secondary recoverable copper:³						
Refineries	(5)	44,400	3,380	3,490	3,220	36,600
Ingot makers ⁴	(5)	57,900	4,820	4,820	4,820	48,200
Brass and wire-rod mills	(5)	653,000	55,300	54,000	54,500	553,000
Foundries, etc. ⁴	(5)	36,700	3,060	3,060	3,060	30,600
Consumption:						
Apparent, primary refined and copper from old scrap	(8)	1,810,000	152,000	113,000 ^r	163,000	1,340,000
Reported, refined copper	(7)	1,830,000	143,000	145,000 ^r	147,000	1,460,000
Purchased copper-base scrap (gross weight)	(9)	923,000	77,900	79,900	80,200	785,000
Stocks at end of period:						
Total refined	(10)	111,000	153,000	159,000 ^r	140,000	140,000
Blister and anode	(10)	16,400	15,700	13,500 ^r	15,200	15,200
Price, U.S. producers cathode (cents per pound) ⁵	(11)	279.596	298.377	309.052	312.495	275.313
Imports:⁶						
Ore and concentrates	(13)	27,000	653	595	864	2,170
Refined	(13)	663,000	59,800	39,900	57,300	565,000
Exports:⁶						
Ore and concentrates	(14)	363,000	35,500	33,100	30,500	321,000
Refined	(14)	125,000	6,470	4,570	2,930	33,200

^eEstimated. ^pPreliminary. ^rRevised.

¹Data are rounded to no more than three significant digits, except prices; may not add to totals shown.

²Numbers in parentheses refer to the tables where these data are located.

³Copper recovered from copper-base scrap only.

⁴Estimated based on the monthly average of 2018 annual data.

⁵Source: S&P Global Platts Metals Week.

⁶Source: U.S. Census Bureau.

TABLE 2
MINE PRODUCTION OF RECOVERABLE COPPER IN THE UNITED STATES¹

(Metric tons)

Period	Recoverable copper			Contained copper		
	Arizona	Others ²	Total	Electrowon	Concentrates ³	Total
2019: ^p						
January–October	721,000	338,000	1,060,000	443,000	640,000	1,080,000
October	72,300	28,500	101,000	45,800	57,000	103,000
November	66,000	29,700	95,700	41,100	56,700	97,800
December	71,900	30,500	102,000	43,200	61,400	105,000
January–December	859,000	398,000	1,260,000	527,000	758,000	1,290,000
2020:						
January	65,800	28,800	94,600	33,300	63,700	97,000
February	65,400	28,600	94,000	41,000	55,100	96,100
March	73,800	28,400	102,000	44,900	59,600	104,000
April	76,400	24,700	101,000	44,600	58,800	103,000
May	75,500	26,200	102,000	48,200	55,700	104,000
June	77,700	26,800	105,000	48,200	58,600	107,000
July	79,300	26,700	106,000	49,500	58,900	108,000
August	78,800	25,800 ^r	105,000	49,000	57,900 ^r	107,000 ^r
September	72,400	25,300 ^r	97,700 ^r	45,700	54,000 ^r	99,800 ^r
October	70,500	25,800	96,300	47,600	50,700	98,200
January–October	736,000	267,000	1,000,000	452,000	573,000	1,020,000

^pPreliminary. ^rRevised.

¹Data are rounded to no more than three significant digits; may not add to totals shown.

²Includes production from Michigan, Missouri, Montana, Nevada, New Mexico, and Utah.

³Includes copper content of precipitates and other metal concentrates.

TABLE 3
COPPER PRODUCED AT SMELTERS IN
THE UNITED STATES^{1,2}

(Metric tons, copper content)

Period	Anode production
2019: ^p	
January–October	399,000
October	43,800
November	W
December	W
January–December	464,000
2020: ^{e,3}	
January	30,000
February	30,000
March	30,000
April	20,000
May	20,000
June	20,000
July	25,000
August	25,000
September	25,000
October	30,000
January–October	255,000

^eEstimated. ^pPreliminary. W Withheld to avoid disclosing company proprietary data.

¹Data are rounded to no more than three significant digits; may not add to totals shown.

²Includes blister and copper anode from primary or secondary sources.

³To avoid disclosing company proprietary data, monthly smelter production data in 2020 are estimates based on information in quarterly public company reports and do not reflect actual production reported to the U.S. Geological Survey.

TABLE 4
U.S. PRODUCTION OF REFINED COPPER, BY SOURCE AND METHOD OF RECOVERY¹

(Metric tons)

Period	Primary materials			Scrap	Total refined
	Electrolytically refined ²	Electrowon	Total		
2019: ^p					
January–October	389,000	443,000	832,000	37,900	870,000
October	46,500	45,800	92,300	3,220	95,500
November	W	41,100	W	3,240	W
December	W	43,200	W	3,240	W
January–December	457,000	527,000	985,000	44,400	1,030,000
2020:					
January	30,000 ^{e,3}	33,300	63,300	3,260	66,600
February	30,000 ^{e,3}	41,000	71,000	3,820	74,800
March	30,000 ^{e,3}	44,900	74,900	3,220	78,100
April	20,000 ^{e,3}	44,600	64,600	4,530	69,100
May	20,000 ^{e,3}	48,200	68,200	4,380	72,600
June	20,000 ^{e,3}	48,200	68,200	3,620	71,800
July	25,000 ^{e,3}	49,500	74,500	3,720	78,200
August	25,000 ^{e,3}	49,000	74,000	3,380	77,400
September	25,000 ^{e,3}	45,700	70,700	3,490	74,200
October	30,000 ^{e,3}	47,600	77,600	3,220	80,800
January–October	255,000 ^{e,3}	452,000	707,000	36,600	744,000

^eEstimated. ^pPreliminary. W Withheld to avoid disclosing company proprietary data.

¹Data are rounded to no more than three significant digits; may not add to totals shown.

²From domestic and foreign source materials.

³To avoid disclosing company proprietary data, monthly electrolytically refined production data in 2020 are estimates based on information in quarterly public company reports and do not reflect actual production reported to the U.S. Geological Survey.

TABLE 5
COPPER RECOVERABLE IN UNALLOYED AND ALLOYED FORM FROM PURCHASED COPPER-BASE SCRAP
IN THE UNITED STATES¹

(Metric tons, copper content)

Period	Refineries ²		Ingot makers ³		Brass and wire-rod mills		Foundries, etc. ³		Total ⁴
	New scrap ^e	Old scrap	New scrap	Old scrap	New scrap	Old scrap	New scrap	Old scrap	
2019: ^p									
January–October	16,800	21,100	7,680	40,600	513,000	31,700	21,500	9,130	662,000
October	1,680	1,540	768	4,060	51,000	2,490	2,150	913	64,600
November	1,680	1,560	768	4,060	51,700	2,560	2,150	913	65,400
December	1,680	1,560	768	4,060	51,800	2,290	2,150	913	65,200
January–December	20,100	24,200	9,220	48,700	617,000	36,500	25,800	11,000	792,000
2020:									
January	1,680	1,590	768	4,060	53,400	3,760	2,150	913	68,300
February	1,680	2,140	768	4,060	52,400	3,580	2,150	913	67,700
March	1,680	1,540	768	4,060	52,100	3,370	2,150	913	66,600
April	1,680	2,850	768	4,060	51,800	2,950	2,150	913	67,100
May	1,680	2,700	768	4,060	51,300	2,600	2,150	913	66,200
June	1,680	1,940	768	4,060	51,700	3,030	2,150	913	66,300
July	1,680	2,040	768	4,060	53,400	3,290	2,150	913	68,300
August	1,680	1,700	768	4,060	52,200	3,120	2,150	913	66,600
September	1,680	1,810	768	4,060	50,700	3,300	2,150	913	65,400
October	1,680	1,540	768	4,060	51,000	3,540	2,150	913	65,700
January–October	16,800	19,900	7,680	40,600	520,000	32,500	21,500	9,130	668,000

^eEstimated. ^pPreliminary.

¹Data are rounded to no more than three significant digits; may not add to totals shown.

²Electrolytically refined and fire refined from scrap based on source of material at smelter or refinery level.

³Monthly data estimated based on the monthly average of 2018 annual data.

⁴Does not include an estimate, based on reported 2018 annual data, of 3,380 tons per month from new scrap and 2,710 tons per month from old scrap of copper recovered from scrap other than copper-base.

TABLE 6
U.S. PRODUCTION, SHIPMENTS, AND STOCKS OF BRASS AND WIRE-ROD SEMIFABRICATES¹

(Metric tons, gross weight)

Period	Production		Shipments		Stocks, end of period	
	Brass mills	Wire-rod mills	Brass mills	Wire-rod mills	Brass mills	Wire-rod mills
2019: ^p						
January–October	734,000	1,110,000	735,000	1,130,000	29,200	23,800
October	73,900	112,000	74,000	114,000	29,200	23,800
November	73,200	101,000	73,000	100,000	29,400	24,600
December	72,700	93,500	72,200	94,100	29,900	24,000
January–December	880,000	1,300,000	880,000	1,320,000	29,900	24,000
2020:						
January	73,700	110,000	74,200	106,000	29,400	27,800
February	73,900	110,000	73,600	106,000	29,700	31,800
March	74,500	108,000	74,100	112,000	30,100	27,800
April	72,500	94,600	73,500	96,200	29,000	26,100
May	73,400	95,300	73,400	91,400	29,000	30,000
June	73,700	89,400	73,600	96,100	29,200	23,400
July	73,500	108,000	73,300	104,000	29,300	27,000
August	73,700	104,000	73,600	111,000	29,400	20,000
September	73,800	105,000 ^r	73,700	107,000 ^r	29,500	18,600 ^r
October	74,400	108,000	74,900	110,000	29,000	16,400
January–October	737,000	1,030,000	738,000	1,040,000	29,000	16,400

^pPreliminary. ^rRevised.

¹Data are rounded to no more than three significant digits; may not add to totals shown.

TABLE 7
U.S. CONSUMPTION OF REFINED COPPER¹

(Metric tons)

Period	Brass mills	Wire-rod mills	Other plants ²	Total
2019: ^p				
January–October	346,000	1,140,000	54,500	1,540,000
October	34,200	118,000	5,450	158,000
November	34,100	112,000	5,450	151,000
December	33,100	104,000	5,450	142,000
January–December	413,000	1,360,000	65,400	1,830,000
2020:				
January	34,500	120,000	5,450	160,000
February	33,600	117,000	5,450	156,000
March	33,600	104,000	5,450	143,000
April	34,500	107,000	5,450	146,000
May	34,100	102,000	5,450	142,000
June	34,700	95,300	5,450	135,000
July	34,300	107,000	5,450	147,000
August	34,700	103,000	5,450	143,000
September	34,600	105,000 ^r	5,450	145,000 ^r
October	34,600	106,000	5,450	147,000
January–October	343,000	1,060,000	54,500	1,460,000

^pPreliminary. ^rRevised.

¹Data are rounded to no more than three significant digits; may not add to totals shown.

²Monthly consumption data by ingot makers, chemical plants, foundries, and miscellaneous manufacturers are estimated based on the monthly average of 2018 annual data.

TABLE 8
U.S. APPARENT CONSUMPTION OF COPPER¹

(Metric tons)

Period	Primary refined copper production	Copper in old scrap ²	Refined imports for consumption ³	Refined exports ³	Stock change during period	Apparent consumption
2019: ^p						
January–October	832,000	130,000	554,000	108,000	-126,000	1,530,000
October	92,300	11,700	66,800	8,540	-2,550	165,000
November	W	11,800	49,000	9,510	4,330	W
December	W	11,500	59,500	7,830	-10,900	W
January–December	985,000	153,000	663,000	125,000	-132,000	1,810,000
2020:						
January	63,300	13,000	62,300	4,170	-17,300	152,000
February	71,000	13,400	34,400	2,470	13,400	103,000
March	74,900	12,600	70,500	4,000	6,860	147,000
April	64,600	13,500	74,300	1,580	6,790	144,000
May	68,200	13,000	66,200	540	18,600	128,000
June	68,200	12,700	63,300	1,220	18,900	124,000
July	74,500	13,000	37,300	5,300	7,430	112,000
August	74,000	12,500	59,800	6,470	-12,100	152,000
September	70,700	12,800	39,900	4,570	5,410 ^r	113,000 ^r
October	77,600	12,800	57,300	2,930	-18,100	163,000
January–October	707,000	129,000	565,000	33,200	29,900	1,340,000

^pPreliminary. ^rRevised. W Withheld to avoid disclosing company proprietary data.

¹Data are rounded to no more than three significant digits; may not add to totals shown.

²Copper recovered from old scrap and converted to refined metal and alloys. Includes reported monthly production of copper from old scrap of copper-base, an estimate for annual reporters, and a monthly average of copper from non-copper-base materials based on 2018 annual data.

³Source: U.S. Census Bureau.

TABLE 9
U.S. CONSUMPTION OF PURCHASED COPPER-BASE SCRAP¹

(Metric tons, gross weight)

Period	Smelters and refineries		Ingot makers ²		Brass and wire-rod mills ³		Foundries, etc. ²		Total scrap used
	New scrap ^c	Old scrap	New scrap	Old scrap	New scrap	Old scrap	New scrap	Old scrap	
2019: ^p									
January–October	17,300	21,900	20,500	47,900	594,000	33,500	25,700	10,100	771,000
October	1,730	1,730	2,050	4,790	59,200	2,720	2,570	1,010	75,800
November	1,730	1,610	2,050	4,790	59,800	2,760	2,570	1,010	76,400
December	1,730	1,610	2,050	4,790	59,900	2,460	2,570	1,010	76,100
January–December	20,700	25,100	24,600	57,500	714,000	38,800	30,800	12,100	923,000
2020:									
January	1,730	1,660	2,050	4,790	61,600	3,960	2,570	1,010	79,400
February	1,730	2,180	2,050	4,790	60,500	3,790	2,570	1,010	78,700
March	1,730	1,590	2,050	4,790	60,300	3,590	2,570	1,010	77,600
April	1,730	2,940	2,050	4,790	59,900	3,150	2,570	1,010	78,100
May	1,730	2,790	2,050	4,790	59,500	2,760	2,570	1,010	77,200
June	1,730	2,000	2,050	4,790	59,900	3,160	2,570	1,010	77,200
July	1,730	2,100	2,050	4,790	61,500	3,340	2,570	1,010	79,100
August	1,730	1,750	2,050	4,790	60,800	3,200	2,570	1,010	77,900
September	1,730	1,870	2,050	4,790	62,400	3,410	2,570	1,010	79,900
October	1,730	1,590	2,050	4,790	62,800	3,710	2,570	1,010	80,200
January–October	17,300	20,500	20,500	47,900	609,000	34,100	25,700	10,100	785,000

^cEstimated. ^pPreliminary.

¹Data are rounded to no more than three significant digits; may not add to totals shown.

²Monthly data estimated based on the monthly average of 2018 annual data.

³Consumption at brass and wire-rod mills assumed equal to receipts.

TABLE 10
COPPER STOCKS IN THE UNITED STATES AT END OF PERIOD¹

(Metric tons)

Period	Blister and anode ²	Refined copper					LME ⁴	Total refined
		Refineries	Wire-rod mills	Brass mills	Other ³	Comex		
2019: ^P								
October	25,400	10,600	17,500	6,680	7,070	33,200	42,200	117,000
November	10,200	6,650	18,200	6,580	7,070	36,400	46,600	121,000
December	16,400	7,010	20,000	7,520	7,070	34,100	35,000	111,000
2020:								
January	9,590	7,200	24,800	7,330	7,070	27,600	19,300	93,300
February	17,900	7,810	21,900	7,250	7,070	26,000	36,700	107,000
March	7,940	2,750	28,600	7,290	7,070	29,800	38,100	114,000
April	7,430	10,300	19,900	7,210	7,070	38,700	37,200	120,000
May	11,900	3,550	21,200	7,730	7,070	55,900	43,500	139,000
June	11,000	2,070	17,200	7,900	7,070	75,600	48,000	158,000
July	11,300	3,090	21,200	7,770	7,070	81,000	45,200	165,000
August	15,700	4,490	15,900	8,210	7,070	77,400	40,200	153,000
September	13,500 ^r	3,730 ^r	14,500 ^r	8,200	7,070	72,400	52,700	159,000 ^r
October	15,200	3,460	15,300	8,170	7,070	72,500	34,000	140,000

^PPreliminary. ^rRevised.

¹Data are rounded to no more than three significant digits; may not add to totals shown.

²Copper content.

³Monthly estimates based on 2018 annual data, comprising stocks at ingot makers, chemical plants, foundries, and miscellaneous manufacturers.

⁴London Metal Exchange Ltd., U.S. warehouses.

TABLE 11
 AVERAGE PRICE OF COPPER IN THE UNITED STATES
 AND ON THE LONDON METAL EXCHANGE

(Cents per pound)

Period	U.S. producers cathode ¹	Comex first position ²	LME cash price Grade A
2019:			
October	268.065	261.165	260.470
November	272.588	265.463	265.774
December	284.342	277.029	274.970
Year	279.596	272.267	272.364
2020:			
January	282.467	274.967	274.362
February	265.695	258.382	257.907
March	243.464	236.714	234.886
April	236.881	230.631	228.985
May	245.090	238.715	237.402
June	266.305	259.805	260.470
July	293.300	286.600	288.202
August	298.377	291.752	294.685
September	309.052	302.302	304.470
October	312.495	305.695	304.033
January–October	275.313	268.556	268.540

¹Sum of "Comex high grade first position" and "NY dealer premium cathode."

²Listed as "Comex high grade first position."

Source: S&P Global Platts Metals Week.

TABLE 12
AVERAGE BUYING PRICES FOR COPPER SCRAP IN THE UNITED STATES

(Cents per pound)

Period	Dealers (United States) ¹			
	Brass mills No. 1 scrap	Refiners No. 2 scrap	No. 2 scrap	Red brass turnings and borings
2019:				
October	250.04	221.04	170.50	128.00
November	253.84	224.84	172.50	127.53
December	264.76	236.19	172.12	127.00
Year	262.76	233.19	185.19	136.53
2020:				
January	262.29	234.76	200.00	139.00
February	244.87	218.26	185.00	115.00
March	223.75	197.73	190.00	139.00
April	219.33	196.05	148.00	125.00
May	230.18	208.95	165.00	111.00
June	253.82	232.41	182.09	120.55
July	279.55	258.32	207.09	130.00
August	282.05	258.79	212.52	124.76
September	291.05	262.19	220.00	128.86
October	291.93	261.84	222.73	130.00
January–October	257.88	232.93	193.24	126.32

¹As of January 2020, domestic dealers prices were available only for the entire United States, whereas dealers prices were available only for individual domestic markets prior to January 2020. Dealers prices in 2019 are for New York, and dealers prices in 2020 are for the entire United States.

Source: Fastmarkets-AMM.

TABLE 13
U.S. IMPORTS FOR CONSUMPTION OF COPPER (UNMANUFACTURED), BY CLASS¹

(Metric tons, copper content)

Country or locality	Ore and concentrates ²			Matte, ash, and precipitates ³			Blister and anodes ⁴			Refined ⁵		
	2020			2020			2020			2020		
	2019	October	January–October	2019	October	January–October	2019	October	January–October	2019	October	January–October
Belgium	--	--	--	228	--	221	--	--	--	2,300	--	--
Bolivia	--	--	--	13	--	--	--	--	--	1,510	--	264
Canada	(6)	864	2,170	451	25	269	(6)	--	(6)	138,000	13,300	130,000
Chile	--	--	--	--	--	--	--	--	--	422,000	37,600	337,000
Finland	--	--	--	--	--	--	191	16	244	38	--	--
Germany	--	--	--	(6)	--	--	--	--	(6)	2,010	96	1,630
Japan	--	--	--	295	--	82	(6)	(6)	(6)	2,540	121	1,860
Mexico	27,000	--	--	138	(6)	(6)	(6)	--	--	82,300	6,170	81,800
Netherlands	--	--	--	120	--	--	4	--	(6)	(6)	--	(6)
Peru	(6)	--	--	--	--	--	--	--	--	10,000	--	11,300
Saudi Arabia	--	--	--	98	--	--	--	--	--	--	--	--
Spain	--	--	--	540	--	49	1	--	--	(6)	--	654
Tunisia	--	--	--	--	--	--	35	--	--	--	--	--
Zambia	--	--	--	--	--	--	--	--	--	689	--	--
Other	27	--	--	76	(6)	8	5	(6)	5	1,160	38	643
Total	27,000	864	2,170	1,960	26	629	236	16	249	663,000	57,300	565,000

-- Zero.

¹Data are rounded to no more than three significant digits; may not add to totals shown.

²Harmonized Tariff Schedule of the United States (HTS) code 2603.00.0010. Includes copper ore and concentrates only; excludes copper contained in ore and concentrates of other metals.

³HTS codes 2620.30.0010 and 7401.00.0000. Includes copper matte, ash, and precipitates only; excludes the copper content of mattes and ashes of other metals.

⁴HTS code 7402.00.0000.

⁵HTS codes 7403.11.0000, 7403.12.0000, 7403.13.0000, and 7403.19.0000.

⁶Less than ½ unit.

Source: U.S. Census Bureau.

TABLE 14
U.S. EXPORTS OF COPPER (UNMANUFACTURED), BY CLASS¹

(Metric tons, copper content)

Country or locality	Ore and concentrates ²			Matte, ash, and precipitates ³			Blister and anodes ⁴			Refined ⁵		
	2020			2020			2020			2020		
	2019	October	January-- October	2019	October	January-- October	2019	October	January-- October	2019	October	January-- October
Austria	--	--	--	--	--	--	127	--	--	--	--	--
Belgium	161	--	172	3,290	436	5,380	359	15	124	129	--	64
Brazil	5,370	--	--	--	--	--	39	2	16	1	--	4
Bulgaria	15,900	--	4,350	--	--	--	--	--	--	--	--	--
Canada	14,400	2,500	28,400	14,700	970	10,600	2,600	149	1,210	32,100	24	9,280
China	7	7,710	30,400	97	7	31	200	--	106	13	--	90
Germany	--	--	--	597	18	260	286	21	120	1	2	22
Hong Kong	--	--	9	19	--	--	279	11	86	20	--	18
India	--	--	20	--	--	19	259	17	164	36	--	--
Italy	--	--	--	--	--	--	208	61	134	26	--	86
Japan	27,400	--	11,200	48	36	94	26	1	24	11	--	3
Korea, Republic of	15,500	--	6,300	74	--	1	1,520	113	1,160	682	18	1,150
Malaysia	35	--	--	--	--	3	188	7	179	1	--	--
Mexico	248,000	20,300	220,000	1,210	718	2,720	32	64	97	92,100	2,880	22,400
Philippines	11,900	--	6,250	--	--	--	56	--	10	2	--	--
Slovakia	--	--	--	1,080	78	877	--	--	--	--	--	--
Spain	22,700	--	8,990	259	254	1,460	61	--	35	--	--	--
Sweden	--	--	--	--	--	--	463	--	135	(6)	--	--
Other	1,950	23	4,570	763	(6)	407	564	56	758	181	10	160
Total	363,000	30,500	321,000	22,200	2,520	21,900	7,270	514	4,360	125,000	2,930	33,200

-- Zero.

¹Data are rounded to no more than three significant digits; may not add to totals shown.

²Harmonized Tariff Schedule of the United States (HTS) code 2603.00.0010. Includes copper ore and concentrates only; excludes copper contained in ore and concentrates of other metals.

³HTS codes 2620.30.0000, 7401.00.0010, and 7401.00.0050. Includes copper matte, ash, and precipitates only; excludes the copper content of mattes and ashes of other metals.

⁴HTS code 7402.00.0000.

⁵HTS codes 7403.11.0000, 7403.12.0000, 7403.13.0000, and 7403.19.0000.

⁶Less than ½ unit.

Source: U.S. Census Bureau.

TABLE 15
U.S. IMPORTS FOR CONSUMPTION OF COPPER SCRAP¹

(Metric tons, gross weight)

Country or locality	Unalloyed ²			Alloyed ³		
	2020			2020		
	2019	October	January– October	2019	October	January– October
Bahamas	--	--	--	736	35	554
Canada	16,700	1,180	12,400	49,900	4,190	33,800
Chile	--	17	17	1,300	20	60
Colombia	251	--	60	1,050	94	609
Costa Rica	473	55	482	1,160	80	677
Dominican Republic	610	83	724	2,120	50	916
El Salvador	--	--	--	695	45	220
Germany	188	21	168	111	--	106
Guatemala	17	--	--	603	25	238
Honduras	63	2	42	679	109	714
Japan	1,040	--	--	--	--	--
Mexico	11,500	909	7,080	42,100	3,460	29,100
Pakistan	151	--	--	--	--	--
Panama	736	72	589	483	32	263
Suriname	124	13	43	100	8	48
Venezuela	28	--	--	554	28	138
Vietnam	114	12	103	17	5	20
Other	519	53	767	3,850	200	1,900
Total	32,600	2,420	22,400	105,000	8,380	69,300

-- Zero.

¹Data are rounded to no more than three significant digits; may not add to totals shown.

²Harmonized Tariff Schedule of the United States (HTS) codes 7404.00.3020 and 7404.00.6020.

³HTS codes 7404.00.3045, 7404.00.3055, 7404.00.3065, 7404.00.3090, 7404.00.6045, 7404.00.6055, 7404.00.6065, and 7404.00.6090.

Source: U.S. Census Bureau.

TABLE 16
U.S. EXPORTS OF COPPER SCRAP¹

(Metric tons, gross weight)

Country or locality	Unalloyed ²							Alloyed ³					
	2020							2020					
	2019	No. 1		No. 2		Other		2019	Segregated		Unsegregated		
		October	January– October	October	January– October	October	January– October		October	January– October	October	January– October	
Belgium	23,600	856	5,340	1,230	10,600	231	1,260	14,300	181	870	617	8,500	
Canada	49,200	--	--	--	--	4,680	43,800	42,000	--	--	3,540	25,500	
China	74,800	2,410	22,900	1,590	16,500	2,090	25,600	13,100	867	10,500	2,840	19,400	
Germany	29,400	579	12,200	365	3,150	113	3,900	14,300	134	663	805	12,300	
Greece	8,180	967	5,690	1,100	2,750	327	1,130	973	129	555	208	822	
Hong Kong	19,900	229	5,760	--	401	--	1,240	30,500	20	1,220	174	6,350	
India	14,400	477	2,470	442	3,230	260	2,550	45,500	2,570	17,400	1,480	11,800	
Japan	22,600	788	3,150	937	7,130	788	2,840	20,300	288	1,900	976	10,000	
Korea, Republic of	46,900	2,360	20,800	1,170	6,510	1,140	11,000	25,000	367	5,280	1,100	10,800	
Malaysia	65,300	265	3,340	1,750	11,300	4,240	25,400	156,000	2,050	16,600	7,780	83,400	
Netherlands	4,300	386	2,110	208	1,020	25	1,340	1,010	17	37	20	562	
Pakistan	882	--	26	43	645	--	--	19,800	21	145	1,370	11,400	
Poland	5,450	43	2,020	491	1,340	--	1,120	45	--	19	783	4,570	
Spain	1,510	122	816	17	1,480	375	1,240	8,510	452	2,690	238	4,040	
Taiwan	20,300	378	5,170	56	3,380	263	6,140	20,300	69	2,330	250	13,400	
Thailand	4,120	43	1,140	6	744	129	1,950	16,300	178	2,870	2,450	14,200	
Other	31,200	1,310	11,900	2,230	11,800	350	6,280	21,300	333	3,690	1,830	13,500	
Total	422,000	11,200	105,000	11,600	82,000	15,000	137,000	450,000	7,680	66,800	26,500	251,000	

-- Zero.

¹Data are rounded to no more than three significant digits; may not add to totals shown.

²Harmonized Tariff Schedule of the United States (HTS) codes 7404.00.0010 and 7404.00.0015 (no. 1), 7404.00.0025 (no. 2), and 7404.00.0030 (other).

³HTS codes for segregated alloyed copper scrap are 7404.00.0041, 7404.00.0046, 7404.00.0051, 7404.00.0056, 7404.00.0061, 7404.00.0066, and 7404.00.0075. HTS codes for unsegregated alloyed copper scrap are 7404.00.0085 and 7404.00.0095.

Source: U.S. Census Bureau.