

Mineral Industry Surveys

For information, contact:

Amy C. Tolcin, Zinc Commodity Specialist
 National Minerals Information Center
 U.S. Geological Survey
 989 National Center
 Reston, VA 20192
 Telephone: (703) 648-4940 Fax: (703) 648-7757
 Email: atolcin@usgs.gov

Hodan A. Fatah (Data)
 Telephone: (703) 648-4971
 Fax: (703) 648-7975
 Email: hfatah@usgs.gov

Internet: <https://www.usgs.gov/centers/nmic>

ZINC IN SEPTEMBER 2020

Domestic mine production (recoverable) of zinc in September 2020 was 59,900 metric tons (t) (tables 1, 2). Average daily mine production in September was 2,000 t, 17% less than that in the previous month and 9% less than that in September 2019 (fig. 1). Recoverable zinc mine production during the first 9 months of 2020 was 501,000 t, 11% less than that during the same period in 2019.

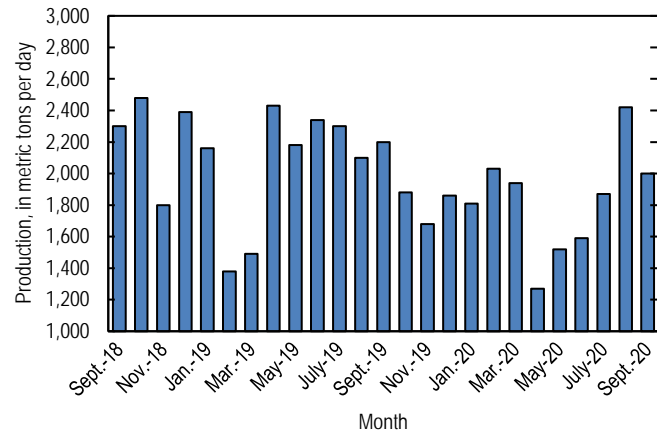


Figure 1. Average daily domestic zinc mine production (recoverable) from September 2018 through September 2020.

Stocks and Prices

Global London Metal Exchange Ltd. (LME) stocks of Special High Grade (SHG) zinc were 212,575 t at the end of September 2020, 3% less than stocks at the end of August but more than triple stocks at the end of September 2019 (fig. 2, table 8). Reported off-warrant stocks of SHG zinc in LME-approved warehouses at the end of September 2020 were about 90,800 t, an increase from 76,300 t at the end of August (London Metal Exchange Ltd., 2020a, b).

The monthly average Platts Metals Week North American SHG zinc price in September 2020 was \$1.19 per pound,

slightly more than that in the previous month and 5% more than that in September 2019. The September 2020 average LME cash price for SHG zinc was \$2,450.50 per metric ton (\$1.11 per pound), slightly more than that in August and 6% more than that in September 2019 (fig. 3, table 7).

The North American premium to the LME cash price in September 2020 averaged 8.0 cents per pound, slightly more than that in the previous month but 8% less than that in September 2019 (fig. 3, table 7).

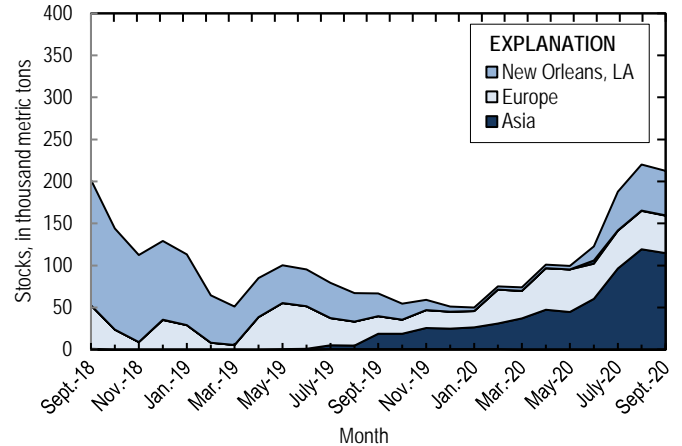


Figure 2. Global LME stocks of Special High Grade zinc, monthend, from September 2018 through September 2020. Source: London Metal Exchange Ltd.

References Cited

London Metal Exchange Ltd., 2020a, Off warrant stock reporting August 2020: London, United Kingdom, London Metal Exchange Ltd. (Accessed December 7, 2020, via <https://www.lme.com/en-GB/Market-Data/Reports-and-data/Warehouse-and-stocks-reports/Off-warrant-stock-reporting>.)
 London Metal Exchange Ltd., 2020b, Off warrant stock reporting September 2020: London, United Kingdom, London Metal Exchange Ltd. (Accessed December 7, 2020, via <https://www.lme.com/en-GB/Market-Data/Reports-and-data/Warehouse-and-stocks-reports/Off-warrant-stock-reporting>.)

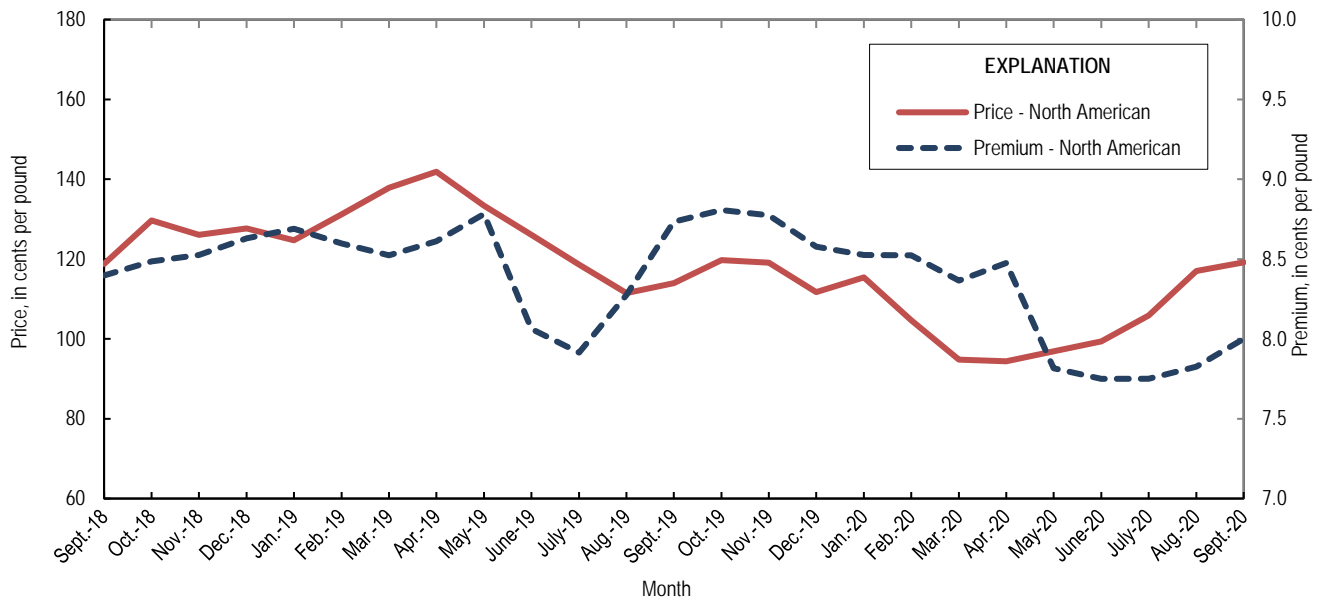


Figure 3. Average monthly North American price and premium for Special High Grade zinc from September 2018 through September 2020. Source: Platts Metals Week.

List services and web feed subscribers are the first to receive notification of USGS minerals information publications and data releases. For information on how to subscribe, go to <https://www.usgs.gov/centers/nmic/minerals-information-publication-list-services>.

TABLE 1
SALIENT ZINC STATISTICS¹

(Metric tons, unless otherwise specified)

	2019	2020		
	January– December ^p	August	September	January– September ²
Production:				
Mine, zinc content of concentrate ³	753,000	77,300	61,700	516,000
Mine, recoverable zinc ³	731,000	75,000	59,900	501,000
Smelter, refined zinc ^e	115,000	14,000	15,000	110,000
Consumption of refined zinc, apparent ⁴	939,000	70,300	61,600	644,000
Imports for consumption:				
Ore and concentrate (zinc content)	10	455	2,270	3,170
Refined zinc	830,000	56,400	46,700	536,000
Exports:				
Ore and concentrate (zinc content)	796,000	162,000	103,000	418,000
Refined zinc	5,170	87	116	1,800
Price:⁵				
London Metal Exchange cash, average, dollars per metric ton	2,548.63	2,406.83	2,450.50	2,142.16
Platts Metals Week North American, average, cents per pound	124.13	117.00	119.15	105.28

^eEstimated. ^pPreliminary.

¹Data are rounded to no more than three significant digits, except prices; may not add to totals shown.

²May include revisions to previously published data.

³Reported zinc content in both zinc and lead concentrates.

⁴Smelter production plus imports for consumption minus domestic exports.

⁵Special High Grade Zinc.

TABLE 2
MINE AND SMELTER PRODUCTION OF ZINC
IN THE UNITED STATES¹

(Metric tons)

Period	Mine ²		Smelter ^c
	Zinc content	Recoverable	
2019:			
September	68,100	66,100	9,900
October	60,000	58,300	9,900
November	52,000	50,500	9,900
December	59,300	57,600	9,900
January–December	753,000	731,000	115,000
2020:			
January	57,700	56,000	10,000
February	60,600	58,800	10,000
March	61,900	60,100	11,000
April	39,300	38,200	11,000
May	48,500	47,000	12,000
June	49,100	47,600	12,000
July	59,700	57,900	14,000
August	77,300	75,000	14,000
September	61,700	59,900	15,000
January–September	516,000	501,000	110,000

^cEstimated.

¹Data are rounded to no more than three significant digits; may not add to totals shown.

²Includes the zinc content in both lead and zinc concentrates.

TABLE 3
U.S. IMPORTS FOR CONSUMPTION OF ZINC¹

(Gross weight, unless otherwise specified)

Material	2019		2020			
	Quantity (metric tons)	Value (thousands)	September		January–September ²	
			Quantity (metric tons)	Value (thousands)	Quantity (metric tons)	Value (thousands)
Ore and concentrate (zinc content)	10	\$7	2,270	\$4,360	3,170	\$4,400
Unwrought:						
Refined zinc	830,000	2,190,000	46,700	111,000	536,000	1,180,000
Zinc alloys	1,530	4,480	80	227	524	1,360
Wrought:						
Bars, rods, profiles, wire	3,020	10,600	359	1,150	2,340	7,140
Plates, sheets, strip, foil	3,010	12,700	189	785	2,110	9,490
Ash and residues:						
Hard zinc spelter	20	17	--	--	--	--
Zinc dross and skimmings	3,730	5,950	457	721	2,920	4,250
Other (zinc content)	1,320	784	100	50	874	538
Other:						
Powders, flakes, dust	25,500	94,900	1,840	6,500	18,400	61,500
Waste and scrap	10,400	18,200	1,050	1,500	7,390	10,800
Chemicals:						
Lithopone	1,170	4,240	35	149	790	2,600
Zinc oxide	99,300	272,000	9,760	22,800	77,900	192,000
Zinc chloride	196	1,450	58	227	254	1,420
Zinc sulfate	72,100	64,700	9,400	7,400	68,900	52,800
Zinc sulfide	956	3,590	52	289	755	3,630

-- Zero.

¹Data are rounded to no more than three significant digits.

²May include revisions to previously published data.

Source: U.S. Census Bureau.

TABLE 4
U.S. IMPORTS OF ZINC, BY TYPE OF MATERIAL AND COUNTRY OR LOCALITY¹

(Metric tons, gross weight, unless otherwise specified)

Material and country or locality	General imports			Imports for consumption		
	2019	2020		2019	2020	
		September	January–September ²		September	January–September ²
Ore and concentrate (zinc content):						
Canada	10	--	--	10	--	--
China	--	164	1,060	--	164	1,060
Peru	--	2,100	2,100	--	2,100	2,100
Total	10	2,270	3,170	10	2,270	3,170
Refined zinc:						
Australia	--	--	33,000	--	--	--
Belgium	--	--	24,100	393	--	1
Brazil	11,300	--	21,900	11,300	--	13,400
Canada	517,000	40,400	369,000	517,000	40,400	369,000
China	49	(³)	102	5,770	(³)	102
Korea, Republic of	8,110	--	30,000	8,340	--	19,600
Mexico	142,000	5,170	100,000	142,000	5,170	100,000
Netherlands	--	--	1,470	3,420	--	--
Peru	59,300	1,050	33,600	59,300	1,050	33,600
Poland	268	100	100	268	100	100
Spain	14,500	--	20,000	81,900	--	123
Taiwan	62	3	24	62	3	24
Other	6	--	--	6	--	--
Total	753,000	46,700	633,000	830,000	46,700	536,000
Oxide:						
Australia	394	32	462	394	32	462
Belgium	30	1	1	30	1	1
Brazil	5	--	19	5	--	19
Canada	44,100	3,160	33,000	44,100	3,160	33,000
China	187	16	118	187	16	118
El Salvador	20	--	--	20	--	--
France	18	--	12	18	--	12
Germany	1,300	83	979	1,300	83	979
Greece	300	--	659	300	--	659
India	74	9	38	74	9	38
Indonesia	103	--	--	103	--	--
Israel	--	--	10	--	--	10
Italy	42	--	22	42	--	22
Japan	927	224	751	927	224	751
Korea, Republic of	96	(³)	58	96	(³)	58
Mexico	39,000	4,600	31,700	39,000	4,600	31,700
Netherlands	9,270	933	7,020	9,270	933	7,020
Peru	2,990	693	2,980	2,990	693	2,980
Russia	20	--	--	20	--	--
United Kingdom	425	--	28	425	--	28
Other	6	10	41	6	10	41
Total	99,300	9,760	77,900	99,300	9,760	77,900

-- Zero.

¹Data are rounded to no more than three significant digits; may not add to totals shown.

²May include revisions to previously published data.

³Less than ½ unit.

Source: U.S. Census Bureau.

TABLE 5
U.S. EXPORTS OF ZINC¹

(Gross weight, unless otherwise specified)

Material	2019		2020			
	Quantity (metric tons)	Value (thousands)	September		January–September ²	
			Quantity (metric tons)	Value (thousands)	Quantity (metric tons)	Value (thousands)
Ore and concentrate (zinc content)	796,000	\$1,320,000	103,000	\$164,000	418,000	\$600,000
Unwrought:						
Refined zinc	5,170	14,300	116	324	1,800	4,960
Zinc alloys	21,600	63,500	1,240	3,440	14,100	37,400
Wrought:						
Bars, rods, profiles, wire	10,200	30,300	859	2,500	6,780	20,700
Plates, sheets, strip, foil	6,190	24,500	480	1,700	3,780	14,000
Ash and residues:						
Hard zinc spelter	9,370	16,700	740	1,110	6,990	9,440
Other (zinc content)	24,900	38,600	2,110	2,900	16,500	21,100
Other:						
Powders, flakes, dust	13,400	48,500	811	2,780	9,180	30,200
Waste and scrap	30,800	40,200	2,270	2,910	17,400	20,400
Chemicals:						
Lithopone	170	905	72	220	309	1,210
Zinc oxide	15,100	30,900	5,850	6,580	27,000	33,700
Zinc chloride	185	316	67	98	391	692
Zinc sulfate	486	648	97	90	423	442
Zinc sulfide	2,070	17,300	82	1,380	957	9,070

¹Data are rounded to no more than three significant digits.

²May include revisions to previously published data.

Source: U.S. Census Bureau.

TABLE 6
U.S. EXPORTS OF ZINC, BY TYPE OF MATERIAL AND COUNTRY OR LOCALITY¹

(Metric tons, gross weight, unless otherwise specified)

Material and country or locality	2019	2020	
		September	January-September ²
Ore and concentrate (zinc content):			
Australia	64,100	--	41,800
Belgium	107,000	--	37,000
Brazil	7,030	--	--
Canada	268,000	79,200	191,000
Finland	29,400	--	15,700
Germany	29,700	--	21,100
Italy	33,800	--	5,290
Japan	38,500	13,500	38,500
Korea, Republic of	69,200	10,500	51,800
Mexico	10,700	2	2
Peru	5,000	--	120
Spain	116,000	--	15,700
Switzerland	17,500	--	--
Other	83	--	16
Total	796,000	103,000	418,000
Refined zinc:			
Australia	46	--	18
Canada	928	79	606
China	502	--	--
Colombia	98	25	124
Guatemala	17	--	10
India	132	--	243
Indonesia	375	--	--
Malaysia	625	--	--
Mexico	1,800	12	632
Panama	39	--	--
South Africa	438	--	--
Vietnam	40	--	164
Other	135	(3)	2
Total	5,170	116	1,800
Oxide:			
Australia	127	--	503
Belgium	90	2	43
Brazil	453	4	233
Canada	4,860	285	2,650
China	457	4	188
France	14	10	232
Germany	131	--	121
Guyana	124	--	38
India	825	5	337
Malaysia	17	--	61
Mexico	7,140	5,450	21,800
Poland	177	--	80
United Kingdom	127	7	216
Other	612	86	537
Total	15,100	5,850	27,000

-- Zero.

¹Data are rounded to no more than three significant digits; may not add to totals shown.

²May include revisions to previously published data.

³Less than ½ unit.

Source: U.S. Census Bureau.

TABLE 7
AVERAGE PRICES FOR SPECIAL HIGH GRADE ZINC

Period	North American		London Metal Exchange	
	Premium	Price ¹	cash ²	
	¢/lb.	¢/lb.	¢/lb.	\$/t
2019:				
September	8.7	113.93	105.20	2,319.16
October	8.8	119.71	110.90	2,444.99
November	8.8	119.11	110.33	2,432.43
December	8.6	111.70	103.12	2,273.40
January–December	8.5	124.13	115.60	2,548.63
2020:				
January	8.5	115.42	106.89	2,356.60
February	8.5	104.68	96.16	2,119.90
March	8.4	94.79	86.42	1,905.33
April	8.5	94.39	85.91	1,894.08
May	7.8	96.87	89.06	1,963.40
June	7.8	99.40	91.65	2,020.61
July	7.8	105.83	98.08	2,162.24
August	7.8	117.00	109.17	2,406.83
September	8.0	119.15	111.15	2,450.50
January–September	8.1	105.28	97.17	2,142.16

¹Platts Metals Week North American price. Based on the London Metal Exchange cash price plus the North American premium.

²Average of the cash buyer price and the cash seller and settlement price.

Source: Platts Metals Week.

TABLE 8
LONDON METAL EXCHANGE (LME) STOCKS OF SPECIAL HIGH GRADE ZINC, END OF PERIOD

(Metric tons)

Period	United States			Asia	Europe	Other	Total LME
	Baltimore, MD	New Orleans, LA	Total				
2019:							
September	--	27,200	27,200	18,300	20,700	575	66,800
October	--	18,900	18,900	18,000	17,100	575	54,500
November	--	12,500	12,500	25,200	21,000	575	59,200
December	--	6,130	6,130	24,400	20,400	375	51,200
2020:							
January	--	4,150	4,150	26,000	19,300	375	49,800
February	--	4,100	4,100	30,800	40,000	350	75,200
March	--	4,000	4,000	36,700	33,000	200	73,800
April	--	4,200	4,200	47,300	49,200	100	101,000
May	--	4,180	4,180	44,700	50,700	25	99,600
June	3,830	16,700	20,500	60,400	41,600	--	123,000
July	475	46,100	46,600	96,500	44,900	--	188,000
August	475	54,700	55,100	119,000	45,700	--	220,000
September	475	53,000	53,400	115,000	44,600	--	213,000

-- Zero.

Source: London Metal Exchange, Ltd.