

Mineral Industry Surveys

For information, contact:

Kim B. Shedd, Cobalt Commodity Specialist
 National Minerals Information Center
 U.S. Geological Survey
 989 National Center
 Reston, VA 20192
 Telephone: (703) 648-4974, Fax: (703) 648-7757
 Email: kshedd@usgs.gov

Annie Hwang (Data)
 Telephone: (703) 648-7952
 Fax: (703) 648-7975
 Email: ahwang@usgs.gov

Internet: <https://www.usgs.gov/centers/nmic>

COBALT IN SEPTEMBER 2020

The amount of cobalt contained in U.S. imports of cobalt metals and chemicals in September 2020 was 66% less than that imported in September 2019. For the first 9 months of 2020, the amount of cobalt contained in imports was 22% less than that imported during the same period in 2019 (table 2). The amount of cobalt contained in U.S. exports of unwrought cobalt and chemicals in September 2020 was 6% less than that exported in September 2019 and during the first 9 months of 2020, the amount exported was 13% less than that exported during the same period in 2019 (table 4).

that in September 2019. The following listed prices are for cobalt metal in September, in dollars per pound.

Type	Price range	Average price
U.S. spot ¹	15.30–15.90	15.58
LME cash mean ²	14.96–15.42	15.19

¹Source: Platts Metals Week, minimum 99.8% cobalt cathode.

²London Metal Exchange, mean of the cash buyer and cash seller price, minimum 99.3% cobalt briquettes, cathode, ingot, or rounds (converted from dollars per metric ton and rounded to the nearest cent).

Prices

In September, the monthly average U.S. spot cobalt price increased slightly from that in August and was 14% lower than that in September 2019. The monthly average LME cash mean price was slightly higher than that in August and 7% lower than

List services and web feed subscribers are the first to receive notification of USGS minerals information publications and data releases. For information on how to subscribe, go to <https://www.usgs.gov/centers/nmic/minerals-information-publication-list-services>.

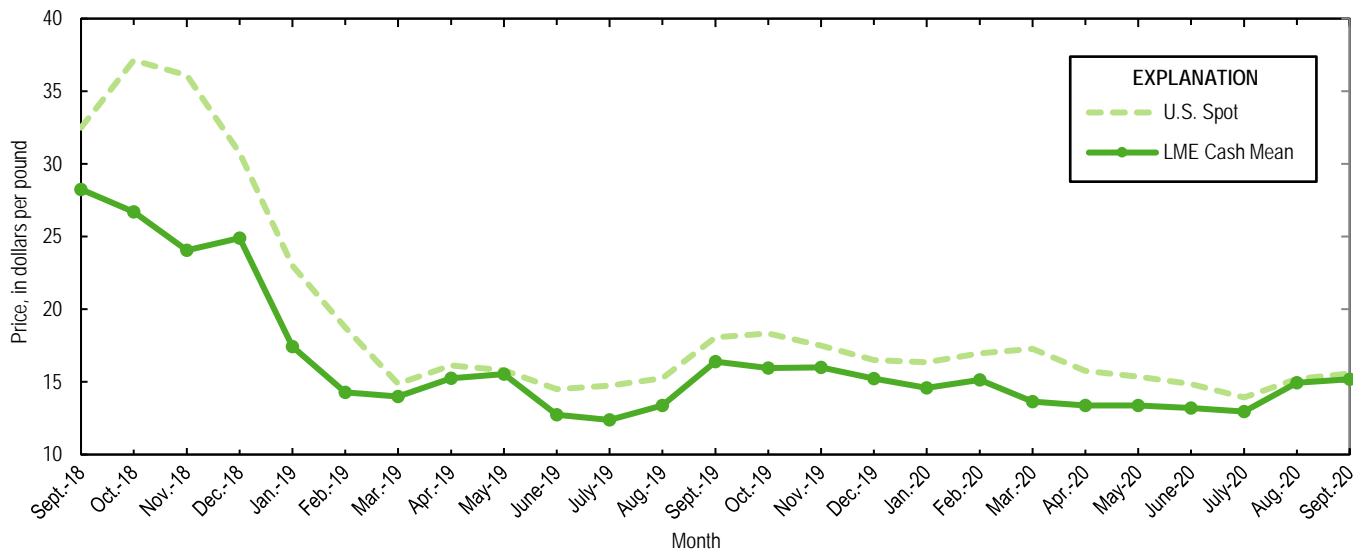


Figure 1. Average U.S. spot prices and LME cash mean prices for September 2018 through September 2020. Sources: Platts Metals Week and London Metal Exchange.

TABLE 1
REPORTED STOCKS OF COBALT METAL, END OF PERIOD

(Metric tons, contained cobalt)

Period	U.S. Government ²	LME ¹		Total
		U.S. warehouse	Non-U.S. warehouse	
2019:				
September	302	191	643	834
October	302	111	600	711
November	302	111	576	687
December	302	102	583	685
2020:				
January	302	95	555	650
February	302	94	551	645
March	302	92	551	643
April	302	91	513	604
May	302	89	513	602
June	302	89	513	602
July	302	82	513	595
August	302	82	373	455
September	302	82	369	451

¹London Metal Exchange.

²Data from Defense Logistics Agency Strategic Materials.

TABLE 2
U.S. IMPORTS FOR CONSUMPTION OF COBALT, BY COUNTRY OR LOCALITY¹

Period and country or locality of origin	Metals ²		Oxides and hydroxides		Salts and compounds ³		Total cobalt content for the period ⁵ (metric tons)	Cobalt content, year to date ^{5,6} (metric tons)
	Gross weight (metric tons)	Value ⁴ (thousands)	Gross weight (metric tons)	Value ⁴ (thousands)	Gross weight (metric tons)	Value ⁴ (thousands)		
2019:								
September	1,420	\$48,300	123	\$3,110	191	\$1,930	1,570	10,600
October	779	27,800	198	5,150	152	1,640	973	11,500
November	829	29,600	167	4,600	231	3,110	1,030	12,600
December	1,210	42,500	102	2,740	103	1,370	1,320	13,900
January–September	9,130 ^r	353,000 ^r	1,240 ^r	31,800 ^r	1,620 ^r	21,700 ^r	10,600 ^r	XX
January–December	11,900	453,000	1,710	44,300	2,110	27,900	13,900	XX
2020:								
January	1,670	62,300	141	3,560	147	1,330	1,820	1,820
February	803	27,300	112	2,850	76	768	906	2,720
March	1,080	40,600	160	3,810	203	2,360	1,260	3,980
April	927	32,200	103	2,780	279	2,880	1,090	5,070
May	459	15,000	128	3,310	317	4,010	665	5,740
June	446	13,400	60	1,460	164	1,770	539	6,280
July	725	22,800	103	2,530	112	1,410	838	7,120
August	450	13,100	30	737	168	2,220	536	7,650
September:								
Australia	--	--	10	173	--	--	7	737
Belgium	--	--	--	--	16	285	7	181
Brazil	--	--	--	--	18	211	6	57
Canada	149	4,460	--	--	--	--	149	1,520
China	(7)	25	--	--	17	145	5	95
Finland	16	501	93	2,010	171	2,120	147	935
France	1	65	--	--	--	--	1	7
Germany	8	550	--	--	--	--	8	38
Japan	54	1,880	--	--	10	51	56	1,140
Korea, Republic of	--	--	--	--	--	--	--	25
Madagascar	--	--	--	--	--	--	--	397
Mexico	(7)	7	1	20	--	--	1	62
Morocco	52	1,630	--	--	--	--	52	264
Netherlands	--	--	--	--	(7)	8	(7)	14
Norway	--	--	--	--	--	--	--	1,550
Russia	22	710	--	--	--	--	22	693
South Africa	20	200	--	--	--	--	20	168
Taiwan	--	--	14	182	8	98	12	50
United Kingdom	1	68	56	1,180	4	47	43	261
Other	(7)	5	--	--	--	--	(7)	6
Total	325	10,100	175	3,570	244	2,960	537	8,190
January–September	6,890	237,000	1,010	24,600	1,710	19,700	8,190	XX

^rRevised. XX Not applicable. -- Zero.

¹Data are rounded to no more than three significant digits; may not add to totals shown.

²Unwrought cobalt, excluding alloys; includes cobalt cathode and cobalt metal powder; may include intermediate products of cobalt metallurgy.

³Includes cobalt acetates, cobalt carbonates, cobalt chlorides, and cobalt sulfates.

⁴Customs value.

⁵Estimated from gross weights.

⁶May include revisions to previously published data.

⁷Less than ½ unit.

Source: U.S. Census Bureau.

TABLE 3
U.S. IMPORTS FOR CONSUMPTION OF ADDITIONAL COBALT MATERIALS, BY COUNTRY OR LOCALITY¹

Period and country or locality of origin	Unwrought cobalt alloys		Cobalt waste and scrap		Wrought cobalt and cobalt articles	
	Gross weight (metric tons)	Value ² (thousands)	Gross weight (metric tons)	Value ² (thousands)	Gross weight (metric tons)	Value ² (thousands)
2019:						
September	22	\$1,510	155	\$1,880	41	\$4,150
October	16	875	158	2,130	47	4,980
November	21	1,240	192	2,950	43	4,480
December	40	2,280	152	2,170	52	5,320
January–September	292 ^r	19,200 ^r	1,600	21,700 ^r	349 ^r	39,000 ^r
January–December	369	23,600	2,100	28,900	491	53,800
2020:						
January	12	738	180	1,620	37	4,360
February	36	1,650	69	769	30	3,570
March	40	1,890	248	2,240	49	5,880
April	49	2,570	167	1,830	31	4,230
May	30	1,390	146	1,640	22	3,660
June	3	146	65	288	20	3,230
July	10	460	88	1,250	21	3,430
August	12	472	128	1,800	14	2,150
September:						
Austria	--	--	--	--	3	272
Belgium	6	180	3	133	1	42
Canada	(3)	4	8	69	1	504
China	--	--	--	--	2	518
France	--	--	4	138	13	1,480
India	--	--	--	--	3	62
Ireland	--	--	9	6	--	--
Netherlands	--	--	4	45	--	--
Tunisia	--	--	6	49	--	--
United Kingdom	16	730	5	59	6	507
Other	(3)	24	1	9	2	259
Total	22	937	39	509	31	3,640
January–September	214	10,300	1,130	11,900	256	34,200

^rRevised. -- Zero.

¹Data are rounded to no more than three significant digits; may not add to totals shown.

²Customs value.

³Less than ½ unit.

Source: U.S. Census Bureau.

TABLE 4
U.S. EXPORTS OF COBALT MATERIALS¹

Period	Unwrought cobalt, powders, matte, waste and scrap ²		Oxides and hydroxides		Salts and compounds ³		Total cobalt content for the period ⁵ (metric tons)	Cobalt content, year to date ^{5,6} (metric tons)
	Gross weight (metric tons)	Value ⁴ (thousands)	Gross weight (metric tons)	Value ⁴ (thousands)	Gross weight (metric tons)	Value ⁴ (thousands)		
2019:								
September	248	\$8,830	2	\$55	26	\$316	256	3,170
October	260	9,650	5	215	38	487	272	3,450
November	267	8,330	(7)	13	--	--	267	3,710
December	361	11,000	1	25	(7)	4	361	4,070
January–September	3,080 ^r	99,200 ^r	74	1,460	165	1,880	3,170 ^r	XX
January–December	3,970	128,000	79	1,710	203	2,370	4,070	XX
2020:								
January	335	11,900	8	326	32	93	349	349
February	301	8,930	14	489	3	39	311	660
March	248	8,320	7	249	65	292	268	928
April	351	8,700	3	109	39	340	363	1,290
May	260	9,310	9	380	51	2,060	279	1,570
June	398	8,350	8	329	29	174	411	1,980
July	248	7,250	8	230	59	266	268	2,250
August	271	6,610	11	262	9	23	281	2,530
September	231	6,300	3	131	31	232	240	2,770
January–September	2,640	75,700	71	2,510	318	3,520	2,770	XX

^rRevised. XX Not applicable. -- Zero.

¹Data are rounded to no more than three significant digits; may not add to totals shown.

²May include other intermediate products of cobalt metallurgy and unwrought cobalt alloys.

³Cobalt acetates and cobalt chlorides.

⁴Free alongside ship (f.a.s.) value.

⁵Estimated from gross weights.

⁶May include revisions to previously published data.

⁷Less than ½ unit.

Source: U.S. Census Bureau.

TABLE 5
U.S. EXPORTS OF WROUGHT COBALT, COBALT ORE,
AND CONCENTRATES¹

Period	Wrought cobalt and cobalt articles		Cobalt ore and concentrates	
	Gross weight (metric tons)	Value ² (thousands)	Gross weight (metric tons)	Value ² (thousands)
2019:				
September	141	\$12,600	(3)	\$10
October	229	17,200	(3)	4
November	242	18,700	--	--
December	208	16,700	77	211
January–September	1,070 ³	112,000	25	388
January–December	1,750	164,000	102	603
2020:				
January	107	11,800	150	515
February	128	14,900	--	--
March	123	13,700	--	--
April	100	10,600	(3)	6
May	109	11,500	--	--
June	97	11,000	--	--
July	96	11,200	--	--
August	100	9,650	--	--
September	108	10,400	--	--
January–September	969	105,000	150	521

¹Revised. -- Zero.

¹Data are rounded to no more than three significant digits; may not add to totals shown.

²Free alongside ship (f.a.s.) value.

³Less than ½ unit.

Source: U.S. Census Bureau.