

Mineral Industry Surveys

For information, contact:

Amy C. Tolcin, Zinc Commodity Specialist
 National Minerals Information Center
 U.S. Geological Survey
 989 National Center
 Reston, VA 20192
 Telephone: (703) 648-4940 Fax: (703) 648-7757
 Email: atolcin@usgs.gov

Hodan A. Fatah (Data)
 Telephone: (703) 648-4971
 Fax: (703) 648-7975
 Email: hfatah@usgs.gov

Internet: <https://www.usgs.gov/centers/nmic>

ZINC IN AUGUST 2020

Domestic mine production (recoverable) of zinc in August 2020 was 75,000 metric tons (t) (tables 1, 2). Average daily mine production in August was 2,420 t, 29% more than that in the previous month and 15% more than that in August 2019 (fig. 1).

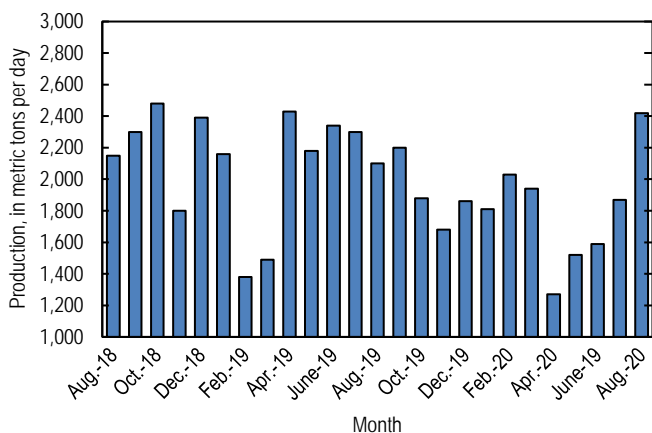


Figure 1. Average daily domestic zinc mine production (recoverable) from August 2018 through August 2020.

Stocks and Prices

Global London Metal Exchange Ltd. (LME) stocks of Special High Grade (SHG) zinc were 220,125 t at the end of August 2020, 17% more than stocks at the end of July and more than triple stocks at the end of August 2019 (fig. 2, table 8). Reported off-warrant stocks of SHG zinc in LME-approved warehouses at the end of July 2020 were about 57,500 t, a decrease from 73,100 t at the end of June (London Metal Exchange Ltd., 2020a, b).

The monthly average Platts Metals Week North American SHG zinc price in August 2020 was \$1.17 per pound, 11% more than that in the previous month and 5% more than that in

August 2019. The August 2020 average LME cash price for SHG zinc was \$2,406.83 per metric ton (\$1.09 per pound), 11% more than that in July and 6% more than that in August 2019 (fig. 3, table 7).

The North American premium to the LME cash price in August 2020 averaged 7.8 cents per pound, slightly more than that in the previous month but 6% less than that in August 2019 (fig. 3, table 7).

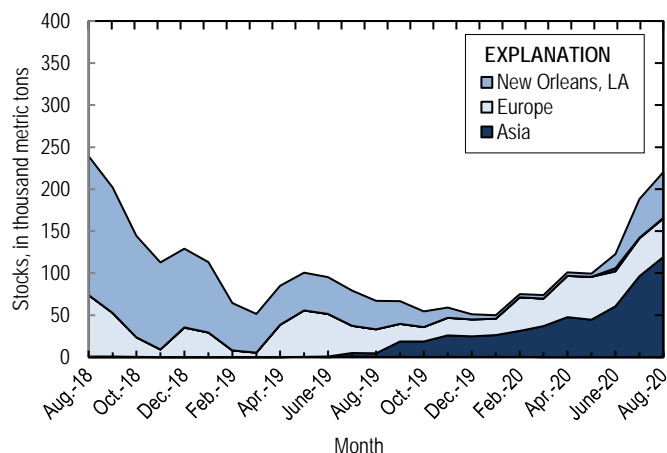


Figure 2. Global LME stocks of Special High Grade zinc, monthend, from August 2018 through August 2020. Source: London Metal Exchange Ltd.

References Cited

- London Metal Exchange Ltd., 2020a, Off warrant stock reporting July 2020: London, United Kingdom, London Metal Exchange Ltd. (Accessed November 23, 2020, via <https://www.lme.com/en-GB/Market-Data/Reports-and-data/Warehouse-and-stocks-reports/Off-warrant-stock-reporting>.)
- London Metal Exchange Ltd., 2020b, Off warrant stock reporting June 2020: London, United Kingdom, London Metal Exchange Ltd. (Accessed November 23, 2020, via <https://www.lme.com/en-GB/Market-Data/Reports-and-data/Warehouse-and-stocks-reports/Off-warrant-stock-reporting>.)

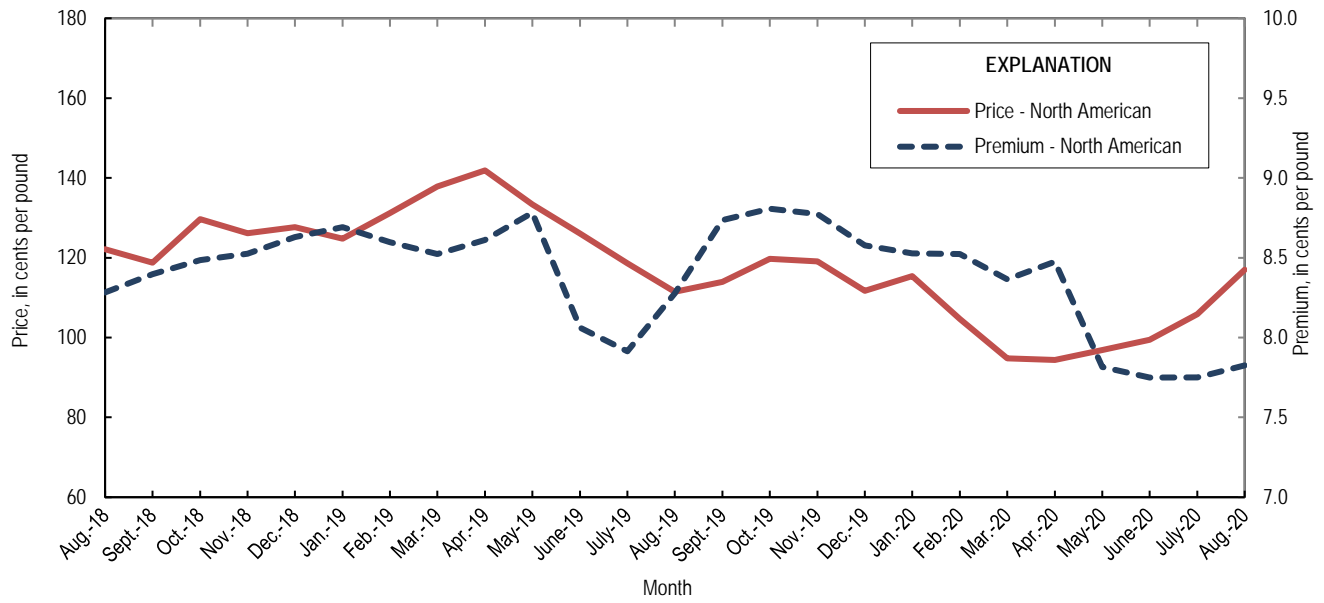


Figure 3. Average monthly North American price and premium for Special High Grade zinc from August 2018 through August 2020. Source: Platts Metals Week.

List services and web feed subscribers are the first to receive notification of USGS minerals information publications and data releases. For information on how to subscribe, go to <https://www.usgs.gov/centers/nmic/minerals-information-publication-list-services>.

TABLE 1
SALIENT ZINC STATISTICS¹

(Metric tons, unless otherwise specified)

	2019	2020		
	January– December ^p	July	August	January– August ²
Production:				
Mine, zinc content of concentrate ³	753,000	59,700	77,300	454,000
Mine, recoverable zinc ³	731,000	57,900	75,000	441,000
Smelter, refined zinc ^e	115,000	14,000	14,000	94,000
Consumption of refined zinc, apparent ⁴	939,000	79,700	70,300	582,000
Imports for consumption:				
Ore and concentrate (zinc content)	10	446	455	901
Refined zinc	830,000	66,000	56,400	489,000
Exports:				
Ore and concentrate (zinc content)	796,000	72,400	162,000	315,000
Refined zinc	5,170	233	87	1,680
Price:⁵				
London Metal Exchange cash, average, dollars per metric ton	2,548.63	2,162.24	2,406.83	2,103.62
Platts Metals Week North American, average, cents per pound	124.13	105.83	117.00	103.55

^eEstimated. ^pPreliminary.

¹Data are rounded to no more than three significant digits, except prices; may not add to totals shown.

²May include revisions to previously published data.

³Reported zinc content in both zinc and lead concentrates.

⁴Smelter production plus imports for consumption minus domestic exports.

⁵Special High Grade Zinc.

TABLE 2
MINE AND SMELTER PRODUCTION OF ZINC
IN THE UNITED STATES¹

(Metric tons)

Period	Mine ²		Smelter ^c
	Zinc content	Recoverable	
2019:			
August	67,100	65,100	9,900
September	68,100	66,100	9,900
October	60,000	58,300	9,900
November	52,000	50,500	9,900
December	59,300	57,600	9,900
January–December	753,000	731,000	115,000
2020:			
January	57,700	56,000	10,000
February	60,600	58,800	10,000
March	61,900	60,100	11,000
April	39,300	38,200	11,000
May	48,500	47,000	12,000
June	49,100	47,600	12,000
July	59,700	57,900	14,000
August	77,300	75,000	14,000
January–August	454,000	441,000	94,000

^cEstimated.

¹Data are rounded to no more than three significant digits; may not add to totals shown.

²Includes the zinc content in both lead and zinc concentrates.

TABLE 3
U.S. IMPORTS FOR CONSUMPTION OF ZINC¹

(Gross weight, unless otherwise specified)

Material	2019		2020			
	Quantity (metric tons)	Value (thousands)	August		January–August ²	
			Quantity (metric tons)	Value (thousands)	Quantity (metric tons)	Value (thousands)
Ore and concentrate (zinc content)	10	\$7	455	\$22	901	\$46
Unwrought:						
Refined zinc	830,000	2,190,000	56,400	126,000	489,000	1,070,000
Zinc alloys	1,530	4,480	77	185	444	1,130
Wrought:						
Bars, rods, profiles, wire	3,020	10,600	221	674	1,980	5,990
Plates, sheets, strip, foil	3,010	12,700	233	813	1,920	8,700
Ash and residues:						
Hard zinc spelter	20	17	--	--	--	--
Zinc dross and skimmings	3,730	5,950	308	515	2,470	3,530
Other (zinc content)	1,320	784	171	99	774	488
Other:						
Powders, flakes, dust	25,500	94,900	1,900	6,430	16,600	55,000
Waste and scrap	10,400	18,200	1,380	1,680	6,330	9,290
Chemicals:						
Lithopone	1,170	4,240	--	--	755	2,460
Zinc oxide	99,300	272,000	8,040	17,500	68,100	169,000
Zinc chloride	196	1,450	6	64	196	1,190
Zinc sulfate	72,100	64,700	7,820	5,870	59,500	45,400
Zinc sulfide	956	3,590	47	289	703	3,340

-- Zero.

¹Data are rounded to no more than three significant digits.

²May include revisions to previously published data.

Source: U.S. Census Bureau.

TABLE 4
U.S. IMPORTS OF ZINC, BY TYPE OF MATERIAL AND COUNTRY OR LOCALITY¹

(Metric tons, gross weight, unless otherwise specified)

Material and country or locality	General imports			Imports for consumption		
	2019	2020		2019	2020	
		August	January–August ²		August	January–August ²
Ore and concentrate (zinc content):						
Canada	10	--	--	10	--	--
China	--	455	901	--	455	901
Total	10	455	901	10	455	901
Refined zinc:						
Australia	--	--	33,000	--	--	--
Belgium	--	24,100	24,100	393	--	1
Brazil	11,300	216	21,900	11,300	216	13,400
Canada	517,000	44,600	328,000	517,000	44,600	328,000
China	49	--	102	5,770	--	102
Korea, Republic of	8,110	--	30,000	8,340	--	19,600
Mexico	142,000	6,920	95,300	142,000	6,920	95,300
Netherlands	--	1,470	1,470	3,420	--	--
Peru	59,300	4,710	32,500	59,300	4,710	32,500
Poland	268	--	--	268	--	--
Spain	14,500	--	20,000	81,900	--	123
Taiwan	62	--	21	62	--	21
Other	6	--	--	6	--	--
Total	753,000	82,000	587,000	830,000	56,400	489,000
Oxide:						
Australia	394	32	430	394	32	430
Belgium	30	--	--	30	--	--
Brazil	5	--	19	5	--	19
Canada	44,100	3,100	29,800	44,100	3,100	29,800
China	187	37	103	187	37	103
El Salvador	20	--	--	20	--	--
France	18	--	12	18	--	12
Germany	1,300	129	896	1,300	129	896
Greece	300	--	659	300	--	659
India	74	--	30	74	--	30
Indonesia	103	--	--	103	--	--
Israel	--	--	10	--	--	10
Italy	42	--	22	42	--	22
Japan	927	30	528	927	30	528
Korea, Republic of	96	⁽³⁾	58	96	⁽³⁾	58
Mexico	39,000	3,740	27,100	39,000	3,740	27,100
Netherlands	9,270	851	6,080	9,270	851	6,080
Peru	2,990	118	2,290	2,990	118	2,290
Russia	20	--	--	20	--	--
United Kingdom	425	--	28	425	--	28
Other	6	--	31	6	--	31
Total	99,300	8,040	68,100	99,300	8,040	68,100

-- Zero.

¹Data are rounded to no more than three significant digits; may not add to totals shown.

²May include revisions to previously published data.

³Less than ½ unit.

Source: U.S. Census Bureau.

TABLE 5
U.S. EXPORTS OF ZINC¹

(Gross weight, unless otherwise specified)

Material	2019		2020			
	Quantity (metric tons)	Value (thousands)	August		January–August ²	
			Quantity (metric tons)	Value (thousands)	Quantity (metric tons)	Value (thousands)
Ore and concentrate (zinc content)	796,000	\$1,320,000	162,000	\$237,000	315,000	\$435,000
Unwrought:						
Refined zinc	5,170	14,300	87	262	1,680	4,630
Zinc alloys	21,600	63,500	2,250	6,220	12,900	34,000
Wrought:						
Bars, rods, profiles, wire	10,200	30,300	791	2,310	5,920	18,200
Plates, sheets, strip, foil	6,190	24,500	473	1,720	3,300	12,300
Ash and residues:						
Hard zinc spelter	9,370	16,700	842	1,190	6,250	8,330
Other (zinc content)	24,900	38,600	2,200	2,930	14,400	18,200
Other:						
Powders, flakes, dust	13,400	48,500	632	2,080	8,370	27,400
Waste and scrap	30,800	40,200	2,100	2,190	15,100	17,500
Chemicals:						
Lithopone	170	905	54	195	237	988
Zinc oxide	15,100	30,900	5,830	5,930	21,100	27,100
Zinc chloride	185	316	6	12	324	595
Zinc sulfate	486	648	7	23	326	352
Zinc sulfide	2,070	17,300	73	1,060	875	7,690

¹Data are rounded to no more than three significant digits.

²May include revisions to previously published data.

Source: U.S. Census Bureau.

TABLE 6
U.S. EXPORTS OF ZINC, BY TYPE OF MATERIAL AND COUNTRY OR LOCALITY¹

(Metric tons, gross weight, unless otherwise specified)

Material and country or locality	2019	2020	
		August	January-August ²
Ore and concentrate (zinc content):			
Australia	64,100	20,900	41,800
Belgium	107,000	34,200	37,000
Brazil	7,030	--	--
Canada	268,000	28,800	112,000
Finland	29,400	15,700	15,700
Germany	29,700	21,100	21,100
Italy	33,800	5,290	5,290
Japan	38,500	6,250	25,000
Korea, Republic of	69,200	14,500	41,200
Mexico	10,700	--	--
Peru	5,000	--	120
Spain	116,000	15,700	15,700
Switzerland	17,500	--	--
Other	83	5	16
Total	796,000	162,000	315,000
Refined zinc:			
Australia	46	11	18
Canada	928	45	527
China	502	--	--
Colombia	98	25	99
Guatemala	17	--	10
India	132	--	243
Indonesia	375	--	--
Malaysia	625	--	--
Mexico	1,800	7	620
Panama	39	--	--
South Africa	438	--	--
Vietnam	40	--	164
Other	135	(3)	1
Total	5,170	87	1,680
Oxide:			
Australia	127	--	503
Belgium	90	--	41
Brazil	453	11	230
Canada	4,860	521	2,370
China	457	4	184
France	14	1	221
Germany	131	--	121
Guyana	124	--	38
India	825	3	332
Malaysia	17	--	61
Mexico	7,140	5,230	16,300
Poland	177	--	80
United Kingdom	127	(3)	209
Other	612	56	451
Total	15,100	5,830	21,100

-- Zero.

¹Data are rounded to no more than three significant digits; may not add to totals shown.

²May include revisions to previously published data.

³Less than ½ unit.

Source: U.S. Census Bureau.

TABLE 7
AVERAGE PRICES FOR SPECIAL HIGH GRADE ZINC

Period	North American		London Metal Exchange	
	Premium ¢/lb.	Price ¹ ¢/lb.	cash ² ¢/lb. \$/t	
2019:				
August	8.3	111.45	103.17	2,274.60
September	8.7	113.93	105.20	2,319.16
October	8.8	119.71	110.90	2,444.99
November	8.8	119.11	110.33	2,432.43
December	8.6	111.70	103.12	2,273.40
January–December	8.5	124.13	115.60	2,548.63
2020:				
January	8.5	115.42	106.89	2,356.60
February	8.5	104.68	96.16	2,119.90
March	8.4	94.79	86.42	1,905.33
April	8.5	94.39	85.91	1,894.08
May	7.8	96.87	89.06	1,963.40
June	7.8	99.40	91.65	2,020.61
July	7.8	105.83	98.08	2,162.24
August	7.8	117.00	109.17	2,406.83
January–August	8.1	103.55	95.42	2,103.62

¹Platts Metals Week North American price. Based on the London Metal Exchange cash price plus the North American premium.

²Average of the cash buyer price and the cash seller and settlement price.

Source: Platts Metals Week.

TABLE 8
LONDON METAL EXCHANGE (LME) STOCKS OF SPECIAL HIGH GRADE ZINC, END OF PERIOD

(Metric tons)

Period	United States			Asia	Europe	Other	Total LME
	Baltimore, MD	New Orleans, LA	Total				
2019:							
August	--	33,900	33,900	4,150	28,400	575	67,000
September	--	27,200	27,200	18,300	20,700	575	66,800
October	--	18,900	18,900	18,000	17,100	575	54,500
November	--	12,500	12,500	25,200	21,000	575	59,200
December	--	6,130	6,130	24,400	20,400	375	51,200
2020:							
January	--	4,150	4,150	26,000	19,300	375	49,800
February	--	4,100	4,100	30,800	40,000	350	75,200
March	--	4,000	4,000	36,700	33,000	200	73,800
April	--	4,200	4,200	47,300	49,200	100	101,000
May	--	4,180	4,180	44,700	50,700	25	99,600
June	3,830	16,700	20,500	60,400	41,600	--	123,000
July	475	46,100	46,600	96,500	44,900	--	188,000
August	475	54,700	55,100	119,000	45,700	--	220,000

-- Zero.

Source: London Metal Exchange, Ltd.