

Mineral Industry Surveys

For information, contact:

Amy C. Tolcin, Zinc Commodity Specialist
 National Minerals Information Center
 U.S. Geological Survey
 989 National Center
 Reston, VA 20192
 Telephone: (703) 648-4940 Fax: (703) 648-7757
 Email: atolcin@usgs.gov

Hodan A. Fatah (Data)
 Telephone: (703) 648-4971
 Fax: (703) 648-7975
 Email: hfatah@usgs.gov

Internet: <https://www.usgs.gov/centers/nmic>

ZINC IN JULY 2020

Domestic mine production (recoverable) of zinc in July 2020 was 57,900 metric tons (t) (tables 1, 2). Average daily mine production in July was 1,870 t, 18% more than that in the previous month but 19% less than that in July 2019 (fig. 1).

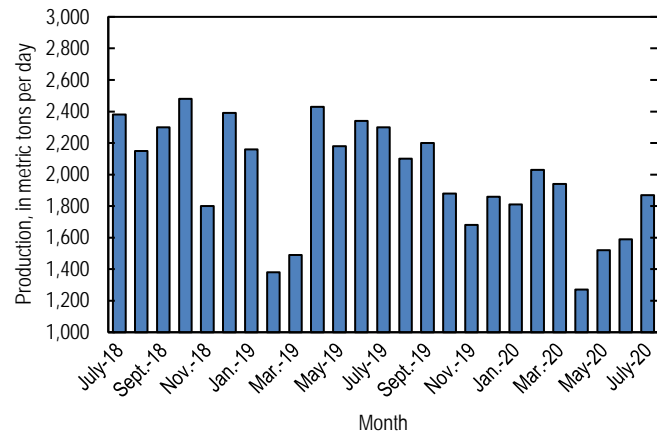


Figure 1. Average daily domestic zinc mine production (recoverable) from July 2018 through July 2020.

Stocks and Prices

Global London Metal Exchange Ltd. (LME) stocks of Special High Grade (SHG) zinc were 187,975 t at the end of July 2020, 53% more than stocks at the end of June and more than double stocks at the end of July 2019 (fig. 2, table 8). Reported off-warrant stocks of SHG zinc in LME-approved warehouses at the end of July 2020 were about 57,500 t, a decrease from 73,100 t at the end of June (London Metal Exchange Ltd., 2020a, b).

The monthly average Platts Metals Week North American SHG zinc price in July 2020 was \$1.06 per pound, 6% more than that in the previous month but 11% lower than that in July 2019. The July 2020 average LME cash price for SHG zinc was

\$2,162.24 per metric ton (\$0.98 per pound), 7% more than that in June but 11% lower than that in July 2019 (fig. 3, table 7).

The North American premium to the LME cash price in July 2020 averaged 7.8 cents per pound, unchanged from that in the previous month and slightly less than that in July 2019 (fig. 3, table 7).

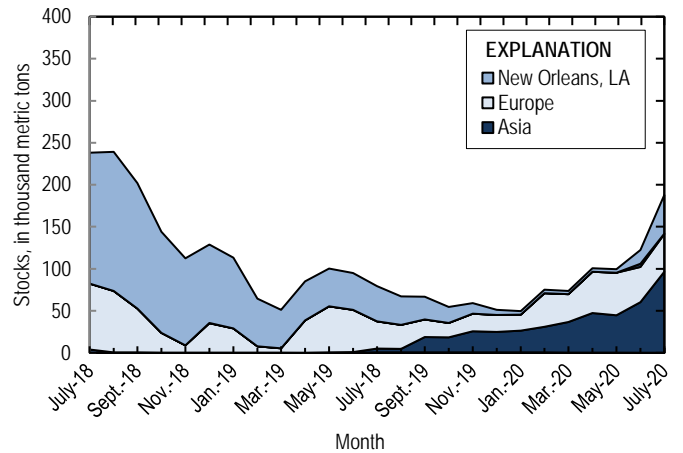


Figure 2. Global LME stocks of Special High Grade zinc, monthend, from July 2018 through July 2020. Source: London Metal Exchange Ltd.

References Cited

London Metal Exchange Ltd., 2020a, Off warrant stock reporting July 2020: London, United Kingdom, London Metal Exchange Ltd. (Accessed November 23, 2020, via <https://www.lme.com/en-GB/Market-Data/Reports-and-data/Warehouse-and-stocks-reports/Off-warrant-stock-reporting>.)
 London Metal Exchange Ltd., 2020b, Off warrant stock reporting June 2020: London, United Kingdom, London Metal Exchange Ltd. (Accessed November 23, 2020, via <https://www.lme.com/en-GB/Market-Data/Reports-and-data/Warehouse-and-stocks-reports/Off-warrant-stock-reporting>.)

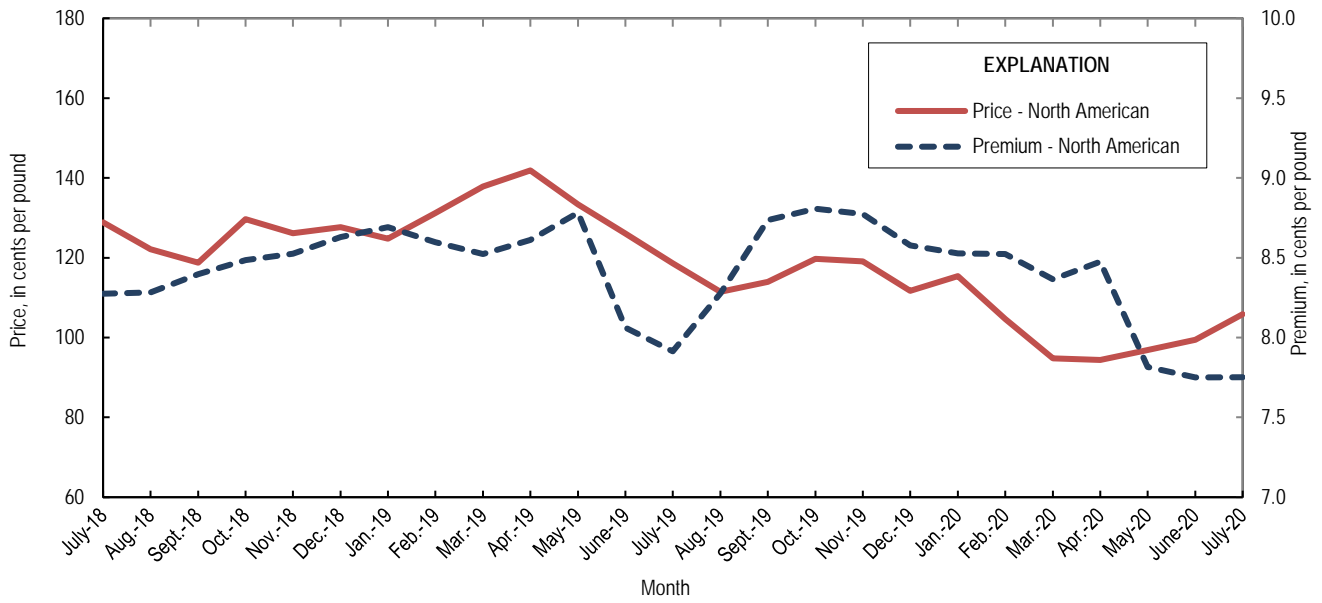


Figure 3. Average monthly North American price and premium for Special High Grade zinc from July 2018 through July 2020. Source: Platts Metals Week.

List services and web feed subscribers are the first to receive notification of USGS minerals information publications and data releases. For information on how to subscribe, go to <https://www.usgs.gov/centers/nmic/minerals-information-publication-list-services>.

TABLE 1
SALIENT ZINC STATISTICS¹

(Metric tons, unless otherwise specified)

	2019	2020		
	January– December ^p	June	July	January– July ²
Production:				
Mine, zinc content of concentrate ³	753,000	49,100	59,700	377,000
Mine, recoverable zinc ³	731,000	47,600	57,900	366,000
Smelter, refined zinc ^e	115,000	12,000 ^r	14,000	80,000
Consumption of refined zinc, apparent ⁴	939,000	58,700 ^r	79,700	511,000
Imports for consumption:				
Ore and concentrate (zinc content)	10	--	446	446
Refined zinc	830,000	46,800	66,000	433,000
Exports:				
Ore and concentrate (zinc content)	796,000	40,400	72,400	152,000
Refined zinc	5,170	77	233	1,600
Price:⁵				
London Metal Exchange cash, average, dollars per metric ton	2,548.63	2,020.61	2,162.24	2,060.31
Platts Metals Week North American, average, cents per pound	124.13	99.40	105.83	101.63

^eEstimated. ^pPreliminary. ^rRevised. -- Zero.

¹Data are rounded to no more than three significant digits, except prices; may not add to totals shown.

²May include revisions to previously published data.

³Reported zinc content in both zinc and lead concentrates.

⁴Smelter production plus imports for consumption minus domestic exports.

⁵Special High Grade Zinc.

TABLE 2
MINE AND SMELTER PRODUCTION OF ZINC
IN THE UNITED STATES¹

(Metric tons)

Period	Mine ²		Smelter ^e
	Zinc content	Recoverable	
2019:			
July	73,500	71,400	9,900
August	67,100	65,100	9,900
September	68,100	66,100	9,900
October	60,000	58,300	9,900
November	52,000	50,500	9,900
December	59,300	57,600	9,900
January–December	753,000	731,000	115,000
2020:			
January	57,700	56,000	10,000 ^r
February	60,600	58,800	10,000 ^r
March	61,900	60,100	11,000 ^r
April	39,300	38,200	11,000 ^r
May	48,500	47,000	12,000 ^r
June	49,100	47,600	12,000 ^r
July	59,700	57,900	14,000
January–July	377,000	366,000	80,000

^eEstimated. ^rRevised.

¹Data are rounded to no more than three significant digits; may not add to totals shown.

²Includes the zinc content in both lead and zinc concentrates.

TABLE 3
U.S. IMPORTS FOR CONSUMPTION OF ZINC¹

(Gross weight, unless otherwise specified)

Material	2019		2020			
	Quantity (metric tons)	Value (thousands)	July		January–July ²	
			Quantity (metric tons)	Value (thousands)	Quantity (metric tons)	Value (thousands)
Ore and concentrate (zinc content)	10	\$7	446	\$24	446	\$24
Unwrought:						
Refined zinc	830,000	2,190,000	66,000	140,000	433,000	948,000
Zinc alloys	1,530	4,480	34	112	367	944
Wrought:						
Bars, rods, profiles, wire	3,020	10,600	323	928	1,760	5,320
Plates, sheets, strip, foil	3,010	12,700	173	876	1,690	7,890
Ash and residues:						
Hard zinc spelter	20	17	--	--	--	--
Zinc dross and skimmings	3,730	5,950	251	374	2,160	3,010
Other (zinc content)	1,320	784	151	87	602	389
Other:						
Powders, flakes, dust	25,500	94,900	1,860	6,080	14,700	48,600
Waste and scrap	10,400	18,200	1,360	1,570	4,950	7,600
Chemicals:						
Lithopone	1,170	4,240	49	210	755	2,460
Zinc oxide	99,300	272,000	7,070	16,400	60,100	152,000
Zinc chloride	196	1,450	18	170	189	1,120
Zinc sulfate	72,100	64,700	5,360	3,970	51,700	39,500
Zinc sulfide	956	3,590	36	49	656	3,050

-- Zero.

¹Data are rounded to no more than three significant digits.

²May include revisions to previously published data.

Source: U.S. Census Bureau.

TABLE 4
U.S. IMPORTS OF ZINC, BY TYPE OF MATERIAL AND COUNTRY OR LOCALITY¹

(Metric tons, gross weight, unless otherwise specified)

Material and country or locality	General imports			Imports for consumption		
	2019	2020		2019	2020	
		July	January–July ²		July	January–July ²
Ore and concentrate (zinc content):						
Canada	10	--	--	10	--	--
China	--	446	446	--	446	446
Total	10	446	446	10	446	446
Refined zinc:						
Australia	--	--	33,000	--	--	--
Belgium	--	--	--	393	--	1
Brazil	11,300	5,620	21,700	11,300	2,370	13,200
Canada	517,000	41,900	284,000	517,000	41,900	284,000
China	49	--	102	5,770	--	102
Korea, Republic of	8,110	--	30,000	8,340	9,600	19,600
Mexico	142,000	10,100	88,400	142,000	10,100	88,400
Netherlands	--	--	--	3,420	--	--
Peru	59,300	1,940	27,800	59,300	1,940	27,800
Poland	268	--	--	268	--	--
Spain	14,500	20,000	20,000	81,900	--	123
Taiwan	62	11	21	62	11	21
Other	6	--	--	6	--	--
Total	753,000	79,600	505,000	830,000	66,000	433,000
Oxide:						
Australia	394	47	398	394	47	398
Belgium	30	--	--	30	--	--
Brazil	5	--	19	5	--	19
Canada	44,100	2,550	26,700	44,100	2,550	26,700
China	187	9	66	187	9	66
El Salvador	20	--	--	20	--	--
France	18	(3)	12	18	(3)	12
Germany	1,300	107	767	1,300	107	767
Greece	300	180	659	300	180	659
India	74	--	30	74	--	30
Indonesia	103	--	--	103	--	--
Israel	--	--	10	--	--	10
Italy	42	--	22	42	--	22
Japan	927	36	497	927	36	497
Korea, Republic of	96	--	57	96	--	57
Mexico	39,000	2,980	23,300	39,000	2,980	23,300
Netherlands	9,270	985	5,230	9,270	985	5,230
Peru	2,990	180	2,170	2,990	180	2,170
Russia	20	--	--	20	--	--
United Kingdom	425	--	28	425	--	28
Other	6	--	31	6	--	31
Total	99,300	7,070	60,100	99,300	7,070	60,100

-- Zero.

¹Data are rounded to no more than three significant digits; may not add to totals shown.

²May include revisions to previously published data.

³Less than ½ unit.

Source: U.S. Census Bureau.

TABLE 5
U.S. EXPORTS OF ZINC¹

(Gross weight, unless otherwise specified)

Material	2019		2020			
	Quantity (metric tons)	Value (thousands)	July		January–July ²	
			Quantity (metric tons)	Value (thousands)	Quantity (metric tons)	Value (thousands)
Ore and concentrate (zinc content)	796,000	\$1,320,000	72,400	\$94,100	152,000	\$198,000
Unwrought:						
Refined zinc	5,170	14,300	233	584	1,600	4,370
Zinc alloys	21,600	63,500	1,450	3,620	10,600	27,800
Wrought:						
Bars, rods, profiles, wire	10,200	30,300	866	2,680	5,130	15,900
Plates, sheets, strip, foil	6,190	24,500	344	1,290	2,830	10,600
Ash and residues:						
Hard zinc spelter	9,370	16,700	724	996	5,400	7,130
Other (zinc content)	24,900	38,600	1,970	2,670	12,200	15,300
Other:						
Powders, flakes, dust	13,400	48,500	831	2,790	7,740	25,300
Waste and scrap	30,800	40,200	1,130	1,210	13,000	15,300
Chemicals:						
Lithopone	170	905	51	193	183	793
Zinc oxide	15,100	30,900	6,090	5,610	15,300	21,200
Zinc chloride	185	316	108	129	319	582
Zinc sulfate	486	648	32	58	319	329
Zinc sulfide	2,070	17,300	27	573	802	6,630

¹Data are rounded to no more than three significant digits.

²May include revisions to previously published data.

Source: U.S. Census Bureau.

TABLE 6
U.S. EXPORTS OF ZINC, BY TYPE OF MATERIAL AND COUNTRY OR LOCALITY¹

(Metric tons, gross weight, unless otherwise specified)

Material and country or locality	2019	2020	
		July	January-July ²
Ore and concentrate (zinc content):			
Australia	64,100	20,900	20,900
Belgium	107,000	--	2,800
Brazil	7,030	--	--
Canada	268,000	35,700	82,900
Finland	29,400	--	--
Germany	29,700	--	--
Italy	33,800	--	--
Japan	38,500	2,640	18,700
Korea, Republic of	69,200	13,100	26,800
Mexico	10,700	--	--
Peru	5,000	--	120
Spain	116,000	--	--
Switzerland	17,500	--	--
Other	83	4	11
Total	796,000	72,400	152,000
Refined zinc:			
Australia	46	--	7
Canada	928	91	482
China	502	--	--
Colombia	98	74	74
Guatemala	17	--	10
India	132	42	243
Indonesia	375	--	--
Malaysia	625	--	--
Mexico	1,800	25	614
Panama	39	--	--
South Africa	438	--	--
Vietnam	40	--	164
Other	135	--	1
Total	5,170	233	1,600
Oxide:			
Australia	127	--	503
Belgium	90	--	41
Brazil	453	11	218
Canada	4,860	179	1,850
China	457	13	180
France	14	6	221
Germany	131	10	121
Guyana	124	--	38
India	825	38	329
Malaysia	17	--	61
Mexico	7,140	5,760	11,100
Poland	177	32	80
United Kingdom	127	1	209
Other	612	32	395
Total	15,100	6,090	15,300

-- Zero.

¹Data are rounded to no more than three significant digits; may not add to totals shown.

²May include revisions to previously published data.

Source: U.S. Census Bureau.

TABLE 7
AVERAGE PRICES FOR SPECIAL HIGH GRADE ZINC

Period	North American		London Metal Exchange	
	Premium	Price ¹	cash ²	
	¢/lb.	¢/lb.	¢/lb.	\$/t
2019:				
July	7.9	118.64	110.72	2,440.96
August	8.3	111.45	103.17	2,274.60
September	8.7	113.93	105.20	2,319.16
October	8.8	119.71	110.90	2,444.99
November	8.8	119.11	110.33	2,432.43
December	8.6	111.70	103.12	2,273.40
January–December	8.5	124.13	115.60	2,548.63
2020:				
January	8.5	115.42	106.89	2,356.60
February	8.5	104.69	96.16	2,119.90
March	8.4	94.79	86.42	1,905.33
April	8.5	94.39	85.91	1,894.08
May	7.8	96.87	89.06	1,963.40
June	7.8	99.40	91.65	2,020.61
July	7.8	105.83	98.08	2,162.24
January–July	8.2	101.63	93.45	2,060.31

¹Platts Metals Week North American price. Based on the London Metal Exchange cash price plus the North American premium.

²Average of the cash buyer price and the cash seller and settlement price.

Source: Platts Metals Week.

TABLE 8
LONDON METAL EXCHANGE (LME) STOCKS OF SPECIAL HIGH GRADE ZINC, END OF PERIOD

(Metric tons)

Period	United States			Asia	Europe	Other	Total LME
	Baltimore, MD	New Orleans, LA	Total				
2019:							
July	--	41,925	41,925	4,475	32,325	625	79,350
August	--	33,875	33,875	4,150	28,375	575	66,975
September	--	27,175	27,175	18,275	20,725	575	66,750
October	--	18,850	18,850	17,975	17,100	575	54,500
November	--	12,475	12,475	25,175	20,975	575	59,200
December	--	6,125	6,125	24,350	20,350	375	51,200
2020:							
January	--	4,150	4,150	25,950	19,300	375	49,775
February	--	4,100	4,100	30,750	40,000	350	75,200
March	--	4,000	4,000	36,650	32,950	200	73,800
April	--	4,200	4,200	47,325	49,225	100	100,850
May	--	4,175	4,175	44,700	50,675	25	99,575
June	3,825	16,675	20,500	60,425	41,625	--	122,550
July	475	46,075	46,550	96,525	44,900	--	187,975

-- Zero.

Source: London Metal Exchange, Ltd.