

Mineral Industry Surveys

For information, contact:

Amy C. Tolcin, Zinc Commodity Specialist (Acting)
 National Minerals Information Center
 U.S. Geological Survey
 989 National Center
 Reston, VA 20192
 Telephone: (703) 648-4940 Fax: (703) 648-7757
 Email: atolcin@usgs.gov

Hodan A. Fatah (Data)
 Telephone: (703) 648-4971
 Fax: (703) 648-7975
 Email: hfatah@usgs.gov

Internet: <https://www.usgs.gov/centers/nmic>

ZINC IN JUNE 2020

Domestic mine production (recoverable) of zinc in June 2020 was 47,600 metric tons (t) (tables 1, 2). Average daily mine production in June was 1,590 t, 5% more than that in the previous month but 32% less than that in June 2019 (fig. 1).

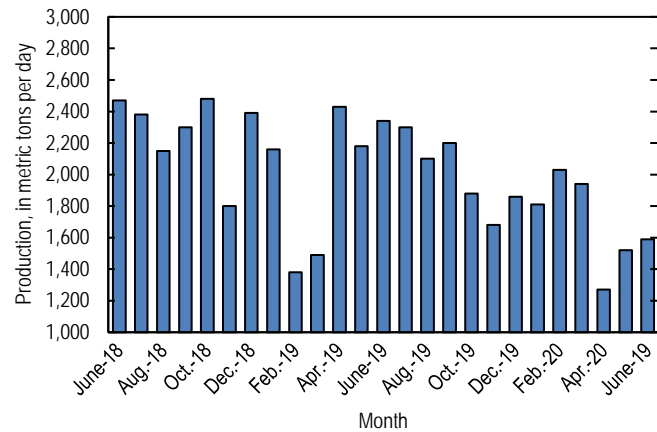


Figure 1. Average daily domestic zinc mine production (recoverable) from June 2018 through June 2020.

Stocks and Prices

Global London Metal Exchange Ltd. (LME) stocks of Special High Grade (SHG) zinc were 122,550 t at the end of June 2020, 23% more than stocks at the end of May and 29% more than stocks at the end of June 2019 (fig. 2, table 8). Reported off-warrant stocks of SHG zinc in LME-approved warehouses at the end of June 2020 were about 73,100 t, an increase from 40,900 t reported at the end of May (London Metal Exchange Ltd., 2020a, b).

The monthly average Platts Metals Week North American SHG zinc price in June 2020 was \$0.99 per pound, slightly more than that in the previous month but 21% lower than that in June 2019. The June 2020 average LME cash price for SHG zinc was

\$2,020.61 per metric ton (\$0.92 per pound), slightly more than that in May but 22% lower than that in June 2019 (fig. 3, table 7).

The North American premium to the LME cash price in June 2020 averaged 7.8 cents per pound, essentially unchanged from that in the previous month and 4% less than that in June 2019 (fig. 3, table 7).

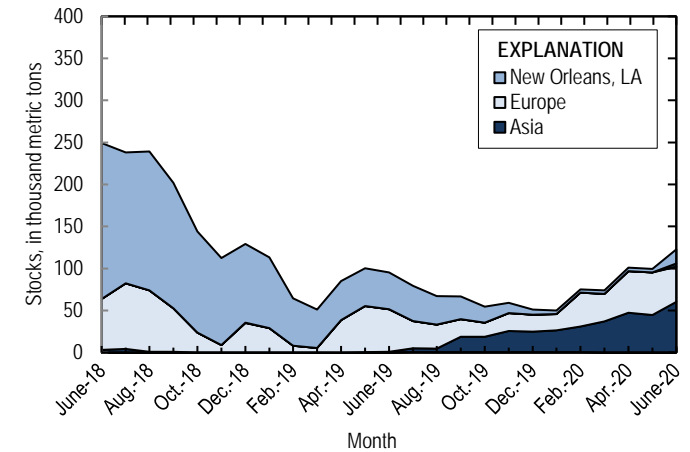


Figure 2. Global LME stocks of Special High Grade zinc, monthend, from June 2018 through June 2020. Source: London Metal Exchange Ltd.

References Cited

- London Metal Exchange Ltd., 2020a, Off warrant stock reporting June 2020: London, United Kingdom, London Metal Exchange Ltd. (Accessed September 11, 2020, via <https://www.lme.com/en-GB/Market-Data/Reports-and-data/Warehouse-and-stocks-reports/Off-warrant-stock-reporting>.)
- London Metal Exchange Ltd., 2020b, Off warrant stock reporting May 2020: London, United Kingdom, London Metal Exchange Ltd. (Accessed September 11, 2020, via <https://www.lme.com/en-GB/Market-Data/Reports-and-data/Warehouse-and-stocks-reports/Off-warrant-stock-reporting>.)

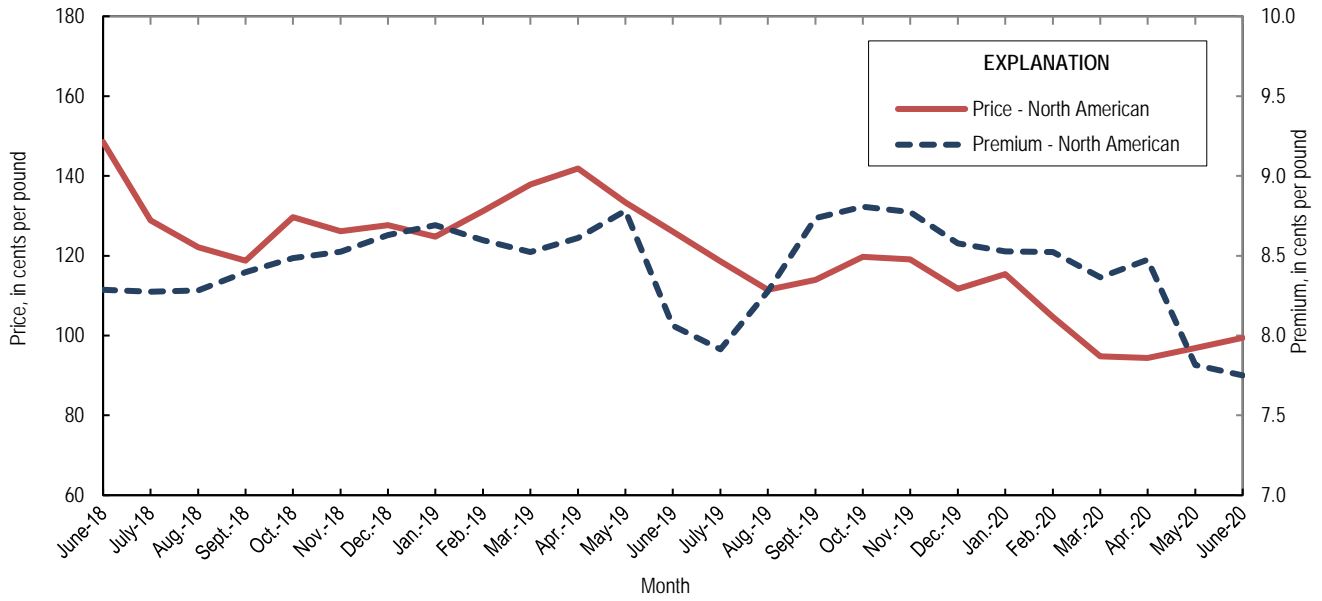


Figure 3. Average monthly North American price and premium for Special High Grade zinc from June 2018 through June 2020. Source: Platts Metals Week.

List services and web feed subscribers are the first to receive notification of USGS minerals information publications and data releases. For information on how to subscribe, go to <https://www.usgs.gov/centers/nmic/minerals-information-publication-list-services>.

TABLE 1
SALIENT ZINC STATISTICS¹

(Metric tons, unless otherwise specified)

	2019	2020		
	January– December ^p	May	June	January– June ²
Production:				
Mine, zinc content of concentrate ³	753,000	48,500	49,100	317,000
Mine, recoverable zinc ³	731,000	47,000	47,600	308,000
Smelter, refined zinc ^c	115,000	9,900	9,900	59,400
Consumption of refined zinc, apparent ⁴	939,000	71,600	56,600	425,000
Imports for consumption:				
Ore and concentrate (zinc content)	10	--	--	--
Refined zinc	830,000	61,800	46,800	367,000
Exports:				
Ore and concentrate (zinc content)	796,000	6,200	40,400	79,800
Refined zinc	5,170	74	77	1,360
Price:⁵				
London Metal Exchange cash, average, dollars per metric ton	2,548.63	1,963.40	2,020.61	2,043.32
Platts Metals Week North American, average, cents per pound	124.13	96.87	99.40	100.93

^cEstimated. ^pPreliminary. -- Zero.

¹Data are rounded to no more than three significant digits, except prices; may not add to totals shown.

²May include revisions to previously published data.

³Reported zinc content in both zinc and lead concentrates.

⁴Smelter production plus imports for consumption minus domestic exports.

⁵Special High Grade Zinc.

TABLE 2
MINE AND SMELTER PRODUCTION OF ZINC
IN THE UNITED STATES¹

(Metric tons)

Period	Mine ²		Smelter ^e
	Zinc content	Recoverable	
2019:			
June	71,800	70,300	9,900
July	73,500	71,400	9,900
August	67,100	65,100	9,900
September	68,100	66,100	9,900
October	60,000	58,300	9,900
November	52,000	50,500	9,900
December	59,300	57,600	9,900
January–December	753,000	731,000	115,000
2020:			
January	57,700	56,000	9,900
February	60,600	58,800	9,900
March	61,900	60,100	9,900
April	39,300	38,200	9,900
May	48,500	47,000	9,900
June	49,100	47,600	9,900
January–June	317,000	308,000	59,400

^eEstimated.

¹Data are rounded to no more than three significant digits; may not add to totals shown.

²Includes the zinc content in both lead and zinc concentrates.

TABLE 3
U.S. IMPORTS FOR CONSUMPTION OF ZINC¹

(Gross weight, unless otherwise specified)

Material	2019		2020			
	Quantity (metric tons)	Value (thousands)	June		January–June ²	
			Quantity (metric tons)	Value (thousands)	Quantity (metric tons)	Value (thousands)
Ore and concentrate (zinc content)	10	\$7	--	--	--	--
Unwrought:						
Refined zinc	830,000	2,190,000	46,800	\$95,500	367,000	\$807,000
Zinc alloys	1,530	4,480	10	57	333	832
Wrought:						
Bars, rods, profiles, wire	3,020	10,600	154	439	1,440	4,390
Plates, sheets, strip, foil	3,010	12,700	516	2,800	1,520	7,010
Ash and residues:						
Hard zinc spelter	20	17	--	--	--	--
Zinc dross and skimmings	3,730	5,950	296	400	1,910	2,640
Other (zinc content)	1,320	784	178	118	452	302
Other:						
Powders, flakes, dust	25,500	94,900	2,040	6,470	12,800	42,500
Waste and scrap	10,400	18,200	786	1,220	3,590	6,030
Chemicals:						
Lithopone	1,170	4,240	24	136	706	2,240
Zinc oxide	99,300	272,000	7,210	17,800	53,000	135,000
Zinc chloride	196	1,450	7	58	171	955
Zinc sulfate	72,100	64,700	7,590	5,400	46,300	35,500
Zinc sulfide	956	3,590	68	182	620	3,000

-- Zero.

¹Data are rounded to no more than three significant digits.

²May include revisions to previously published data.

Source: U.S. Census Bureau.

TABLE 4
U.S. IMPORTS OF ZINC, BY TYPE OF MATERIAL AND COUNTRY OR LOCALITY¹

(Metric tons, gross weight, unless otherwise specified)

Material and country or locality	General imports			Imports for consumption		
	2019	2020		2019	2020	
		June	January–June ²		June	January–June ²
Ore and concentrate (zinc content), Canada	10	--	--	10	--	--
Refined zinc:						
Australia	--	33,000	33,000	--	--	--
Belgium	--	--	--	393	--	1
Brazil	11,300	9,100	16,100	11,300	3,840	10,800
Canada	517,000	31,100	242,000	517,000	31,100	242,000
China	49	6	102	5,770	6	102
Korea, Republic of	8,110	--	30,000	8,340	--	10,000
Mexico	142,000	10,300	78,200	142,000	10,300	78,200
Netherlands	--	--	--	3,420	--	--
Peru	59,300	1,570	25,900	59,300	1,570	25,900
Poland	268	--	--	268	--	--
Spain	14,500	--	--	81,900	25	123
Taiwan	62	7	10	62	7	10
Other	6	--	--	6	--	--
Total	753,000	85,100	425,000	830,000	46,800	367,000
Oxide:						
Australia	394	69	351	394	69	351
Belgium	30	--	--	30	--	--
Brazil	5	19	19	5	19	19
Canada	44,100	2,790	24,200	44,100	2,790	24,200
China	187	32	57	187	32	57
El Salvador	20	--	--	20	--	--
France	18	7	11	18	7	11
Germany	1,300	30	660	1,300	30	660
Greece	300	60	479	300	60	479
India	74	5	30	74	5	30
Indonesia	103	--	--	103	--	--
Israel	--	--	10	--	--	10
Italy	42	--	22	42	--	22
Japan	927	25	461	927	25	461
Korea, Republic of	96	(3)	57	96	(3)	57
Mexico	39,000	2,890	20,300	39,000	2,890	20,300
Netherlands	9,270	912	4,250	9,270	912	4,250
Peru	2,990	368	1,990	2,990	368	1,990
Russia	20	--	--	20	--	--
United Kingdom	425	--	28	425	--	28
Other	6	2	31	6	2	31
Total	99,300	7,210	53,000	99,300	7,210	53,000

-- Zero.

¹Data are rounded to no more than three significant digits; may not add to totals shown.

²May include revisions to previously published data.

³Less than ½ unit.

Source: U.S. Census Bureau.

TABLE 5
U.S. EXPORTS OF ZINC¹

(Gross weight, unless otherwise specified)

Material	2019		2020			
	Quantity (metric tons)	Value (thousands)	June		January–June ²	
			Quantity (metric tons)	Value (thousands)	Quantity (metric tons)	Value (thousands)
Ore and concentrate (zinc content)	796,000	\$1,320,000	40,400	\$53,400	79,800	\$104,000
Unwrought:						
Refined zinc	5,170	14,300	77	213	1,360	3,790
Zinc alloys	21,600	63,500	1,520	3,710	9,170	24,100
Wrought:						
Bars, rods, profiles, wire	10,200	30,300	839	2,500	4,270	13,300
Plates, sheets, strip, foil	6,190	24,500	187	673	2,480	9,320
Ash and residues:						
Hard zinc spelter	9,370	16,700	585	754	4,680	6,140
Other (zinc content)	24,900	38,600	1,180	1,380	10,200	12,600
Other:						
Powders, flakes, dust	13,400	48,500	1,070	2,960	6,910	22,500
Waste and scrap	30,800	40,200	1,440	1,800	11,900	14,100
Chemicals:						
Lithopone	170	905	40	79	132	601
Zinc oxide	15,100	30,900	4,760	4,720	9,230	15,600
Zinc chloride	185	316	32	46	210	453
Zinc sulfate	486	648	6	8	288	270
Zinc sulfide	2,070	17,300	66	704	775	6,060

¹Data are rounded to no more than three significant digits.

²May include revisions to previously published data.

Source: U.S. Census Bureau.

TABLE 6
U.S. EXPORTS OF ZINC, BY TYPE OF MATERIAL AND COUNTRY OR LOCALITY¹

(Metric tons, gross weight, unless otherwise specified)

Material and country or locality	2019	2020	
		June	January-June ²
Ore and concentrate (zinc content):			
Australia	64,100	--	--
Belgium	107,000	2,800	2,800
Brazil	7,030	--	--
Canada	268,000	25,300	47,200
Finland	29,400	--	--
Germany	29,700	--	--
Italy	33,800	--	--
Japan	38,500	9,560	16,100
Korea, Republic of	69,200	2,690	13,700
Mexico	10,700	--	--
Peru	5,000	--	120
Spain	116,000	--	--
Switzerland	17,500	--	--
Other	83	--	6
Total	796,000	40,400	79,800
Refined zinc:			
Australia	46	--	7
Canada	928	50	391
China	502	--	--
Colombia	98	--	--
Guatemala	17	--	10
India	132	--	201
Indonesia	375	--	--
Malaysia	625	--	--
Mexico	1,800	27	588
Panama	39	--	--
South Africa	438	--	--
Vietnam	40	--	164
Other	135	--	1
Total	5,170	77	1,360
Oxide:			
Australia	127	121	503
Belgium	90	1	41
Brazil	453	42	207
Canada	4,860	165	1,670
China	457	41	166
France	14	--	214
Germany	131	16	111
Guyana	124	18	38
India	825	16	291
Malaysia	17	40	61
Mexico	7,140	4,260	5,310
Poland	177	--	48
United Kingdom	127	(3)	209
Other	612	42	363
Total	15,100	4,760	9,230

-- Zero.

¹Data are rounded to no more than three significant digits; may not add to totals shown.

²May include revisions to previously published data.

³Less than ½ unit.

Source: U.S. Census Bureau.

TABLE 7
AVERAGE PRICES FOR SPECIAL HIGH GRADE ZINC

Period	North American		London Metal Exchange	
	Premium	Price ¹	cash ²	
	¢/lb.	¢/lb.	¢/lb.	\$/t
2019:				
June	8.1	126.07	118.01	2,601.56
July	7.9	118.64	110.72	2,440.96
August	8.3	111.45	103.17	2,274.60
September	8.7	113.93	105.20	2,319.16
October	8.8	119.71	110.90	2,444.99
November	8.8	119.11	110.33	2,432.43
December	8.6	111.70	103.12	2,273.40
January–December	8.5	124.13	115.60	2,548.63
2020:				
January	8.5	115.42	106.89	2,356.60
February	8.5	104.69	96.16	2,119.90
March	8.4	94.79	86.42	1,905.33
April	8.5	94.39	85.91	1,894.08
May	7.8	96.87	89.06	1,963.40
June	7.8	99.40	91.65	2,020.61
January–June	8.2	100.93	92.68	2,043.32

¹Platts Metals Week North American price. Based on the London Metal Exchange cash price plus the North American premium.

²Average of the cash buyer price and the cash seller and settlement price.

Source: Platts Metals Week.

TABLE 8
LONDON METAL EXCHANGE (LME) STOCKS OF SPECIAL HIGH GRADE ZINC, END OF PERIOD

(Metric tons)

Period	United States			Asia	Europe	Other	Total LME
	Baltimore, MD	New Orleans, LA	Total				
2019:							
June	--	43,825	43,825	600	50,500	200	95,125
July	--	41,925	41,925	4,475	32,325	625	79,350
August	--	33,875	33,875	4,150	28,375	575	66,975
September	--	27,175	27,175	18,275	20,725	575	66,750
October	--	18,850	18,850	17,975	17,100	575	54,500
November	--	12,475	12,475	25,175	20,975	575	59,200
December	--	6,125	6,125	24,350	20,350	375	51,200
2020:							
January	--	4,150	4,150	25,950	19,300	375	49,775
February	--	4,100	4,100	30,750	40,000	350	75,200
March	--	4,000	4,000	36,650	32,950	200	73,800
April	--	4,200	4,200	47,325	49,225	100	100,850
May	--	4,175	4,175	44,700	50,675	25	99,575
June	3,825	16,675	20,500	60,425	41,625	--	122,550

-- Zero.

Source: London Metal Exchange, Ltd.