

# Mineral Industry Surveys

## For information, contact:

Amy C. Tolcin, Zinc Commodity Specialist (Acting)  
 National Minerals Information Center  
 U.S. Geological Survey  
 989 National Center  
 Reston, VA 20192  
 Telephone: (703) 648-4940 Fax: (703) 648-7757  
 Email: atolcin@usgs.gov

Hodan A. Fatah (Data)  
 Telephone: (703) 648-4971  
 Fax: (703) 648-7975  
 Email: hfatah@usgs.gov

**Internet:** <https://www.usgs.gov/centers/nmic>

## ZINC IN MAY 2020

Domestic mine production (recoverable) of zinc in May 2020 was 47,000 metric tons (t) (tables 1, 2). Average daily mine production in May was 1,520 t, 19% more than that in the previous month but 30% less than that in May 2019 (fig. 1).

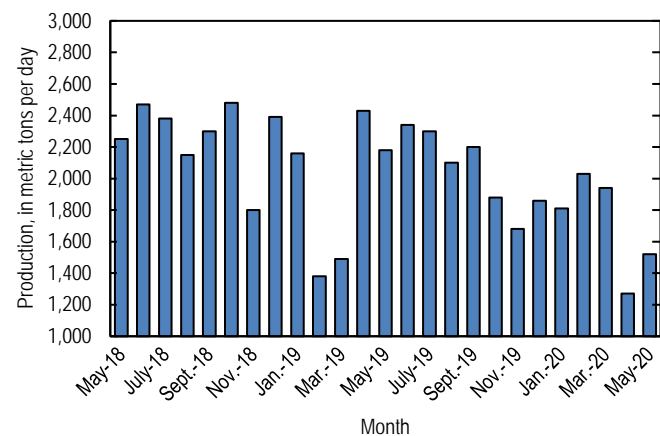


Figure 1. Average daily domestic zinc mine production (recoverable) from May 2018 through May 2020.

## Stocks and Prices

Global London Metal Exchange Ltd. (LME) stocks of Special High Grade (SHG) zinc were 99,575 t at the end of May 2020, slightly less than stocks at the end of April and essentially unchanged from stocks at the end of May 2019 (fig. 2, table 8). Reported off-warrant stocks of SHG zinc in LME-approved warehouses at the end of May 2020 were about 40,900 t, an increase from 13,200 t reported at the end of April (London Metal Exchange Ltd, 2020a, b).

The monthly average Platts Metals Week North American SHG zinc price in May 2020 was \$0.97 per pound, slightly more than that in the previous month but 27% lower than that in May

2019. The May 2020 average LME cash price for SHG zinc was \$1,963.40 per metric ton (\$0.89 per pound), 4% more than that in April but 29% lower than that in May 2019 (fig. 3, table 7).

The North American premium to the LME cash price in May 2020 averaged 7.8 cents per pound, 8% less than that in the previous month and 11% less than that in May 2019 (fig. 3, table 7).

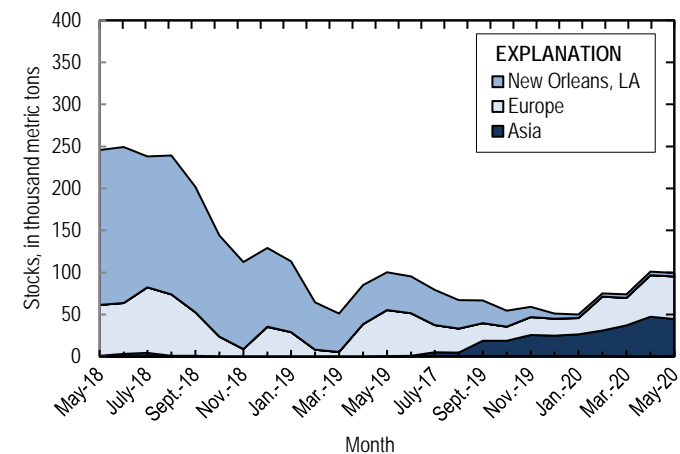


Figure 2. Global LME stocks of Special High Grade zinc, monthend, from May 2018 through May 2020. Source: London Metal Exchange Ltd.

## References Cited

- London Metal Exchange Ltd., 2020a, Off warrant stock reporting April 2020: London, United Kingdom, London Metal Exchange Ltd. (Accessed July 24, 2020, via <https://www.lme.com/en-GB/Market-Data/Reports-and-data/Warehouse-and-stocks-reports/Off-warrant-stock-reporting>.)
- London Metal Exchange Ltd., 2020b, Off warrant stock reporting May 2020: London, United Kingdom, London Metal Exchange Ltd. (Accessed July 24, 2020, via <https://www.lme.com/en-GB/Market-Data/Reports-and-data/Warehouse-and-stocks-reports/Off-warrant-stock-reporting>.)

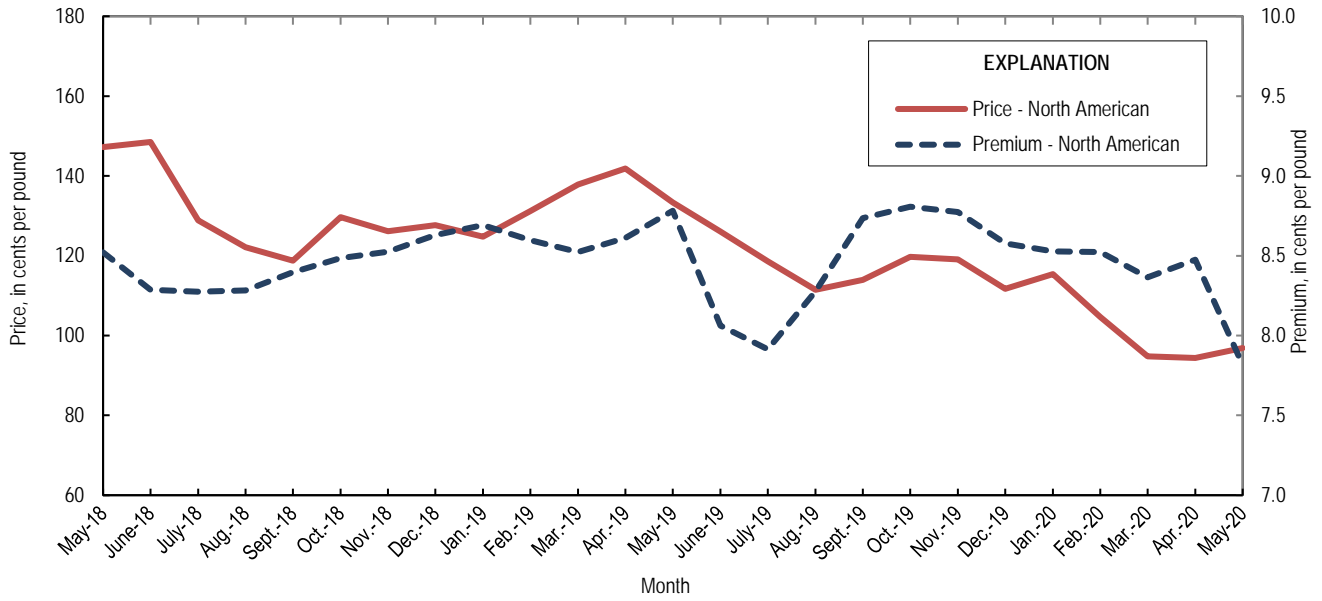


Figure 3. Average monthly North American price and premium for Special High Grade zinc from May 2018 through May 2020. Source: Platts Metals Week.

*List services and web feed subscribers are the first to receive notification of USGS minerals information publications and data releases. For information on how to subscribe, go to <https://www.usgs.gov/centers/nmic/minerals-information-publication-list-services>.*

TABLE 1  
SALIENT ZINC STATISTICS<sup>1</sup>

(Metric tons, unless otherwise specified)

	2019	2020		
	January– December <sup>p</sup>	April	May	January– May <sup>2</sup>
<b>Production:</b>				
Mine, zinc content of concentrate <sup>3</sup>	753,000	39,400	48,500	268,000
Mine, recoverable zinc <sup>3</sup>	731,000	38,200	47,000	260,000
Smelter, refined zinc <sup>c</sup>	115,000	9,900	9,900	49,500
Consumption of refined zinc, apparent <sup>4</sup>	939,000	74,400	71,600	368,000
<b>Imports for consumption:</b>				
Ore and concentrate (zinc content)	10	--	--	--
Refined zinc	830,000	64,700	61,800	320,000
<b>Exports:</b>				
Ore and concentrate (zinc content)	796,000	11,000	6,200	39,400
Refined zinc	5,170	178	74	1,290
<b>Price:<sup>5</sup></b>				
London Metal Exchange cash, average, dollars per metric ton	2,548.63	1,894.08	1,963.40	2,047.86
Platts Metals Week North American, average, cents per pound	124.13	94.39	96.87	101.23

<sup>6</sup>Estimated. <sup>p</sup>Preliminary. -- Zero.

<sup>1</sup>Data are rounded to no more than three significant digits, except prices; may not add to totals shown.

<sup>2</sup>May include revisions to previously published data.

<sup>3</sup>Reported zinc content in both zinc and lead concentrates.

<sup>4</sup>Smelter production plus imports for consumption minus domestic exports.

<sup>5</sup>Special High Grade Zinc.

TABLE 2  
MINE AND SMELTER PRODUCTION OF ZINC  
IN THE UNITED STATES<sup>1</sup>

(Metric tons)

Period	Mine <sup>2</sup>		Smelter <sup>e</sup>
	Zinc content	Recoverable	
2019:			
May	69,500	67,500	9,900
June	71,800	70,300	9,900
July	73,500	71,400	9,900
August	67,100	65,100	9,900
September	68,100	66,100	9,900
October	60,000	58,300 <sup>f</sup>	9,900
November	52,000	50,500 <sup>f</sup>	9,900
December	59,300	57,600	9,900
January–December	753,000	731,000	115,000
2020:			
January	57,700	56,000	9,900
February	60,600	58,800	9,900
March	61,900	60,100	9,900
April	39,400	38,200	9,900
May	48,500	47,000	9,900
January–May	268,000	260,000	49,500

<sup>e</sup>Estimated. <sup>f</sup>Revised.

<sup>1</sup>Data are rounded to no more than three significant digits; may not add to totals shown.

<sup>2</sup>Includes the zinc content in both lead and zinc concentrates.

TABLE 3  
U.S. IMPORTS FOR CONSUMPTION OF ZINC<sup>1</sup>

(Gross weight, unless otherwise specified)

Material	2019		2020			
	Quantity (metric tons)	Value (thousands)	May		January–May <sup>2</sup>	
			Quantity (metric tons)	Value (thousands)	Quantity (metric tons)	Value (thousands)
Ore and concentrate (zinc content)	10	\$7	--	--	--	--
Unwrought:						
Refined zinc	830,000	2,190,000	61,800	\$126,000	320,000	\$712,000
Zinc alloys	1,530	4,480	78	158	323	775
Wrought:						
Bars, rods, profiles, wire	3,020	10,600	189	517	1,280	3,950
Plates, sheets, strip, foil	3,010	12,700	288	1,200	1,000	4,210
Ash and residues:						
Hard zinc spelter	20	17	--	--	--	--
Zinc dross and skimmings	3,730	5,950	91	120	1,610	2,240
Other (zinc content)	1,320	784	32	18	274	184
Other:						
Powders, flakes, dust	25,500	94,900	2,210	6,940	10,800	36,000
Waste and scrap	10,400	18,200	253	322	2,800	4,810
Chemicals:						
Lithopone	1,170	4,240	270	412	682	2,110
Zinc oxide	99,300	272,000	6,720	16,400	45,800	118,000
Zinc chloride	196	1,450	27	224	164	896
Zinc sulfate	72,100	64,700	8,070	6,420	38,800	30,100
Zinc sulfide	956	3,590	135	624	552	2,820

-- Zero.

<sup>1</sup>Data are rounded to no more than three significant digits.

<sup>2</sup>May include revisions to previously published data.

Source: U.S. Census Bureau.

TABLE 4  
U.S. IMPORTS OF ZINC, BY TYPE OF MATERIAL AND COUNTRY OR LOCALITY<sup>1</sup>

(Metric tons, gross weight, unless otherwise specified)

Material and country or locality	General imports			Imports for consumption		
	2019	2020		2019	2020	
		May	January–May <sup>2</sup>		May	January–May <sup>2</sup>
Ore and concentrate (zinc content), Canada	10	--	--	10	--	--
Refined zinc:						
Belgium	--	--	--	393	--	1
Brazil	11,300	1,960	7,000	11,300	1,960	7,000
Canada	517,000	38,400	211,000	517,000	38,400	211,000
China	49	88	95	5,770	88	95
Korea, Republic of	8,110	23,500	30,000	8,340	3,510	10,000
Mexico	142,000	14,600	68,000	142,000	14,600	68,000
Netherlands	--	--	--	3,420	--	--
Peru	59,300	3,180	24,300	59,300	3,180	24,300
Poland	268	--	--	268	--	--
Spain	14,500	--	--	81,900	--	98
Taiwan	62	--	3	62	--	3
Other	6	--	--	6	--	--
Total	753,000	81,800	340,000	830,000	61,800	320,000
Oxide:						
Australia	394	--	282	394	--	282
Belgium	30	--	--	30	--	--
Brazil	5	--	--	5	--	--
Canada	44,100	2,960	21,400	44,100	2,960	21,400
China	187	12	24	187	12	24
El Salvador	20	--	--	20	--	--
France	18	--	5	18	--	5
Germany	1,300	170	630	1,300	170	630
Greece	300	40	419	300	40	419
India	74	--	24	74	--	24
Indonesia	103	--	--	103	--	--
Israel	--	--	10	--	--	10
Italy	42	3	22	42	3	22
Japan	927	106	436	927	106	436
Korea, Republic of	96	1	57	96	1	57
Mexico	39,000	1,960	17,500	39,000	1,960	17,500
Netherlands	9,270	970	3,340	9,270	970	3,340
Peru	2,990	501	1,620	2,990	501	1,620
Russia	20	--	--	20	--	--
United Kingdom	425	(3)	28	425	(3)	28
Other	6	1	29	6	1	29
Total	99,300	6,720	45,800	99,300	6,720	45,800

-- Zero.

<sup>1</sup>Data are rounded to no more than three significant digits; may not add to totals shown.

<sup>2</sup>May include revisions to previously published data.

<sup>3</sup>Less than ½ unit.

Source: U.S. Census Bureau.

TABLE 5  
U.S. EXPORTS OF ZINC<sup>1</sup>

(Gross weight, unless otherwise specified)

Material	2019		2020			
	Quantity (metric tons)	Value (thousands)	May		January–May <sup>2</sup>	
			Quantity (metric tons)	Value (thousands)	Quantity (metric tons)	Value (thousands)
Ore and concentrate (zinc content)	796,000	\$1,320,000	6,200	\$7,900	39,400	\$50,500
Unwrought:						
Refined zinc	5,170	14,300	74	200	1,290	3,580
Zinc alloys	21,600	63,500	1,110	2,800	7,650	20,400
Wrought:						
Bars, rods, profiles, wire	10,200	30,300	645	1,880	3,430	10,800
Plates, sheets, strip, foil	6,190	24,500	268	904	2,300	8,650
Ash and residues:						
Hard zinc spelter	9,370	16,700	1,040	1,310	4,100	5,390
Other (zinc content)	24,900	38,600	1,750	1,860	9,010	11,300
Other:						
Powders, flakes, dust	13,400	48,500	1,640	5,560	5,840	19,600
Waste and scrap	30,800	40,200	1,240	1,350	10,400	12,300
Chemicals:						
Lithopone	170	905	5	52	92	521
Zinc oxide	15,100	30,900	955	2,420	4,470	10,900
Zinc chloride	185	316	14	26	178	407
Zinc sulfate	486	648	18	37	282	262
Zinc sulfide	2,070	17,300	36	918	709	5,350

<sup>1</sup>Data are rounded to no more than three significant digits.

<sup>2</sup>May include revisions to previously published data.

Source: U.S. Census Bureau.

TABLE 6  
U.S. EXPORTS OF ZINC, BY TYPE OF MATERIAL AND COUNTRY OR LOCALITY<sup>1</sup>

(Metric tons, gross weight, unless otherwise specified)

Material and country or locality	2019	2020	
		May	January-May <sup>2</sup>
<b>Ore and concentrate (zinc content):</b>			
Australia	64,100	--	--
Belgium	107,000	--	--
Brazil	7,030	--	--
Canada	268,000	3,560	21,800
Finland	29,400	--	--
Germany	29,700	--	--
Italy	33,800	--	--
Japan	38,500	--	6,500
Korea, Republic of	69,200	2,640	11,000
Mexico	10,700	--	--
Peru	5,000	--	120
Spain	116,000	--	--
Switzerland	17,500	--	--
Other	83	--	6
<b>Total</b>	<b>796,000</b>	<b>6,200</b>	<b>39,400</b>
<b>Refined zinc:</b>			
Australia	46	--	7
Canada	928	68	340
China	502	--	--
Colombia	98	--	--
Guatemala	17	--	10
India	132	--	201
Indonesia	375	--	--
Malaysia	625	--	--
Mexico	1,800	7	561
Panama	39	--	--
South Africa	438	--	--
Vietnam	40	--	164
Other	135	<sup>(3)</sup>	1
<b>Total</b>	<b>5,170</b>	<b>74</b>	<b>1,290</b>
<b>Oxide:</b>			
Australia	127	148	382
Belgium	90	2	41
Brazil	453	25	165
Canada	4,860	298	1,500
China	457	31	125
France	14	59	214
Germany	131	--	95
Guyana	124	--	20
India	825	196	275
Mexico	7,140	118	1,050
Poland	177	16	48
Thailand	123	<sup>(3)</sup>	4
United Kingdom	127	2	208
Other	506	57	338
<b>Total</b>	<b>15,100</b>	<b>955</b>	<b>4,470</b>

-- Zero.

<sup>1</sup>Data are rounded to no more than three significant digits; may not add to totals shown.

<sup>2</sup>May include revisions to previously published data.

<sup>3</sup>Less than ½ unit.

Source: U.S. Census Bureau.



TABLE 7  
AVERAGE PRICES FOR SPECIAL HIGH GRADE ZINC

Period	North American		London Metal Exchange	
	Premium	Price <sup>1</sup>	cash <sup>2</sup>	
	¢/lb.	¢/lb.	¢/lb.	\$/t
2019:				
May	8.8	133.37	124.59	2,746.79
June	8.1	126.07	118.01	2,601.56
July	7.9	118.64	110.72	2,440.96
August	8.3	111.45	103.17	2,274.60
September	8.7	113.93	105.20	2,319.16
October	8.8	119.71	110.90	2,444.99
November	8.8	119.11	110.33	2,432.43
December	8.6	111.70	103.12	2,273.40
January–December	8.5	124.13	115.60	2,548.63
2020:				
January	8.5	115.42	106.89	2,356.60
February	8.5	104.69	96.16	2,119.90
March	8.4	94.79	86.42	1,905.33
April	8.5	94.39	85.91	1,894.08
May	7.8	96.87	89.06	1,963.40
January–May	8.3	101.23	92.89	2,047.86

<sup>1</sup>Platts Metals Week North American price. Based on the London Metal Exchange cash price plus the North American premium.

<sup>2</sup>Average of the cash buyer price and the cash seller and settlement price.

Source: Platts Metals Week.

TABLE 8  
LONDON METAL EXCHANGE (LME) STOCKS OF SPECIAL HIGH GRADE ZINC, END OF PERIOD

(Metric tons)

Period	United States		Asia	Europe	Other	Total LME
	New Orleans, LA	Total				
<b>2019:</b>						
May	44,900	44,900	325	54,900	250	100,375
June	43,825	43,825	600	50,500	200	95,125
July	41,925	41,925	4,475	32,325	625	79,350
August	33,875	33,875	4,150	28,375	575	66,975
September	27,175	27,175	18,275	20,725	575	66,750
October	18,850	18,850	17,975	17,100	575	54,500
November	12,475	12,475	25,175	20,975	575	59,200
December	6,125	6,125	24,350	20,350	375	51,200
<b>2020:</b>						
January	4,150	4,150	25,950	19,300	375	49,775
February	4,100	4,100	30,750	40,000	350	75,200
March	4,000	4,000	36,650	32,950	200	73,800
April	4,200	4,200	47,325	49,225	100	100,850
May	4,175	4,175	44,700	50,675	25	99,575

Source: London Metal Exchange, Ltd.