

Mineral Industry Surveys

For information, contact:

Amy C. Tolcin, Zinc Commodity Specialist (Acting)
 National Minerals Information Center
 U.S. Geological Survey
 989 National Center
 Reston, VA 20192
 Telephone: (703) 648-4940 Fax: (703) 648-7757
 Email: atolcin@usgs.gov

Hodan A. Fatah (Data)
 Telephone: (703) 648-4971
 Fax: (703) 648-7975
 Email: hfatah@usgs.gov

Internet: <https://www.usgs.gov/centers/nmic>

ZINC IN APRIL 2020

Domestic mine production (recoverable) of zinc in April 2020 was 38,200 metric tons (t) (tables 1, 2). Average daily mine production in April was 1,270 t, 34% less than that in the previous month and 48% less than that in April 2019 (fig. 1).

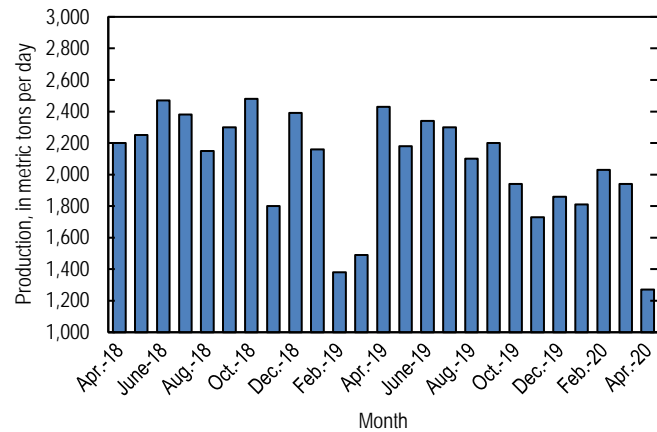


Figure 1. Average daily domestic zinc mine production (recoverable) from April 2018 through April 2020.

Stocks and Prices

Global London Metal Exchange Ltd. (LME) stocks of Special High Grade (SHG) zinc were 100,850 t at the end of April 2020, 37% more than stocks at the end of March and 19% more than at the end of April 2019 (fig. 2, table 8).

The monthly average Platts Metals Week North American SHG zinc price in April 2020 was \$0.94 per pound, essentially

unchanged from that in the previous month and 33% lower than that in April 2019. The April 2020 average LME cash price for SHG zinc was \$1,894.08 per metric ton (\$0.86 per pound), essentially unchanged from that in March and 36% lower than that in April 2019 (fig. 3, table 7).

The North American premium to the LME cash price in April 2020 averaged 8.5 cents per pound, slightly more than that in the previous month but slightly less than that in April 2019 (fig. 3, table 7).

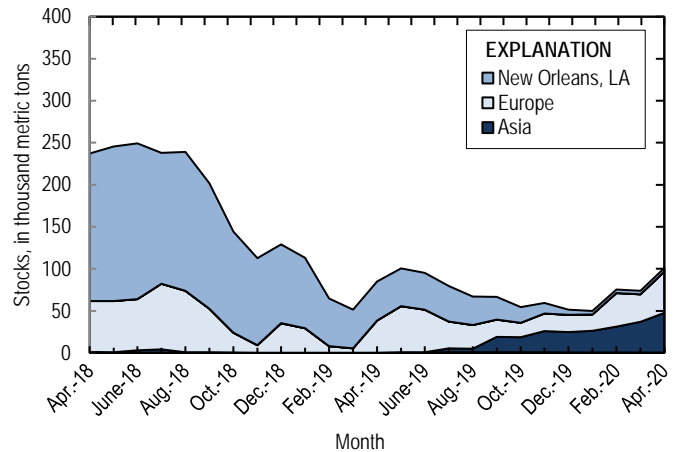


Figure 2. Global LME stocks of Special High Grade zinc, monthend, from April 2018 through April 2020. Source: London Metal Exchange Ltd.

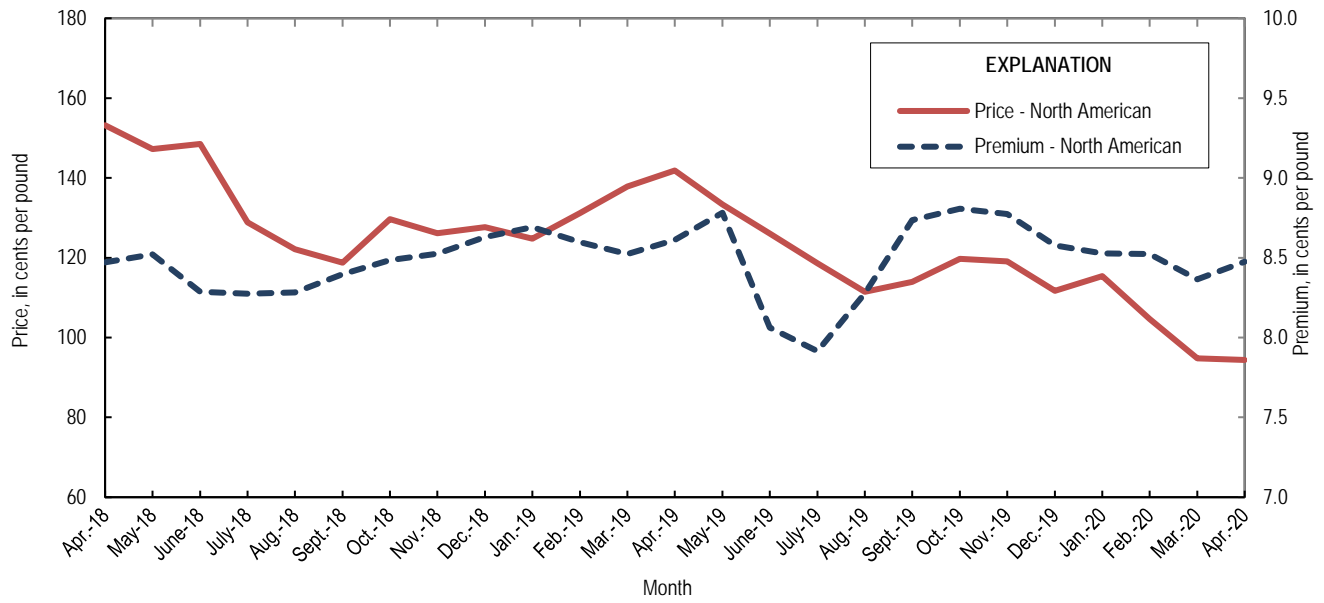


Figure 3. Average monthly North American price and premium for Special High Grade zinc from April 2018 through April 2020. Source: Platts Metals Week.

List services and web feed subscribers are the first to receive notification of USGS minerals information publications and data releases. For information on how to subscribe, go to <https://www.usgs.gov/centers/nmic/minerals-information-publication-list-services>.

TABLE 1
SALIENT ZINC STATISTICS¹

(Metric tons, unless otherwise specified)

	2019	2020		
	January– December ^p	March	April	January– April ²
Production:				
Mine, zinc content of concentrate ³	753,000	61,900	39,400	220,000
Mine, recoverable zinc ³	731,000	60,100	38,200	213,000
Smelter, refined zinc ^e	115,000	9,900	9,900	39,600
Consumption of refined zinc, apparent ⁴	939,000	82,900	74,400	297,000
Imports for consumption:				
Ore and concentrate (zinc content)	10	--	--	--
Refined zinc	830,000	73,400	64,700	258,000
Exports:				
Ore and concentrate (zinc content)	796,000 ^f	7,080	11,000	33,200
Refined zinc	5,170	393	178	1,210
Price:⁵				
London Metal Exchange cash, average, dollars per metric ton	2,548.63	1,905.33	1,894.08	2,068.98
Platts Metals Week North American, average, cents per pound	124.13	94.79	94.39	102.32

^eEstimated. ^pPreliminary. ^fRevised. -- Zero.

¹Data are rounded to no more than three significant digits, except prices; may not add to totals shown.

²May include revisions to previously published data.

³Reported zinc content in both zinc and lead concentrates.

⁴Smelter production plus imports for consumption minus domestic exports.

⁵Special High Grade Zinc.

TABLE 2
MINE AND SMELTER PRODUCTION OF ZINC
IN THE UNITED STATES¹

(Metric tons)

Period	Mine ²		Smelter ^e
	Zinc content	Recoverable	
2019:			
April	75,300	73,000	9,900
May	69,500	67,500	9,900
June	71,800	70,300	9,900
July	73,500	71,400	9,900
August	67,100	65,100	9,900
September	68,100	66,100	9,900
October	60,000	60,000	9,900
November	52,000	52,000	9,900
December	59,300	57,600	9,900
January–December	753,000	731,000	115,000
2020:			
January	57,700	56,000	9,900
February	60,600	58,800	9,900
March	61,900	60,100	9,900
April	39,400	38,200	9,900
January–April	220,000	213,000	39,600

^eEstimated.

¹Data are rounded to no more than three significant digits; may not add to totals shown.

²Includes the zinc content in both lead and zinc concentrates.

TABLE 3
U.S. IMPORTS FOR CONSUMPTION OF ZINC¹

(Gross weight, unless otherwise specified)

Material	2019		2020			
	Quantity (metric tons)	Value (thousands)	April		January–April ²	
			Quantity (metric tons)	Value (thousands)	Quantity (metric tons)	Value (thousands)
Ore and concentrate (zinc content)	10	\$7	--	--	--	--
Unwrought:						
Refined zinc	830,000	2,190,000	64,700	\$135,000	258,000	\$585,000
Zinc alloys	1,530	4,480	11	79	246	617
Wrought:						
Bars, rods, profiles, wire	3,020 [†]	10,600	266	748	1,090	3,430
Plates, sheets, strip, foil	3,010 [†]	12,700	217	923	712	3,010
Ash and residues:						
Hard zinc spelter	20	17	--	--	--	--
Zinc dross and skimmings	3,730 [†]	5,950 [†]	140	150	1,520	2,120
Other (zinc content)	1,320	784	113	66	242	165
Other:						
Powders, flakes, dust	25,500	94,900	2,790	9,030	8,560	29,100
Waste and scrap	10,400	18,200	356	545	2,550	4,490
Chemicals:						
Lithopone	1,170	4,240	98	404	412	1,700
Zinc oxide	99,300	272,000	8,520	22,600	39,100	101,000
Zinc chloride	196	1,450	42	179	137	672
Zinc sulfate	72,100 [†]	64,700 [†]	9,110	7,300	30,700	23,700
Zinc sulfide	956	3,590	92	429	417	2,190

[†]Revised. -- Zero.

¹Data are rounded to no more than three significant digits.

²May include revisions to previously published data.

Source: U.S. Census Bureau.

TABLE 4
U.S. IMPORTS OF ZINC, BY TYPE OF MATERIAL AND COUNTRY OR LOCALITY¹

(Metric tons, gross weight, unless otherwise specified)

Material and country or locality	General imports			Imports for consumption		
	2019	2020		2019	2020	
		April	January–April ²		April	January–April ²
Ore and concentrate (zinc content), Canada	10	--	--	10	--	--
Refined zinc:						
Belgium	--	--	--	393	--	1
Brazil	11,300	--	5,040	11,300	--	5,040
Canada	517,000	40,300	172,000	517,000	40,300	172,000
China	49	1	7	5,770	1	7
Korea, Republic of	8,110	5,000	6,490	8,340	5,000	6,490
Mexico	142,000	16,600	53,300	142,000	16,600	53,300
Netherlands	--	--	--	3,420	--	--
Peru	59,300	2,690	21,100	59,300	2,690	21,100
Poland	268	--	--	268	--	--
Spain	14,500	--	--	81,900	--	98
Taiwan	62	3	3	62	3	3
Other	6	--	--	6	--	--
Total	753,000	64,700	258,000	830,000	64,700	258,000
Oxide:						
Australia	394	97	282	394	97	282
Belgium	30	--	--	30	--	--
Brazil	5	--	--	5	--	--
Canada	44,100	4,340	18,500	44,100	4,340	18,500
China	187	7	12	187	7	12
El Salvador	20	--	--	20	--	--
France	18	--	5	18	--	5
Germany	1,300	183	460	1,300	183	460
Greece	300	120	379	300	120	379
India	74	--	24	74	--	24
Indonesia	103	--	--	103	--	--
Israel	--	--	10	--	--	10
Italy	42	16	19	42	16	19
Japan	927	123	331	927	123	331
Korea, Republic of	96	11	56	96	11	56
Mexico	39,000	2,650	15,500	39,000	2,650	15,500
Netherlands	9,270	804	2,370	9,270	804	2,370
Peru	2,990	129	1,120	2,990	129	1,120
Russia	20	--	--	20	--	--
United Kingdom	425	12	28	425	12	28
Other	6	21	29	6	21	29
Total	99,300	8,520	39,100	99,300	8,520	39,100

-- Zero.

¹Data are rounded to no more than three significant digits; may not add to totals shown.

²May include revisions to previously published data.

Source: U.S. Census Bureau.

TABLE 5
U.S. EXPORTS OF ZINC¹

(Gross weight, unless otherwise specified)

Material	2019		2020			
	Quantity (metric tons)	Value (thousands)	April		January–April ²	
			Quantity (metric tons)	Value (thousands)	Quantity (metric tons)	Value (thousands)
Ore and concentrate (zinc content)	796,000 ^r	\$1,320,000 ^r	11,000	\$11,300	33,200	\$42,600
Unwrought:						
Refined zinc	5,170	14,300	178	506	1,210	3,370
Zinc alloys	21,600	63,500	735	1,970	6,540	17,600
Wrought:						
Bars, rods, profiles, wire	10,200	30,300	417	1,190	2,780	8,880
Plates, sheets, strip, foil	6,190	24,500	591	2,180	2,030	7,750
Ash and residues:						
Hard zinc spelter	9,370	16,700	750	885	3,060	4,070
Other (zinc content)	24,900 ^r	38,600	1,660	2,250	7,260	9,390
Other:						
Powders, flakes, dust	13,400	48,500	1,330	4,190	4,200	14,000
Waste and scrap	30,800	40,200 ^r	1,560	1,760	9,200	11,000
Chemicals:						
Lithopone	170	905	7	40	87	469
Zinc oxide	15,100 ^r	30,900	729	1,950	3,510	8,440
Zinc chloride	185	316	17	33	164	381
Zinc sulfate	486	648	163	112	264	225
Zinc sulfide	2,070	17,300	156	1,070	673	4,440

^rRevised.

¹Data are rounded to no more than three significant digits.

²May include revisions to previously published data.

Source: U.S. Census Bureau.

TABLE 6
U.S. EXPORTS OF ZINC, BY TYPE OF MATERIAL AND COUNTRY OR LOCALITY¹

(Metric tons, gross weight, unless otherwise specified)

Material and country or locality	2019	2020	
		April	January-April ²
Ore and concentrate (zinc content):			
Australia	64,100	--	--
Belgium	107,000	--	--
Brazil	7,030	--	--
Canada	268,000	7,880	18,300
Finland	29,400	--	--
Germany	29,700 ^r	--	--
Italy	33,800	--	--
Japan	38,500 ^r	3,120	6,500
Korea, Republic of	69,200 ^r	--	8,340
Mexico	10,700 ^r	--	--
Peru	5,000	--	120
Spain	116,000	--	--
Switzerland	17,500	--	--
Other	83	--	6
Total	796,000 ^r	11,000	33,200
Refined zinc:			
Australia	46	--	7
Canada	928	49	273
China	502	--	--
Colombia	98	--	--
Guatemala	17	--	10
India	132	--	201
Indonesia	375	--	--
Malaysia	625	--	--
Mexico	1,800	69	555
Panama	39	--	--
South Africa	438	--	--
Vietnam	40	60	164
Other	135	⁽³⁾	1
Total	5,170	178	1,210
Oxide:			
Australia	127	74	234
Belgium	90	--	38
Brazil	453 ^r	16	140
Canada	4,860	236	1,200
China	457	33	94
France	14	--	155
Germany	131	11	95
Guyana	124	2	20
India	825	20	79
Mexico	7,140	134	931
Poland	177	16	32
Thailand	123	3	4
United Kingdom	127	105	206
Other	506	78	280
Total	15,100 ^r	729	3,510

¹Revised. -- Zero.

²Data are rounded to no more than three significant digits; may not add to totals shown.

³May include revisions to previously published data.

³Less than ½ unit.

Source: U.S. Census Bureau.

TABLE 7
AVERAGE PRICES FOR SPECIAL HIGH GRADE ZINC

Period	North American		London Metal Exchange	
	Premium	Price ¹	cash ²	
	¢/lb.	¢/lb.	¢/lb.	\$/t
2019:				
April	8.6	141.88	133.26	2,937.96
May	8.8	133.37	124.59	2,746.79
June	8.1	126.07	118.01	2,601.56
July	7.9	118.64	110.72	2,440.96
August	8.3	111.45	103.17	2,274.60
September	8.7	113.93	105.20	2,319.16
October	8.8	119.71	110.90	2,444.99
November	8.8	119.11	110.33	2,432.43
December	8.6	111.70	103.12	2,273.40
January–December	8.5	124.13	115.60	2,548.63
2020:				
January	8.5	115.42	106.89	2,356.60
February	8.5	104.69	96.16	2,119.90
March	8.4	94.79	86.42	1,905.33
April	8.5	94.39	85.91	1,894.08
January–April	8.5	102.32	93.85	2,068.98

¹Platts Metals Week North American price. Based on the London Metal Exchange cash price plus the North American premium.

²Average of the cash buyer price and the cash seller and settlement price.

Source: Platts Metals Week.

TABLE 8
LONDON METAL EXCHANGE (LME) STOCKS OF SPECIAL HIGH GRADE ZINC, END OF PERIOD

(Metric tons)

Period	United States		Asia	Europe	Other	Total LME
	New Orleans, LA	Total				
2019:						
April	46,475	46,475	--	38,575	--	85,050
May	44,900	44,900	325	54,900	250	100,375
June	43,825	43,825	600	50,500	200	95,125
July	41,925	41,925	4,475	32,325	625	79,350
August	33,875	33,875	4,150	28,375	575	66,975
September	27,175	27,175	18,275	20,725	575	66,750
October	18,850	18,850	17,975	17,100	575	54,500
November	12,475	12,475	25,175	20,975	575	59,200
December	6,125	6,125	24,350	20,350	375	51,200
2020:						
January	4,150	4,150	25,950	19,300	375	49,775
February	4,100	4,100	30,750	40,000	350	75,200
March	4,000	4,000	36,650	32,950	200	73,800
April	4,200	4,200	47,325	49,225	100	100,850

-- Zero.

Source: London Metal Exchange, Ltd.