

Mineral Industry Surveys

For information, contact:

Daniel M. Flanagan, Copper Commodity Specialist
 National Minerals Information Center
 U.S. Geological Survey
 989 National Center
 Reston, VA 20192
 Telephone: (703) 648-7726, Fax: (703) 648-7757
 Email: dflanagan@usgs.gov

Sheema Merchant (Data)
 Telephone: (703) 659-9944
 Fax: (703) 648-7975
 Email: smerchant@usgs.gov

Internet: <https://www.usgs.gov/centers/nmic>

COPPER IN JANUARY 2020

In January 2020, domestic mine production of recoverable copper was 100,000 metric tons (t) (table 2). The average daily mine production was 3,240 t, essentially unchanged from that in December 2019 and an increase of 3% compared with that in January 2019 (fig. 1).

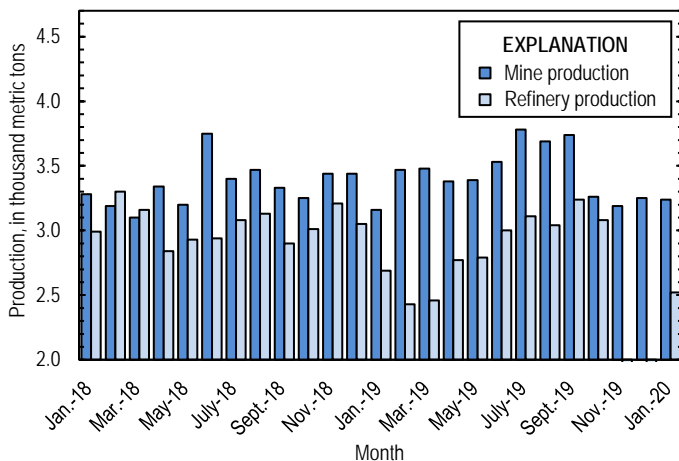


Figure 1. Average daily U.S. copper mine (recoverable) and refinery production from January 2018 through January 2020. Refinery production in November and December 2019 were withheld to avoid disclosing company proprietary data.

Owing to temporary closures of ASARCO LLC’s (Tucson, AZ) smelter and electrolytic refinery as a result of a worker strike, smelter and electrolytic refinery production reported to the U.S. Geological Survey in January 2020 were withheld to avoid disclosing company proprietary data. Smelter and electrolytic refinery output in tables 3 and 4 are estimates based on information in quarterly public company reports. Estimated smelter production in January 2020 was 30,000 t (table 3). The estimated average daily output was 968 t, 14% less than that in January 2019. Total refinery production in January 2020 was 78,200 t, with an average daily output of 2,520 t, a decrease of 6% relative to that in January 2019 (fig. 1, table 4).

Prices

The average January 2020 COMEX spot copper price was \$2.75 per pound, a slight increase from \$2.72 per pound in December 2019 and 3% higher than \$2.68 per pound in January 2019 (fig. 2, table 11). The average U.S. dealers’ price of number 2 scrap in January 2020 was \$2.00 per pound (fig. 2, table 12).

Stocks

Refined copper stocks in the United States totaled 93,300 t at the end of January 2020, a decline of 16% from those in December 2019 and 60% lower than those in January 2019. London Metal Exchange Ltd. stocks in U.S. warehouses fell by 45%, COMEX stocks decreased by 19%, and stocks at wire-rod mills rose by 24% compared with those at the end of December 2019 (fig. 3, table 10).

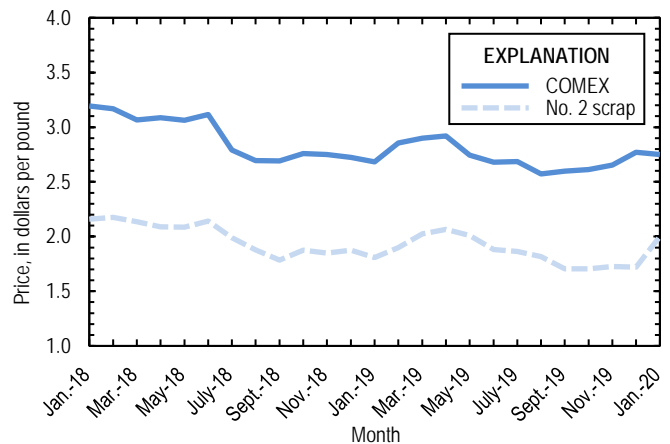


Figure 2. Monthly average COMEX copper price and no. 2 copper scrap dealers buying price from January 2018 through January 2020. As of January 2020, no. 2 prices were available only for the entire United States, whereas no. 2 prices were available only for individual domestic markets prior to January 2020. Prices shown prior to January 2020 are for New York dealers no. 2 scrap. Sources: American Metal Market, Platts Metals Week.

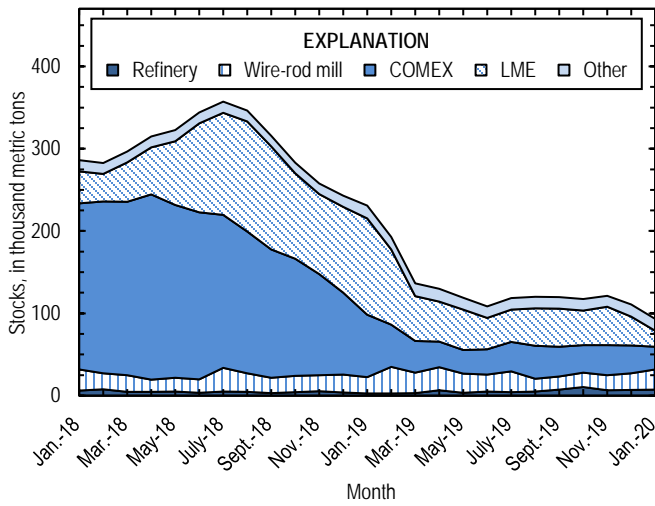


Figure 3. Monthly domestic refined copper stocks, by type, from January 2018 through January 2020. Sources: American Metal Market, London Metal Exchange Ltd., and U.S. Geological Survey.

Industry News

Chile.—The Corporación Nacional del Cobre de Chile (CODELCO), the leading global copper-producing company, began production from an expansion of the El Teniente Mine on January 23. The expansion will avert a decrease in CODELCO’s copper output and increase the life of the mine into the 2070s. El Teniente is currently the tenth-ranked global copper mine by capacity (International Copper Study Group, 2020, p. 36; Rostás, 2020).

References Cited

International Copper Study Group, 2020, Directory of copper mines and plants up to 2024: Lisbon, Portugal, International Copper Study Group, September 4, 233 p.
 Rostás, Renato, 2020, Codelco starts Cu output at El Teniente expansion: S&P Global Market Intelligence, January 23. (Accessed January 31, 2020, via <https://www.snl.com/>)

List services and web feed subscribers are the first to receive notification of USGS minerals information publications and data releases. For information on how to subscribe, go to <https://www.usgs.gov/centers/nmic>.

TABLE 1
SALIENT STATISTICS OF THE COPPER INDUSTRY IN THE UNITED STATES¹

(Metric tons of copper content, unless otherwise specified)

	Source table ²	2019				2020 January
		2018 ^p	November	December	January– December	
Production:						
Primary:						
Mine, recoverable	(2)	1,220,000	95,800	101,000	1,260,000	100,000
Smelter	(3)	536,000	W	W	464,000 ^r	30,000 ^e
Refinery:						
Electrolytic, domestic and foreign	(4)	538,000	W	W	457,000	30,000 ^e
Electrowon	(4)	532,000	41,100	43,200	528,000	45,000
Total	(4)	1,070,000	W	W	985,000	75,000
Secondary recoverable copper:³						
Refineries	(5)	41,200	3,240	3,240 ^r	44,400 ^r	3,260
Ingot makers ⁴	(5)	56,800	4,820 ^r	4,820 ^r	57,900 ^r	4,820
Brass and wire-rod mills	(5)	652,000	54,200	54,100	653,000	53,700
Foundries, etc. ⁴	(5)	36,300	3,060 ^r	3,060 ^r	36,700 ^r	3,060
Consumption:						
Apparent	(8)	1,800,000	W	W	1,810,000 ^r	162,000
Refined (reported)	(7)	1,810,000	151,000	142,000	1,830,000	160,000
Purchased copper-base scrap (gross weight)	(9)	918,000	76,400 ^r	76,200 ^r	924,000 ^r	75,900
Stocks at end of period:						
Total refined	(10)	243,000	121,000 ^r	111,000 ^r	111,000 ^r	93,300
Blister and anodes	(10)	9,230	10,200	16,400 ^r	16,400 ^r	9,590
Price, U.S. producers cathode (cents per pound) ⁵	(11)	298.737	272.588	284.342	279.596	282.467
Imports:⁶						
Ore and concentrates	(13)	32,200	--	-- ^r	27,000	--
Refined	(13)	778,000	49,000 ^r	59,500	663,000	62,300
Exports:⁶						
Ore and concentrates	(14)	253,000	41,500	31,000	363,000	26,600
Refined	(14)	190,000	9,510	7,830	125,000	4,170

^eEstimated. ^pPreliminary. ^rRevised. W Withheld to avoid disclosing company proprietary data. -- Zero.

¹Data are rounded to no more than three significant digits, except prices; may not add to totals shown.

²Numbers in parentheses refer to the tables where these data are located.

³Copper recovered from copper-base scrap only.

⁴Estimated based on the monthly average of 2018 annual data.

⁵Source: Platts Metals Week.

⁶Source: U.S. Census Bureau.

TABLE 2
MINE PRODUCTION OF RECOVERABLE COPPER IN THE UNITED STATES¹

(Metric tons)

Period	Recoverable copper			Contained copper		
	Arizona	Others ²	Total	Electrowon	Concentrates ³	Total
2019: ^p						
January	67,900	29,900	97,800	42,400	57,600	99,900
February	63,600	33,500	97,100	39,800	59,500	99,200
March	72,400	35,500	108,000	44,600	65,700	110,000
April	69,700	31,600	101,000	41,300	62,300	104,000
May	71,500	33,700	105,000	44,700	62,800	108,000
June	73,400	32,400	106,000	45,900	62,100	108,000
July	79,200	38,000	117,000	47,600	72,300	120,000
August	77,400	37,200	115,000	46,500	70,500	117,000
September	74,000	38,100	112,000	44,700	69,900	115,000
October	72,300	28,600	101,000	45,800	57,100	103,000
November	66,000	29,800	95,800	41,100	56,800	97,900
December	70,100	30,500	101,000	43,200	59,600 ^r	103,000
January–December	858,000	399,000	1,260,000	528,000	756,000	1,280,000
2020, January	71,500	28,900	100,000	45,000	58,400	103,000

^pPreliminary. ^rRevised.

¹Data are rounded to no more than three significant digits; may not add to totals shown.

²Includes production from Michigan, Missouri, Montana, Nevada, New Mexico, and Utah.

³Includes copper content of precipitates and other metal concentrates.

TABLE 3
COPPER PRODUCED AT SMELTERS IN
THE UNITED STATES^{1,2}

(Metric tons, copper content)

Period	Anode production
2019: ^p	
January	34,700
February	17,700
March	37,000
April	32,900
May	54,100
June	51,800
July	34,500
August	49,200
September	43,200
October	43,800
November	W
December	W
January–December	464,000 ^r
2020, January	30,000 ^{e,3}

^eEstimated; ^pPreliminary. ^rRevised. W Withheld to avoid disclosing company proprietary data.

¹Includes blister and copper anode from primary or secondary sources.

²Data are rounded to no more than three significant digits; may not add to totals shown.

³To avoid disclosing company proprietary data, smelter production in January 2020 is an estimate based on information from public company reports and does not reflect actual production reported to the U.S. Geological Survey.

TABLE 4
PRODUCTION OF REFINED COPPER, BY SOURCE AND METHOD OF RECOVERY¹

(Metric tons)

Period	Primary materials			Scrap	Total refined
	Electrolytically refined ²	Electrowon	Total		
2019: ^p					
January	37,100	42,400	79,500	3,770	83,200
February	25,000	39,800	64,800	3,330	68,100
March	27,800	44,600	72,500	3,950	76,400
April	38,100	41,300	79,400	3,600	83,000
May	38,300	44,700	83,000	3,470	86,500
June	40,600	45,900	86,500	3,480	90,000
July	45,100	47,600	92,700 ^r	3,860	96,500
August	41,800	46,500	88,300	5,860	94,200 ^r
September	49,000	44,700	93,700	3,360	97,000
October	46,500	45,800	92,300	3,220	95,500
November	W	41,100	W	3,240	W
December	W	43,200	W	3,240 ^r	W
January–December	457,000	528,000	985,000	44,400 ^r	1,030,000
2020, January	30,000 ^{e, 3}	45,000	75,000	3,260	78,200

^eEstimated. ^pPreliminary. ^rRevised. W Withheld to avoid disclosing company proprietary data.

¹Data are rounded to no more than three significant digits; may not add to totals shown.

²From domestic and foreign source materials.

³To avoid disclosing company proprietary data, electrolytically refined production in January 2020 is an estimate based on information from public company reports and does not reflect actual production reported to the U.S. Geological Survey.

TABLE 5
COPPER RECOVERABLE IN UNALLOYED AND ALLOYED FORM FROM PURCHASED COPPER-BASE SCRAP¹

(Metric tons, copper content)

Period	Refineries ²		Ingot makers ³		Brass and wire-rod mills		Foundries, etc. ³		Total ⁴
	New scrap ^c	Old scrap	New scrap	Old scrap	New scrap	Old scrap	New scrap	Old scrap	
2019: ^p									
January	1,680	2,100	768 ^r	4,060 ^r	52,100	3,520	2,150 ^r	913 ^r	67,300 ^r
February	1,680	1,660	768 ^r	4,060 ^r	51,900	3,170	2,150 ^r	913 ^r	66,300 ^r
March	1,680	2,270	768 ^r	4,060 ^r	52,200	3,310	2,150 ^r	913 ^r	67,400 ^r
April	1,680	1,930	768 ^r	4,060 ^r	51,400	3,340	2,150 ^r	913 ^r	66,200 ^r
May	1,680	1,790	768 ^r	4,060 ^r	51,600	3,330	2,150 ^r	913 ^r	66,300 ^r
June	1,680	1,800	768 ^r	4,060 ^r	51,400	3,550	2,150 ^r	913 ^r	66,300 ^r
July	1,680	2,190	768 ^r	4,060 ^r	49,100	3,590	2,150 ^r	913 ^r	64,400 ^r
August	1,680	4,180	768 ^r	4,060 ^r	52,800	3,030	2,150 ^r	913 ^r	69,600 ^r
September	1,680	1,680	768 ^r	4,060 ^r	49,700	2,330	2,150 ^r	913 ^r	63,300 ^r
October	1,680	1,540	768 ^r	4,060 ^r	51,000	2,490	2,150 ^r	913 ^r	64,600 ^r
November	1,680	1,560	768 ^r	4,060 ^r	51,700	2,560	2,150 ^r	913 ^r	65,400 ^r
December	1,680	1,560 ^r	768 ^r	4,060 ^r	51,800	2,290	2,150 ^r	913 ^r	65,200 ^r
January–December	20,100	24,200 ^r	9,220 ^r	48,700 ^r	617,000	36,500	25,800 ^r	11,000 ^r	792,000 ^r
2020, January	1,680	1,590	768	4,060	51,700	2,000	2,150	913	64,800

^cEstimated ^pPreliminary. ^rRevised.

¹Data are rounded to no more than three significant digits; may not add to totals shown.

²Electrolytically refined and fire refined from scrap based on source of material at smelter or refinery level.

³Monthly data estimated based on the monthly average of 2018 annual data.

⁴Does not include an estimate, based on reported 2018 annual data, of 3,380 tons per month from new scrap and 2,710 tons per month from old scrap of copper recovered from scrap other than copper-base.

TABLE 6
 PRODUCTION, SHIPMENTS, AND STOCKS OF BRASS AND WIRE-ROD SEMIFABRICATES¹

(Metric tons, gross weight)

Period	Production		Shipments		Stocks, end of period	
	Brass mills	Wire-rod mills	Brass mills	Wire-rod mills	Brass mills	Wire-rod mills
2019: ^p						
January	74,200	113,000	73,800	116,000	30,000	23,700
February	73,500	103,000	73,600	110,000	29,900	17,100
March	74,200	117,000	73,800	112,000	30,400	22,400
April	73,700	104,000	73,900	111,000	30,200	23,800
May	73,800	116,000	74,100	112,000	29,800	28,400
June	73,600	109,000	73,500	116,000	30,000	22,100
July	70,300	110,000	70,900	113,000	29,400	25,200
August	73,800	112,000	73,700	116,000	29,500	22,700
September	73,200	113,000	73,300	110,000	29,400	26,400
October	73,900	112,000	74,000	114,000	29,200	23,800
November	73,200	101,000	73,000	100,000	29,400	24,600
December	72,700	93,500	72,200	94,100	29,900	24,000
January–December	880,000	1,300,000	880,000	1,320,000	29,900	24,000
2020, January	73,100	110,000	74,200	106,000	28,800	27,800

^pPreliminary.

¹Data are rounded to no more than three significant digits; may not add to totals shown.

TABLE 7
CONSUMPTION OF REFINED COPPER¹

(Metric tons)

Period	Brass mills	Wire-rod mills	Other plants ²	Total
2019: ^p				
January	34,900	116,000	5,450 ^r	157,000 ^r
February	34,800	106,000	5,450 ^r	147,000 ^r
March	34,900	123,000	5,450 ^r	164,000 ^r
April	34,900	119,000	5,450 ^r	160,000 ^r
May	35,400	114,000	5,450 ^r	155,000 ^r
June	34,200	110,000	5,450 ^r	150,000
July	34,100	107,000	5,450 ^r	147,000
August	34,000	116,000	5,450 ^r	155,000
September	34,100	110,000	5,450 ^r	150,000 ^r
October	34,200	118,000	5,450 ^r	158,000 ^r
November	34,100	112,000	5,450 ^r	151,000
December	33,100	104,000	5,450 ^r	142,000
January–December	413,000	1,360,000	65,400 ^r	1,830,000
2020, January	34,500	120,000	5,450	160,000

^pPreliminary. ^rRevised.

¹Data are rounded to no more than three significant digits; may not add to totals shown.

²Monthly consumption data by ingot makers, chemical plants, foundries, and miscellaneous manufacturers are estimated based on the monthly average of 2018 annual data.

TABLE 8
U.S. APPARENT CONSUMPTION OF COPPER¹

(Metric tons)

Period	Primary refined copper production	Copper in old scrap ²	Refined imports for consumption ³	Refined exports ³	Stock change during period	Apparent consumption
2019: ^p						
January	79,500	13,300 ^r	57,000 ^r	12,600	-12,100 ^r	149,000 ^r
February	64,800	12,500 ^r	37,500 ^r	13,100	-37,900	140,000 ^r
March	72,500	13,300 ^r	40,500 ^r	10,200	-56,500	172,000
April	79,400	12,900 ^r	65,400 ^r	13,500	-6,390	151,000 ^r
May	83,000	12,800 ^r	52,400 ^r	11,000	-11,200	148,000
June	86,500	13,000 ^r	55,200 ^r	13,800	-10,100	151,000 ^r
July	92,700 ^r	13,500 ^r	68,200	9,810	10,000	155,000 ^r
August	88,300	14,900 ^r	50,500 ^r	6,960	1,580	145,000
September	93,700	11,700 ^r	60,700 ^r	8,410	-484	158,000
October	92,300	11,700 ^r	66,800 ^r	8,540	-2,550	165,000 ^r
November	W	11,800 ^r	49,000 ^r	9,510	4,330	W
December	W	11,500 ^r	59,500 ^r	7,830 ^r	-10,900 ^r	W
January–December	985,000	153,000 ^r	663,000 ^r	125,000	-132,000 ^r	1,810,000 ^r
2020, January	75,000	11,300	62,300	4,170	-17,300	162,000

^pPreliminary. ^rRevised. W Withheld to avoid disclosing company proprietary data.

¹Data are rounded to no more than three significant digits; may not add to totals shown.

²Includes reported monthly production of copper from old scrap of copper-base, an estimate for annual reporters, and a monthly average of copper from non-copper-base materials based on 2018 annual data.

³Source: U.S. Census Bureau.

TABLE 9
CONSUMPTION OF PURCHASED COPPER-BASE SCRAP¹

(Metric tons, gross weight)

Period	Smelters and refineries		Ingot makers ²		Brass and wire-rod mills ³		Foundries, etc. ²		Total scrap used
	New scrap ^c	Old scrap	New scrap	Old scrap	New scrap	Old scrap	New scrap	Old scrap	
2019: ^p									
January	1,730	2,160	2,010 ^r	4,990 ^r	60,100	3,610	2,600 ^r	900 ^r	78,100 ^r
February	1,730	1,710	2,010 ^r	4,990 ^r	59,900	3,260	2,600 ^r	900 ^r	77,100 ^r
March	1,730	2,340	2,010 ^r	4,990 ^r	60,200	3,410	2,600 ^r	900 ^r	78,200 ^r
April	1,730	1,990	2,010 ^r	4,990 ^r	59,400	3,450	2,600 ^r	900 ^r	77,100 ^r
May	1,730	1,850	2,010 ^r	4,990 ^r	59,700	3,540	2,600 ^r	900 ^r	77,400 ^r
June	1,730	1,850	2,010 ^r	4,990 ^r	59,400	3,910	2,600 ^r	900 ^r	77,400 ^r
July	1,730	2,260	2,010 ^r	4,990 ^r	57,100	3,880	2,600 ^r	900 ^r	75,500 ^r
August	1,730	4,310	2,010 ^r	4,990 ^r	61,000	3,240	2,600 ^r	900 ^r	80,800 ^r
September	1,730	1,730	2,010 ^r	4,990 ^r	57,800	2,510	2,600 ^r	900 ^r	74,300 ^r
October	1,730	1,730	2,010 ^r	4,990 ^r	59,200	2,720	2,600 ^r	900 ^r	75,900 ^r
November	1,730	1,610	2,010 ^r	4,990 ^r	59,800	2,760	2,600 ^r	900 ^r	76,400 ^r
December	1,730	1,610 ^r	2,010 ^r	4,990 ^r	59,900	2,460	2,600 ^r	900 ^r	76,200 ^r
January–December	20,700	25,100 ^r	24,100 ^r	59,800 ^r	714,000	38,800	31,200 ^r	10,800 ^r	924,000 ^r
2020, January	1,730	1,660	2,010	4,990	59,800	2,180	2,600	900	75,900

^cEstimated. ^pPreliminary. ^rRevised.

¹Data are rounded to no more than three significant digits; may not add to totals shown.

²Monthly data estimated based on the monthly average of 2018 annual data.

³Consumption at brass and wire-rod mills assumed equal to receipts.

TABLE 10
COPPER STOCKS AT END OF PERIOD¹

(Metric tons)

Period	Crude copper ²	Refined copper					LME ⁵	Total refined
		Refineries ³	Wire-rod mills ³	Brass mills ³	Other ⁴	Comex		
2019: ^p								
January	9,550	2,700	19,700	8,370	7,070 ^r	76,100	117,000	231,000 ^r
February	10,200	2,750	32,300	8,270	7,070 ^r	51,200	91,300	193,000 ^r
March	15,000	2,970	24,800	8,400	7,070 ^r	38,700	54,400	136,000 ^r
April	8,860	6,630	28,100	8,370	7,070 ^r	31,100	48,600	130,000 ^r
May	9,210	3,550	23,200	7,250	7,070 ^r	28,700	49,000	119,000 ^r
June	13,600	5,000	20,700	7,120	7,070 ^r	30,700	38,000	109,000 ^r
July	15,500	4,350	25,000	7,070	7,070 ^r	36,000	39,200	119,000 ^r
August	14,500	5,050	15,400	6,930	7,070 ^r	40,000	45,700	120,000 ^r
September	8,340	7,180	16,200	6,800	7,070 ^r	36,000	46,500	120,000 ^r
October	25,400	10,600	17,500	6,680	7,070 ^r	33,200	42,200	117,000 ^r
November	10,200	6,650	18,200	6,580	7,070 ^r	36,400	46,600	121,000 ^r
December	16,400 ^r	7,010	20,000 ^r	7,520	7,070 ^r	34,100	35,000	111,000 ^r
2020, January	9,590	7,210	24,800	7,330	7,070	27,600	19,300	93,300

^pPreliminary. ^rRevised.

¹Data are rounded to no more than three significant digits; may not add to totals shown.

²Copper content of blister and anodes.

³Stocks of refined copper as reported; no estimates are made for nonrespondents.

⁴Monthly estimates based on 2018 annual data, comprising stocks at ingot makers, chemical plants, foundries, and miscellaneous manufacturers.

⁵London Metal Exchange Ltd., U.S. warehouses.

TABLE 11
 AVERAGE PRICE OF COPPER IN THE UNITED STATES
 AND ON THE LONDON METAL EXCHANGE

(Cents per pound)

Period	U.S. producers cathode ¹	Comex first position ²	LME cash price Grade A
2019:			
January	275.588	268.238	269.052
February	293.129	285.566	284.754
March	297.974	289.974	292.581
April	299.820	292.007	292.317
May	282.232	274.282	273.412
June	274.968	267.843	266.166
July	275.657	268.657	269.397
August	264.293	257.243	258.890
September	266.490	259.740	260.588
October	268.065	261.165	260.470
November	272.588	265.463	265.774
December	284.342	277.029	274.970
Year	279.596	272.267	272.364
2020, January	282.467	274.967	274.362

¹Sum of "Comex high grade first position" and "NY dealer premium cathode."

²Listed as "Comex high grade first position."

Source: Platts Metals Week.

TABLE 12
AVERAGE BUYING PRICES FOR COPPER SCRAP

(Cents per pound)

Period	Brass mills No. 1 scrap	Refiners No. 2 scrap	Dealers (United States) ¹	
			No. 2 scrap	Red brass turnings and borings
2019:				
January	260.33	235.19	180.79	139.00
February	278.66	252.39	189.82	140.42
March	282.69	253.31	202.50	145.00
April	284.26	252.17	206.50	147.00
May	265.41	231.95	201.05	143.18
June	257.40	225.70	188.00	138.00
July	258.48	227.95	186.32	138.00
August	247.20	217.00	181.68	134.18
September	250.05	220.50	170.50	131.00
October	250.04	221.04	170.50	128.00
November	253.84	224.84	172.50	127.53
December	264.76	236.19	172.12	127.00
Year	262.76	233.19	185.19	136.53
2020, January	262.29	234.76	200.00	139.00

¹As of January 2020, domestic dealers prices were available only for the entire United States, whereas dealers prices were available only for individual domestic markets prior to January 2020. Dealers prices in 2019 are for New York, and dealers prices in 2020 are for the entire United States.

Source: American Metal Market.

TABLE 13
U.S. IMPORTS FOR CONSUMPTION OF COPPER (UNMANUFACTURED), BY CLASS¹

(Metric tons, copper content)

Country or locality	Ore and concentrates ²		Matte, ash, and precipitates ³		Blister and anodes		Refined	
	2020		2020		2020		2020	
	2019	January	2019	January	2019	January	2019	January
Belgium	--	--	228	--	--	--	2,300	--
Bolivia	--	--	13	--	--	--	1,510	--
Canada	(4)	--	451	--	(4)	(4)	138,000	12,700
Chile	--	--	--	--	--	--	422,000	41,400
Finland	--	--	--	--	191	--	38	--
Germany	--	--	(4)	--	--	--	2,010	334
Japan	--	--	295	--	(4)	--	2,540	242
Mexico	27,000	--	138	(4)	(4)	--	82,300	5,600
Netherlands	--	--	120	--	4	--	(4)	--
Peru	(4)	--	--	--	--	--	10,000	2,000
Saudi Arabia	--	--	98	--	--	--	--	--
Spain	--	--	540	--	1	--	(4)	--
Tunisia	--	--	--	--	35	--	--	--
Zambia	--	--	--	--	--	--	689	--
Other	27	--	76	--	5	1	1,160	91
Total	27,000	--	1,960	(4)	236	1	663,000	62,300

-- Zero.

¹Data are rounded to no more than three significant digits; may not add to totals shown.

²Copper ore and concentrates only; excludes copper contained in ore and concentrates of other metals.

³Copper matte, ash, and precipitates only; excludes the copper content of mattes and ashes of other metals.

⁴Less than ½ unit.

Source: U.S. Census Bureau.

TABLE 14
U.S. EXPORTS OF COPPER (UNMANUFACTURED), BY CLASS¹

(Metric tons, copper content)

Country or locality	Ore and concentrates ²		Matte, ash, and precipitates ³		Blister and anodes		Refined	
	2020		2020		2020		2020	
	2019	January	2019	January	2019	January	2019	January
Austria	--	--	--	--	127	--	--	--
Belgium	161	27	3,290	578	359	23	129	--
Brazil	5,370	--	--	--	39	--	1	--
Bulgaria	15,900	--	--	--	--	--	--	--
Canada	14,400	2,260	14,700	832	2,600	398	32,100	2,940
China	7	--	97	(4)	200	20	13	23
Germany	--	--	597	13	286	--	1	--
Hong Kong	--	--	19	--	279	--	20	--
India	--	--	--	--	259	26	36	--
Italy	--	--	--	--	208	--	26	84
Japan	27,400	--	48	--	26	--	11	1
Korea, Republic of	15,500	1,960	74	--	1,520	136	682	2
Malaysia	35	--	--	--	188	--	1	--
Mexico	248,000	20,300	1,210	--	32	4	92,100	1,100
Philippines	11,900	--	--	--	56	--	2	--
Slovakia	--	--	1,070	216	--	--	--	--
Spain	22,700	2,040	259	60	61	--	--	--
Sweden	--	--	--	--	463	--	(4)	--
Other	1,940	18	763	(4)	564	11	181	15
Total	363,000	26,600	22,200	1,700	7,270	618	125,000	4,170

-- Zero.

¹Data are rounded to no more than three significant digits; may not add to totals shown.

²Copper ore and concentrates only; excludes copper contained in ore and concentrates of other metals.

³Copper matte, ash, and precipitates only; excludes the copper content of mattes and ashes of other metals.

⁴Less than ½ unit.

Source: U.S. Census Bureau.

TABLE 15
U.S. IMPORTS FOR CONSUMPTION OF COPPER SCRAP¹

(Metric tons, gross weight)

Country or locality	Unalloyed		Alloyed	
	2019	2020 January	2019	2020 January
Bahamas	--	--	736	104
Canada	16,700	1,490	49,900	3,530
Chile	--	--	1,300	--
Colombia	251	--	1,050	75
Costa Rica	473	11	1,160	105
Dominican Republic	610	33	2,120	87
El Salvador	--	--	695	38
Germany	188	27	111	23
Guatemala	17	--	603	20
Honduras	63	13	679	67
Japan	1,040	--	--	--
Mexico	11,500	746	42,100	3,410
Pakistan	151	--	--	--
Panama	736	95	483	46
Suriname	124	--	100	5
Venezuela	28	--	554	--
Vietnam	114	9	17	4
Other	519	42	3,850	138
Total	32,600	2,470	105,000	7,650

-- Zero.

¹Data are rounded to no more than three significant digits; may not add to totals shown.

Source: U.S. Census Bureau.

TABLE 16
U.S. EXPORTS OF COPPER SCRAP¹

(Metric tons, gross weight)

Country or locality	Unalloyed				Alloyed		
	2019	2020			2019	2020	
		No. 1 January	No. 2 January	Other January		Segregated January	Unsegregated January
Belgium	23,600	438	1,060	99	14,300	79	431
Canada	49,200	--	--	4,380	42,000	--	2,560
China	74,800	1,710	1,700	1,040	13,100	16	561
Germany	29,400	1,170	706	697	14,300	78	1,230
Greece	8,180	321	178	252	973	94	18
Hong Kong	19,900	375	--	244	30,500	302	842
India	14,400	288	429	521	45,500	2,380	1,180
Japan	22,600	313	645	269	20,300	84	885
Korea, Republic of	46,900	2,730	870	925	25,000	913	956
Malaysia	65,300	415	1,200	2,780	156,000	1,860	5,870
Netherlands	4,300	122	19	--	1,010	--	20
Pakistan	882	12	87	--	19,800	20	1,890
Poland	5,450	347	301	642	45	--	38
Spain	1,510	44	57	38	8,510	193	287
Taiwan	20,300	849	639	1,340	20,300	381	877
Thailand	4,120	206	218	574	16,300	664	1,280
Other	31,200	1,630	1,660	671	21,300	222	1,210
Total	422,000	11,000	9,770	14,500	450,000	7,280	20,100

-- Zero.

¹Data are rounded to no more than three significant digits; may not add to totals shown.

Source: U.S. Census Bureau.