

Mineral Industry Surveys

For information, contact:

Amy C. Tolcin, Zinc Commodity Specialist (Acting)
 National Minerals Information Center
 U.S. Geological Survey
 989 National Center
 Reston, VA 20192
 Telephone: (703) 648-4940 Fax: (703) 648-7757
 Email: atolcin@usgs.gov

Hodan A. Fatah (Data)
 Telephone: (703) 648-4971
 Fax: (703) 648-7975
 Email: hfatah@usgs.gov

Internet: <https://www.usgs.gov/centers/nmic>

ZINC IN NOVEMBER 2019

Domestic mine production (recoverable) of zinc in November 2019 was 50,300 metric tons (t) (tables 1, 2). Average daily mine production in November was 1,680 t, 10% lower than that in the previous month and 7% lower than that in November 2018 (fig. 1).

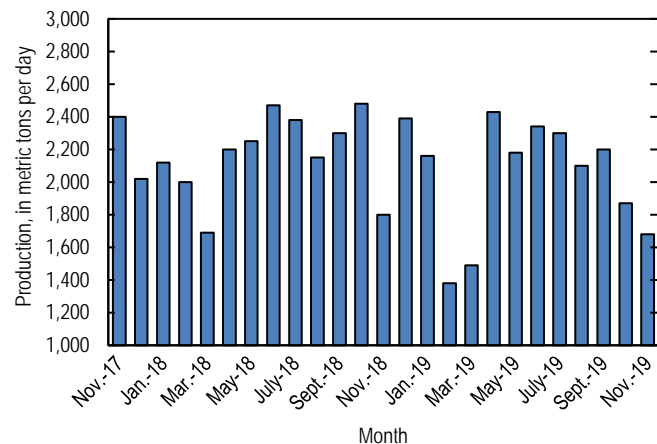


Figure 1. Average daily domestic zinc mine production (recoverable) from November 2017 through November 2019.

Stocks and Prices

Global London Metal Exchange Ltd. (LME) stocks of Special High Grade (SHG) zinc were 59,200 t at the end of November 2019, 9% higher than stocks at the end of October but 47% lower than stocks at the end of November 2018 (fig. 2, table 7). The LME announced plans to implement several warehouse reforms in order to increase stock levels on the exchange. The reforms included extending the number of days warehousing companies can charge rent on stored metal, introducing off-warrant stock reporting to increase transparency, and limiting warehousing companies from entering into “evergreen rent deals” with any other party but the original metal holder (London Metal Exchange Ltd., 2019).

The monthly average Platts Metals Week North American SHG zinc price in November 2019 was \$1.19 per pound, essentially unchanged from that in the previous month and 6% lower than that in November 2018. The November 2019 average LME cash price for SHG zinc was \$2,432.43 per metric ton (\$1.10 per pound), essentially unchanged from that in October and 6% lower than that in November 2018 (fig. 3, table 6).

The North American premium to the LME cash price in November 2019 averaged 8.8 cents per pound, unchanged from that in the previous month and slightly less than that in November 2018 (fig. 3, table 6).

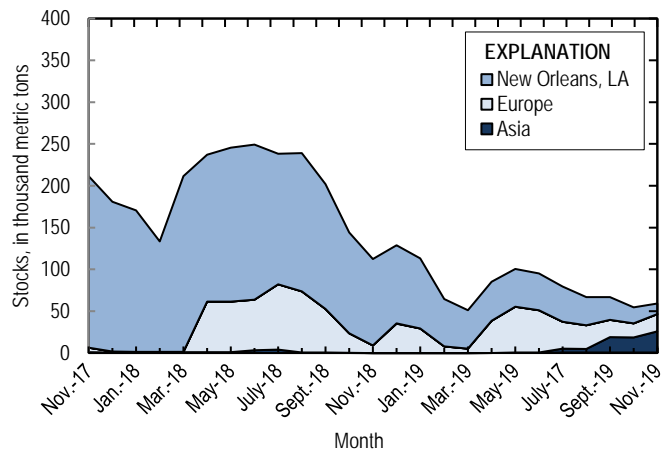


Figure 2. Global LME stocks of Special High Grade zinc, monthend, from November 2017 through November 2019. Source: London Metal Exchange Ltd.

Industry News

On November 14, AK Steel Corp. ceased operating the hot-dip galvanizing line as its Ashland Works steel mill in Ashland, KY. The blast furnace at the plant had been idle since 2015. The company planned to fully shut down the facility by yearend (Cowden, 2019).

References Cited

Cowden, Michael, AK halts KY coating line after nearly 100 years: American Metal Market, November 15. (Accessed January 28, 2020, via [https://www.amm.com/.](https://www.amm.com/))

London Metal Exchange Ltd., 2019, LME proceeds with warehouse reform proposals: London, United Kingdom, London Metal Exchange Ltd., November 1. (Accessed January 28, 2020, at <https://www.lme.com/News/Press-room/Press-releases/Press-releases/2019/10/LME-proceeds-with-warehouse-reform-proposals.>)

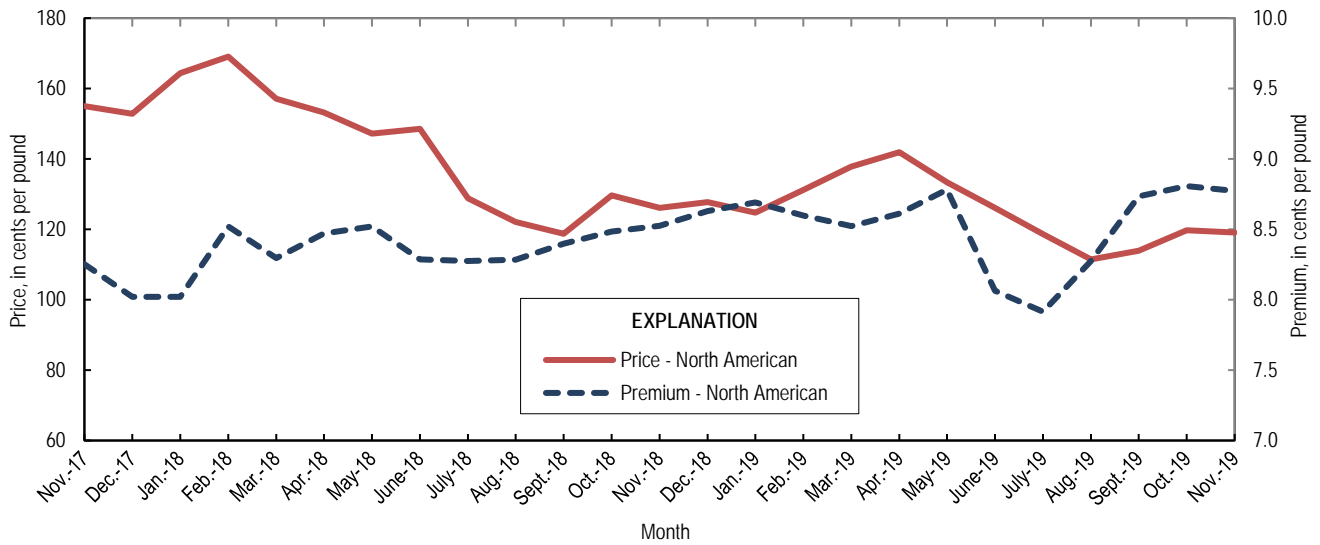


Figure 3. Average monthly North American price and premium for Special High Grade zinc from November 2017 through November 2019. Source: Platts Metals Week.

List services and web feed subscribers are the first to receive notification of USGS minerals information publications and data releases. For information on how to subscribe, go to <https://www.usgs.gov/centers/nmic/minerals-information-publication-list-services>.

TABLE 1
SALIENT ZINC STATISTICS¹

(Metric tons, unless otherwise specified)

	2018	2019		
	January– December ^p	October	November	January– November ²
Production:				
Mine, zinc content of concentrate ³	824,000	59,600	51,700	693,000
Mine, recoverable zinc ³	799,000	57,800	50,300	673,000
Smelter, refined zinc ^e	116,000	9,900	9,900	105,000
Consumption of refined zinc, apparent ⁴	868,000	77,800	70,700	851,000
Imports for consumption:				
Ore and concentrate (zinc content)	32	--	--	10
Refined zinc	775,000	68,200	61,100	751,000
Exports:				
Ore and concentrate (zinc content)	806,000	60,300	45,000	850,000
Refined zinc	23,300	346	333	4,900
Price:⁵				
London Metal Exchange cash, average, dollars per metric ton	2,924.55	2,444.99	2,432.43	2,573.65
Platts Metals Week North American, average, cents per pound	141.05	119.71	119.11	125.26

^cEstimated. ^pPreliminary. -- Zero.

¹Data are rounded to no more than three significant digits, except prices; may not add to totals shown.

²May include revisions to previously published data.

³Reported zinc content in both zinc and lead concentrates.

⁴Smelter production plus imports for consumption minus domestic exports.

⁵Special High Grade Zinc.

TABLE 2
MINE AND SMELTER PRODUCTION OF ZINC
IN THE UNITED STATES¹

(Metric tons)

Period	Mine ²		Smelter ^c
	Zinc content	Recoverable	
2018:			
November	55,700	53,900	11,900
December	76,700	74,200	11,900
January–December	824,000	799,000	116,000
2019:			
January	68,900	66,900	8,600
February	39,800	38,600	8,600
March	47,600	46,100	8,600
April	75,300	73,000	9,900
May	69,500	67,500	9,900
June	71,800	70,300	9,900
July	73,500	71,400	9,900
August	67,100	65,100	9,900
September	68,100	66,100	9,900
October	59,600	57,800	9,900
November	51,700	50,300	9,900
January–November	693,000	673,000	105,000

^cEstimated.

¹Data are rounded to no more than three significant digits; may not add to totals shown.

²Includes the zinc content in both lead and zinc concentrates.

TABLE 3
U.S. IMPORTS FOR CONSUMPTION OF ZINC¹

(Gross weight, unless otherwise specified)

Material	2018		2019			
	Quantity (metric tons)	Value (thousands)	November		January–November ²	
			Quantity (metric tons)	Value (thousands)	Quantity (metric tons)	Value (thousands)
Ore and concentrate (zinc content)	32	\$23	--	--	10	\$7
Unwrought:						
Refined zinc	775,000	2,350,000	61,100	\$153,000	751,000	2,000,000
Zinc alloys	4,390	14,300	78	230	1,490	4,350
Wrought:						
Bars, rods, profiles, wire	3,470	13,900	232	801	2,770	9,740
Plates, sheets, strip, foil	5,410	16,400	248	997	2,790	11,700
Ash and residues:						
Hard zinc spelter	19	31	--	--	20	17
Zinc dross and skimmings	4,300	8,200	232	358	3,440	5,450
Other (zinc content)	1,250	823	--	--	1,320	784
Other:						
Powders, flakes, dust	26,600	106,000	1,990	7,150	23,900	89,000
Waste and scrap	12,900	22,000	1,040	1,500	9,680	16,900
Chemicals:						
Lithopone	272	822	97	375	1,110	3,900
Zinc oxide	115,000	334,000	7,930	19,900	92,100	253,000
Zinc chloride	208	1,840	6	64	113	1,080
Zinc sulfate	98,800	106,000	7,280	5,460	66,500	60,300
Zinc sulfide	2,730	10,400	19	139	909	3,460

-- Zero.

¹Data are rounded to no more than three significant digits.

²May include revisions to previously published data.

Source: U.S. Census Bureau.

TABLE 4
U.S. IMPORTS OF ZINC, BY TYPE OF MATERIAL AND COUNTRY OR LOCALITY¹

(Metric tons, gross weight, unless otherwise specified)

Material and country or locality	General imports			Imports for consumption		
	2018	2019		2018	2019	
		November	January–November ²		November	January–November ²
Ore and concentrate (zinc content):						
Canada	(3)	--	10	(3)	--	10
China	32	--	--	32	--	--
Total	32	--	10	32	--	10
Refined zinc:						
Australia	--	--	--	676	--	--
Belgium	--	--	--	4,340	99	318
Brazil	601	1,320	8,370	601	1,320	8,370
Canada	524,000	35,700	471,000	524,000	35,700	471,000
China	22	--	49	5,380	1,430	5,000
India	2,840	--	--	2,840	--	--
Korea, Republic of	--	--	--	6,810	50	224
Mexico	101,000	13,000	127,000	101,000	13,000	127,000
Namibia	--	--	--	122	--	--
Netherlands	--	--	--	6,040	--	3,040
Peru	46,300	7,030	57,700	46,300	7,030	57,700
Poland	641	--	268	641	--	268
South Africa	5,480	--	--	--	--	--
Spain	20,000	--	14,500	76,100	2,460	77,900
Taiwan	36	(3)	62	36	(3)	62
Other	3	--	6	3	--	6
Total	701,000	57,100	679,000	775,000	61,100	751,000
Oxide:						
Australia	127	41	282	127	41	282
Belgium	6	1	30	6	1	30
Brazil	127	--	5	127	--	5
Canada	51,200	3,150	41,200	51,200	3,150	41,200
China	422	32	171	422	32	171
El Salvador	--	--	20	--	--	20
France	16	--	12	16	--	12
Germany	1,150	145	1,280	1,150	145	1,280
Greece	120	80	300	120	80	300
Hong Kong	58	--	5	58	--	5
India	119	10	74	119	10	74
Italy	19	20	42	19	20	42
Japan	776	40	862	776	40	862
Korea, Republic of	76	4	76	76	4	76
Mexico	49,800	3,720	36,200	49,800	3,720	36,200
Netherlands	8,400	624	8,300	8,400	624	8,300
Peru	2,540	62	2,760	2,540	62	2,760
Philippines	46	--	--	46	--	--
Russia	--	(3)	20	--	(3)	20
United Kingdom	105	--	424	105	--	424
Other	59	--	1	59	--	1
Total	115,000	7,930	92,100	115,000	7,930	92,100

-- Zero.

¹Data are rounded to no more than three significant digits; may not add to totals shown.

²May include revisions to previously published data.

³Less than ½ unit.

Source: U.S. Census Bureau.

TABLE 5
U.S. EXPORTS OF ZINC¹

(Gross weight, unless otherwise specified)

Material	2018		2019			
	Quantity (metric tons)	Value (thousands)	November		January–November ²	
			Quantity (metric tons)	Value (thousands)	Quantity (metric tons)	Value (thousands)
Ore and concentrate (zinc content)	806,000	\$1,530,000	45,000	\$77,000	850,000	\$1,380,000
Unwrought:						
Refined zinc	23,300	58,000	333	985	4,900	13,400
Zinc alloys	21,800	67,200	1,740	4,970	20,000	58,900
Wrought:						
Bars, rods, profiles, wire	10,600	30,600	902	2,910	9,470	27,900
Plates, sheets, strip, foil	7,170	29,900	385	1,730	5,630	22,200
Ash and residues:						
Hard zinc spelter	8,300	16,200	762	1,090	8,170	14,900
Other (zinc content)	23,900	43,000	2,270	3,230	23,200	36,200
Other:						
Powders, flakes, dust	13,500	56,600	804	3,000	12,500	45,300
Waste and scrap	40,400	49,800	1,980	2,420	28,900	37,600
Chemicals:						
Lithopone	179	1,280	15	74	161	865
Zinc oxide	60,200	91,800	3,830	4,720	14,200	29,100
Zinc chloride	281	440	7	11	185	316
Zinc sulfate	1,000	879	34	28	483	633
Zinc sulfide	1,730	15,900	141	1,260	1,960	15,900

¹Data are rounded to no more than three significant digits.

²May include revisions to previously published data.

Source: U.S. Census Bureau.

TABLE 6
AVERAGE PRICES FOR SPECIAL HIGH GRADE ZINC

Period	North	London Metal Exchange	
	American ¹ ¢/lb.	cash ² ¢/lb.	\$/t
2018:			
November	126.11	117.58	2,592.28
December	127.69	119.06	2,624.87
January–December	141.05	132.66	2,924.55
2019:			
January	124.74	116.05	2,558.49
February	131.17	122.58	2,702.34
March	137.84	129.32	2,850.91
April	141.88	133.26	2,937.96
May	133.37	124.59	2,746.79
June	126.07	118.01	2,601.56
July	118.64	110.72	2,440.96
August	111.45	103.17	2,274.60
September	113.93	105.20	2,319.16
October	119.71	110.90	2,444.99
November	119.11	110.33	2,432.43
January–November	125.26	116.74	2,573.65

¹Platts Metals Week North American price. Based on the London Metal Exchange cash price plus premium.

²Average of the cash buyer price and the cash seller and settlement price.

Source: Platts Metals Week.

TABLE 7
LONDON METAL EXCHANGE (LME) STOCKS OF SPECIAL HIGH GRADE ZINC, END OF PERIOD

(Metric tons)

Period	United States			Asia	Europe	Other	Total LME
	Chicago, IL	New Orleans, LA	Total				
2018:							
November	--	103,575	103,575	--	8,975	25	112,575
December	350	93,625	93,975	--	35,000	25	129,000
2019:							
January	25	84,000	84,025	--	29,150	25	113,200
February	--	56,625	56,625	--	7,900	25	64,550
March	--	45,900	45,900	--	5,350	25	51,275
April	--	46,475	46,475	--	38,575	--	85,050
May	--	44,900	44,900	325	54,900	250 ^f	100,375
June	--	43,825	43,825	600	50,500	200 ^f	95,125
July	--	41,925	41,925	4,475	32,325	625 ^f	79,350
August	--	33,875	33,875	4,150	28,375	575 ^f	66,975
September	--	27,175	27,175	18,275	20,725	575 ^f	66,750
October	--	18,850	18,850	17,975	17,100	575 ^f	54,500
November	--	12,475	12,475	25,175	20,975	575	59,200

^fRevised. -- Zero.

Source: London Metal Exchange, Ltd.