

Mineral Industry Surveys

For information, contact:

Christine L. Thomas, Zinc Commodity Specialist
 National Minerals Information Center
 U.S. Geological Survey
 989 National Center
 Reston, VA 20192
 Telephone: (703) 648-7713 Fax: (703) 648-7757
 Email: clthomas@usgs.gov

Hodan A. Fatah (Data)
 Telephone: (703) 648-4971
 Fax: (703) 648-7975
 Email: hfatah@usgs.gov

Internet: <http://minerals.usgs.gov/minerals/>

ZINC IN AUGUST 2018

Domestic mine production (recoverable) of zinc in August 2018 was 67,300 metric tons (t) (tables 1, 2). Average daily mine production in August was 2,170 t, 10% less than that in July and 8% less than that in August 2017 (fig. 1).

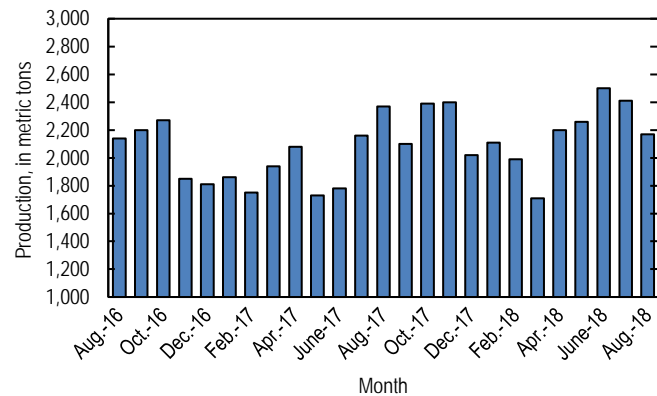


Figure 1. Average daily domestic zinc mine production (recoverable) from August 2016 through August 2018.

Stocks and Prices

Global London Metal Exchange Ltd. (LME) stocks of Special High Grade (SHG) zinc were 239,175 t in August, essentially unchanged from stocks at the end of July and slightly less than stocks at the end of August 2017 (fig. 2, table 7).

The monthly average Platts Metals Week North American SHG zinc price in August 2018 was \$1.22 per pound, 5% less than that in July and 15% less than that in August 2017. The August 2018 average LME cash price for SHG zinc was \$2,510.05 per metric ton, 6% less than that in the previous month and 16% less than that in August 2017 (fig. 3, table 6).

The North American premium to the LME cash price in August 2018 averaged about 8.28 cents per pound, essentially unchanged from that in July and 5% less than that in August 2017 (fig. 3, table 6).

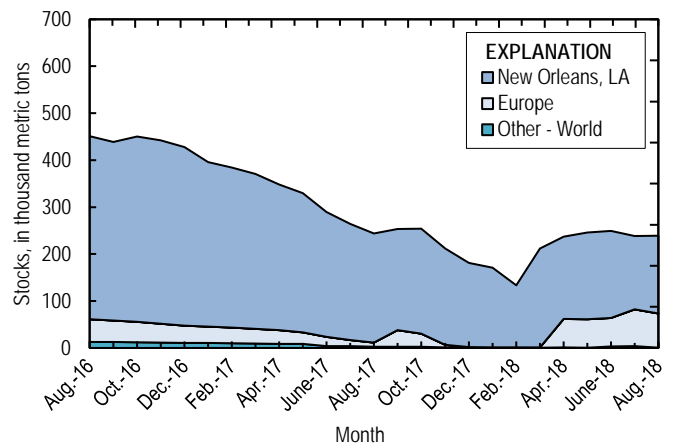


Figure 2. Global LME stocks of Special High Grade zinc, monthend, from August 2016 through August 2018. Source: London Metal Exchange Ltd.

Update

In September, American Zinc Recycling Corp. (Pittsburgh, PA) announced plans to restart its Mooresboro, NC, zinc plant in late March or early April 2019. The plant had been idle for nearly 3 years. The facility was expected to run at its full 155,000-metric-ton-per-year capacity by the end of 2019 (Barker, 2018).

Reference Cited

Barker, Dalton, 2018, American Zinc plans N Carolina plant restart: American Metal Market, September 27. (Accessed October 9, 2018, via <http://www.amm.com/>)

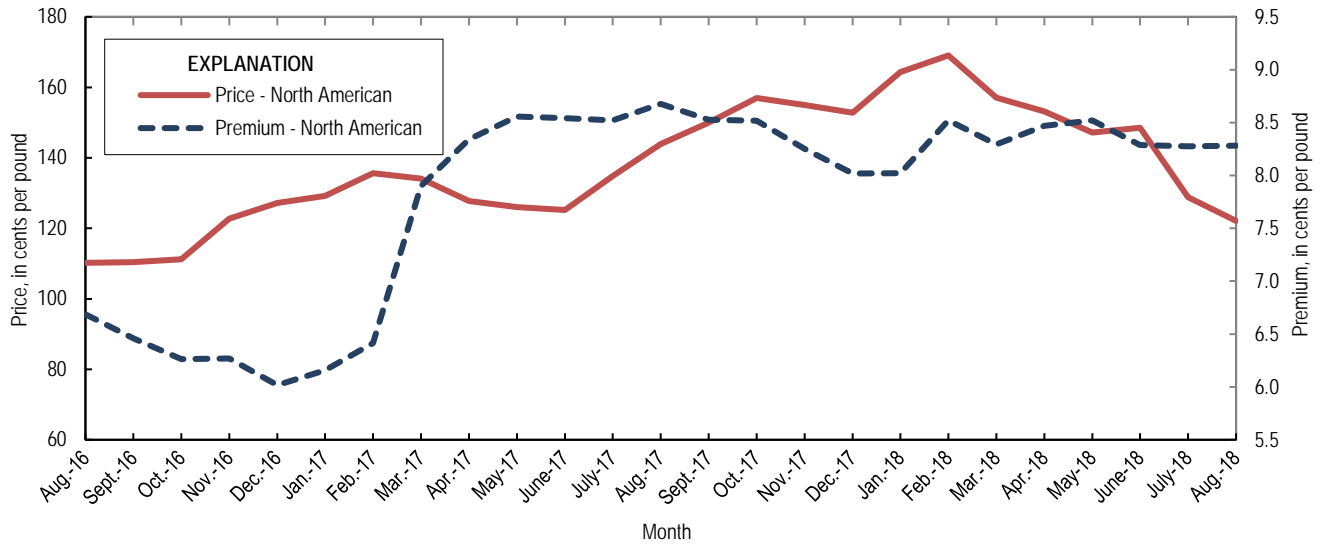


Figure 3. Average monthly North American price and premium for Special High Grade zinc from August 2016 through August 2018. Source: Platts Metals Week.

List services and web feed subscribers are the first to receive notification of USGS minerals information publications and data releases. For information on how to subscribe, go to <http://minerals.usgs.gov/minerals/>.

TABLE 1
SALIENT ZINC STATISTICS¹

(Metric tons, unless otherwise specified)

	2017	2018		
	January– December ^p	July	August	January– August ²
Production:				
Mine, zinc content of concentrate ³	774,000	77,300	69,600	545,000
Mine, recoverable zinc ³	748,000	74,700	67,300	527,000
Smelter, refined zinc ^e	132,000	11,500	11,500	82,500
Consumption of refined zinc, apparent ⁴	829,000	68,300	78,300	585,000
Imports for consumption:				
Ore and concentrate (zinc content)	6,780	--	--	32
Refined zinc	729,000	58,600	69,000	516,000
Exports:				
Ore and concentrate (zinc content)	682,000	191,000	188,000	489,000
Refined zinc	32,200	1,880	2,160	14,400
Price:⁵				
London Metal Exchange cash, average, dollars per metric ton	2,893.52	2,658.18 ^f	2,510.05	3,096.68
Platts Metals Week North American, average, cents per pound	139.28	128.85	122.14	148.80

^cEstimated. ^pPreliminary. ^rRevised. -- Zero.

¹Data are rounded to no more than three significant digits, except prices; may not add to totals shown.

²May include revisions to previously published data.

³Reported zinc content in both zinc and lead concentrates.

⁴Smelter production plus imports for consumption minus domestic exports.

⁵Special High Grade Zinc.

TABLE 2
MINE AND SMELTER PRODUCTION OF ZINC
IN THE UNITED STATES¹

(Metric tons)

Period	Mine ²		Smelter ^e
	Zinc content	Recoverable	
2017:			
August	76,000	73,500	9,920
September	65,000	62,900	9,920
October	76,400	73,900	11,900
November	74,500	72,100	11,900
December	64,800	62,700	11,900
January–December	774,000	748,000	132,000
2018:			
January	67,600	65,400	10,500
February	57,600	55,700	6,050
March	54,900	53,000	11,300
April	67,700	65,900	10,600
May	72,500	70,100	10,600
June	77,500	74,900	10,600
July	77,300	74,700	11,500
August	69,600	67,300	11,500
January–August	545,000	527,000	82,500

^eEstimated.

¹Data are rounded to no more than three significant digits; may not add to totals shown.

²Includes the zinc content in both lead and zinc concentrates.

TABLE 3
U.S. IMPORTS FOR CONSUMPTION OF ZINC¹

(Gross weight, unless otherwise specified)

Material	2018					
	2017		August		January–August ²	
	Quantity (metric tons)	Value (thousands)	Quantity (metric tons)	Value (thousands)	Quantity (metric tons)	Value (thousands)
Ore and concentrate (zinc content)	6,780	\$14,900	--	--	32	\$23
Unwrought:						
Refined zinc	729,000	2,060,000	69,000	\$193,000	516,000	1,660,000
Zinc alloys	7,970	23,400	280	775	3,300	11,000
Wrought:						
Bars, rods, profiles, wire	2,980	11,400	396	1,600	2,380	10,200
Plates, sheets, strip, foil	3,690	14,800	515	1,520	3,980	11,900
Ash and residues:						
Hard zinc spelter	190	344	--	--	--	--
Zinc dross and skimmings	6,350	11,900	384	640	3,100	6,230
Other (zinc content)	1,500	843	65	38	625	418
Other:						
Powders, flakes, dust	27,100	97,600	2,300	9,150	18,100	73,900
Waste and scrap	11,100	20,200	1,170	1,630	7,800	15,000
Chemicals:						
Lithopone	1,940	1,860	6	16	177	565
Zinc oxide	114,000	294,000	10,900	28,500	79,600	240,000
Zinc chloride	204	1,770	10	49	143	1,250
Zinc sulfate	91,100	85,400	7,720	8,620	57,800	61,700
Zinc sulfide	2,140	6,490	211	925	1,950	7,440

-- Zero.

¹Data are rounded to no more than three significant digits.

²May include revisions to previously published data.

Source: U.S. Census Bureau.

TABLE 4
U.S. IMPORTS OF ZINC, BY TYPE OF MATERIAL AND COUNTRY OR LOCALITY¹

(Metric tons, gross weight, unless otherwise specified)

Material and country or locality	General imports			Imports for consumption		
	2017	2018		2017	2018	
		August	January–August ²		August	January–August ²
Ore and concentrate (zinc content):						
Canada	23	--	(3)	23	--	(3)
China	--	--	32	--	--	32
Peru	6,760	--	--	6,760	--	--
Total	6,780	--	32	6,780	--	32
Refined zinc:						
Australia	47,700	--	--	103,000	--	676
Belgium	--	--	--	18,300	199	1,790
Canada	393,000	42,800	351,000	393,000	42,800	351,000
China	12	10	17	990	213	2,530
India	12,500	--	2,840	12,500	--	2,840
Japan	--	--	--	225	--	--
Korea, Republic of	2,010	--	--	3,550	--	5,430
Mexico	86,900	11,100	66,800	86,900	11,100	66,800
Namibia	--	--	--	450	--	122
Netherlands	--	--	--	3,070	--	4,660
Peru	54,400	3,080	31,600	54,400	3,080	31,600
Poland	292	--	349	292	--	349
Spain	21,000	--	20,000	53,000	11,700	48,700
Taiwan	15	--	5	15	--	5
Other [5 countries and (or) localities]	365	--	5,490	365	--	2
Total	618,000	56,900	478,000	729,000	69,000	516,000
Oxide:						
Australia	91	1	90	91	1	90
Belgium	9	--	--	9	--	--
Brazil	(3)	--	--	(3)	--	--
Canada	63,200	4,240	37,400	63,200	4,240	37,400
China	217	22	194	217	22	194
France	24	--	16	24	--	16
Germany	2,650	105	783	2,650	105	783
Hong Kong	9	28	58	9	28	58
India	60	--	81	60	--	81
Italy	12	13	17	12	13	17
Japan	484	50	520	484	50	520
Korea, Republic of	16	--	21	16	--	21
Mexico	37,100	5,290	33,700	37,100	5,290	33,700
Netherlands	8,770	505	4,960	8,770	505	4,960
Peru	812	647	1,520	812	647	1,520
Spain	7	--	--	7	--	--
Taiwan	--	--	10	--	--	10
Thailand	2	--	2	2	--	2
United Kingdom	355	--	99	355	--	99
Other [6 countries and (or) localities]	--	42	112	--	42	112
Total	114,000	10,900	79,600	114,000	10,900	79,600

-- Zero.

¹Data are rounded to no more than three significant digits; may not add to totals shown.

²May include revisions to previously published data.

³Less than ½ unit.

Source: U.S. Census Bureau.

TABLE 5
U.S. EXPORTS OF ZINC¹

(Gross weight, unless otherwise specified)

Material	2018					
	2017		August		January–August ²	
	Quantity (metric tons)	Value (thousands)	Quantity (metric tons)	Value (thousands)	Quantity (metric tons)	Value (thousands)
Ore and concentrate (zinc content)	682,000	\$1,430,000	188,000	\$352,000	489,000	\$951,000
Unwrought:						
Refined zinc	32,200	76,000	2,160	5,130	14,400	35,300
Zinc alloys	14,500	42,600	1,730	5,270	15,100	47,300
Wrought:						
Bars, rods, profiles, wire	9,110	22,100	977	2,840	6,850	20,200
Plates, sheets, strip, foil	7,670	29,400	520	2,170	5,150	21,500
Ash and residues:						
Hard zinc spelter	8,360	16,500	706	1,590	5,210	10,700
Other (zinc content)	19,200	31,700	1,830	3,170	15,300	28,700
Other:						
Powders, flakes, dust	12,800	40,700	1,350	5,180	9,030	38,600
Waste and scrap	33,600	41,100	3,220	4,140	30,800	35,900
Chemicals:						
Lithopone	762	4,630	16	118	144	932
Zinc oxide	66,100	90,100	3,780	5,610	39,200	63,900
Zinc chloride	288	498	10	18	166	279
Zinc sulfate	776	871	15	17	669	584
Zinc sulfide	636	16,200	43	1,380	818	10,700

¹Data are rounded to no more than three significant digits.

²May include revisions to previously published data.

Source: U.S. Census Bureau.

TABLE 6
AVERAGE PRICES FOR SPECIAL HIGH GRADE ZINC

Period	North	London Metal Exchange	
	American ¹	cash ²	
	¢/lb.	¢/lb.	\$/t
2017:			
August	143.91	135.24	2,981.44
September	150.01	141.48	3,119.18
October	157.00	148.48	3,273.52
November	155.02	146.77	3,235.61
December	152.81	144.79	3,192.04
January–December	139.28	131.25	2,893.52
2018:			
January	164.36	156.34	3,446.75
February	169.06	160.54	3,539.35
March	157.07	148.78	3,280.02
April	153.19	144.72	3,190.48
May	147.20	138.68	3,057.41
June	148.50	140.22	3,091.21
July	128.85	120.57	2,658.18
August	122.14	113.85	2,510.05
January–August	148.80	140.46	3,096.68

¹Platts Metals Week North American price. Based on the London Metal Exchange cash price plus premium.

²Average of the cash buyer price and the cash seller and settlement price.

Source: Platts Metals Week.

TABLE 7
LONDON METAL EXCHANGE (LME) STOCKS OF SPECIAL HIGH GRADE ZINC, END OF PERIOD

(Metric tons)

Period	United States		Europe	Other	Total LME
	New Orleans, LA	Total			
2017:					
August	232,325	232,325	8,875	2,825	244,025
September	215,100	215,100	35,825	2,325	253,250
October	223,775	223,775	27,925	2,325	254,025
November	204,950	204,950	5,425	1,150	211,525
December	179,225	179,225	925	825	180,975
2018:					
January	169,325	169,325	600	775	170,700
February	132,100	132,100	600	775	133,475
March	210,175	210,175	600	875	211,650
April	175,600	175,600	60,650	1,025	237,275
May	184,125	184,125	60,650	875	245,650
June	185,425	185,425	60,650	3,175	249,250
July	155,900	155,900	78,150	4,075	238,125
August	165,375	165,375	73,125	675	239,175

Source: London Metal Exchange, Ltd.