

USGS National Hydrography Dataset Newsletter

Vol. 19, No. 7/8, July/August 2020

[National Hydrography Playlist on the USGS YouTube Channel](#)

[A Special Thanks to Sue Buto!](#)

[Retirement of WBD Web Edit Application](#)

[Updating the HMP Training site with the Hydrography Data Model 2.3](#)

[NHDPlus High Resolution and WBD Status Updates](#)

[NHDPlus HR Beta Production Status](#)

[WBD 4-digit Improvement Status](#)

[Photo of the Month](#)

[Hydrography Quiz](#)

National Hydrography Playlist on the USGS YouTube Channel

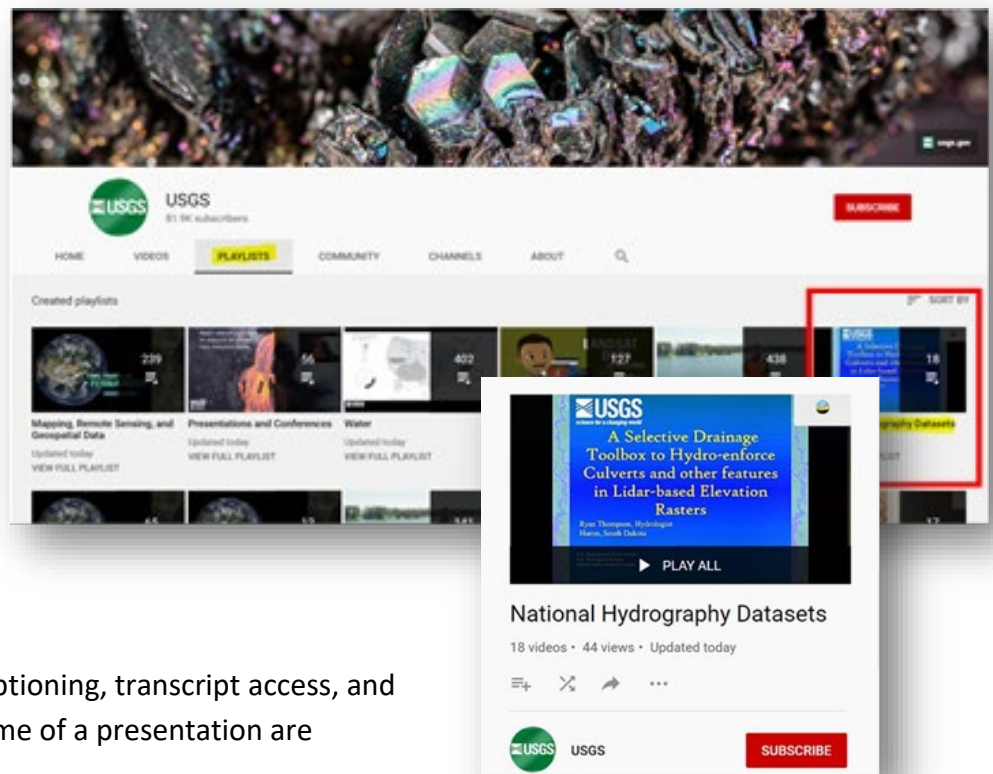
Contact: *Vanessa Baez*

(vbaez@usgs.gov)

The USGS now has a [National Hydrography Datasets playlist](#) on the [USGS YouTube Channel](#). This provides a dedicated space for videos and presentation recordings on a variety of topics related to the National Hydrography Dataset (NHD), Watershed Boundary Dataset (WBD), and NHDPlus High Resolution (NHDPlus HR).

For the newer uploads, Closed Captioning, transcript access, and time-stamp links to the starting time of a presentation are available.

Consider subscribing to the channel so you are notified of new videos!



A Special Thanks to Sue Buto!

Kimberly Jones, Lily Niknami, Becci Anderson, Al Rea, Drew Decker, and the National Hydrography Team!

All of us who work on National Hydrography Datasets at the USGS, particularly the Watershed Boundary Dataset (WBD) National Team, would like to congratulate Sue Buto on her new position as the National Geospatial Program (NGP) Elevation Data Acquisition Lead. Sue has been an integral part of USGS National Hydrography work and the WBD National Team since 2015 when she accepted the role as the WBD Lead.

During her time as WBD Lead, Sue was instrumental in many WBD initiatives including: WBD data prep for NHDPlus HR production, research into NHDPlus HR catchment-WBD integration, and research into the development of HU12 pour points. She spearheaded improvements to the WBD specifications (Federal Standards and Procedures for the National Watershed Boundary Dataset (WBD) v5), to be released shortly, and contributed to WBD schema 2.3 model changes and tool improvements. In addition, Sue was the U.S. lead for the Canada-U.S. Hydrographic Data Harmonization Task Force that was charged with developing seamless hydrography and hydrologic units within international basins along the U.S.-Canada border.

Sue's leadership, thoughtfulness, and ability to get the job done regardless of the circumstances are already greatly missed! We sincerely appreciate Sue's contributions and wish her the best in her new role.

We would also like to thank Drew Decker for continuing in his role as the Acting WBD Lead into the near future.

Retirement of WBD Web Edit Application

Contact: Lily Niknami (lniknami@usgs.gov)

After a thorough assessment, the USGS has made the decision to retire the Watershed Boundary Dataset (WBD) Web Edit Application, effective October 31st, 2020. The WBD Web Edit Application was our first attempt at exploring desktop tool functionality in the web environment. While the tool functioned well, it was not able to provide the robust editing functionality currently available in the desktop tool that is necessary to manage and maintain the WBD. We will instead continue to maintain and enhance functionality in the desktop tool, and will look for opportunities to expand into the online environment in the future. There were many lessons learned and valuable contributions made that will inform and benefit future USGS web application development activities.

All existing edits in the WBD Web Edit Application will be reviewed prior to the retirement of the application. We appreciate the contributions that all of our stewards and editors have made throughout the development and improvement of the application. Thank you for your continued support and contributions!

Any questions about this change, or requests for desktop tool training should be directed to Lily Niknami (lniknami@usgs.gov).

Updating the HMP Training site with the Hydrography Data Model 2.3

Michael Tinker (mdtinker@usgs.gov)

Since the WBD and NHD data models were updated from 2.2.1 to 2.3 in mid-June, checkouts from [Hydrography Maintenance Portal](#) (HMP) production have been delivered in the 2.3 data model.

We have now completed HMP training site updates with the WBD and NHD data model 2.3 as well. As of August 5, all check outs of WBD and NHD hydrography data from the HMP training site are delivered in the 2.3 model.

If you have NHD or WBD training jobs from before August 5, you can continue to practice with that data, but you will not be able to check in. If you do want to practice the check in process, you will need to check out a new job. We suggest you kill all training jobs prior to August 5.

For information on the new data models, the [NHD 2.3 data model poster](#) and [WBD 2.3 data model poster](#) highlight the changes from the 2.2.1 to 2.3 data models.

*Please note that NHD Basics and NHD Update Tools training will commence on a monthly basis beginning in November. Please email nhd@usgs.gov to register or if you have questions.

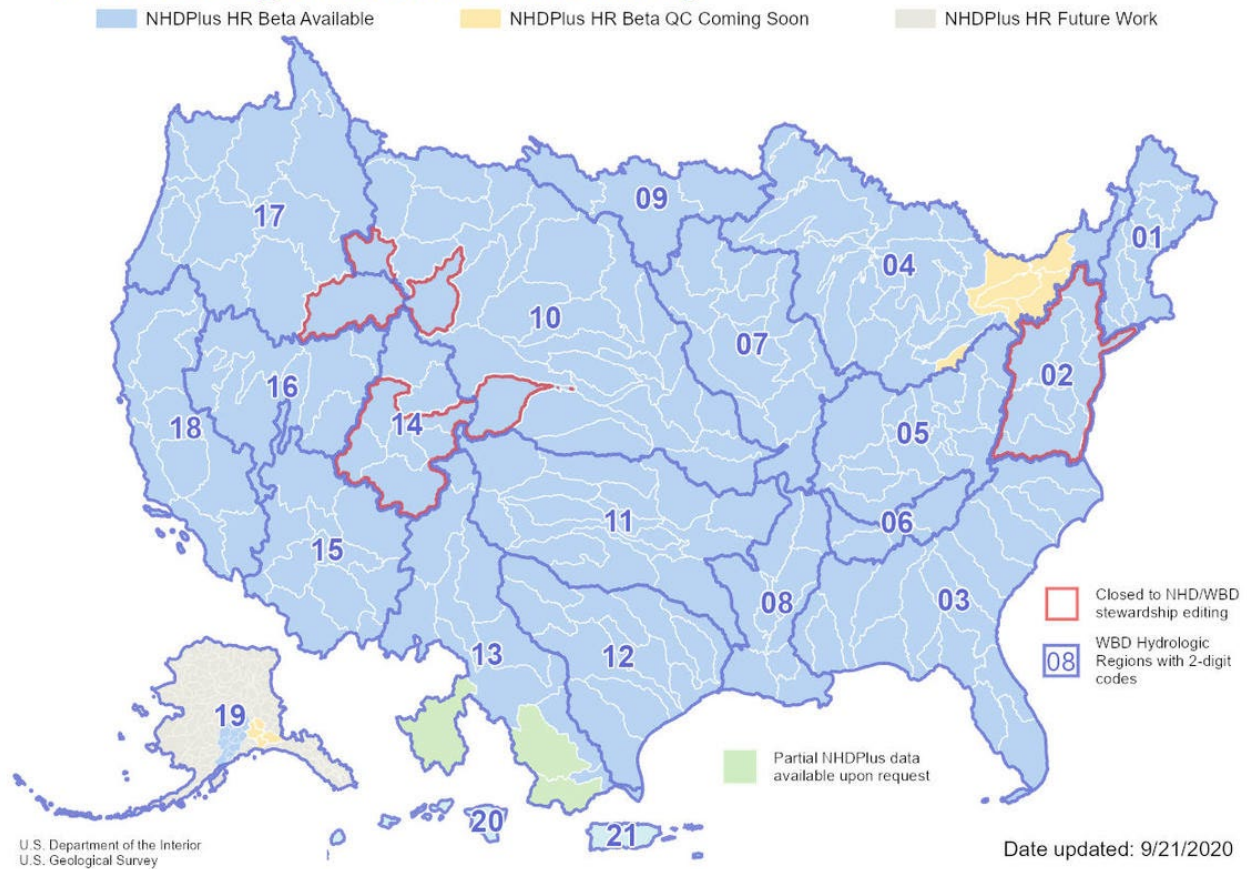
NHDPlus High Resolution and WBD Status Updates

NHDPlus HR Beta Production Status

Contact: Karen Adkins (kadkins@usgs.gov), Laurel Casey (lcasey@contractor.usgs.gov)

The map below provides an overview of NHDPlus HR availability. This status map is updated frequently on the [NHDPlus HR webpage](#). Please contact the National NHD Point of Contact (Joel Skalet, nhd@usgs.gov) or National WBD Point of Contact (Lily Niknami, lniknami@usgs.gov) for more information on the status of NHD and WBD editing.

NHDPlus High Resolution Availability



- Red outline - These areas are currently closed to NHD and WBD editing.
- Blue areas - NHDPlus HR Beta is currently available and Beta QC is either in process or completed for these areas. Please see the [NHDPlus HR Beta QC](#) section of the [NHDPlus HR webpage](#).
- Yellow areas - The NHDPlus HR Beta is in production and the USGS is currently seeking volunteers for the upcoming Beta QC for these areas. Please see the [NHDPlus HR Beta QC](#) section of the [NHDPlus HR webpage](#) for more information.
- Gray areas - NHDPlus HR Beta will be produced at a later date. These areas are currently open for NHD and WBD editing.
- Green areas - The NHDPlus HR Beta was produced using contributing areas in Mexico to improve the NHDPlus HR Beta along the Rio Grande River. Minimal hydrography was included in the Beta build but will be improved when the areas are updated. The NHDPlus HR Beta production data with minimal hydrography content is available upon request.

WBD 4-digit Improvement Status

Contact: Kimberly Jones (kjones@usgs.gov), Lily Niknami (lniknami@usgs.gov)

WBD 4-digit Improvement - Work Completed

- Regions - 01, 02, 03, 04, 05, 06, 07, 08, 09, 10, 11, 12, 13, 14, 15, 16, 17, 18, 20, 21 and 22
- Mexico contributing 4-digit hydrologic units in Region 13
- Region 19 – 19020101, 19020102, 19020103, 19020104, 19020202, 19020301, 19020302, 19020401, 19020402, 19020501, 19020502, 19020503, 19020504, 19020505, 19020601, and 19020602, 19020800

WBD 4-digit Improvement - Currently in Work

- Region 19 (19060102, 19080301, 19070402)

WBD 4-digit Improvement - Future Work

- Region 19 (not listed above)

Photo of the Month

This month's photo by Vicki Lukas is a view of Cedar Creek, Cedarburg, WI, Ozaukee County (Reachcode 04040003000105).

We'd love to see photos of the hydrology near you or from your travels! Please send submissions to **Alexander Jonesi** (ajonesi@usgs.gov).



Hydrography Quiz

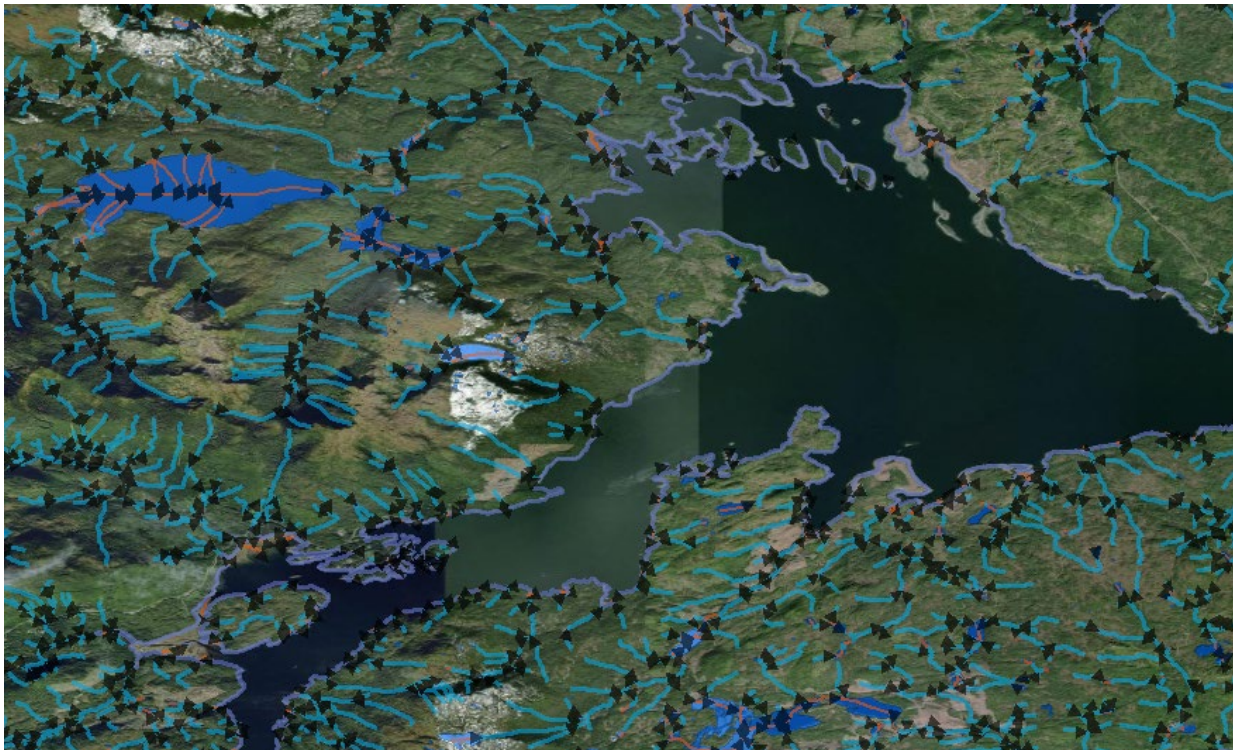
Congratulations to **Joseph Kerski** who won the Hydrography Quiz with the correct answer of **the Snake River!** Joseph Kerski served for 17 years as geographer and cartographer at USGS before joining Esri, where he has served as education manager since 2006. He has always been a big fan of spatial data of all types, and uses NHD data to teach spatial concepts. He also included it in his book, *The GIS Guide to Public Domain Data*. Congrats, Joseph!!

Thanks to the others who played along: Laura Palmer, Evan Hammer, Joshua Keeley, Barbara Rosenbaum, Roger Barlow, Gary Brimley, Robert Olive, and Doug Clark.

This Month's Quiz

By Annalisa Stasey

This bay is the northwestern part of a larger bay, and is located on the eastern coast of the fourth largest island in the U.S. There's a river and a wilderness area nearby that share the same name. It is home to one of the first salmon salteries operated in its region. You can fish the river to catch native populations of Dolly Varden or stay at one of the Forest Service cabins found in the wilderness area.



Please email your answer to Becci Anderson (rdanderson@usgs.gov).

Thank you to this month's USGS National Hydrography Dataset Newsletter contributors:

Vanessa Baez, Kim Jones, Lily Niknami, Mike Tinker, Karen Adkins, Laurel Casey, Vicki Lukas, Alexander Jones, Annalisa Stasey, Al Rea, Drew Decker, and Becci Anderson.

Join Our Community!

For more information, to sign up for the newsletter, or to contribute, please contact Becci Anderson, Hydrography Management and Planning Lead, at rdanderson@usgs.gov.

Visit us anytime at usgs.gov/NHD and follow us on Twitter @USGSTNM

Any use of trade, product, or firm names is for descriptive purposes only and does not imply endorsement by the U.S. Government.