

USGS National Hydrography Dataset Newsletter

Vol. 19, No. 2/3, February/March 2020

[Welcome to the New Partner Support Chief - Drew Lane!](#)

[Elevation-Derived Hydrography Specifications Update](#)

[NHD Training Update](#)

[NHD, WBD, and NHDPlus HR Status Updates](#)

[NHDPlus High Resolution Beta Production Status](#)

[WBD 4-digit Improvement Status](#)

[Photo of the Month](#)

[Hydrography Quiz](#)

[Upcoming USGS Hydrography Calls, Trainings, and Meetings](#)

Welcome to the New Partner Support Chief - Drew Lane!

Contact: Becci Anderson (rdanderson@usgs.gov)

We are very excited to welcome Drew Lane into the Partner Support Chief position at the National Geospatial Technical Operations Center (NGTOC). The Partner Support Chief oversees the stewardship program and leads staff who provide training on NHD and WBD and who maintain and manage NHD and WBD tools and technical documentation. Please welcome Drew to his new position! Here's a little more about Drew:

For more than 5 years, I led the Elevation Systems Development Team in the Systems Development Branch at NGTOC. Prior to NGTOC, I spent several years working as a contractor and civilian at Fort Leonard Wood and the Missouri Army National Guard leading GIS efforts there. I am excited to be starting as the Chief of the Partner Support Section. I look forward to my new role in as the Partner Support Chief. If you'd like to talk, please send an email or call - wlane@usgs.gov, 573- 308-3541.

Elevation-Derived Hydrography Specifications Update

Contact: Christy-Ann Archuleta (carchule@usgs.gov)

The *Elevation-derived Hydrography Acquisition Specifications* and *Elevation-derived Hydrography Representation, Extraction, Attribution, and Delineation Rules (READ Rules)* will be published by the USGS in the coming months. These documents detail the specifications and hydrography feature characteristics for acquiring hydrography data for the National Hydrography Dataset (NHD) from 3D Elevation Program (3DEP) data, including providing a consistent elevation-derived hydrography (EDH) product data structure and set of features for conflation into the NHD. EDH developed using these specifications will be horizontally and

vertically aligned with the 3DEP high-resolution bare-earth digital elevation model data. Feature density will, at a minimum, match that of the high-resolution NHD. The EDH will be suitable for use as breaklines to hydro-flatten digital elevation models, processing for pre-conflation of features to the NHD, and hydro-enforcement of digital elevation models.

Both documents will be available on the [Hydrography Standards and Specifications webpage](#) as soon as they are available, and an email will be sent out to the NHD Newsletter mailing group once they are posted to the webpage.

NHD Training Update

Contact: Joel Skalet (nhd@usgs.gov)

After a brief break, NHD training is back! NHD Basics training is a prerequisite class for NHD Update Tools training and covers the history of the NHD, the NHD model, understanding feature codes and feature types, relationships in schema, and the value of NHD Stewardship. NHD Update Tools training is held in two parts. Part 1 covers downloading data and editing, and Part 2 covers quality control of the data and submitting edits to the National Database.

Upcoming NHD Basics and NHD Update Tools Training are being held at the following times:

- NHD Basics Training – 5/11 and 6/15, 11:30 Eastern Time (2 ½ hours)
- NHD Update Tools Training Part 1 – 5/18 and 6/22, 11:30 Eastern Time (5 hours)
- NHD Update Tools Training Part 2 – 5/26 and 6/29, 11:30 Eastern Time (5 hours)

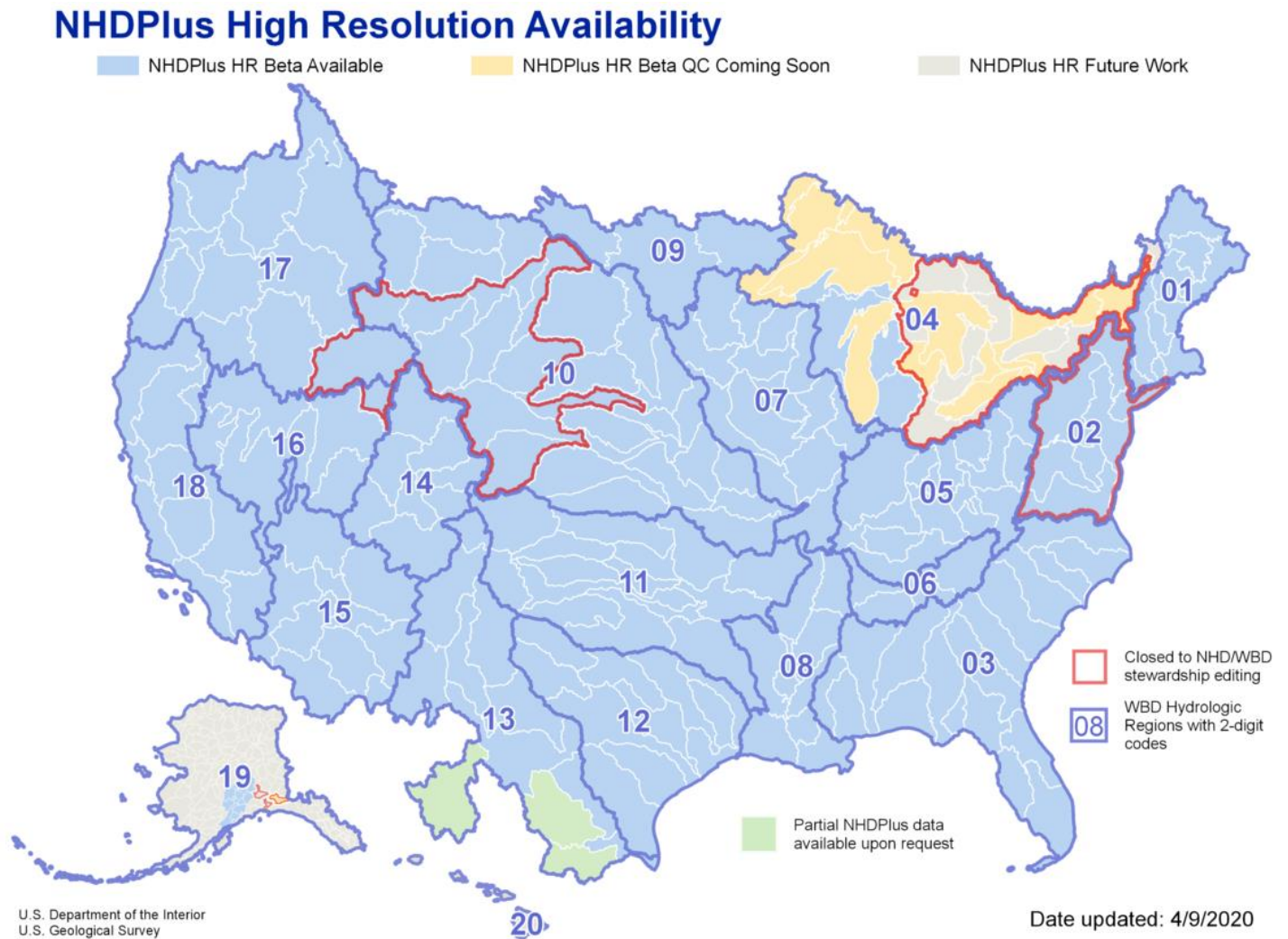
For more information, please email nhd@usgs.gov.

NHD, WBD, and NHDPlus HR Status Updates

NHDPlus High Resolution Beta Production Status

Contact: Karen Adkins (kadkins@usgs.gov), Hayley Thompson (hnthompson@usgs.gov)

The map below provides an overview of NHDPlus HR availability. This status map is updated frequently on the [NHDPlus HR webpage](#).



- Red outline - These areas are currently closed to NHD and WBD editing. Please contact the National NHD Point of Contact (Joel Skalet, nhd@usgs.gov) or National WBD Point of Contact (Lily Niknami, lniknami@usgs.gov) for more information on the status of NHD and WBD editing in these areas.
- Blue areas - NHDPlus HR Beta is currently available and Beta QC is either in process or completed for these areas. Please see the [NHDPlus HR Beta QC](#) section of the [NHDPlus HR webpage](#).

- Yellow areas - The NHDPlus HR Beta is in production and the USGS is currently seeking volunteers for the upcoming Beta QC for these areas. Please see the [NHDPlus HR Beta QC](#) section of the [NHDPlus HR webpage](#) for more information. Please contact the National NHD Point of Contact (Joel Skalet, nhd@usgs.gov) or National WBD Point of Contact (Lily Niknami, lniknami@usgs.gov) for more information on the status of NHD and WBD editing in these areas.
- Gray areas - NHDPlus HR Beta will be produced at a later date. These areas are currently open for NHD and WBD editing.
- Green areas - The NHDPlus HR Beta was produced using contributing areas in Mexico to improve the NHDPlus HR Beta along the Rio Grande River. Minimal hydrography was included in the Beta build but will be improved when the areas are refreshed. The NHDPlus HR Beta production data with minimal hydrography content is available upon request.

WBD 4-digit Improvement Status

Contact: Kimberly Jones (kjones@usgs.gov), Lily Niknami (lniknami@usgs.gov)

WBD 4-digit Improvement - Work Completed

- R Regions - 01, 02, 03, 04, 05, 06, 07, 08, 09, 10, 11, 12, 13, 14, 15, 16, 17, 18, 20, 21 and 22
- Mexico contributing 4-digit hydrologic units in Region 13
- Region 19 - 19020202, 19020301, 19020302, 19020401, 19020402, 19020501, 19020502, 19020503, 19020504, 19020505, 19020601, and 19020602, 19020800

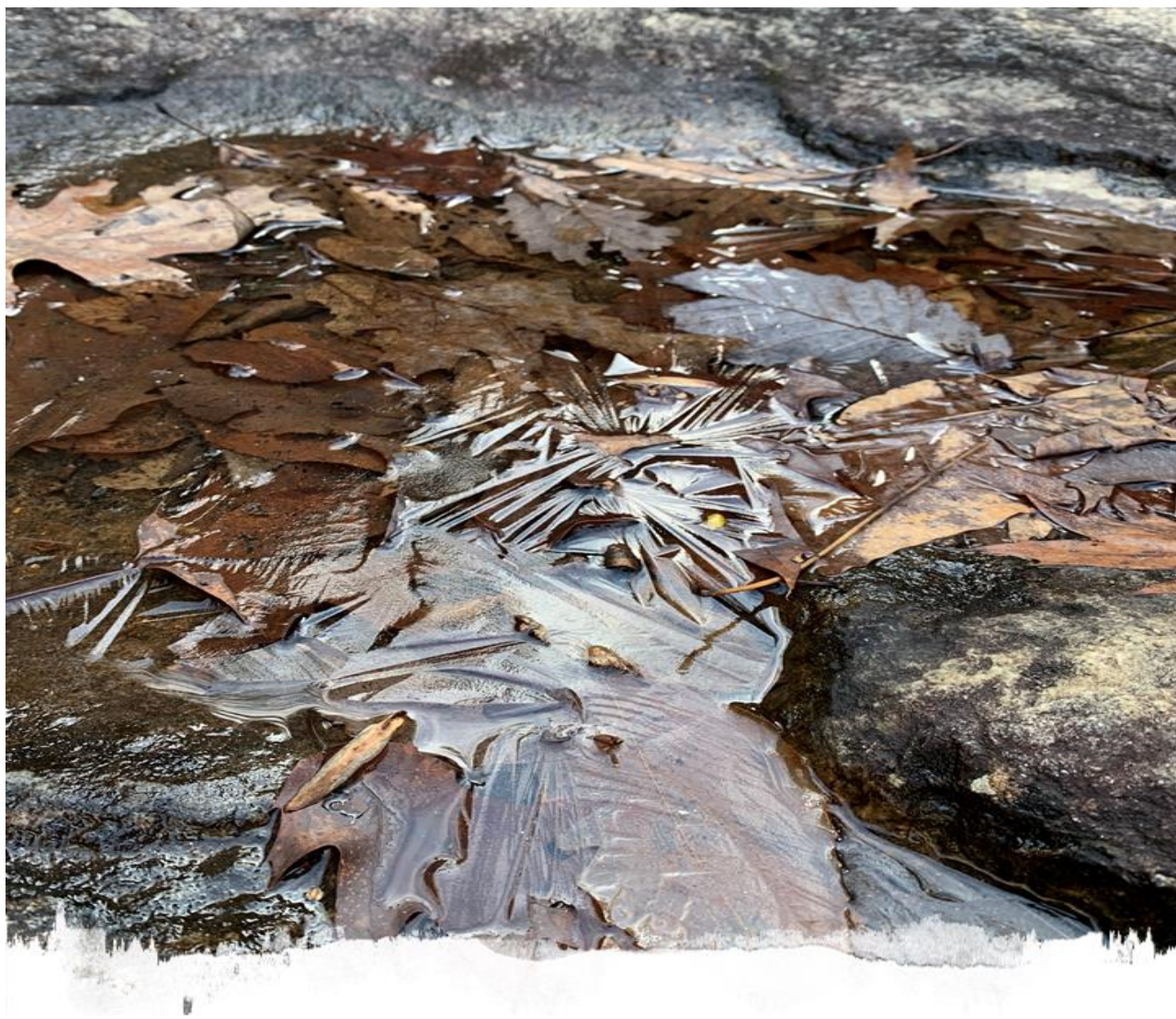
WBD 4-digit Improvement - Currently in Work

- Region 19 (19020101, 19020102, 19020103, 19020104)

WBD 4-digit Improvement - Future Work

- Region 19 (not listed above)
-

Photo of the Month



The top layer of ice forms on the periphery of the High Falls plunge pool off the High Falls Trail – in Nantahala National Forest, North Carolina. Eventually the coldest water freezes to form a layer of ice and becomes significantly less dense than the water and continues to float on the surface. Photo taken by Vanessa Baez.

We'd love to see photos of the hydrology near you or from your travels! Please send submissions to Alexander Jones (ajonesi@usgs.gov).

Hydrography Quiz

Congratulations to **Jim McDonald** who won the February Hydrography Quiz with the correct answer of the **Kabetogama Lake** in **Voyageurs National Park River**. Jim works for the Ohio Department of Natural Resources (ODNR)-Division of Geological Survey. Great job, Jim!

Thanks to everyone else who played along: George E. Onyullo, Linda Davis, John Studtmann, John P. Lynam, Jen Crea, Roger Barlow, Evan Hammer, Katherine Schipke, Sam Lammie, and Becky Friend.

This Month's Quiz

By Vanessa Baez

This manmade lake was formed when the river was dammed to provide hydroelectric power. It is fed by creeks and streams originating on the western side of the Eastern Continental Divide. Fishermen will find a variety of fish including smallmouth bass, white bass, catfish, perch, bream/bluegill, pickerel, largemouth bass, carp and crappie here. It is in this state's largest of four national forests. If you have read Cicero's essay "On Friendship" you can find this state's Latin motto translated as "To be, rather than to seem".

Please email your answer to
Becci Anderson
(rdanderson@usgs.gov)



Upcoming USGS Hydrography Calls, Trainings, and Meetings

Date	Time	Event
5/6	12:00 PM ET	NHD Technical Exchange Meeting (TEM)
5/11	11:30 AM ET	NHD Basics Training (2 ½ hours)
5/18	11:30 AM ET	NHD Update Tools Training Part 1 (5 hours)
5/26	1:00 PM ET	USGS Hydrography Advisory Call
5/26	11:30 AM ET	NHD Update Tools Training Part 2 (5 hours)
6/10	12:00 PM ET	WBD Technical Exchange Meeting (TEM)
6/15	11:30 AM ET	NHD Basics Training (2 ½ hours)
6/22	11:30 AM ET	NHD Update Tools Training Part 1 (5 hours)
6/29	11:30 AM ET	NHD Update Tools Training Part 2 (5 hours)

To be added to the USGS Hydrography Advisory Call email list, please email nhd@usgs.gov. For information on training, please contact Joel Skalet (nhd@usgs.gov, 608-238-9333 x152). For more information on technical exchange meetings, please see the [Hydrographic Data Community \(HDC\)](#) site. For access to the HDC site, please contact Lily Niknami (lniknami@usgs.gov).

Thank you to this month's USGS National Hydrography Dataset Newsletter contributors:

Drew Lane, Christy-Ann Archuleta, Karen Adkins, Hayley Thompson, Kim Jones, Lily Niknami, Joel Skalet, Vanessa Baez, Alexander Jones, Al Rea, Drew Decker, and Becci Anderson.

Join Our Community!

For more information, to sign up for the newsletter, or to contribute, please contact Becci Anderson, Hydrography Management and Planning Lead, at rdanderson@usgs.gov.

Visit us anytime at usgs.gov/NatHydro and follow us on Twitter @USGSNHD

Any use of trade, product, or firm names is for descriptive purposes only and does not imply endorsement by the U.S. Government.