

EORES Conceptual Data Model

Updated to Release 8.0.0

Release Notes

General:

- Added new web service to list documentation, including documentation_id, document_name, and document_url.

EOR:

- Added documentation_id to the EOR documentation web service.

EOS:

- Added documentation_id to the documentation web services at all levels of the EOS hierarchy.

VTI:

- Added documentation_id to the value tree node documentation and elicitation documentation web services.

The following should be added to the base web service URL for EORES:

EOS Web Service URLs

- ws/get_reports_network_basic_information
- ws/get_reports_network_cost_information
- ws/get_reports_network_documentation
- ws/get_reports_network_key_dates
- ws/get_reports_network_organizational_affiliations
- ws/get_reports_network_palma_id
- ws/get_reports_network_poc
- ws/get_reports_observing_system_basic_information
- ws/get_reports_observing_system_cost_information
- ws/get_reports_observing_system_documentation
- ws/get_reports_observing_system_key_dates
- ws/get_reports_observing_system_organizational_affiliations
- ws/get_reports_observing_system_palma_id
- ws/get_reports_observing_system_poc
- ws/get_reports_platform_aliases
- ws/get_reports_platform_basic_information
- ws/get_reports_platform_cost_information
- ws/get_reports_platform_deployment_profile
- ws/get_reports_platform_documentation
- ws/get_reports_platform_key_dates
- ws/get_reports_platform_organizational_affiliations
- ws/get_reports_platform_palma_id
- ws/get_reports_platform_poc
- ws/get_reports_sensing_element_basic_information
- ws/get_reports_sensing_element_cost_information
- ws/get_reports_sensing_element_documentation
- ws/get_reports_sensing_element_key_dates
- ws/get_reports_sensing_element_organizational_affiliations
- ws/get_reports_sensing_element_palma_id
- ws/get_reports_sensing_element_poc
- ws/get_reports_sensing_element_spectral_bands
- ws/get_reports_sensing_element_spectral_regions
- ws/get_reports_sensing_element_radar_bands
- ws/get_reports_environmental_parameter_basic_information
- ws/get_reports_environmental_parameter_documentation
- ws/get_reports_environmental_parameter_palma_id
- ws/get_reports_eos_only_gcmd_path
- ws/get_reports_eos_hierarchy
- ws/get_reports_network_observing_system_associations
- ws/get_reports_observing_system_platform_associations
- ws/get_reports_platform_sensing_element_associations
- ws/get_reports_sensing_element_environmental_parameter_associations

EOR Web Service URLs

- ws/get_reports_eor_basic_information
- ws/get_reports_eor_documentation
- ws/get_reports_eor_extended_attribute_information
- ws/get_reports_eor_gcmd_information
- ws/get_reports_eor_key_dates
- ws/get_reports_eor_organizational_affiliations
- ws/get_reports_eor_poc
- ws/get_reports_eor_remote_sensing_attribute_information
- ws/get_reports_eor_spectral_requirements
- ws/get_reports_eor_standard_attribute_information
- ws/get_reports_eor_strategic_affiliations
- ws/get_reports_eor_surveyed_product_connections
- ws/get_reports_eor_validation_information
- ws/get_reports_eor_value_tree_connections
- ws/get_reports_eor_only_gcmd_path

VTI Web Service URLs

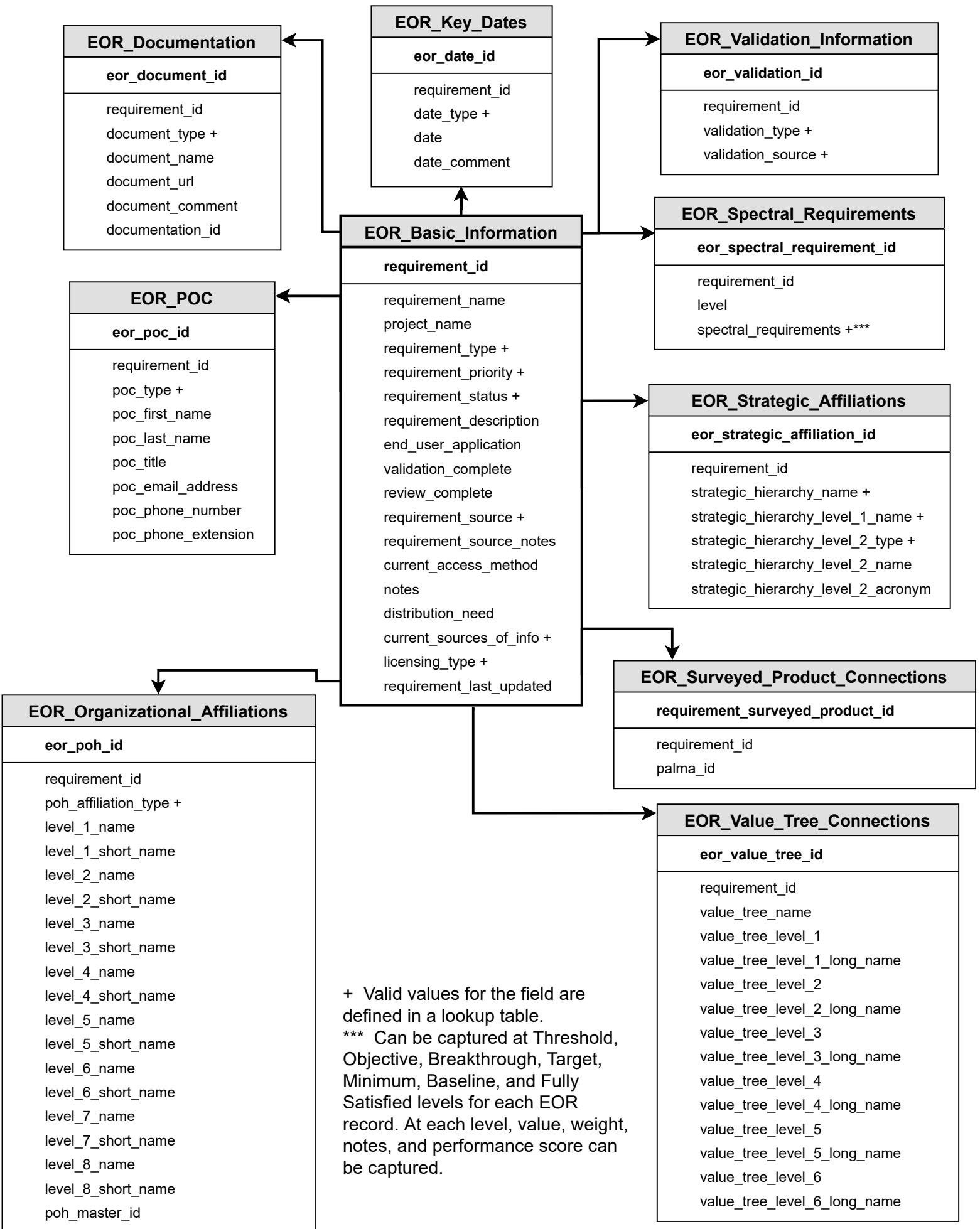
- ws/get_reports_value_tree_name
- ws/get_reports_data_source_groups/EOA2016
- ws/get_reports_data_sources/EOA2016
- ws/get_reports_elicitation_documentation/EOA2016
- ws/get_reports_elicitation_poc/EOA2016
- ws/get_reports_surveyed_product_elicitation_information/EOA2016
- ws/get_reports_surveyed_product_to_data_source/EOA2016
- ws/get_reports_data_source_to_surveyed_product/EOA2016
- ws/get_reports_surveyed_product_to_value_tree_node/EOA2016
- ws/get_reports_value_tree_node/EOA2016
- ws/get_reports_value_tree_node_documentation/EOA2016
- ws/get_reports_value_tree_node_poc/EOA2016

For these URLs, the end of the URL is the name of the value tree dataset (e.g. "EOA2016" in the links listed above). Simply replace this text with the name of another value tree dataset in the database (e.g. "NOSIA-II" or "RCA-EO") to pull information specific to that value tree.

General Web Service URLs

- ws/get_reports_gcmd_master
- ws/get_reports_person
- ws/get_reports_physical_organization_hierarchy
- ws/get_reports_geographic_coverage
- ws/get_reports_documentation

EOR - Requirements and Associated Information



EOR - Requirements GCMD and Attribute Information

EOR_GCMD_Information
requirement_id
primary_gcmd_topic + primary_gcmd_term + primary_gcmd_variable + primary_gcmd_variable_l2 + primary_gcmd_variable_l3 + secondary_gcmd_topic + secondary_gcmd_term + secondary_gcmd_variable + secondary_gcmd_variable_l2 + secondary_gcmd_variable_l3 + tertiary_gcmd_topic + tertiary_gcmd_term + tertiary_gcmd_variable + tertiary_gcmd_variable_l2 + tertiary_gcmd_variable_l3 +

EOR_only_gcmd_path
requirement_id
gcmd_master_id gcmd_category gcmd_topic + gcmd_term + l1_variable + l2_variable + l3_variable +

EOR_Standard_Attribute_Information
requirement_id
level geographic_coverage +*** horizontal_resolution * measurement_accuracy * sampling_interval * vertical_resolution *

EOR_Extended_Attribute_Information
requirement_id
level data_latency * long_term_stability ** measurement_range ** ods_fit_hrs_hods * vertical_range ** length_of_data_record ** other_accuracy * attribute_weighting_rationale other_remarks

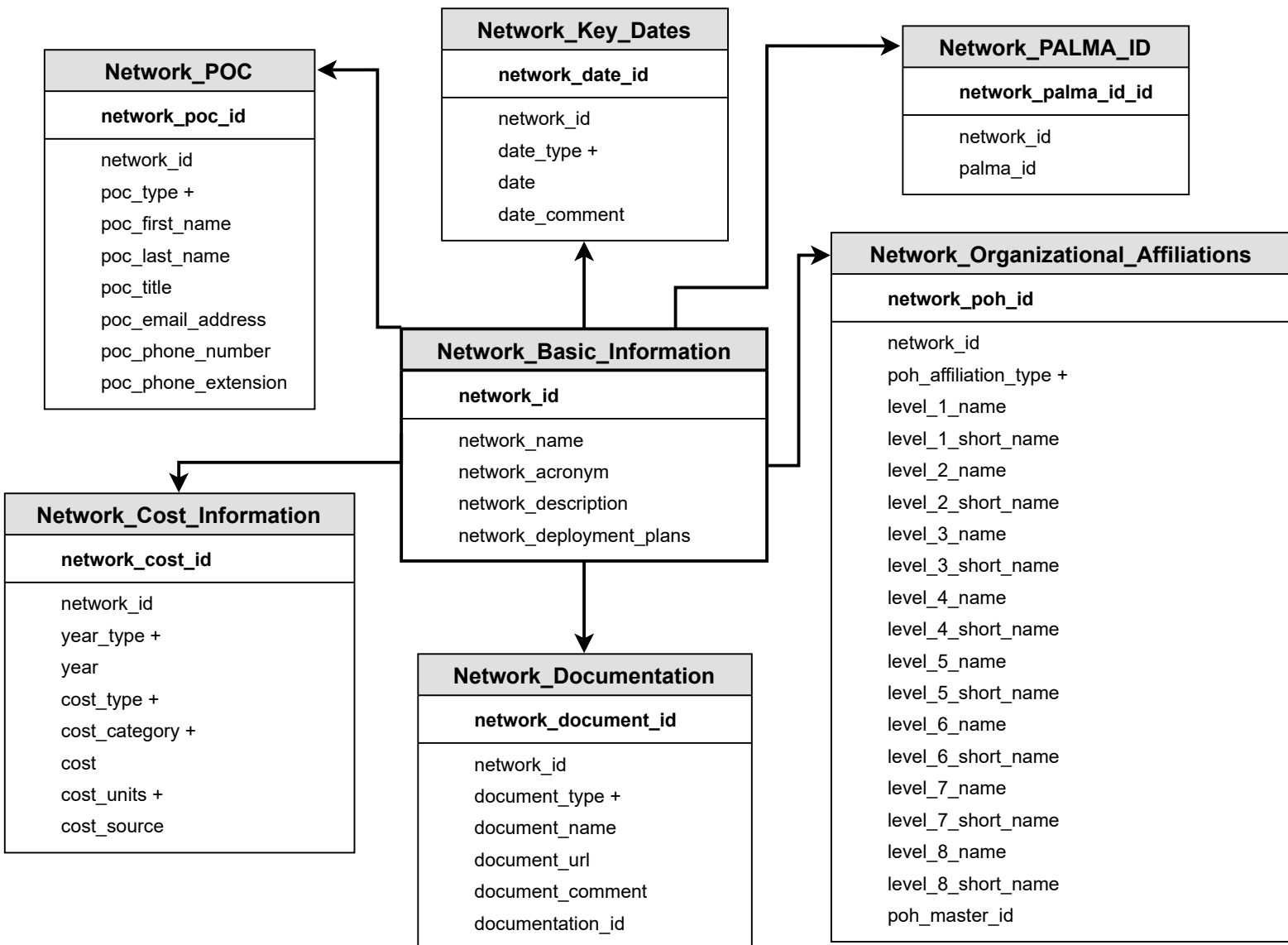
EOR_Remote_Sensing_Attribute_Information
requirement_id
level radiometric_resolution * horizontal_geolocation_accuracy * sampling_conditions +** signal_to_noise_ratio * vertical_geolocation_accuracy *

+ Valid values for the field are defined in a lookup table.

* Can be captured at Threshold, Objective, Breakthrough, Target, Minimum, Baseline, and Fully Satisfied levels for each EOR record. At each level, value, units, weight, trend, notes, and performance score can be captured.

** Can be captured at Threshold, Objective, Breakthrough, Target, Minimum, Baseline, and Fully Satisfied levels for each EOR record. At each level, value, units, weight, notes, and performance score can be captured.

EOS - Observing Networks and Associated Information



+ Valid values for the field are defined in a lookup table.

EOS - Observing Systems and Associated Information

Observing_System_Documentation
system_document_id
system_id
document_type +
document_name
document_url
document_comment
documentation_id

Observing_System_Key_Dates
system_date_id
system_id
date_type +
date
date_comment

Observing_System_POC
system_poc_id
system_id
poc_type +
poc_first_name
poc_last_name
poc_title
poc_email_address
poc_phone_number
poc_phone_extension

Observing_System_Basic_Information
system_id
system_name
system_acronym
system_type +
system_description
system_intended_use +
system_life_cycle_phase +
system_deployment_plans
osc_baseline_observing_system_category +
country_names +
country_code
date_last_updated

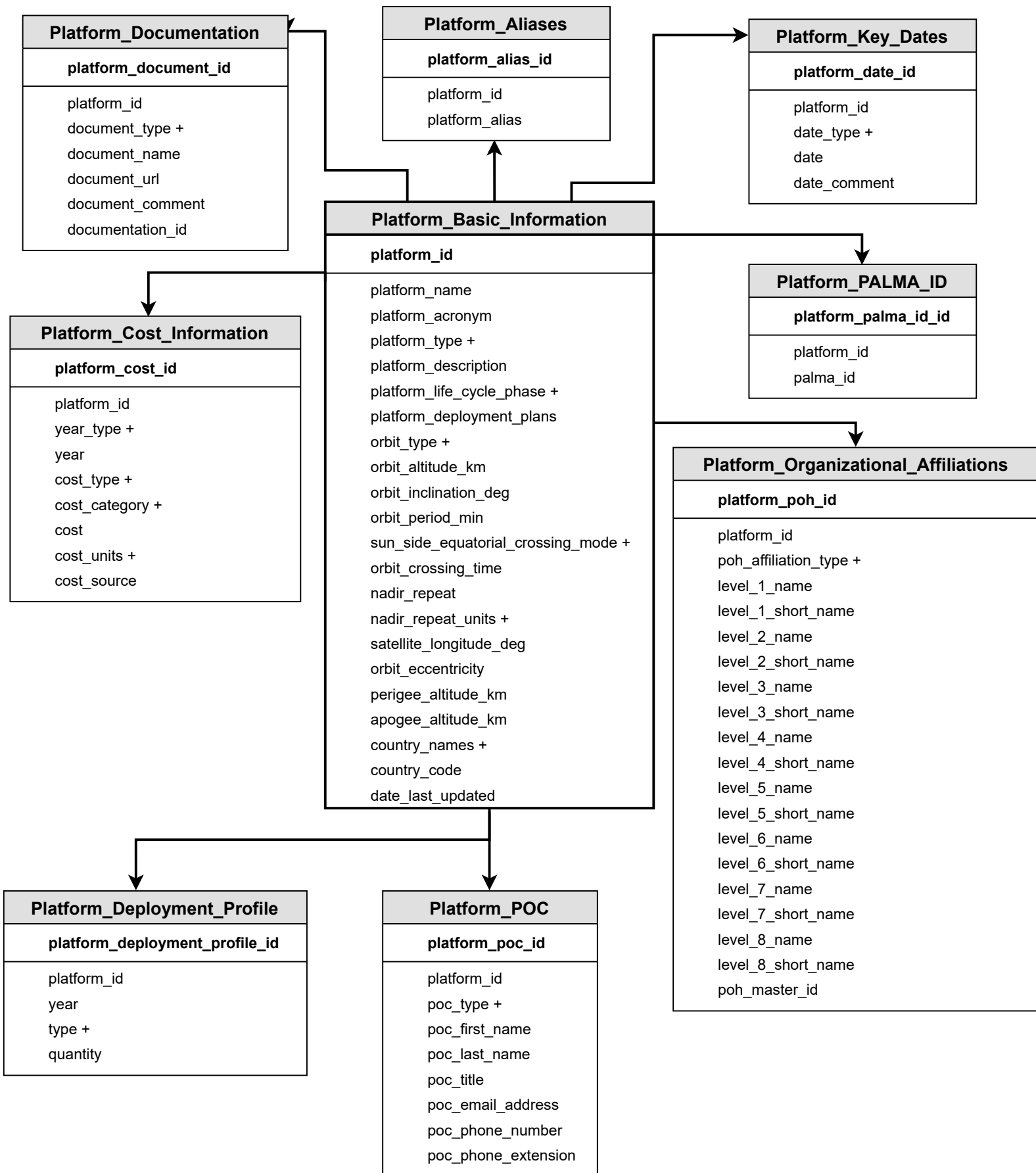
Observing_System_PALMA_ID
system_palma_id_id
system_id
palma_id

Observing_System_Cost_Information
system_cost_id
system_id
year_type +
year
cost_type +
cost_category +
cost
cost_units +
cost_source

Observing_System_Organizational_Affiliations
observing_system_poh_id
system_id
poh_affiliation_type +
level_1_name
level_1_short_name
level_2_name
level_2_short_name
level_3_name
level_3_short_name
level_4_name
level_4_short_name
level_5_name
level_5_short_name
level_6_name
level_6_short_name
level_7_name
level_7_short_name
level_8_name
level_8_short_name
poh_master_id

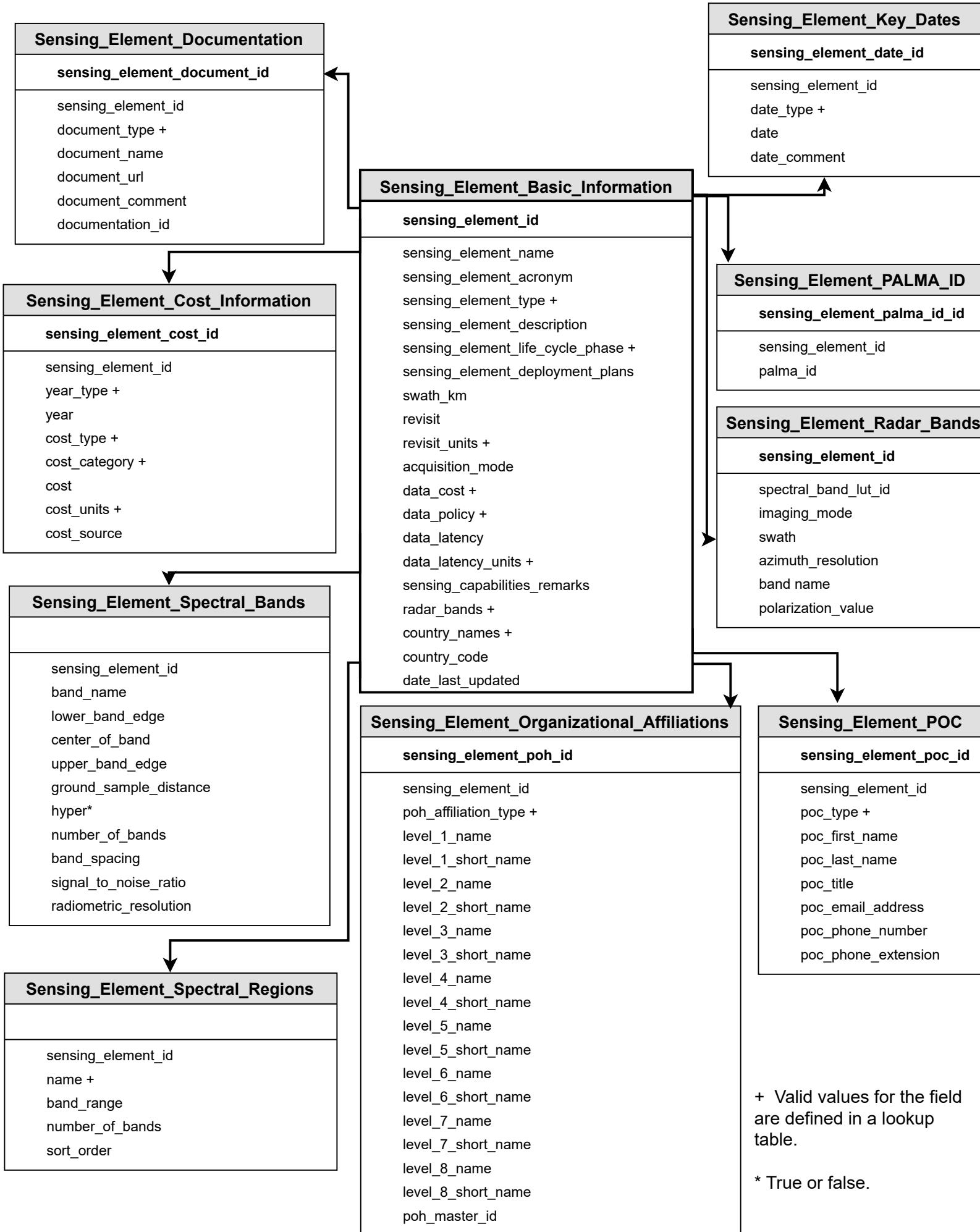
+ Valid values for the field are defined in a lookup table.

EOS - Platforms and Associated Information



+ Valid values for the field are defined in a lookup table.

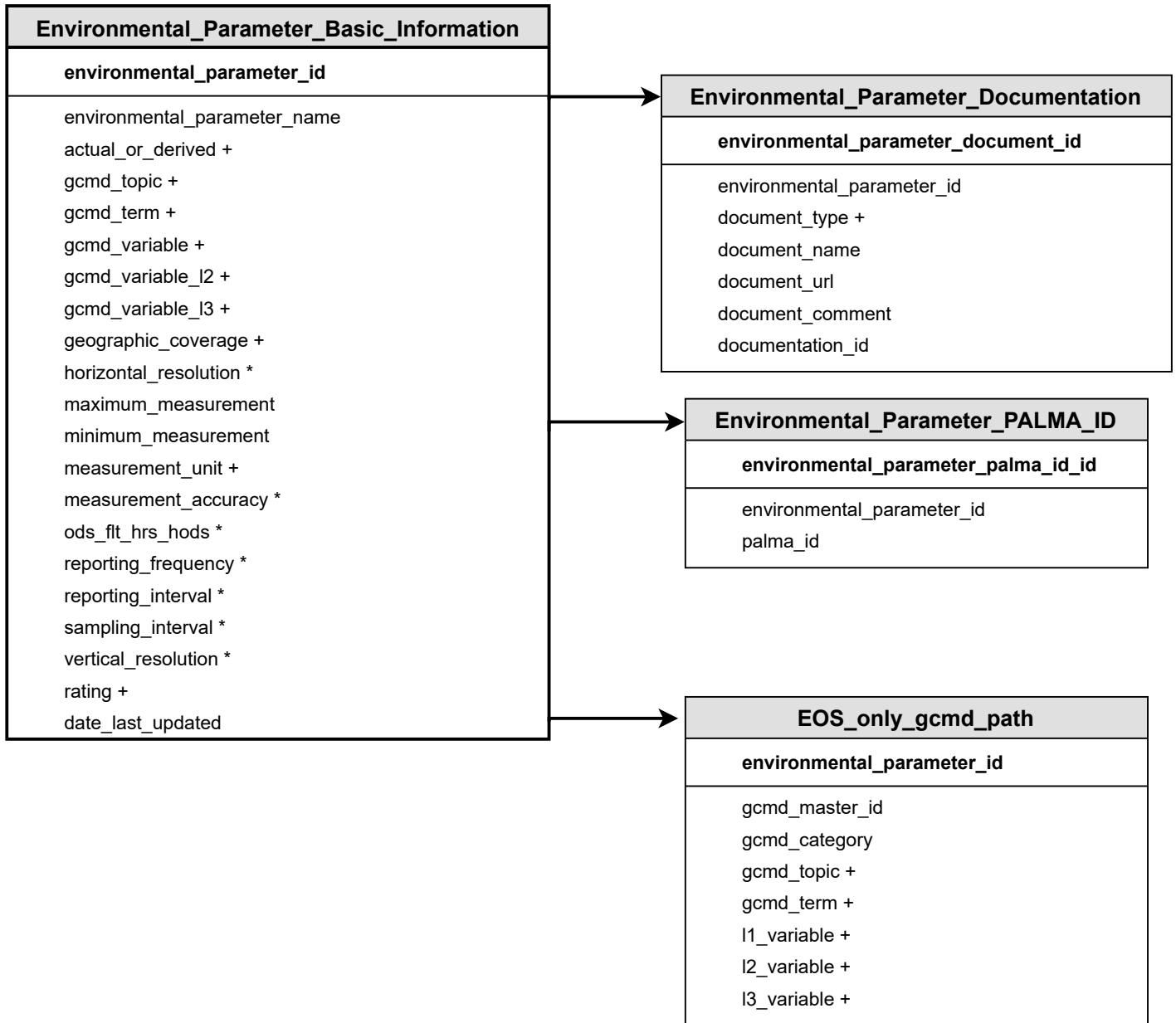
EOS - Sensing Elements and Associated Information



+ Valid values for the field are defined in a lookup table.

* True or false.

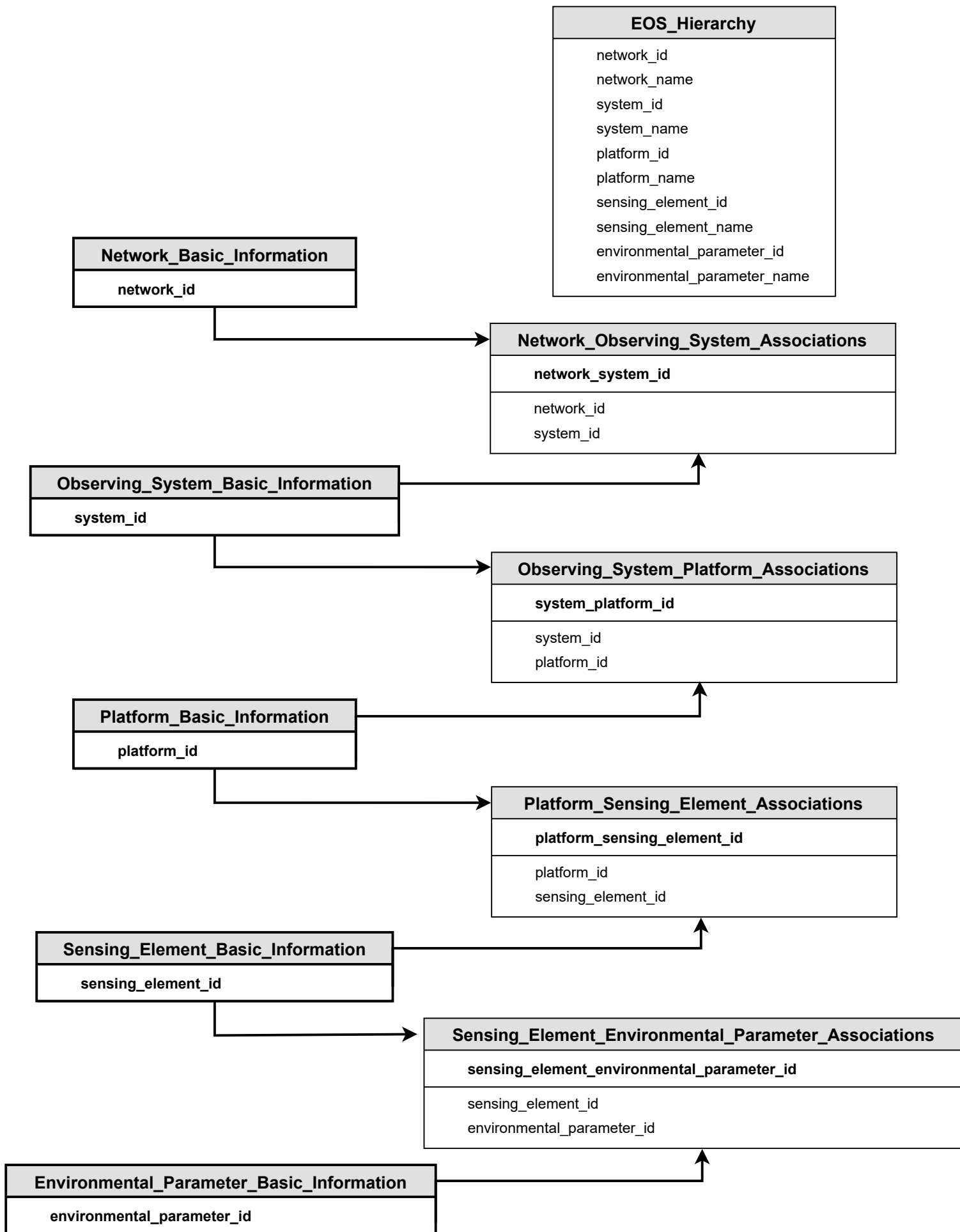
EOS - Environmental Parameters and Associated Information



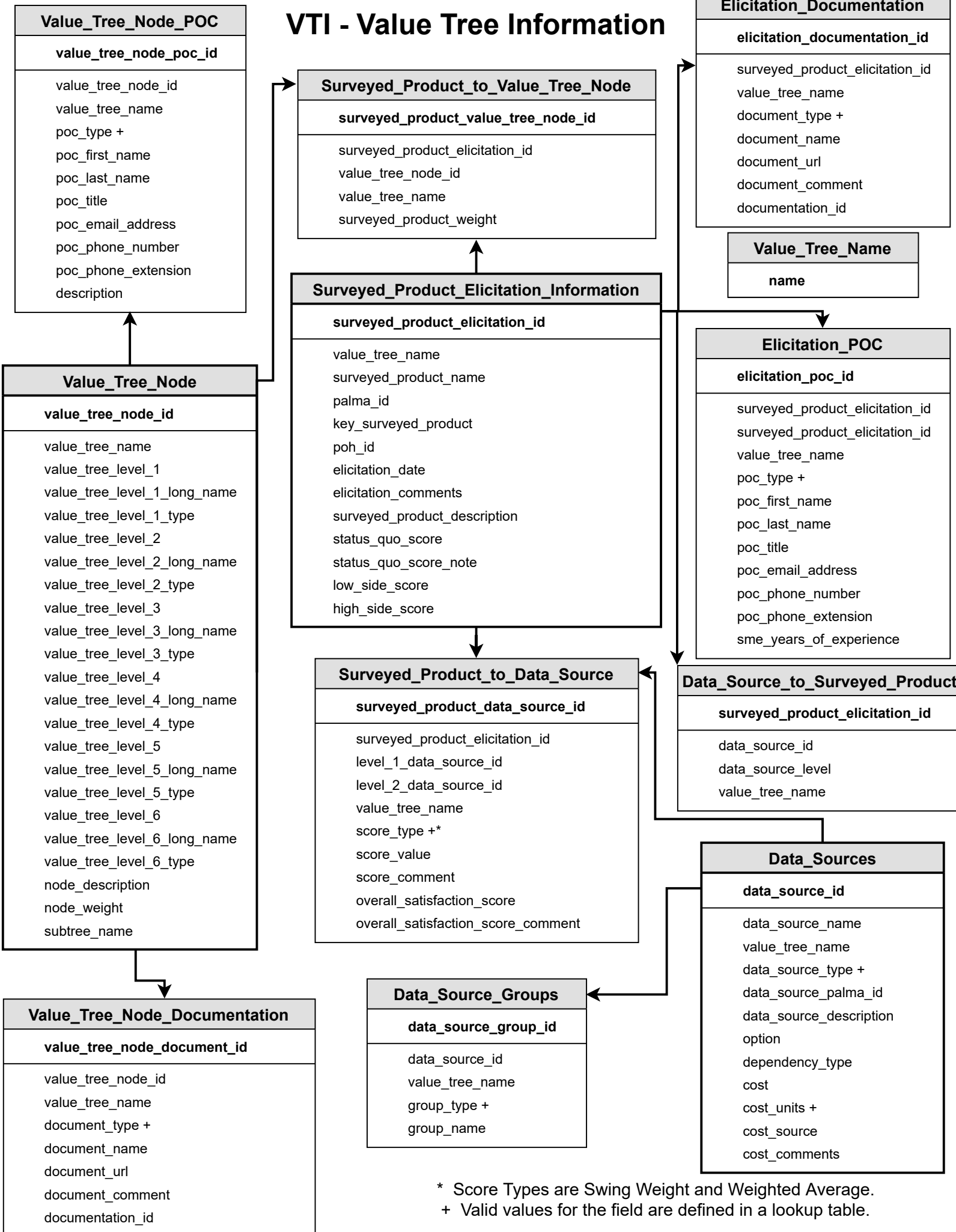
* Value and units can be captured.

+ Valid values for the field are defined in a lookup table.

EOS - Observing System Hierarchy Associations



VTI - Value Tree Information



* Score Types are Swing Weight and Weighted Average.
 + Valid values for the field are defined in a lookup table.

Cross-Data Type Information and Relationships

Shared Components Across All Three Data Types:

- Dates
- Documents - Doc ID, name, and URL
- Point of Contact (POC)
- Physical Organization Hierarchy (POH) - Both short and long name for every level
- Value Tree Hierarchy - Level type and node name for every level
- Global Change Master Directory (GCMD) Hierarchy
- Geographic Coverages and Definitions (EOR and EOS only)

GCMD_Master
gcmd_master_id
category
topic
term
I1_variable
I2_variable
I3_variable
detailed_variable

Geographic Coverage
geographic_coverage_id
geographic_coverage
definition

Person
person_id
first_name
last_name
preferred_name
title
email
primary_phone_number
primary_phone_extension
poh_id
date_active
date_inactive

Documentation
documentation_id
document_name
document_url

Physical_Organization_Hierarchy
poh_id
level_1_name
level_1_short_name
level_2_name
level_2_short_name
level_3_name
level_3_short_name
level_4_name
level_4_short_name
level_5_name
level_5_short_name
level_6_name
level_6_short_name
level_7_name
level_7_short_name
level_8_name
level_8_short_name

Cross-Data Type Relationships:

EOR to EOS:

- Can match EOR records to EOS records where the GCMD variable is the same.
- A match does not imply a direct or explicit relationship between the EOR and EOS records.
- A match means the EOR can potentially be met by the EOS or the EOS can potentially satisfy the EOR.

EOR to VTI:

- Can link EOR records to one or more VTI hierarchy nodes (including the surveyed product level).
- Link implies a direct or explicit relationship between the EOR and selected VTI nodes.

EOS to VTI:

- Can link EOS records to one or more VTI data sources by assigning PALMA IDs to EOS components.
- Link implies that the EOS record and the VTI data source(s) represent the same thing.

EOR to EOS to VTI:

- Can match EOR records to EOS records and VTI surveyed product records by POH.
- Need to keep in mind the "Organization Affiliation" type associated with the EOR and EOS records.
- Matches do not imply a direct or explicit relationship between the EOR, EOS, and VTI records.